

Sample:

Client: | Nature's Gift
Sample: | Rosewood (Aniba rosaeodora)
Batch # | BR-31354
CAS Number | 8015-77-8
Type: | Essential Oil

Conclusion:

- No synthetic intermediaries were found.
- No adulterants, diluents, or contaminants were detected via this method.



X 

Validated By:

Essential Validation Services

747 SW 2nd Ave, Gainesville, FL 32601

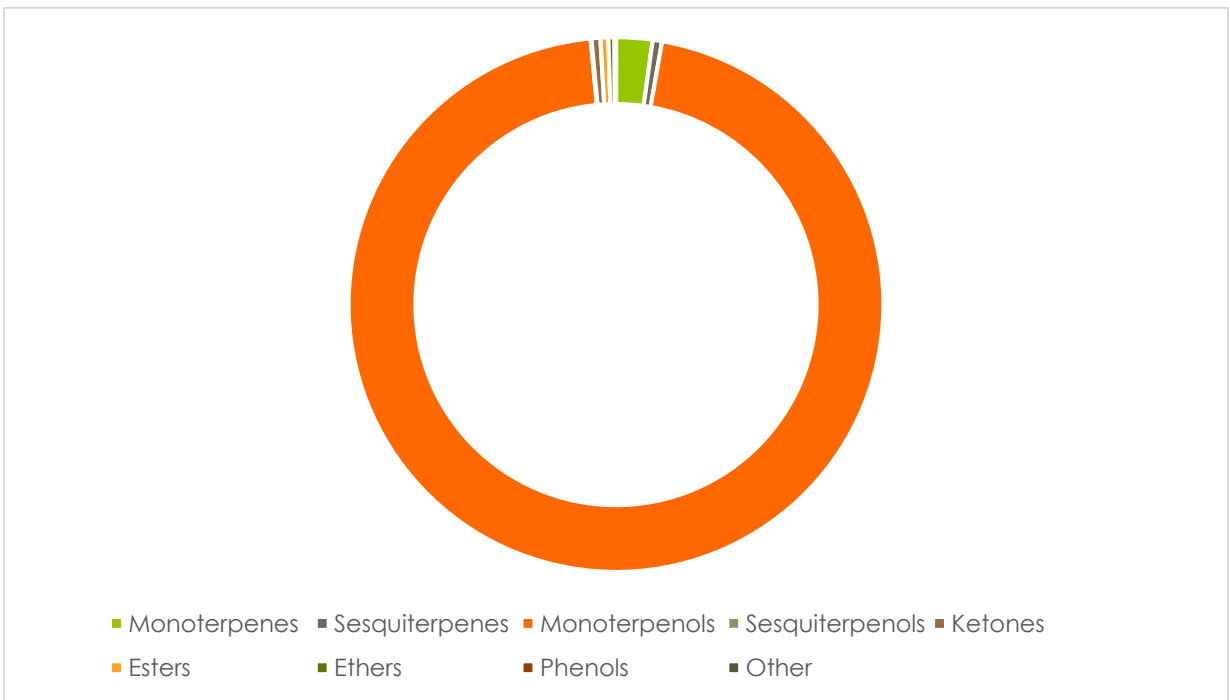
Phone: 317-361-5044 E-mail: Adam@essentialvalidationservices.com

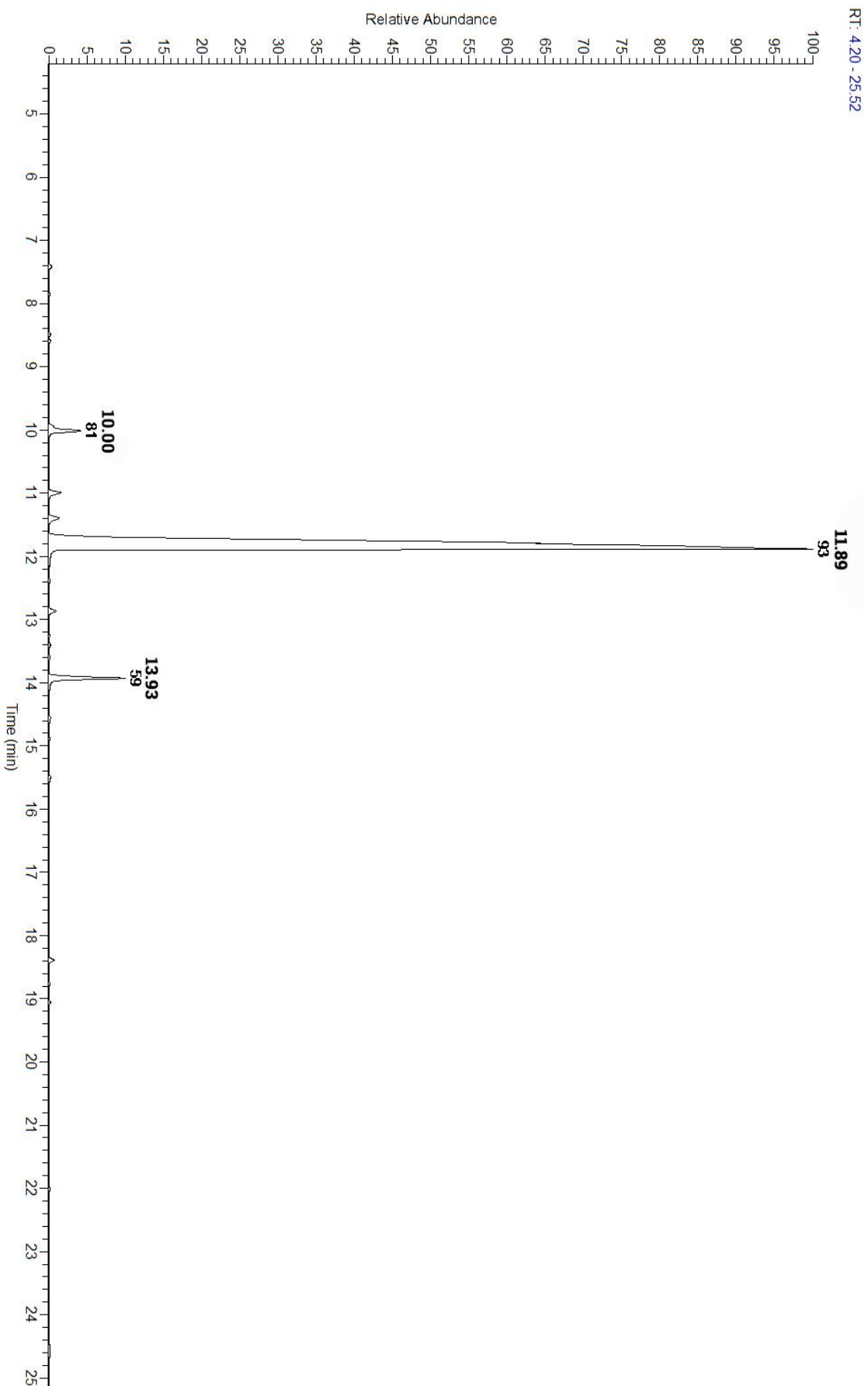
Summary of Analyses

A fresh sample of Rosewood (Aniba rosaeodora) Essential Oil (10 uL in .5to.5 mL Hexane + ETOH) was prepared and analyzed via split injection GC/EI-MS.

Main Compounds	Percentages
Linalool	89.23%
alpha-Terpineol	3.92%
Limonene	1.70%
trans-Linalool oxide (5) (0.86%
cis-Linalool oxide (5) (fur	0.58%

Monoterpenes	Sesquiterpenes	Monoterpenols	Sesquiterpenols	Ketones
2.18%	0.56%	94.96%	0.05%	0.53%
Esters	Ethers	Aldehydes	Phenols	Other
0.48%	0.36%	0.09%	0.00%	0.00%





ESSENTIAL VALIDATION SERVICES | 747 SW 2ND AVE GAINESVILLE, FLORIDA 32601 | 317-361-5044

Total Percentage	98.89%				
Peak Number	RT	Area %	Compound Name	RI	Chemical Family
1	7.23	0.02%	alpha-Thujene	935.43	Monoterpenes
2	7.43	0.14%	alpha-Pinene	940.00	Monoterpenes
3	7.84	0.04%	Camphene	951.57	Monoterpenes
4	8.48	0.07%	beta-Phellandrene	1033.57	Monoterpenes
5	8.58	0.11%	beta-Pinene	979.00	Monoterpenes
6	8.96	0.03%	Myrcene	990.57	Monoterpenes
7	9.35	0.03%	alpha-Phellandrene	1006.43	Monoterpenes
8	9.63	0.02%	alpha-Terpinene	1019.29	Monoterpenes
9	10	1.70%	Limonene	1032.00	Monoterpenes
10	10	Co-Eluting	1,8-Cineole	1033.29	Ethers
11	10	Co-Eluting	beta-Phellandrene	1033.57	Monoterpenes
12	10.67	0.02%	delta-3-Carene	1011.57	Monoterpenes
13	10.98	0.58%	cis-Linalool oxide (5) (furanoid)	1077.40	Monoterpenols
14	11.38	0.86%	trans-Linalool oxide (5) (furanoid)	1092.20	Monoterpenols
15	11.89	89.23%	Linalool	1101.14	Monoterpenols
16	12.4	0.03%	cis-Sabinene hydrate	1099.57	Monoterpenols
17	12.85	0.49%	Camphor	1153.86	Ketones
18	13.26	0.04%	Isomenthone	1164.33	Ketones
19	13.4	0.09%	Borneol	1168.71	Monoterpenols
20	13.59	0.09%	Terpinen-4-ol	1180.57	Monoterpenols
21	13.93	3.92%	alpha-Terpineol	1191.71	Monoterpenols
22	14.54	0.12%	Citronellol	1231.14	Monoterpenols
23	14.88	0.09%	Neral	1246.57	Aldehydes
24	15.13	0.04%	Geraniol	1258.29	Monoterpenols
25	15.48	0.13%	Citronellyl formate	1279.00	Esters
26	17.52	0.01%	Geranyl acetate	1384.71	Esters
27	17.69	0.01%	beta-Elemene	1388.30	Sesquiterpenes
28	17.78	0.02%	beta-Bourbonene	1388.70	Sesquiterpenes
29	18.39	0.28%	beta-Caryophyllene	1427.14	Sesquiterpenes
30	18.53	0.02%	beta-Gurjunene	1431.71	Sesquiterpenes
31	18.64	0.01%	alpha-Guaiene	1438.67	Sesquiterpenes
32	18.75	0.08%	Aristolene	1446.00	Sesquiterpenes
33	19.51	0.02%	gamma-Selinene	1465.50	Sesquiterpenes
34	19.6	0.01%	Eremophilene	1498.00	Sesquiterpenes
35	19.77	0.01%	beta-Cadinene	1501.00	Sesquiterpenes
36	20.15	0.01%	delta-Cadinene	1524.14	Sesquiterpenes
37	20.85	0.05%	Spathulenol	1578.71	Sesquiterpenols
38	21.32	0.04%	Caryophyllene oxide	1594.86	Ethers
39	22	0.09%	Viridiflorene	1494.14	Sesquiterpenes
40	24.51	0.34%	Benzyl Benzoate	1761.14	Esters