



Healing Body, Mind, and Spirit
with Pure Essential Oils Since 1995

www.naturesgift.com

Certificate of Analysis: Palma Rosa, *Cymbopogon martinii*, wildcrafted, flowering grass, steam-distilled, Nepal.

Batch No: NE-DOD915

Botanical Name: *Cymbopogon martinii* Stapf. Var. *Motia*

Reference Name: Palmarosa Essential Oil

Analysis conditions:

CPG 5890 / MS 5970 – Column: HP INNOWAX polar 60 m Å~ 0,25 mm Å~ 0,5 µm

CPG 5890 FID - Column: HP INNOWAX polar 60 m Å~ 0,25 mm Å~ 0,5 µm

Temperature program : 6 mn à 50°C –2 °C/mn@250 °C-20mn à 250°C

Carrier gas He: 23 psis/MS – 30 psis/FID

Sample injection / split: 1 µl of 5% solution in hexane.

Mass range: 30 to 350. Oil components are identified by a combination of retention times (our own database) and mass spectra library NKS 75 000 records.

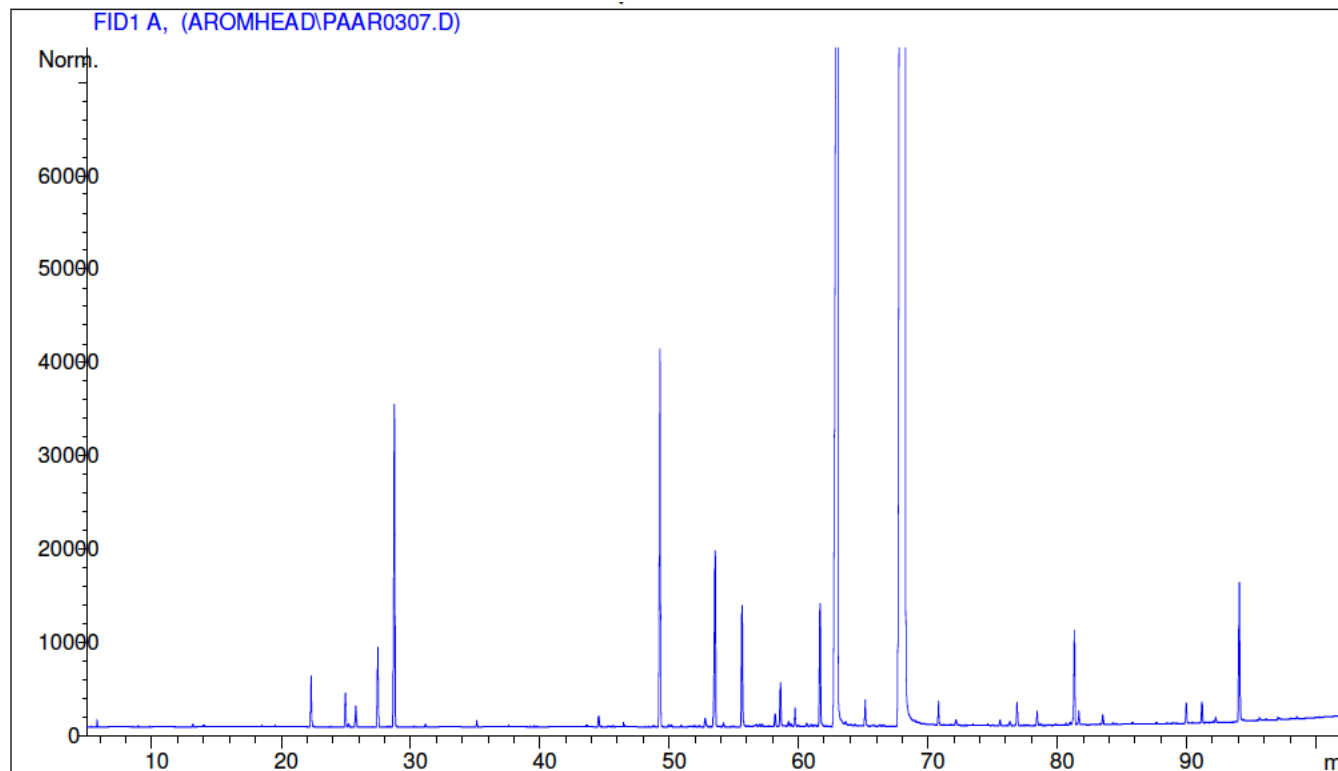
Percentages are calculated from GC/FID peaks areas without using corrections factors.

Performed By:

PYRÉNÉSSENCES - ANALYSES

Daniel DANTIN
Chimiste conseil

Analyses
Pyrénéssences



316 Old Hickory Blvd East, Madison TN 37115

tel (615) 612-4270 fax (615) 860-9171

orderdesk@naturesgift.com



*Healing Body, Mind, and Spirit
with Pure Essential Oils Since 1995*

www.naturesgift.com

Peak	Retention Time	Component	%
1	5,8	ACETONE	0,02
2	8,9	ETHANOL	0,01
3	13,2	α -PINENE	0,01
4	18,5	β -PINENE	0,01
5	22,3	β -MYRCENE	0,24
6	25,0	LIMONENE	0,17
7	25,2	ISOPENTANOL	0,02
8	25,8	1,8-CINEOLE	0,12
9	27,5	Cis- β -OCIMENE	0,39
10	28,8	Trans- β -OCIMENE	1,63
11	30,3	p-CYMENE	0,01
12	31,2	TERPINOLENE	0,01
13	35,1	6-METHYL-5-HEPTEN-2-ONE	0,03
14	44,5	MENTHONE	0,06
15	45,3	CITRONELLAL	0,01
16	46,5	ISOMENTHONE	0,02
17	49,3	LINALOOL	1,82
18	50,0	1-OCTANOL	0,01
19	50,2	LINALYL ACETATE	0,01
20	50,9	MENTHYL ACETATE	0,01
21	52,8	β -ELEMENE	0,05
22	53,5	β -CARYOPHYLLENE	1,07
23	54,2	AROMADENDRENE	0,02
24	55,6	MENTHOL	0,63
25	56,8	Trans-PINOCARVEOL	0,01
26	57,0	PULEGONE	0,01
27	57,2	E- β -FARNESENE	0,01
28	58,2	α -HUMULENE	0,07
29	58,6	NERAL	0,22
30	59,2	α -TERPINEOL	0,02
31	59,4	γ -SELINENE	0,01
32	59,7	GERANYL FORMATE	0,09
33	60,6	GERMACRENE D	0,02
34	61,7	GERANIAL	0,62
35	61,8	PIPERITONE	0,01
36	63,0	GERANYL ACETATE	13,45
37	63,6	γ -CADINENE	0,01
38	65,2	NEROL	0,13
39	68,2	GERANIOL	76,97
40	70,8	GERANYL BUTYRATE	0,11
41	72,2	GERANIC ESTER	0,04
42	75,6	ALIPHATIC ESTER	0,03
43	76,3	ISOCARYOPHYLLENE OXYDE	0,02
44	76,9	CARYOPHYLLENE OXYDE	0,12
45	78,4	NEROLIDOL	0,07
46	78,7	CAPRYLIC ACID	0,01

316 Old Hickory Blvd East, Madison TN 37115
tel (615) 612-4270 fax (615) 860-9171
orderdesk@naturesgift.com



*Healing Body, Mind, and Spirit
with Pure Essential Oils Since 1995*

www.naturesgift.com

Peak	Retention Time	Component	%
47	81,3	GERANYL CAPROATE	0,48
48	81,7	ALIPHATIC ESTER	0,07
49	83,5	ALIPHATIC ALCOHOL	0,05
50	87,6	SESQUITERPENOL	0,01
51	90,0	FARNESYL ACETATE	0,10
52	91,2	GERANYL CAPRYLATE	0,10
53	92,3	GERANIC ACID	0,02
54	94,1	FARNESOL	0,71
55	97,1	PRECOCENE II Mw=220	0,03
		TOTAL	100,00

316 Old Hickory Blvd East, Madison TN 37115
tel (615) 612-4270 fax (615) 860-9171
orderdesk@naturesgift.com