



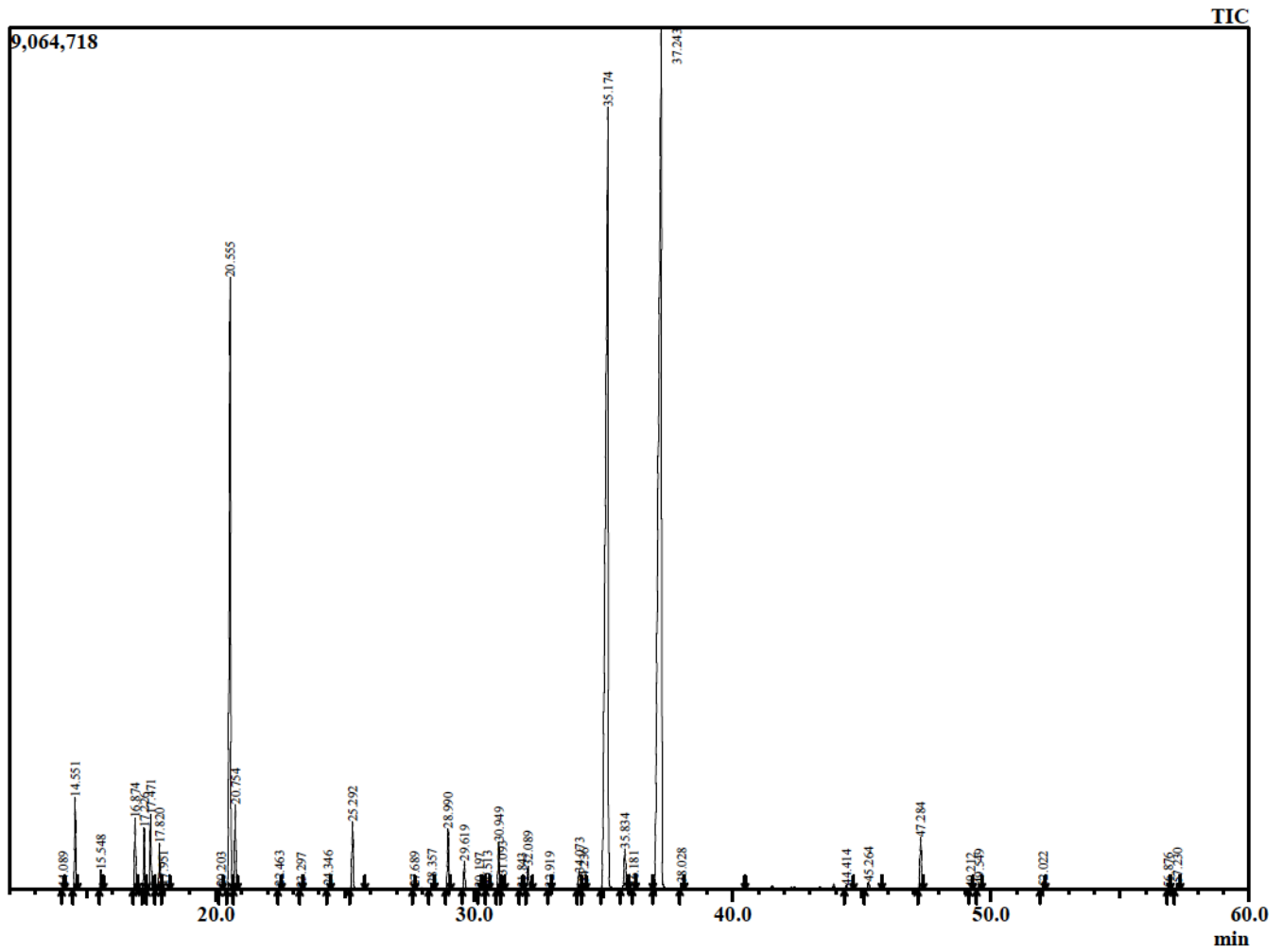
Healing Body, Mind, and Spirit
with Pure Essential Oils Since 1995

www.naturesgift.com

Certificate of Analysis: Litsea (May Chang) Essential Oil, *Litsea cubeba*, China.

Batch No: CH-140560

Analyzed: 7/8/2015



(continued)

316 Old Hickory Blvd East, Madison TN 37115
tel (615) 612-4270 fax (615) 860-9171
orderdesk@naturesgift.com



*Healing Body, Mind, and Spirit
with Pure Essential Oils Since 1995*

www.naturesgift.com

Peak Report TIC

R.Time	Name	Area%
14.089	Thujene <alpha->	0.04
14.551	Pinene <alpha>	1.48
15.548	Camphene	0.34
16.874	Sabinene	1.24
17.226	Pinene <beta->	1.09
17.471	Hept-5-en-2-one <6-methyl->	1.31
17.820	Myrcene	0.79
17.951	2,3-Dehydro-1,8-cineole	0.11
20.203	Cymene <para->	0.05
20.555	Limonene	13.16
20.754	1,8-Cineole	1.53
22.463	Terpinene <gamma>	0.07
23.297	4-Thujanol <trans>	0.03
24.346	Terpinolene	0.08
25.292	Linalool	1.41
27.689	Limonene oxide <cis->	0.05
28.357	epiphocitral A	0.12
28.990	Citronellal	1.26
29.619	Chrysanthenol<cis>	0.67
30.197	Isoborneol	0.03
30.513	Borneol	0.07
30.949	Isocitral <trans>	1.00
31.093	Terpinen-4-ol	0.34
31.843	Methyl salicylate	0.04
32.089	Terpineol <alpha->	0.55
32.919	Carveol <cis>	0.04
34.073	Nerol	0.46
34.236	Citronellol	0.20
35.174	Neral	30.26
35.834	Geraniol	1.01
36.181	Piperitone	0.08
37.243	Geranial	38.99
38.028	5-Hepten-2-one, 6-methyl-	0.13
44.414	Copaene <alpha>	0.12
45.264	Elemene <beta>	0.18
47.284	Caryophyllene <trans>	1.20
49.212	Farnesene <(E)-, beta->	0.03
49.549	Humulene <alpha>	0.12
52.022	Germacrene D	0.08
56.876	Spathulenol	0.04
57.230	Caryophyllene oxide	0.18
		100.00

316 Old Hickory Blvd East, Madison TN 37115
tel (615) 612-4270 fax (615) 860-9171
orderdesk@naturesgift.com