

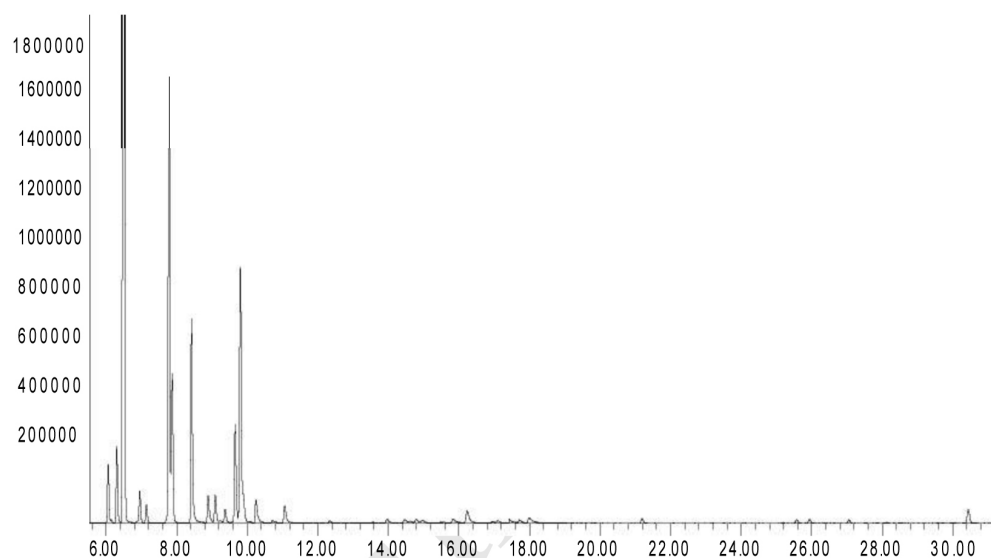


Healing Body, Mind, and Spirit
with Pure Essential Oils Since 1995

www.naturesgift.com

Certificate of Analysis: *Boswellia carterii* Essential Oil

Retention time (mins)	Chemical Identified	Mean % Peak Area
6.50	α -Pinene ^{1,2}	57.17
6.95	Camphene ²	0.78
7.78	Sabinene ²	11.16
7.87	β -Pinene ^{1,2}	3.47
8.42	β -Myrcene ²	5.03
8.89	α -Phellandrene ^{1,2}	0.88
9.10	3-Carene ²	0.86
9.37	a-Terpinene ²	0.45
9.66	p-Cymene	2.71
9.80	Limonene ^{1,2}	7.93
10.25	trans- β -Ocimene ^{1,2}	0.89
11.06	t-Terpinene ²	0.65
13.97	α -Campholenal ²	0.19
16.24	Terpene-4-ol ²	0.67
17.78	Verbenone ^{1,2}	0.11
17.94	Octyl acetate ²	0.35
21.20	Bornyl acetate ²	0.16
34.26	Viridiflorene ²	0.17
	Total identified	93.62



316 Old Hickory Blvd East, Madison TN 37115
tel (615) 612-4270 fax (615) 860-9171
orderdesk@naturesgift.com