

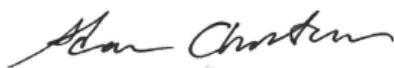
Sample:

Client: | Nature's Gift
Sample: | Corn Mint (Mentha arvensis)
Batch # | NE-26850
CAS Number | 68917-18-0
Type: | Essential Oil

Conclusion:

- No adulterants, diluents, or contaminants were detected via this method.
- Notable missing components: Myrcene, Menthofuran.
- No synthetic intermediaries were found.

X



Validated By:



Essential Validation Services

747 SW 2nd Ave, Gainesville, FL 32601

Phone: 317-361-5044 E-mail: Adam@essentialvalidationservices.com

Summary of Analyses

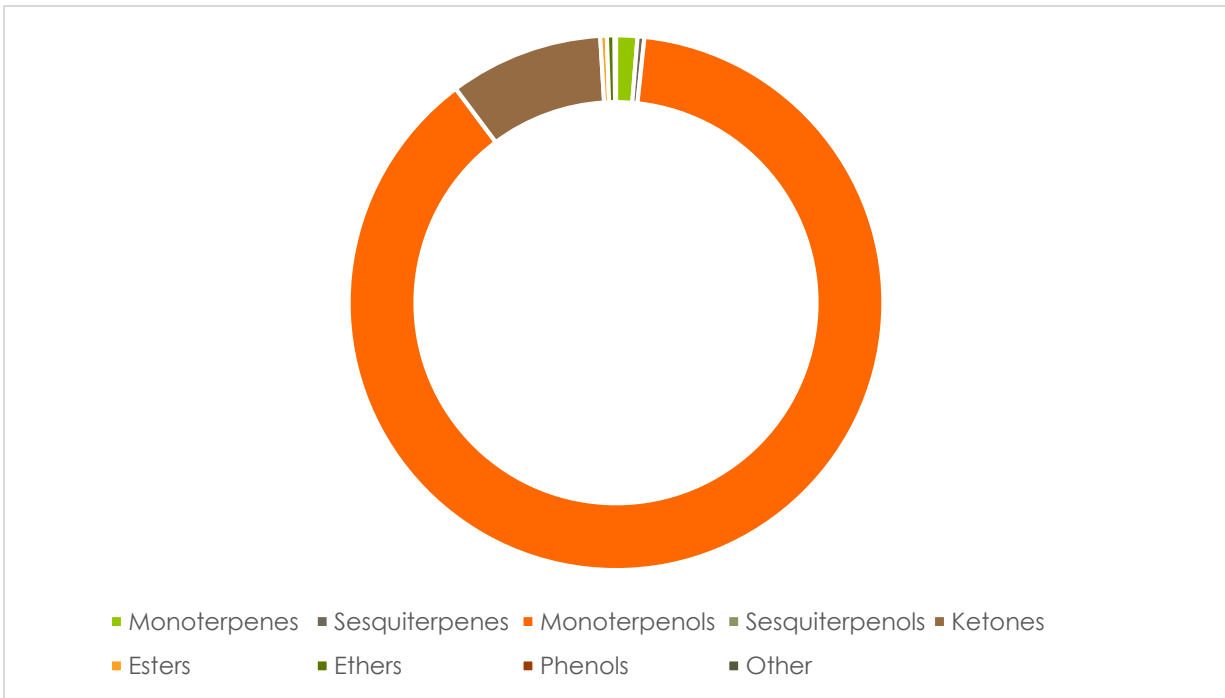
A fresh sample of Corn Mint (Mentha arvensis) Essential Oil (10 uL in .5to.5 mL Hexane + ETOH) was prepared and analyzed via split injection GC/EI-MS.

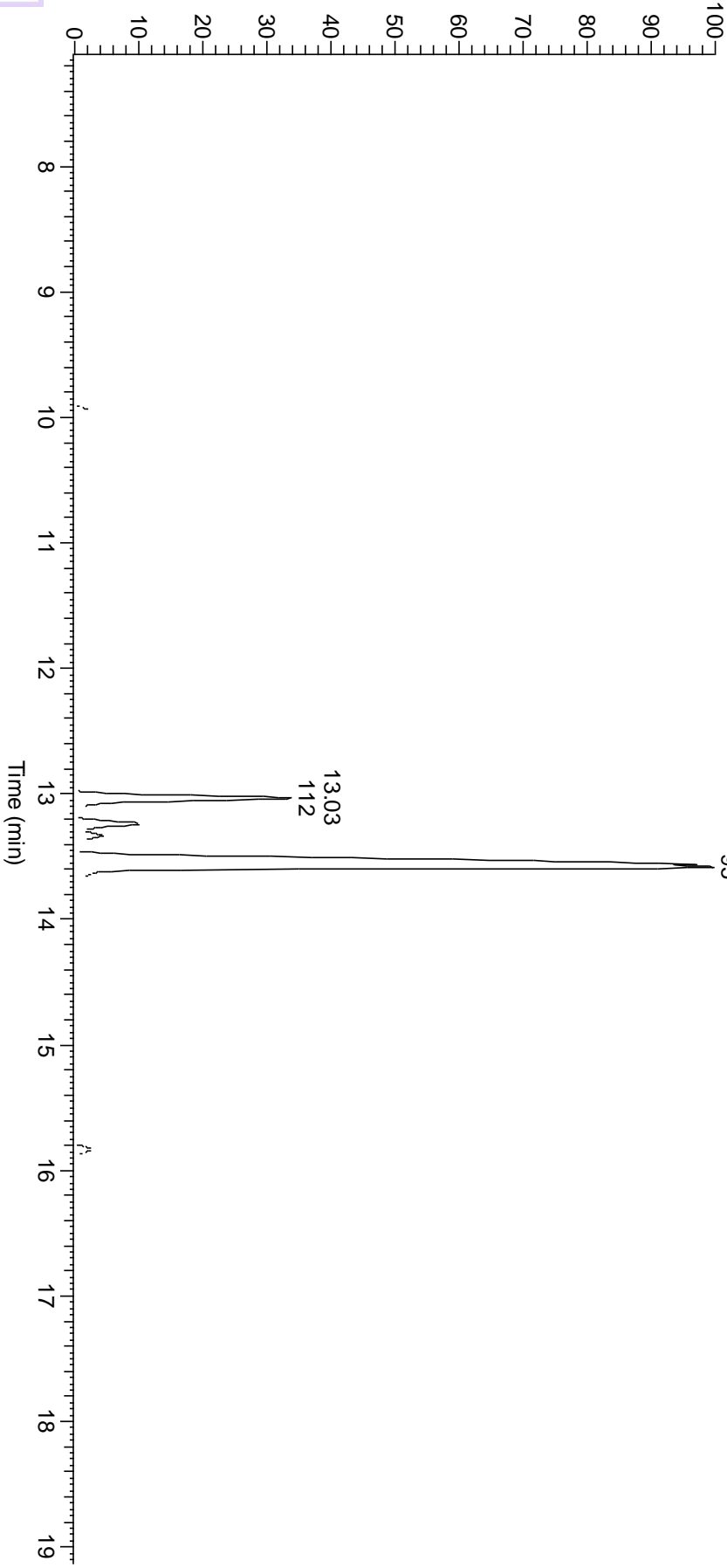


ESSENTIAL VALIDATION SERVICES | 747 SW 2ND AVE GAINESVILLE, FLORIDA 32601 | 317-361-5044

Main Compounds	Percentages
Menthol	86.80%
Menthone	7.32%
Isomenthone	1.63%
Neomenthol	0.73%

Monoterpenes	Sesquiterpenes	Monoterpenols	Sesquiterpenols	Ketones
1.29%	0.41%	87.93%	0.00%	9.27%
Esters	Ethers	Aldehydes	Phenols	Other
0.39%	0.47%	0.00%	0.00%	0.07%





ESSENTIAL VALIDATION SERVICES | 747 SW 2ND AVE GAINESVILLE, FLORIDA 32601 | 317-361-5044

Peak Number	RT	Area %	Compound Name	RI	Chemical Family
Total Percentage 99.41%					
1	7.42	0.08%	alpha-Pinene	940.00	Monoterpenes
2	8.5	0.04%	Sabinene	975.71	Monoterpenes
3	8.58	0.10%	beta-Pinene	979.00	Monoterpenes
4	8.77	0.04%	3-Octanol	994.67	Monoterpenols
5	9.92	0.35%	Limonene	1032.00	Monoterpenes
6	9.92	0.03%	1,8-Cineole	1033.29	Ethers
7	9.92	0.03%	beta-Phellandrene	1033.57	Monoterpenes
8	10.1	0.47%	para-Cymene	1025.71	Monoterpenes
9	10.99	0.04%	trans-Sabinene hydrate	1072.14	Monoterpenols
10	11.72	0.04%	Linalool	1101.14	Monoterpenols
11	11.86	0.04%	1-Octenyl-3 acetate	1113.75	Esters
12	12.85	0.19%	Isopulegol	1155.00	Monoterpenols
13	13.03	7.32%	Menthone	1159.43	Ketones
14	13.24	1.63%	Isomenthone	1164.33	Ketones
15	13.33	0.73%	Neomenthol	1165.00	Monoterpenols
16	13.58	86.80%	Menthol	1177.40	Monoterpenols
17	13.8	0.21%	p-Cymen-8-ol	1186.43	Monoterpenes
18	13.95	0.10%	alpha-Terpineol	1191.71	Monoterpenols
19	14.86	0.18%	Pulegone	1244.43	Ketones
20	15.21	0.14%	Piperitone	1259.60	Ketones
21	15.46	0.04%	cis-Linoleic acid	1306.50	Other
22	15.82	0.36%	Menthyl acetate	1297.00	Esters
23	16.15	0.04%	trans-Linoleic acid	1305.50	Other
24	16.65	0.04%	gamma-Elemene	1491.25	Sesquiterpenes
25	17.53	0.05%	alpha-Bourbonene	1375.20	Sesquiterpenes
26	17.69	0.07%	beta-Bourbonene	1388.70	Sesquiterpenes
27	18.37	0.08%	beta-Caryophyllene	1427.14	Sesquiterpenes
28	18.56	0.04%	beta-Gurjunene	1431.71	Sesquiterpenes
29	18.83	0.03%	alpha-Himachalene	1448.40	Sesquiterpenes
30	18.96	0.04%	alpha-Caryophyllene	1454.00	Sesquiterpenes
31	19.04	0.04%	(E)-beta-Farnesene	1456.29	Sesquiterpenes
32	19.5	0.03%	Germacrene D	1484.71	Sesquiterpenes
33	19.78	0.00%	gamma-Elemene	1491.25	Sesquiterpenes
34	19.84	0.00%	delta-Selinene	1494.00	Sesquiterpenes
35	20.13	0.00%	delta-Cadinene	1524.14	Sesquiterpenes
36	21.31	0.02%	Caryophyllene oxide	1594.86	Ethers