

Sample:

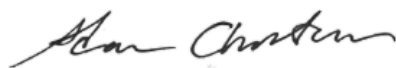
Client: | Nature's Gift
Sample: | Ylang Ylang Complete (Cananga odorata)
Batch # | MA-58784
CAS Number | 8006-81-3
Type: | Essential Oil

Conclusion:

- No adulterants, diluents, or contaminants were detected via this method.
- This oil meets the expected profile for genuine essential oil of Ylang Ylang (Cananga odorata).



X



Validated By:

Essential Validation Services

747 SW 2nd Ave, Gainesville, FL 32601

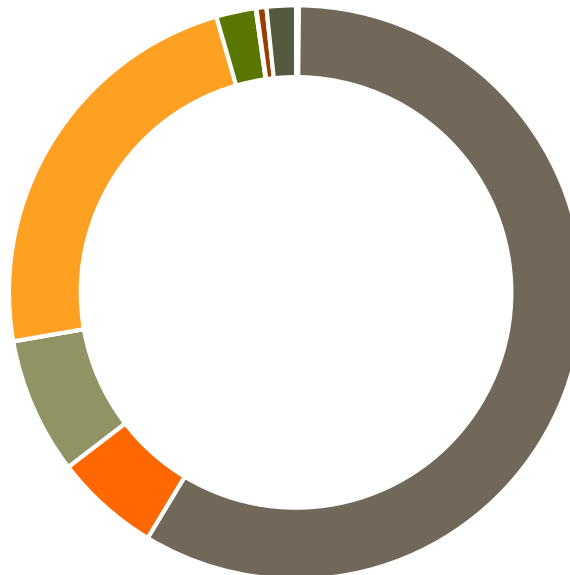
Phone: 317-361-5044 E-mail: Adam@essentialvalidationservices.com

Summary of Analyses

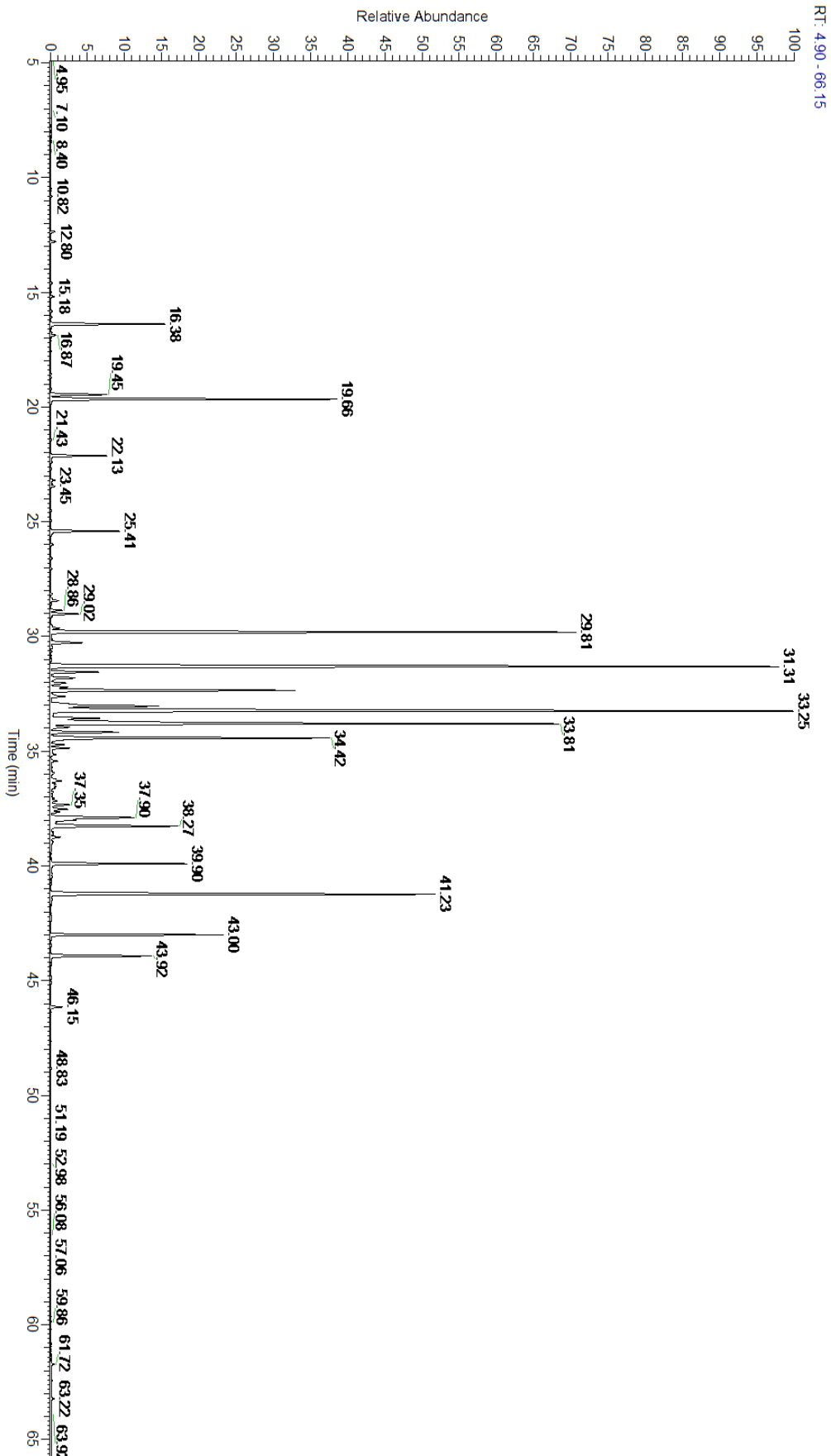
A fresh sample of Ylang Ylang (Cananga odorata) Essential Oil (10 uL in .5to.5 mL Hexane + ETOH) was prepared and analyzed via split injection GC/EI-MS.

Main Compounds	Percentages
Germacrene D	15.57%
beta-Caryophyllene	15.53%
(E,E)-alpha-Farnesene	10.41%
Geranyl acetate	9.24%
Benzyl benzoate	7.21%
delta-Cadinene	4.81%
Linalool	4.74%
alpha-Humulene	4.33%
(E,E)-Farnesyl acetate	2.47%
alpha-Cadinol	2.37%
gamma-Muurolene	2.36%
(Z,E)-Farnesol	2.16%
T-Cadinol	1.97%

Monoterpenes	Sesquiterpenes	Monoterpenols	Sesquiterpenols	Ketones
0.16%	58.49%	5.94%	7.68%	0.00%
Esters	Ethers	Aldehydes	Phenols	Other
23.25%	2.23%	0.04%	0.56%	1.65%



- Monoterpenes ■ Sesquiterpenes ■ Monoterpenols
- Sesquiterpenols ■ Ketones ■ Esters
- Ethers ■ Phenols ■ Other



Total Percentage		98.35%			
Peak Number	RT	Area %	Compound Name	RI	Chemical Family
1	10.82	0.01%	3-Methyl-3-buten-1-yl acetate	888.00	Aliphatic Ester
2	12.36	0.06%	Prenyl acetate	914.00	Aliphatic Ester
3	12.80	0.08%	alpha-Pinene	936.10	Monoterpene
4	14.59	0.02%	beta-Pinene	974.00	Monoterpene
5	15.18	0.05%	Myrcene	989.20	Monoterpene
6	15.83	0.02%	(Z)-3-Hexenyl acetate	1004.00	Aliphatic Ester
7	16.09	0.01%	Hexyl acetate	1009.00	Aliphatic Ester
8	16.38	1.90%	p-Cresyl methyl ether	1015.00	Monoterpene Ether
9	16.77	0.01%	Limonene	1029.50	Monoterpene
10	16.87	0.08%	1,8-Cineole	1031.80	Monoterpene Ether
11	19.45	0.96%	Methyl benzoate	1096.10	Phenolic Ester
12	19.66	4.74%	Linalool	1099.00	Monoterpenol
13	22.13	0.90%	Benzyl acetate	1161.25	Phenolic Ester
14	22.28	0.02%	Ethyl benzoate	1169.00	Phenolic Ester
15	23.19	0.07%	alpha-Terpineol	1191.71	Monoterpenol
16	23.45	0.07%	Methyl chavicol	1193.40	Phenylpropanoid
17	25.41	1.13%	Geraniol	1255.29	Monoterpenol
18	25.99	0.04%	Geranial	1272.00	Monoterpene Aldehyde
19	26.59	0.03%	(E)-Anethole	1283.00	Phenylpropanoid
20	28.44	0.13%	delta-Elemene	1335.83	Sesquiterpene
21	28.86	0.17%	alpha-Cubebene	1355.71	Sesquiterpene
22	29.02	0.46%	Eugenol	1365.89	Phenylpropanoid
23	29.64	0.16%	alpha-Copaene	1379.00	Sesquiterpene
24	29.81	9.24%	Geranyl acetate	1379.20	Monoterpene Ester
25	30.13	0.02%	beta-Bourbonene	1388.70	Sesquiterpene
26	30.28	0.61%	beta-Elemene	1389.20	Sesquiterpene
27	31.31	15.53%	beta-Caryophyllene	1427.14	Sesquiterpene
28	31.55	0.83%	trans-alpha-Bergamotene	1435.00	Sesquiterpene
29	31.80	0.45%	(E)-Cinnamyl acetate	1443.50	Phenylpropanoid Ester
30	32.04	0.26%	beta-Copaene	1445.00	Sesquiterpene
31	32.20	0.28%	(Z)-beta-Farnesene	1453.40	Sesquiterpene
32	32.35	4.33%	alpha-Humulene	1461.43	Sesquiterpene
33	32.62	0.27%	allo-Aromadendrene	1471.00	Sesquiterpene
34	33.03	2.36%	gamma-Murolene	1478.86	Sesquiterpene
35	33.25	15.57%	Germacrene D	1484.71	Sesquiterpene
36	33.57	0.83%	alpha-Murolene	1500.25	Sesquiterpene
37	33.81	10.41%	(E,E)-alpha-Farnesene	1508.14	Sesquiterpene
38	33.95	0.33%	delta-Guaiene	1511.50	Sesquiterpene
39	34.18	1.11%	gamma-Cadinene	1515.29	Sesquiterpene
40	34.42	4.81%	delta-Cadinene	1524.14	Sesquiterpene
41	34.71	0.19%	trans-alpha-Bisabolene	1537.33	Sesquiterpene
42	34.87	0.29%	alpha-Cadinene	1537.86	Sesquiterpene
43	35.15	0.08%	Elemol	1538.00	Sesquiterpenol

