



Sample:

Client: | Nature's Gift
Sample: | Ylang Ylang extra (Cananga odorata)
Batch # | CO-21296
CAS Number | 8006-81-3
Type: | Essential Oil

Conclusion:

- No adulterants, diluents, or contaminants were detected via this method.



X *Adam Christen*

Validated By:

Essential Validation Services

747 SW 2nd Ave, Gainesville, FL 32601

Phone: 317-361-5044 E-mail: Adam@essentialvalidationservices.com

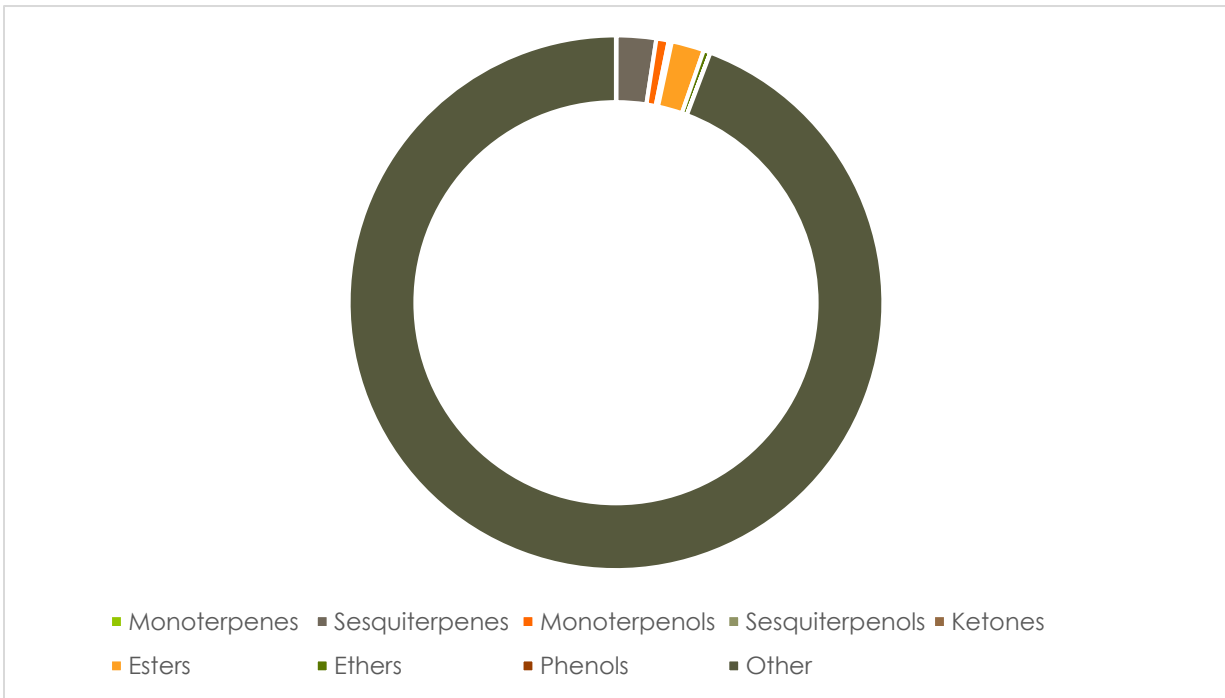
Summary of Analyses

A fresh sample of Ylang Ylang extra (Cananga odorata) Essential Oil (10 uL in .5to.5 mL Hexane + ETOH) was prepared and analyzed via split injection GC/EI-MS.

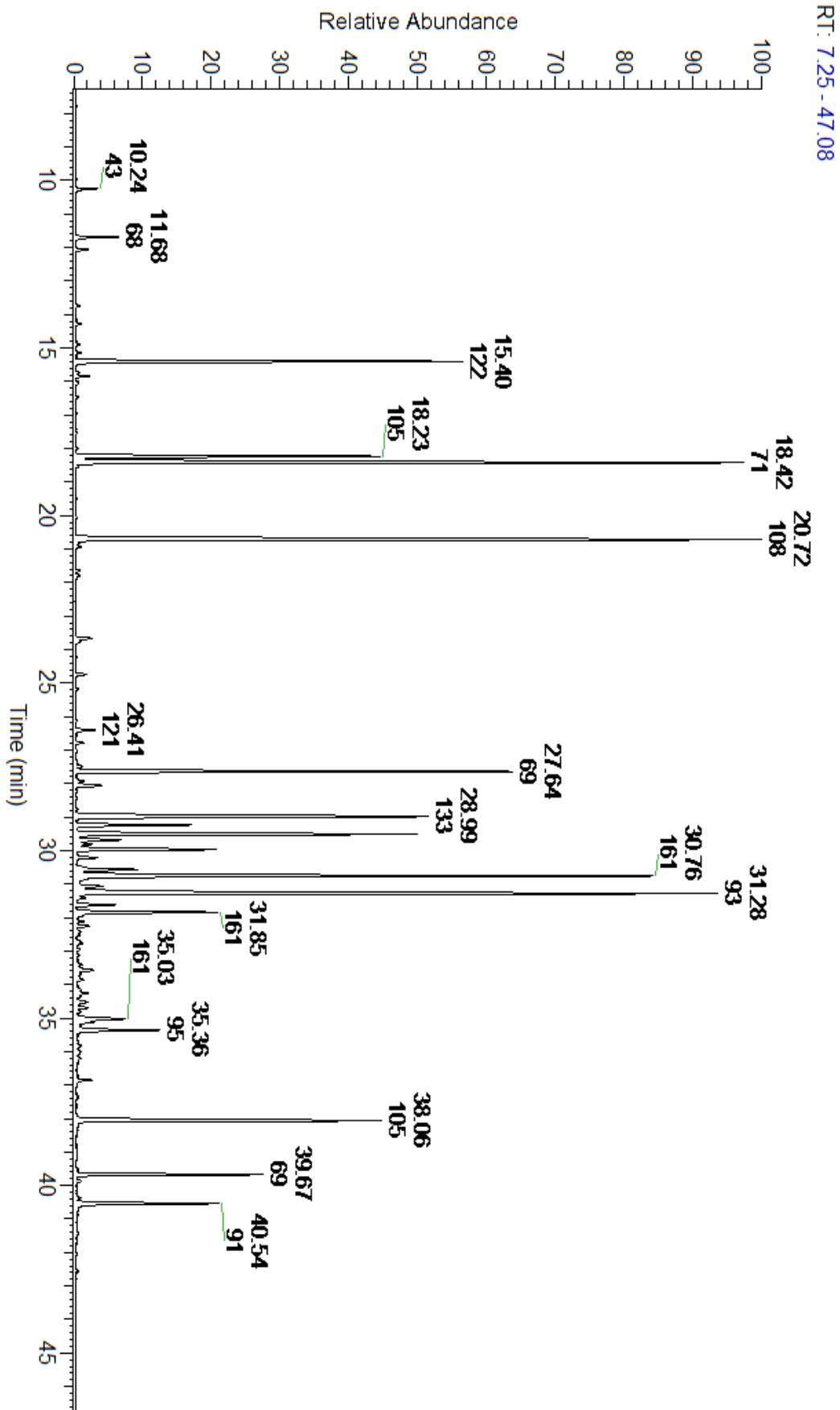


Main Compounds	Percentages
Benzyl acetate	11.90%
Linalool	10.82%
(E,E)-alpha-Farnesene	10.17%
Germacrene D	9.27%
beta-Caryophyllene	7.11%
Geranyl acetate	6.10%
para-Methyl anisole	5.68%
(E)-Cinnamyl acetate	5.27%
Methyl benzoate	4.75%
alpha-Humulene	2.21%
delta-Cadinene	2.10%
alpha-Cadinol	1.36%
gamma-Murolene	1.02%

Monoterpenes	Sesquiterpenes	Monoterpenols	Sesquiterpenols	Ketones
0.47%	35.64%	11.15%	2.79%	0.01%
Esters	Ethers	Aldehydes	Phenols	Other
29.45%	6.21%	0.04%	0.28%	13.96%



ESSENTIAL VALIDATION SERVICES | 747 SW 2ND AVE GAINESVILLE, FLORIDA 32601 | 317-361-5044



Total Percentage		86.04%			
Peak Number	RT	Area %	Compound Name	RI	Chemical Family
1	9.97	0.01%	Isoamyl acetate	869.00	Aliphatic Ester
2	10.24	0.28%	3-Methyl-3-buten-1-yl acetate	910.00	Aliphatic Ester
3	11.68	0.59%	Prenyl acetate	914.00	Aliphatic Ester
4	12.07	0.18%	alpha-Pinene	936.10	Monoterpene
5	13.73	0.05%	beta-Pinene	974.00	Monoterpene
6	14.16	0.01%	6-Methyl-5-hepten-2-one	982.00	Aliphatic Ketone
7	14.28	0.07%	Myrcene	989.20	Monoterpene
8	14.89	0.06%	(Z)-3-Hexenyl acetate	1004.00	Aliphatic Ester
9	15.13	0.07%	Hexyl acetate	1009.00	Aliphatic Ester
10	15.27	0.01%	alpha-Terpinene	1014.00	Monoterpene
11	15.40	5.68%	para-Methyl anisole	1015.00	Monoterpene Ether
12	15.74	0.05%	Limonene	1029.50	Monoterpene
13	15.84	0.18%	1,8-Cineole	1031.80	Monoterpene Ether
14	15.99	0.03%	Benzyl alcohol	1032.00	Simple Phenolic
15	16.06	0.04%	(Z)-beta-Ocimene	1037.80	Monoterpene
16	16.46	0.04%	(E)-beta-Ocimene	1047.70	Monoterpene
17	17.43	0.01%	p-Cresol	1071.00	Phenol
18	18.00	0.03%	Terpinolene	1092.10	Monoterpene
19	18.23	4.75%	Methyl benzoate	1096.10	Phenolic Ester
20	18.42	10.82%	Linalool	1099.00	Monoterpenol
21	18.54	0.03%	Nonanal	1104.00	Aliphatic Aldehyde
22	20.72	11.90%	Benzyl acetate	1161.25	Phenolic Ester
23	20.93	0.10%	Ethyl benzoate	1169.00	Phenolic Ester
24	21.65	0.06%	alpha-Terpineol	1191.71	Monoterpenol
25	21.78	0.07%	Methyl salicylate	1192.29	Phenolic Ester
26	21.88	0.02%	Methyl chavicol	1193.40	Phenylpropanoid
27	23.67	0.27%	Geraniol	1255.29	Monoterpenol
28	23.77	0.08%	2-Phenylethyl acetate	1257.00	Phenolic Ester
29	24.23	0.01%	Geranial	1272.00	Monoterpene Aldehyde
30	24.74	0.18%	(E)-Anethole	1283.00	Phenylpropanoid
31	25.18	0.04%	1-Nitro-2-phenyl ethane	1284.50	Phenol
32	26.41	0.31%	delta-Elemene	1335.83	Sesquiterpene
33	26.57	0.03%	Benzyl Butanoate		
34	26.79	0.11%	alpha-Cubebene	1355.71	Sesquiterpene
35	27.50	0.12%	alpha-Ylangene	1371.33	Sesquiterpene
36	27.64	6.10%	Geranyl acetate	1378.50	Monoterpene Ester
37	27.93	0.13%	beta-Bourbonene	1388.70	Sesquiterpene
38	28.07	0.49%	beta-Elemene	1389.20	Sesquiterpene
39	28.21	0.01%	beta-Cubebene	1390.50	Sesquiterpene
40	28.99	7.11%	beta-Caryophyllene	1427.14	Sesquiterpene
41	29.51	5.27%	(E)-Cinnamyl acetate	1443.50	Phenylpropanoid Ester
42	29.69	0.71%	beta-Copaene	1445.00	Sesquiterpene



ESSENTIAL VALIDATION SERVICES | 747 SW 2ND AVE GAINESVILLE, FLORIDA 32601 | 317-361-5044

43	29.81	0.25%	(E)-beta-Farnesene	1456.29	Sesquiterpene
44	29.97	2.21%	alpha-Humulene	1461.43	Sesquiterpene
45	30.57	1.02%	gamma-Muurolene	1478.86	Sesquiterpene
46	30.76	9.27%	Germacrene D	1484.71	Sesquiterpene
47	30.98	0.03%	Bicyclogermacrene	1490.71	Sesquiterpene
48	31.07	0.43%	alpha-Muurolene	1500.25	Sesquiterpene
49	31.28	10.17%	(E,E)-alpha-Farnesene	1508.14	Sesquiterpene
50	31.42	0.13%	delta-Guaiene	1511.50	Sesquiterpene
51	31.62	0.58%	gamma-Cadinene	1515.29	Sesquiterpene
52	31.85	2.10%	delta-Cadinene	1524.14	Sesquiterpene
53	31.94	0.07%	Zonarene	1527.00	Sesquiterpene
54	32.11	0.13%	trans-Calamenene	1529.50	Sesquiterpene
55	32.26	0.20%	alpha-Cadinene	1537.86	Sesquiterpene
56	32.51	0.06%	alpha-Cadinene	1537.86	Sesquiterpene
57	32.71	0.05%	(Z)-Nerolidol	1542.25	Sesquiterpenol
58	32.77	0.09%	(E)-Nerolidol	1567.00	Sesquiterpenol
59	33.58	0.35%	Caryophyllene oxide	1594.86	Sesquiterpene Ether
60	34.27	0.17%	Isoeugenyl acetate	1610.00	Phenylpropanoid Ester
61	34.81	0.04%	1,10-diepi-Cubenol	1612.29	Sesquiterpenol
62	35.03	1.01%	1-epi-Cubenol	1628.00	Sesquiterpenol
63	35.13	0.24%	T-Cadinol	1640.43	Sesquiterpenol
64	35.36	1.36%	alpha-Cadinol	1655.00	Sesquiterpenol

- This report is the digitally signed and will only be considered valid if the signature is intact.
- This report may not be published without the consent of Essential Validation Services.
- Chromatograph image may not show full run time