



316 Old Hickory Blvd East, Madison, TN 37115  
 tel (615)612-4270 fax (615)860-9171  
 sold@naturesgift.com  
*Balancing Body, Mind and Spirit with Pure Essential Oils*  
 Since 1995  
 www.naturesgift.com

## Ylang Ylang Complete

*Cananga odorata*

Madagascar

Batch #MA-58983

### Monoterpenes 0.24%

α pinene	0.14
myrcene	0.06
β pinene	0.04

### Monoterpenols 7.03%

linalool	5.87
geraniol	1.04
α terpineol	0.1
nerol	0.02

### Esters 20.3%

geranyl acetate	6.72
benzyl benzoate	6.34
(E,E) farnesyl acetate	1.95
benzyl salicylate	1.56
methyl benzoate	1.28
benzyl acetate	1.16
(E) cinnamyl acetate	0.84
geranyl benzoate	0.13
prenyl acetate	0.1
(Z)-3-hexenyl benzoate	0.04
(Z)-3-hexenyl acetate	0.04
3-methyl-3-buten-1-yl acetate	0.03
hexyl acetate	0.03
ethyl benzoate	0.03
methyl salicylate	0.03
neryl acetate	0.02

### Sesquiterpenols 7.63%

α cadinol	2.26
(E,Z)-farnesol	1.83
τ muurolol	1.72
α muurolol	0.44
junenol	0.39
1-epi-cubenol	0.29
1,10-di-epi-cubenol	0.14
viridiflorol	0.11
(E) nerolidol	0.1
elemol	0.08
maaliol	0.08
globulol	0.07
guaiol	0.07
(E,E)-farnesol	0.03
palustrol	0.02

### Aldehydes 0.04%

geranial	0.04
----------	------

### Ethers 2.75%

para-cresyl methyl ether	2.41
1,8 cineole	0.16
caryophyllene oxide	0.18

### Sesquiterpenes 57.34%

(Z,E) α farnesene	2.58
(E,E) α farnesene	8.26
δ elemene	0.18
aromadendrene	0.07
cis-muurola-4(14),5-diene	0.35
germacrene d	14.32
bicyclogermacrene	0.27
trans-cadina-1,4-diene	0.23
trans-γ-bisabolene	0.03
trans-cadina-1(6),4-diene	0.29
zonarene	0.22
α cadinene	0.30
α cubebene	0.17
α copaene	1.26
α humulene	3.96
α muurolene	1.77
α Ylangene	0.16
β elemene	0.5
δ cadinene	3.84
β caryophellene	14.8
β cubebene	0.13
γ cadinene	1.16
γ muurolene	1.92
1-epi-Bicyclosesquiphellandrene	0.57

### Phenols 0.55%

methyl chavicol	0.09
(E) anethole	0.03
eugenol	0.39
methyl eugenol	0.04

Raw Material: flowers

Production Method: Steam distillation

Date of Analysis: 8/25/2019

1-epi-cubenol

Client



Source



*Ylang Ylang Compleete (Cananga odorata)*  
MA-58983

Sample

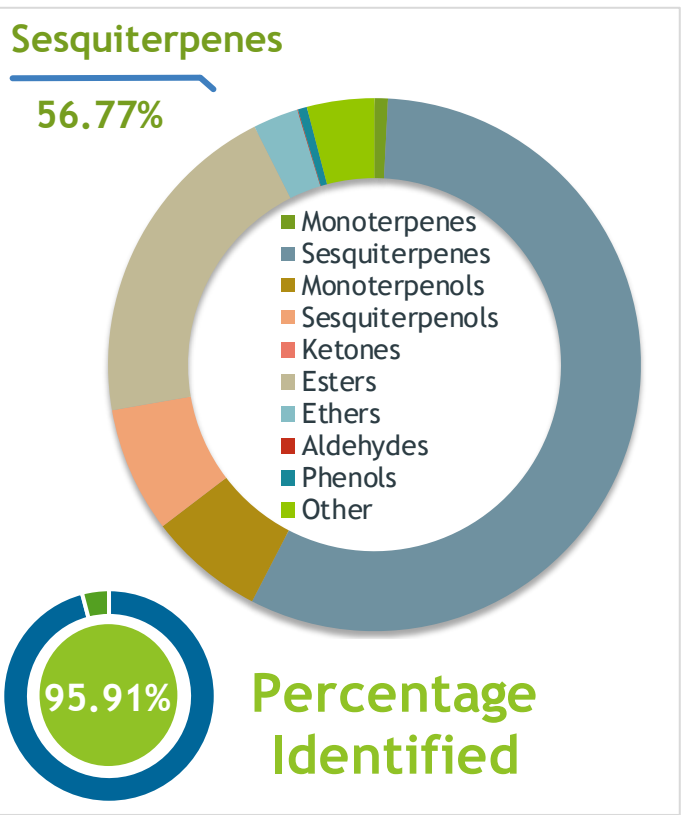
**Ylang Ylang Compleete (Cananga odorata)**

Batch #:..... | MA-58983

Type:..... | Essential Oil

CAS Number:... | 8006-81-3

Nature's Gift



Client



Website



Primary

14.80% | beta-Caryophyllene

14.32% | Germacrene D

8.26% | (E,E)-alpha-Farnesene

Result



Conclusion

No adulterants, Diluents, or contaminants were detected via this method. This oil meets the expected profile for genuine Ylang Ylang Compleete (Cananga odorata) of Ylang Ylang Compleete (Cananga odorata)

Internal Number: | EVS-3189



Essential Validation Services

747 SW 2nd Ave IMB 12 Suite 306  
Gainesville, FL 32601

317.361.5044 |  
<https://essentialvalidation.com/>

adam@essentialvalidation.com



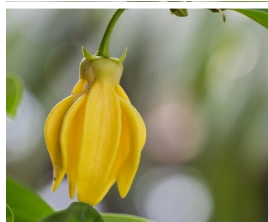
Monoterpenes	0.81%
Sesquiterpenes	56.77%
Monoterpenols	7.03%
Sesquiterpenols	7.63%
Ketones	0.00%
Esters	20.30%
Ethers	2.75%
Aldehydes	0.04%
Phenols	0.55%
Other	4.09%

ESSENTIAL VALIDATION SERVICES | 747 SW 2ND AVE GAINESVILLE, FLORIDA 32601 | 317-361-5044

Client



Source

Ylang Ylang Compleete (*Cananga odorata*)

MA-58983

Total Percentage		95.91%		
Number	RT	Area %	Compound Name	Chemical Family
1	6.32	0.03%	3-Methyl-3-buten-1-yl acetate	Aliphatic Ester
2	7.63	0.10%	Prenyl acetate	Aliphatic Ester
3	8.02	0.14%	alpha-Pinene	Monoterpene
4	9.73	0.04%	beta-Pinene	Monoterpene
5	10.33	0.06%	Myrcene	Monoterpene
6	11.01	0.04%	(Z)-3-Hexenyl acetate	Aliphatic Ester
7	11.34	0.03%	Hexyl acetate	Aliphatic Ester
8	11.57	2.41%	para-Cresyl methyl ether	Monoterpene Ether
9	12.08	0.16%	1,8-Cineole	Monoterpene Ether
10	14.88	1.28%	Methyl benzoate	Phenolic Ester
11	15.31	5.87%	Linalool	Monoterpenol
12	18.08	1.16%	Benzyl acetate	Phenolic Ester
13	18.42	0.03%	Ethyl benzoate	Phenolic Ester
14	19.38	0.03%	Methyl salicylate	Phenolic Ester
15	19.57	0.10%	alpha-Terpineol	Monoterpenol
16	19.72	0.09%	Methyl chavicol	Phenylpropanoid
17	21.01	0.02%	Nerol	Monoterpenol
18	22.23	1.04%	Geraniol	Monoterpenol
19	22.96	0.04%	Geranial	Monoterpene Aldehyde
20	23.72	0.03%	(E)-Anethole	Phenylpropanoid
21	24.17	0.03%	19.94 Phenyl ethane<1-nitro-2->	0.00
22	25.79	0.18%	delta-Elemene	Sesquiterpene
23	26.45	0.17%	alpha-Cubebene	Sesquiterpene
24	26.61	0.39%	Eugenol	Phenylpropanoid
25	27.05	0.02%	Neryl acetate	Monoterpene Ester
26	27.38	0.16%	alpha-Ylangene	Sesquiterpene
27	27.66	1.26%	alpha-Copaene	Sesquiterpene
28	27.96	6.72%	Geranyl acetate	Monoterpene Ester
29	28.21	0.13%	beta-Cubebene	Sesquiterpene
30	28.29	0.50%	beta-Elemene	Sesquiterpene
31	28.79	0.04%	Methyl eugenol	Phenylpropanoid
32	29.54	14.80%	beta-Caryophyllene	Sesquiterpene
33	30.26	0.07%	Aromadendrene	Sesquiterpene
34	30.60	0.84%	(E)-Cinnamyl acetate	Phenylpropanoid Ester
35	30.98	3.96%	alpha-Humulene	Sesquiterpene

ESSENTIAL VALIDATION SERVICES | 747 SW 2<sup>ND</sup> AVE GAINESVILLE, FLORIDA 32601 | 317-361-5044

Client



Source



*Ylang Ylang Compleete (Cananga odorata)*  
MA-58983

Number	RT	Area %	Compound Name	Chemical Family
36	31.243	0.35%	cis-Muurolo-4(14),5-diene	Sesquiterpene
37	31.72	0.29%	trans-Cadina-1(6),4-diene	Sesquiterpene
38	31.88	1.92%	gamma-Muuroloene	Sesquiterpene
39	32.10	14.32%	Germacrene D	Sesquiterpene
40	32.45	0.57%	1-epi-Bicyclosesquiphellandrene	Monoterpene
41	32.64	0.27%	Bicyclogermacrene	Sesquiterpene
42	32.82	1.77%	alpha-Muuroloene	Sesquiterpene
43	32.99	2.58%	(Z,E)-alpha-Farnesene	Sesquiterpene
44	33.22	8.26%	(E,E)-alpha-Farnesene	Sesquiterpene
45	33.37	1.16%	gamma-Cadinene	Sesquiterpene
46	33.64	3.84%	delta-Cadinene	Sesquiterpene
47	33.78	0.22%	Zonarene	Sesquiterpene
48	33.99	0.03%	trans-gamma-Bisabolene	Sesquiterpene
49	34.14	0.23%	trans-Cadina-1,4-diene	Sesquiterpene
50	34.31	0.30%	alpha-Cadinene	Sesquiterpene
51	34.75	0.08%	Elemol	Sesquiterpenol
52	35.36	0.10%	(E)-Nerolidol	Sesquiterpenol
53	35.53	0.02%	Palustrol	Sesquiterpenol
54	35.65	0.04%	(Z)-3-Hexenyl benzoate	Monoterpene Ester
55	35.81	0.08%	Maaliol	Sesquiterpenol
56	35.98	0.18%	Caryophyllene oxide	Sesquiterpene Ether
57	36.14	0.07%	Globulol	Sesquiterpenol
58	36.46	0.11%	Viridiflorol	Sesquiterpenol
59	36.63	0.07%	Guaiol	Sesquiterpenol
60	37.31	0.14%	1,10-di-epi-Cubenol	Sesquiterpenol
61	37.50	0.39%	Junenol	Sesquiterpenol
62	37.79	0.29%	1-epi-Cubenol	Sesquiterpenol
63	38.40	1.72%	T-Muurolol	Sesquiterpenol
64	38.51	0.44%	alpha-Muurolol	Sesquiterpenol
65	38.83	2.26%	alpha-Cadinol	Sesquiterpenol
66	41.18	1.83%	(E,Z)-Farnesol	Sesquiterpenol
67	41.89	0.03%	(E,E)-Farnesol	Sesquiterpenol
68	42.84	6.34%	Benzyl benzoate	Phenolic Ester
69	45.34	1.95%	(E,E)-Farnesyl acetate	Sesquiterpene Ester
70	46.31	1.56%	Benzyl salicylate	Phenolic Ester
71	49.46	0.13%	Geranyl benzoate	Diterpene Ester