

Sample:

Client: | Nature's Gift
Sample: | Thyme (Thymus vulgaris)
Batch # | SP-58786
CAS Number | 8007-46-3
Type: | Essential Oil

Conclusion:

- No adulterants, diluents, or contaminants were detected via this method.
- This oil meets the expected profile for genuine essential oil of Thyme (Thymus vulgaris).



X 

Validated By:

Essential Validation Services

747 SW 2nd Ave, Gainesville, FL 32601

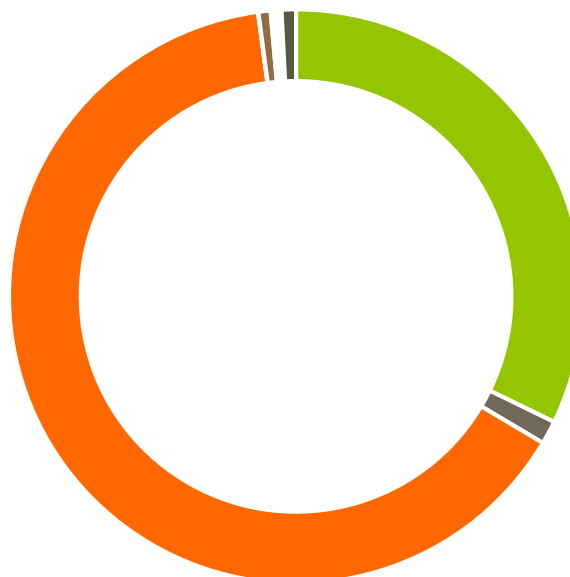
Phone: 317-361-5044 E-mail: Adam@essentialvalidationservices.com

Summary of Analyses

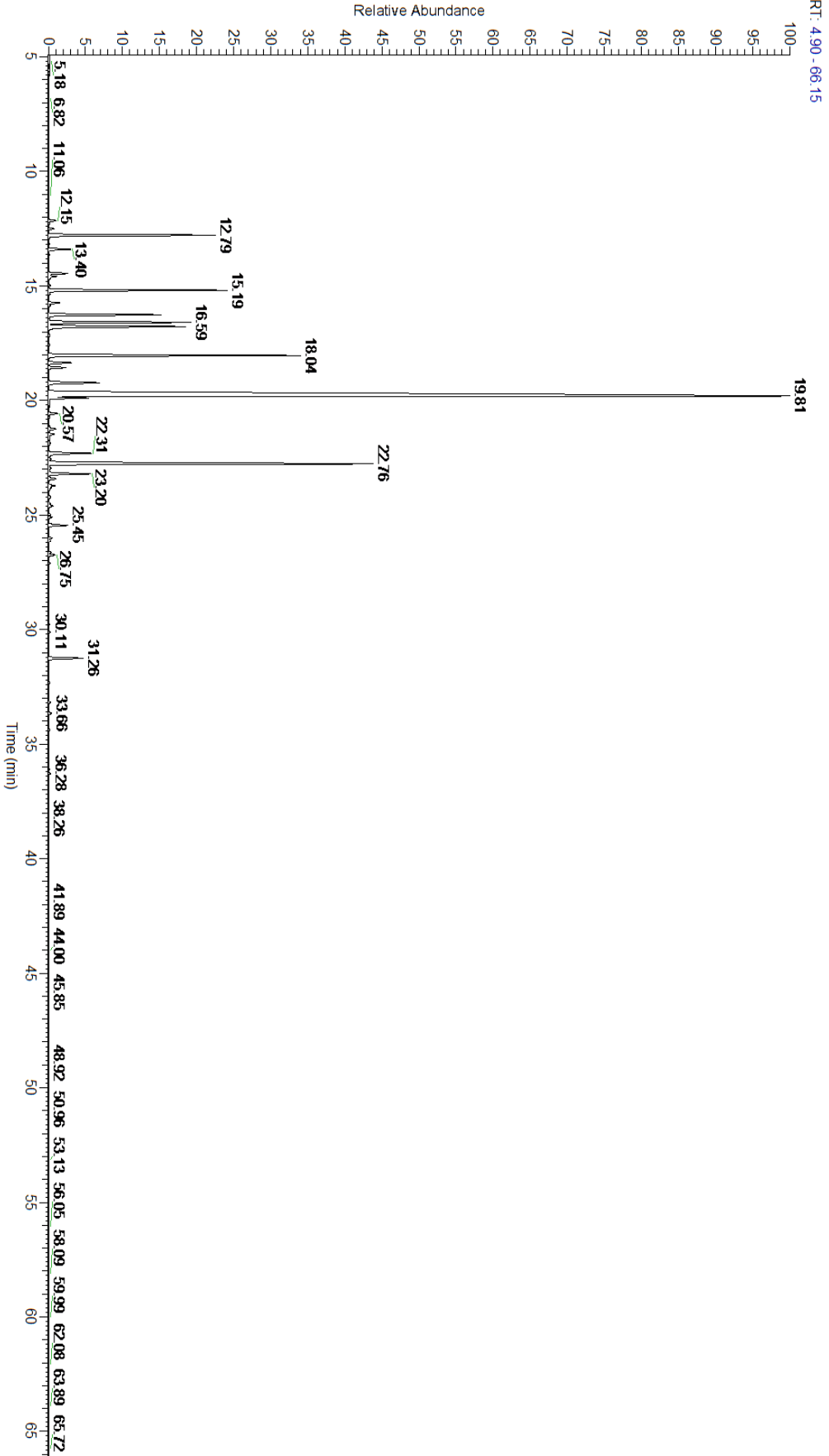
A fresh sample of Thyme (Thymus vulgaris) Essential Oil (10 uL in .5to.5 mL Hexane + ETOH) was prepared and analyzed via split injection GC/EI-MS.

Main Compounds	Percentages
Linalool	44.96%
Terpinen-4-ol	11.28%
gamma-Terpinene	7.69%
Myrcene	5.15%
alpha-Pinene	4.98%
Limonene	4.41%
para-Cymene	4.32%
alpha-Terpinene	3.42%
cis-Sabinene hydrate	1.74%
Borneol	1.45%
alpha-Terpineol	1.29%
beta-Caryophyllene	1.04%
Hotrienol	1.01%

Monoterpenes	Sesquiterpenes	Monoterpenols	Sesquiterpenols	Ketones
32.21%	1.32%	64.35%	0.02%	0.68%
Esters	Ethers	Aldehydes	Phenols	Other
0.19%	0.20%	0.11%	0.11%	0.81%



- Monoterpenes ■ Sesquiterpenes ■ Monoterpenols
- Sesquiterpenols ■ Ketones ■ Esters
- Ethers ■ Phenols ■ Other



Total Percentage		99.29%			
Peak Number	RT	Area %	Compound Name	RI	Chemical Family
1	12.15	0.22%	Hashishene	922.00	Monoterpene
2	12.29	0.02%	Tricyclene	923.00	Monoterpene
3	12.51	0.14%	alpha-Thujene	927.80	Monoterpene
4	12.79	4.98%	alpha-Pinene	936.10	Monoterpene
5	13.40	0.64%	Camphene	950.30	Monoterpene
6	13.65	0.01%	Thuja-2,4(10)-diene	953.00	Monoterpene
7	14.46	0.56%	Sabinene	973.00	Monoterpene
8	14.59	0.23%	beta-Pinene	974.00	Monoterpene
9	14.67	0.05%	1-Octen-3-ol	980.00	Aliphatic Alcohol
10	14.97	0.06%	Octan-3-one	981.00	Aliphatic Ketone
11	15.19	5.15%	Myrcene	989.20	Monoterpene
12	15.35	0.05%	3-Octanol	992.00	Aliphatic Alcohol
13	15.74	0.33%	alpha-Phellandrene	1002.00	Monoterpene
14	15.87	0.04%	delta-3-Carene	1008.00	Monoterpene
15	16.26	3.42%	alpha-Terpinene	1014.00	Monoterpene
16	16.59	4.32%	para-Cymene	1024.30	Monoterpene
17	16.78	4.41%	Limonene	1029.50	Monoterpene
18	17.17	0.02%	(Z)-beta-Ocimene	1037.80	Monoterpene
19	17.56	0.03%	(E)-beta-Ocimene	1047.70	Monoterpene
20	18.04	7.69%	gamma-Terpinene	1054.00	Monoterpene
21	18.35	0.72%	trans-Sabinene hydrate	1072.00	Monoterpenol
22	18.57	0.51%	cis-Linalool oxide (5) (furanoid)	1075.10	Monoterpenol
23	19.22	1.74%	cis-Sabinene hydrate	1094.50	Monoterpenol
24	19.81	44.96%	Linalool	1099.00	Monoterpenol
25	19.89	1.01%	Hotrienol	1106.80	Monoterpenol
26	20.57	0.28%	cis-para-Menth-2-en-1-ol	1118.25	Monoterpenol
27	21.24	0.24%	trans-para-Menth-2-en-1-ol	1141.75	Monoterpenol
28	21.47	0.18%	Camphor	1147.55	Monoterpene Ketone
29	22.31	1.45%	Borneol	1168.71	Monoterpenol
30	22.76	11.28%	Terpinen-4-ol	1180.57	Monoterpenol
31	23.20	1.29%	alpha-Terpineol	1191.71	Monoterpenol
32	23.43	0.25%	cis-Dihydrocarvone	1197.57	Monoterpene Ketone
33	23.72	0.19%	trans-Dihydrocarvone	1203.83	Monoterpene Ketone
34	23.81	0.08%	trans-Piperitol	1208.50	Monoterpenol
35	24.49	0.05%	Nerol	1230.67	Monoterpenol
36	24.60	0.14%	Methyl thymol	1234.57	Monoterpene Ether
37	25.09	0.11%	Carvacrolmethylether	1247.50	Phenylpropanoid
38	25.45	0.62%	Geraniol	1255.29	Monoterpenol
39	25.99	0.11%	Geranial	1272.00	Monoterpene Aldehyde
40	26.63	0.07%	Thymol	1288.15	Monoterpenol
41	26.75	0.19%	Bornyl acetate	1288.29	Monoterpene Ester
42	27.09	0.05%	Carvacrol	1304.40	Monoterpenol
43	30.11	0.05%	beta-Bourbonene	1388.70	Sesquiterpene



44	31.26	1.04%	beta-Caryophyllene	1427.14	Sesquiterpene
45	32.32	0.03%	alpha-Humulene	1461.43	Sesquiterpene
46	33.18	0.05%	Germacrene D	1484.71	Sesquiterpene
47	33.66	0.10%	alpha-Muurolene	1500.25	Sesquiterpene
48	34.15	0.01%	gamma-Cadinene	1515.29	Sesquiterpene
49	34.39	0.04%	delta-Cadinene	1524.14	Sesquiterpene
50	36.08	0.02%	Spathulenol	1587.00	Sesquiterpenol
51	36.28	0.06%	Caryophyllene oxide	1594.86	Sesquiterpene Ether

ESSENTIAL VALIDATION SERVICES | 747 SW 2ND AVE GAINESVILLE, FLORIDA 32601 | 317-361-5044

- This report is the digitally signed and will only be considered valid if the signature is intact.
- This report may not be published without the consent of Essential Validation Services.
- Chromatograph image may not show full run time