



316 Old Hickory Blvd East, Madison, TN 37115

tel (615)612-4270 fax (615)860-9171

sold@naturesgift.com

Balancing Body, Mind and Spirit with Pure Essential Oils

Since 1995

www.naturesgift.com

## Tea Tree

*Melaleuca alternifolia*

Australia

Batch No. AU-59073

Monoterpenes	41.31%
γ terpinene	18.71
α terpinene	9.20
terpinolene	3.22
para cymene	2.70
α pinene	2.48
limonene	1.58
α thujene	0.92
myrcene	0.85
β pinene	0.75
α phellandrene	0.47
sabinene	0.37
para-cymenene	0.06

Ethers	3.12%
1,8 cineole	3.12

Ketones	0.06%
piperitone	0.06

Other	0.03%
cis-hex-3-en-1-ol	0.03

Phenols	0.01%
methyl eugenol	0.01

Monoterpenols	47.02%
terpinen-4-ol	42.86
α terpineol	3.30
cis-para-Menth-2-en-1-ol	0.24
trans-para-menth-2-en-1-ol	0.18
linalool	0.12
trans-piperitol	0.11
para-cymen-8-ol	0.07
trans-ascaridol glycol	0.05
trans-sabinene hydrate	0.04
terpinen-1-ol	0.02
nerol	0.02
fenchol	0.01

Sesquiterpenes	6.41%
aromadendrene	1.16
β cadinene	1.03
γ gurjunene	0.89
bicyclogermacrene	0.53
allo-aromadendrene	0.51
cis caryophyllene	0.38
trans-cadina-1(6),4-diene	0.32
α gurjunene	0.30
δ elemene	0.24
trans-Cadina-1,4-diene	0.18
α copaene	0.16
trans-Muurolo-3,5-diene	0.14
α muurolole	0.13
α humulene	0.11
trans-calamenene	0.07
isolekene	0.06
longigolene	0.06
α cubebene	0.05
γ muurolole	0.03
β elemene	0.02
β gurjunene	0.02
γ cadinene	0.02

Sesquiterpenols	0.76%
maaliol	0.19
1-epi-cubenol	0.13
viridiflorol	0.10
rosifoliol	0.08
longipinanol	0.07
isopathulenol	0.06
palustrol	0.05
sputhulenol	0.04
gleenol	0.02
α muurolole	0.02

Raw Material: Melaleuca alternifolia

Production Steam Dist., leaves

Date of Analysis: 6/19/2020

Client



Source



Tea Tree (*Melaleuca alternifolia*)  
AU-59073

Sample

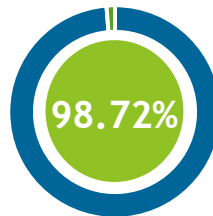
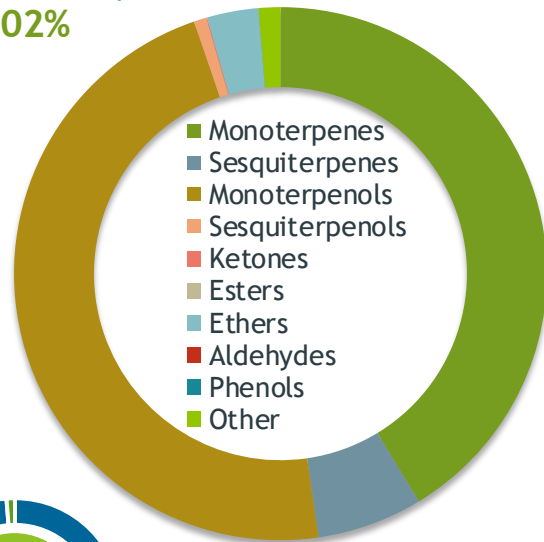
Tea Tree (*Melaleuca alternifolia*)

Batch #:..... AU-59073  
Type:..... Essential Oil  
CAS Number:... 68647-73-4

Nature's Gift

Monoterpenols

47.02%



Percentage Identified

Client



Website



Primary

**42.86%** | Terpinen-4-ol  
**18.71%** | gamma-Terpinene  
**9.20%** | alpha-Terpinene

Result



Conclusion

No adulterants, diluents, or contaminants were detected via this method. This oil meets the expected profile for genuine Essential Oil of Tea Tree (*Melaleuca alternifolia*)

Internal Number: | EVS-3753



Essential Validation Services

747 SW 2nd Ave IMB 12 Suite 306  
Gainesville, FL 32601

317.361.5044 | <https://essentialvalidationservices.com/>  
adam@essentialvalidationservices.com

Monoterpenes	41.31%	41.31%
Sesquiterpenes	6.41%	6.41%
Monoterpenols	47.02%	47.02%
Sesquiterpenols	0.76%	0.76%
Ketones	0.06%	0.06%
Esters	0.00%	0.00%
Ethers	3.12%	3.12%
Aldehydes	0.00%	0.00%
Phenols	0.01%	0.01%
Other	1.31%	1.31%

- Essential Oil testing is performed by using qualitative GC-MS. Method: SOP.T.01 Client Method  
- This report may not be published without the consent of Essential Validation Services.  
- Chromatograph image may be requested  
- This report is valid for 1 year from the analyzed date

Client



Source

Tea Tree (*Melaleuca alternifolia*)

AU-59073

Total Percentage		98.72%		
Number	RT	Area %	Compound Name	Chemical Family
1	5.91	0.03%	cis-Hex-3-en-1-ol	Aliphatic Alcohol
2	8.30	0.92%	alpha-Thujene	Monoterpene
3	8.56	2.48%	alpha-Pinene	Monoterpene
4	10.15	0.37%	Sabinene	Monoterpene
5	10.32	0.75%	beta-Pinene	Monoterpene
6	10.90	0.85%	Myrcene	Monoterpene
7	11.56	0.47%	alpha-Phellandrene	Monoterpene
8	12.06	9.20%	alpha-Terpinene	Monoterpene
9	12.38	2.70%	para-Cymene	Monoterpene
10	12.60	1.58%	Limonene	Monoterpene
11	12.69	3.12%	1,8-Cineole	Monoterpene Ether
12	13.96	18.71%	gamma-Terpinene	Monoterpene
13	14.43	0.04%	trans-Sabinene hydrate	Monoterpenol
14	15.16	3.22%	Terpinolene	Monoterpene
15	15.35	0.06%	para-Cymenene	Monoterpene
16	15.85	0.12%	Linalool	Monoterpenol
17	16.65	0.01%	Fenchol	Monoterpenol
18	16.92	0.24%	cis-para-Menth-2-en-1-ol	Monoterpenol
19	17.47	0.02%	Terpinen-1-ol	Monoterpenol
20	17.76	0.18%	trans-para-Menth-2-en-1-ol	Monoterpenol
21	19.64	42.86%	Terpinen-4-ol	Monoterpenol
22	19.83	0.07%	para-Cymen-8-ol	Monoterpenol
23	20.21	3.30%	alpha-Terpineol	Monoterpenol
24	20.85	0.11%	trans-Piperitol	Monoterpenol
25	21.60	0.02%	Nerol	Monoterpenol
26	22.82	0.06%	Piperitone	Monoterpene Ketone
27	23.74	0.05%	trans-Ascaridol glycol	Monoterpenol
28	26.36	0.24%	delta-Elemene	Sesquiterpene
29	27.02	0.05%	alpha-Cubebene	Sesquiterpene
30	28.01	0.06%	Isolatedene	Sesquiterpene
31	28.22	0.16%	alpha-Copaene	Sesquiterpene
32	28.83	0.02%	beta-Elemene	Sesquiterpene
33	29.31	0.01%	Methyl eugenol	Phenylpropanoid
34	29.54	0.30%	alpha-Gurjunene	Sesquiterpene
35	30.02	0.38%	cis-Caryophyllene	Sesquiterpene

ESSENTIAL VALIDATION SERVICES | 747 SW 2<sup>ND</sup> AVE GAINESVILLE, FLORIDA 32601 | 317-361-5044

- Essential Oil testing is performed by using qualitative GC-MS. Method: SOP.T.01 Client Method  
 - This report may not be published without the consent of Essential Validation Services.  
 - Chromatograph image may be requested  
 - This report is valid for 1 year from the analyzed date

Client



Source

Tea Tree (*Melaleuca alternifolia*)

AU-59073

Number	RT	Area %	Compound Name	Chemical Family
36	30.341	0.06%	Longifolene	Sesquiterpene
37	30.47	0.02%	beta-Gurjunene	Sesquiterpene
38	30.80	1.16%	Aromadendrene	Sesquiterpene
39	31.25	0.14%	trans-Muurolo-3,5-diene	Sesquiterpene
40	31.49	0.11%	alpha-Humulene	Sesquiterpene
41	31.68	0.51%	allo-Aromadendrene	Sesquiterpene
42	32.22	0.32%	trans-Cadina-1(6),4-diene	Sesquiterpene
43	32.34	0.03%	gamma-Muurolole	Sesquiterpene
44	32.99	0.89%	gamma-Gurjunene	Sesquiterpene
45	33.15	0.53%	Bicyclogermacrene	Sesquiterpene
46	33.32	0.13%	alpha-Muurolole	Sesquiterpene
47	33.87	0.02%	gamma-Cadinene	Sesquiterpene
48	34.11	1.03%	beta-Cadinene	Sesquiterpene
49	34.20	0.07%	trans-Calamenene	Sesquiterpene
50	34.63	0.18%	trans-Cadina-1,4-diene	Sesquiterpene
51	35.74	0.07%	Longipinanol	Sesquiterpenol
52	36.03	0.05%	Palustrol	Sesquiterpenol
53	36.29	0.04%	Spathulenol	Sesquiterpenol
54	36.64	0.19%	Maaliol	Sesquiterpenol
55	36.75	0.02%	Gleenol	Sesquiterpenol
56	36.96	0.10%	Viridiflorol	Sesquiterpenol
57	38.12	0.08%	Rosifoliol	Sesquiterpenol
58	38.27	0.13%	1-epi-Cubenol	Sesquiterpenol
59	38.45	0.06%	Isospathulenol	Sesquiterpenol
60	38.97	0.02%	alpha-Muurolol	Sesquiterpenol

ESSENTIAL VALIDATION SERVICES | 747 SW 2<sup>ND</sup> AVE GAINESVILLE, FLORIDA 32601 | 317-361-5044

- Essential Oil testing is performed by using qualitative GC-MS. Method: SOP.T.01 Client Method  
 - This report may not be published without the consent of Essential Validation Services.  
 - Chromatograph image may be requested  
 - This report is valid for 1 year from the analyzed date