

Sample:

Client: | Nature's Gift
Sample: | Spikenard (Nardostachys jatamansi)
Batch # | NE-58733
Cas Number | 8022-22-8
Type: | Essential Oil

Conclusion:

- No adulterants, diluents, or contaminants were detected via this method.
- This oil meets the expected profile for genuine essential oil of Spikenard (Nardostachys jatamansi).



X 

Validated By:

Essential Validation Services

747 SW 2nd Ave, Gainesville, FL 32601

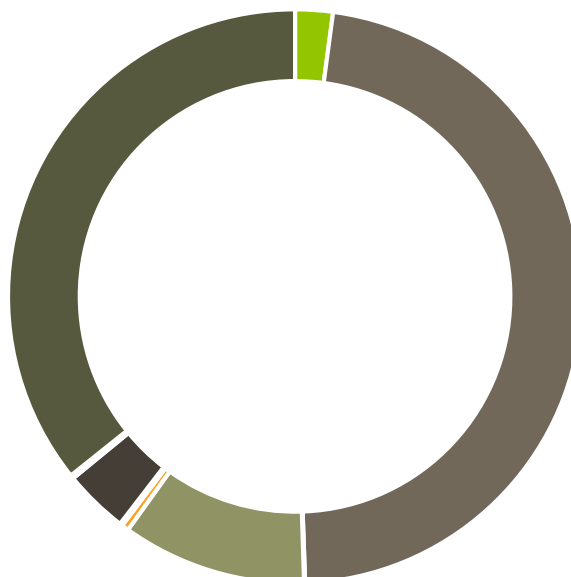
Phone: 317-361-5044 E-mail: Adam@essentialvalidationservices.com

Summary of Analyses

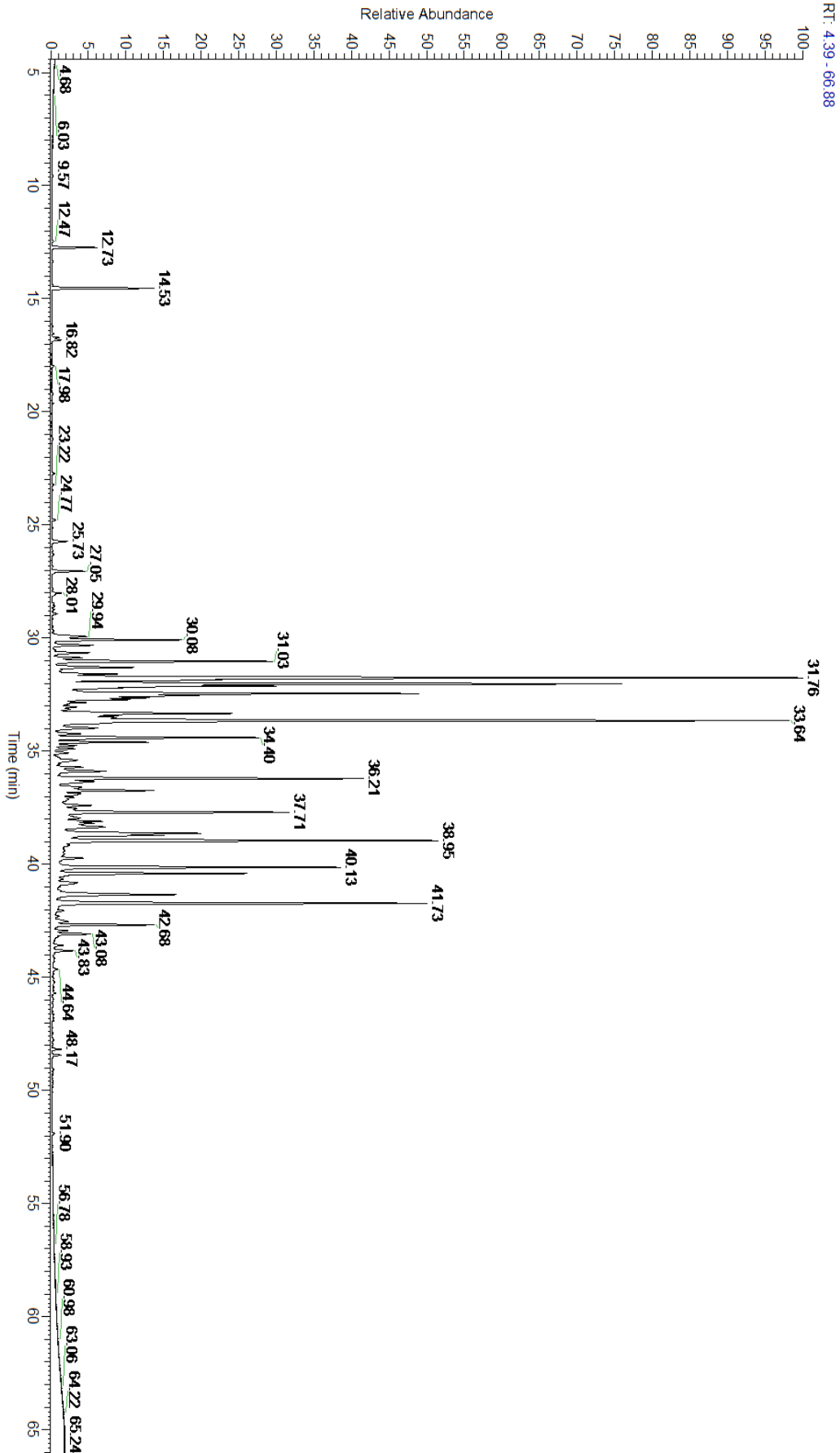
A fresh sample of Spikenard (Nardostachys jatamansi) Essential Oil (10 uL in .5to.5 mL Hexane + ETOH) was prepared and analyzed via split injection GC/EI-MS.

Main Compounds	Percentages
beta-Gurjunene	11.98%
Valencene (Co-Eluting)	10.54%
6,9-Guaiadiene	6.91%
Jatamansone	4.99%
UK Spikenard	4.94%
Seychellene	4.52%
Spathulenol	3.87%
Valerenal	3.63%
T-Cadinol	2.97%
UK Spikenard	2.83%
alpha-Gurjunene	2.81%
gamma-Patchoulene	2.70%
UK Spikenard	2.34%

Monoterpenes	Sesquiterpenes	Monoterpenols	Sesquiterpenols	Ketones
2.12%	47.32%	0.06%	10.39%	0.00%
Esters	Ethers	Aldehydes	Phenols	Other
0.40%	0.15%	3.63%	0.20%	35.73%



- Monoterpenes ■ Sesquiterpenes ■ Monoterpenols
- Sesquiterpenols ■ Ketones ■ Esters
- Ethers ■ Phenols ■ Other



Total Percentage		64.27%			
Peak Number	RT	Area %	Compound Name	RI	Chemical Family
1	12.47	0.02%	alpha-Thujene	927.80	Monoterpene
2	12.73	0.48%	alpha-Pinene	936.10	Monoterpene
3	13.35	0.01%	Camphene	950.30	Monoterpene
4	14.41	0.01%	Sabinene	973.00	Monoterpene
5	14.53	1.13%	beta-Pinene	974.00	Monoterpene
6	16.22	0.01%	alpha-Terpinene	1014.00	Monoterpene
7	16.54	0.02%	para-Cymene	1024.30	Monoterpene
8	16.73	0.08%	Limonene	1029.50	Monoterpene
9	16.82	0.11%	1,8-Cineole	1031.80	Monoterpene Ether
10	17.98	0.02%	gamma-Terpinene	1054.00	Monoterpene
11	19.21	0.01%	Terpinolene	1092.10	Monoterpene
12	19.63	0.01%	Linalool	1099.00	Monoterpenol
13	22.72	0.03%	Terpinen-4-ol	1180.57	Monoterpenol
14	23.22	0.02%	alpha-Terpineol	1191.71	Monoterpenol
15	24.77	0.04%	Methyl thymol	1234.57	Monoterpene Ether
16	25.73	0.20%	Carvacrolmethylether	1247.50	Phenylpropanoid
17	27.05	0.40%	Methyl myrtenate	1305.00	Monoterpene Ester
18	28.48	0.02%	delta-Elemene	1335.83	Sesquiterpene
19	29.94	0.58%	UK Spikenard		
20	30.08	1.62%	beta-Patchoulene	1380.00	Sesquiterpene
21	30.31	0.51%	beta-Elemene	1389.20	Sesquiterpene
22	31.03	2.81%	alpha-Gurjunene	1412.00	Sesquiterpene
23	31.30	0.97%	beta-Caryophyllene	1427.14	Sesquiterpene
24	31.59	0.72%	UK Spikenard		
25	31.76	11.98%	beta-Gurjunene	1433.00	Sesquiterpene
26	32.02	6.91%	6,9-Guaiadiene	1446.00	Sesquiterpene
27	32.12	2.70%	gamma-Patchoulene	1454.00	Sesquiterpene
28	32.21	0.64%	UK Spikenard		
29	32.45	4.52%	Seychellene	1461.40	Sesquiterpene
30	32.55	1.60%	Caryophyllene isomer		
31	32.63	0.99%	cis-Muurola-4(14),5-diene	1465.75	Sesquiterpene
32	32.72	0.74%	allo-Aromadendrene	1471.00	Sesquiterpene
33	32.85	0.25%	UK Spikenard		
34	32.93	0.03%	UK Spikenard		
35	33.05	0.15%	delta-Patchoulene	1476.30	Sesquiterpene
36	33.15	0.09%	UK Spikenard		
37	33.34	2.30%	beta-Selinene	1487.57	Sesquiterpene
38	33.43	0.65%	UK Spikenard		
39	33.52	0.56%	delta-Selinene	1494.00	Sesquiterpene
40	33.64	10.54%	Valencene	1504.00	Sesquiterpene
41	33.66	Co-Eluting	UK Spikenard		
42	33.97	0.54%	UK Spikenard		
43	34.24	0.33%	beta-Curcumene	1512.00	Monoterpene



ESSENTIAL VALIDATION SERVICES | 747 SW 2ND AVE GAINESVILLE, FLORIDA 32601 | 317-361-5044

44	34.40	2.83%	UK Spikenard		
45	34.60	1.07%	UK Spikenard		
46	34.75	0.26%	UK Spikenard		
47	34.90	0.24%	UK Spikenard		
48	35.07	0.18%	UK Spikenard		
49	35.40	0.42%	UK Spikenard		
50	35.71	0.36%	UK Spikenard		
51	35.88	0.72%	UK Spikenard		
52	36.21	3.87%	Spathulenol	1587.00	Sesquiterpenol
53	36.34	0.61%	UK Spikenard		
54	36.60	0.38%	UK Spikenard		
55	36.74	1.27%	Viridiflorol	1596.00	Sesquiterpenol
56	36.88	0.39%	UK Spikenard		
57	37.05	0.15%	UK Spikenard		
58	37.40	0.41%	UK Spikenard		
59	37.54	0.20%	UK Spikenard		
60	37.71	2.97%	T-Cadinol	1640.43	Sesquiterpenol
61	37.95	0.34%	T-Muurolol	1643.29	Sesquiterpenol
62	38.10	0.49%	UK Spikenard		
63	38.19	0.33%	UK Spikenard		
64	38.36	0.83%	UK Spikenard		
65	38.62	1.94%	Patchouli alcohol	1660.50	Sesquiterpenol
66	38.95	4.99%	Jatamansone		
67	40.13	3.63%	Valerenal	1717.75	Sesquiterpene Aldehyde
68	40.41	2.34%	UK Spikenard		
69	41.35	1.92%	UK Spikenard		
70	41.73	4.94%	UK Spikenard		
71	42.53	0.23%	UK Spikenard		
72	42.68	1.15%	UK Spikenard		
73	43.08	0.45%	UK Spikenard		
74	43.58	0.12%	UK Spikenard		
75	43.83	0.24%	UK Spikenard		