

Sample:

Client: | Nature's Gift
Sample: | Sandalwood (Santalum Spicatum)
Batch # | AU-HG-50
CAS Number | 8024-35-9
Type: | Essential Oil

Conclusion:

- No adulterants, diluents, or contaminants were detected via this method.
- This oil meets the expected profile for genuine essential oil of Sandalwood (Santalum Spicatum).

X



Validated By:



Essential Validation Services

747 SW 2nd Ave, Gainesville, FL 32601

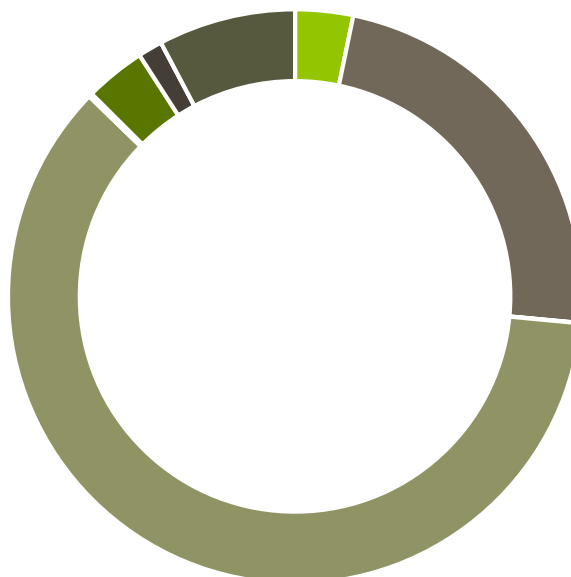
Phone: 317-361-5044 E-mail: Adam@essentialvalidationservices.com

Summary of Analyses

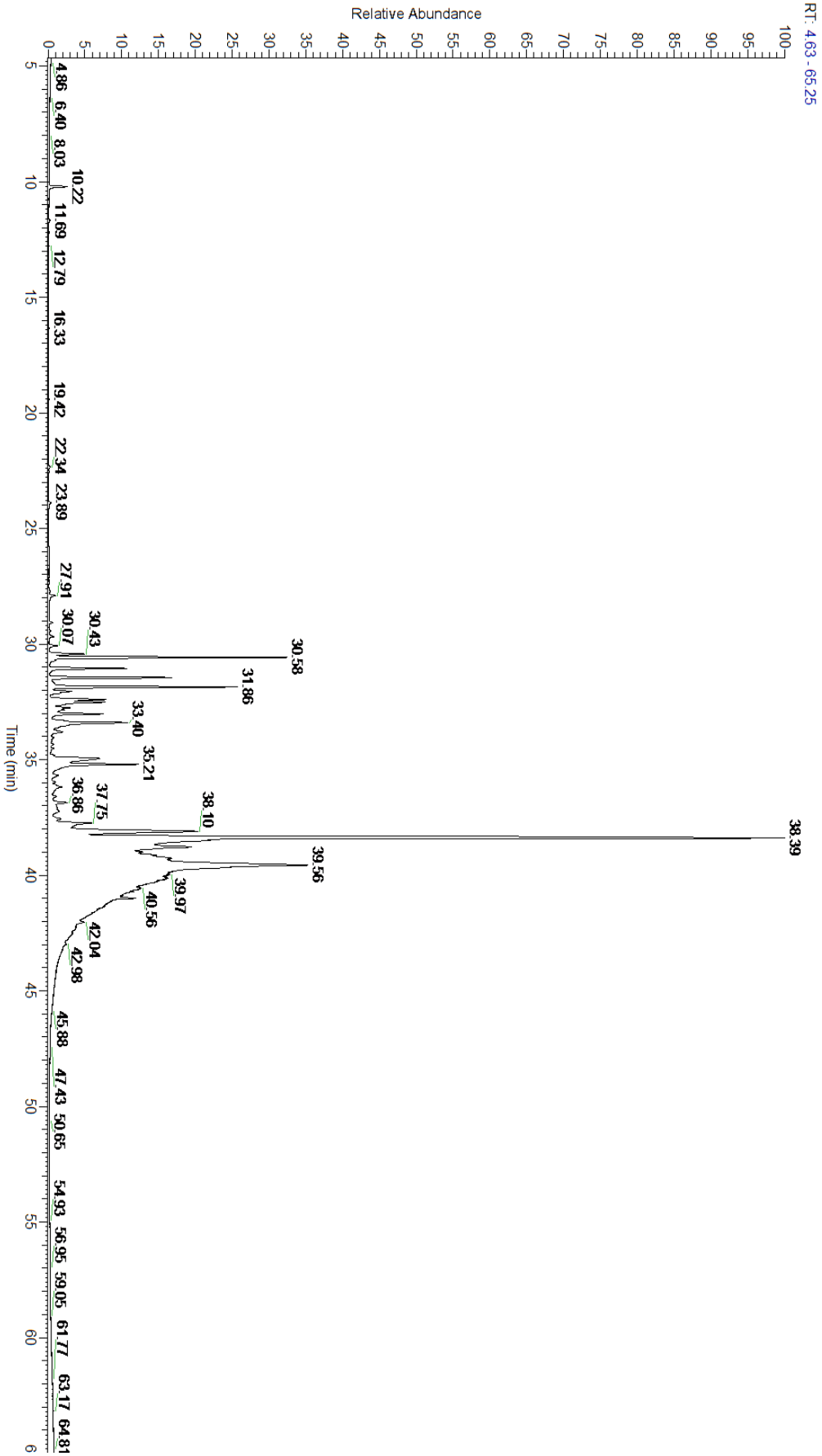
A fresh sample of Sandalwood (Santalum Spicatum) essential oil (10 uL in .5to.5 mL Hexane + ETOH) was prepared and analyzed via split injection GC/EI-MS.

Main Compounds	Percentages
cis-alpha-Santalol	30.17%
cis-beta-Santalol	14.17%
alpha-Santalene	5.81%
beta-Bisabolol	5.11%
beta-Santalene	4.68%
beta-Curcumene	3.24%
(Z)-trans-alpha-Bergamotol	3.23%
epi-beta-Santalene	3.00%
Dendrolasin	2.96%
(E)-Nerolidol	2.87%
gamma-Curcumene	1.95%
trans-alpha-Bergamotene	1.90%
beta-Acoradiene	1.75%

Monoterpenes	Sesquiterpenes	Monoterpenols	Sesquiterpenols	Ketones
3.26%	23.22%	0.02%	60.77%	0.05%
Esters	Ethers	Aldehydes	Phenols	Other
0.15%	3.41%	1.38%	0.00%	7.74%



- Monoterpenes ■ Sesquiterpenes ■ Monoterpenols
- Sesquiterpenols ■ Ketones ■ Esters
- Ethers ■ Phenols ■ Other



Total Percentage		92.71%			
Peak Number	RT	Area %	Compound Name	RI	Chemical Family
1	10.22	0.45%	Santene	884.00	Normonoterpene
2	11.69	0.02%	Tricyclene	923.00	Monoterpene
3	22.34	0.05%	Santalone	1177.25	Ketone
4	24.08	0.02%	Citronellol	1229.25	Monoterpenol
5	27.91	0.20%	alpha-Santalal	1335.23	Sesquiterpene Aldehyde
6	29.67	0.13%	beta-Elemene	1389.20	Sesquiterpene
7	30.07	0.22%	alpha-Cedrene	1410.75	Sesquiterpene
8	30.43	0.94%	cis-alpha-Bergamotene	1411.50	Sesquiterpene
9	30.58	5.81%	alpha-Santalene	1426.50	Sesquiterpene
10	30.71	0.19%	beta-Cedrene	1428.00	Sesquiterpene
11	31.05	1.90%	trans-alpha-Bergamotene	1435.00	Sesquiterpene
12	31.46	3.00%	epi-beta-Santalene	1450.25	Sesquiterpene
13	31.71	0.18%	alpha-Acoradiene	1463.00	Sesquiterpene
14	31.86	4.68%	beta-Santalene	1464.00	Sesquiterpene
15	32.40	1.75%	beta-Acoradiene	1475.00	Sesquiterpene
16	32.51	1.95%	gamma-Curcumene	1476.00	Sesquiterpene
17	32.76	0.56%	ar-Curcumene	1480.50	Sesquiterpene
18	32.84	0.46%	beta-Selinene	1487.57	Sesquiterpene
19	33.02	1.37%	alpha-Selinene	1492.50	Sesquiterpene
20	33.40	3.24%	beta-Curcumene	1512.00	Monoterpene
21	33.80	0.50%	Sesquicineole	1515.20	Sesquiterpenol
22	34.34	0.08%	trans-gamma-Bisabolene	1535.65	Sesquiterpene
23	34.95	2.87%	(E)-Nerolidol	1567.00	Sesquiterpenol
24	35.21	2.96%	Dendrolasin	1573.35	Sesquiterpene Ether
25	36.18	0.45%	Humulene epoxide II	1606.43	Sesquiterpene Ether
26	36.60	0.10%	alpha-Acorenol	1629.50	Sesquiterpenol
27	37.09	0.18%	UK Sandalwood		
28	37.23	0.34%	UK Sandalwood		
29	37.56	0.18%	Himachalol	1648.50	Sesquiterpenol
30	37.75	1.18%	Khusilal	1653.00	Sesquiterpene Aldehyde
31	38.10	5.11%	beta-Bisabolol	1666.25	Sesquiterpenol
32	38.39	30.17%	cis-alpha-Santalol	1668.00	Sesquiterpenol
33	38.77	3.23%	(Z)-trans-alpha-Bergamotol	1684.20	Sesquiterpenol
34	39.00	0.10%	UK Sandalwood		
35	39.14	0.47%	alpha-Bisabolol	1684.43	Sesquiterpenol
36	39.27	1.27%	epi-alpha-Bisabolol	1684.86	Sesquiterpenol
37	39.32	0.28%	trans-alpha-Santalol	1695.00	Sesquiterpenol
38	39.34	0.33%	(Z)-epi-beta-Santalol	1697.23	Sesquiterpenol
39	39.56	14.17%	cis-beta-Santalol	1713.75	Sesquiterpenol
40	39.85	0.41%	(E,E)-Farnesol	1742.60	Sesquiterpenol
41	39.88	0.79%	(Z)-beta-Curcumen-12-ol	1754.00	Sesquiterpenol
42	39.97	0.37%	(E)-Nuciferol	1755.00	Sesquiterpenol
43	40.00	0.52%	cis-Lanceol	1765.00	Sesquiterpenol

