



ESSENTIAL VALIDATION SERVICES | 747 SW 2nd AVE GAINESVILLE, FLORIDA 32601 | 317-361-5044

**Sample:**

---

Client: | Nature's Gift  
Sample: | Sandalwood (Santalum Austro-Caledonicum)  
Batch # | Batch NC-58611  
CAS Number | 8006-87-9  
Type: | Essential Oil

---

**Conclusion:**

- No adulterants, diluents, or contaminants were detected via this method.



X *Adam Christen*

---

Validated By:

Essential Validation Services

747 SW 2nd Ave, Gainesville, FL 32601

Phone: 317-361-5044 E-mail: Adam@essentialvalidationservices.com

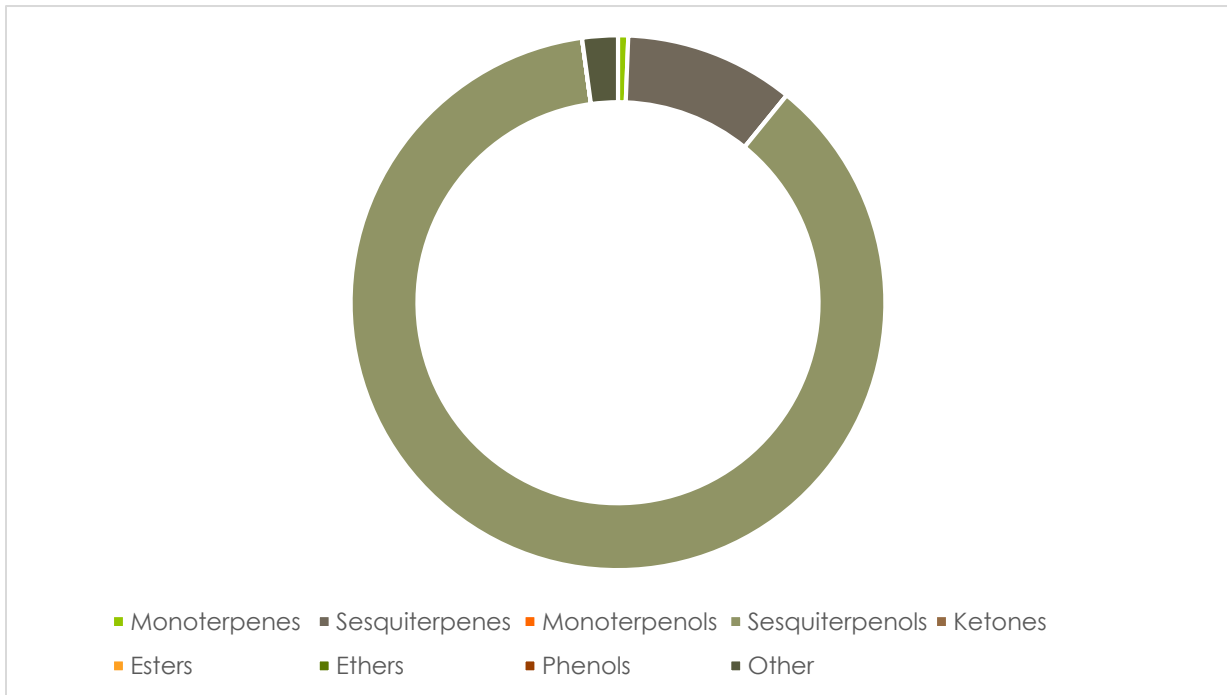
**Summary of Analyses**

---

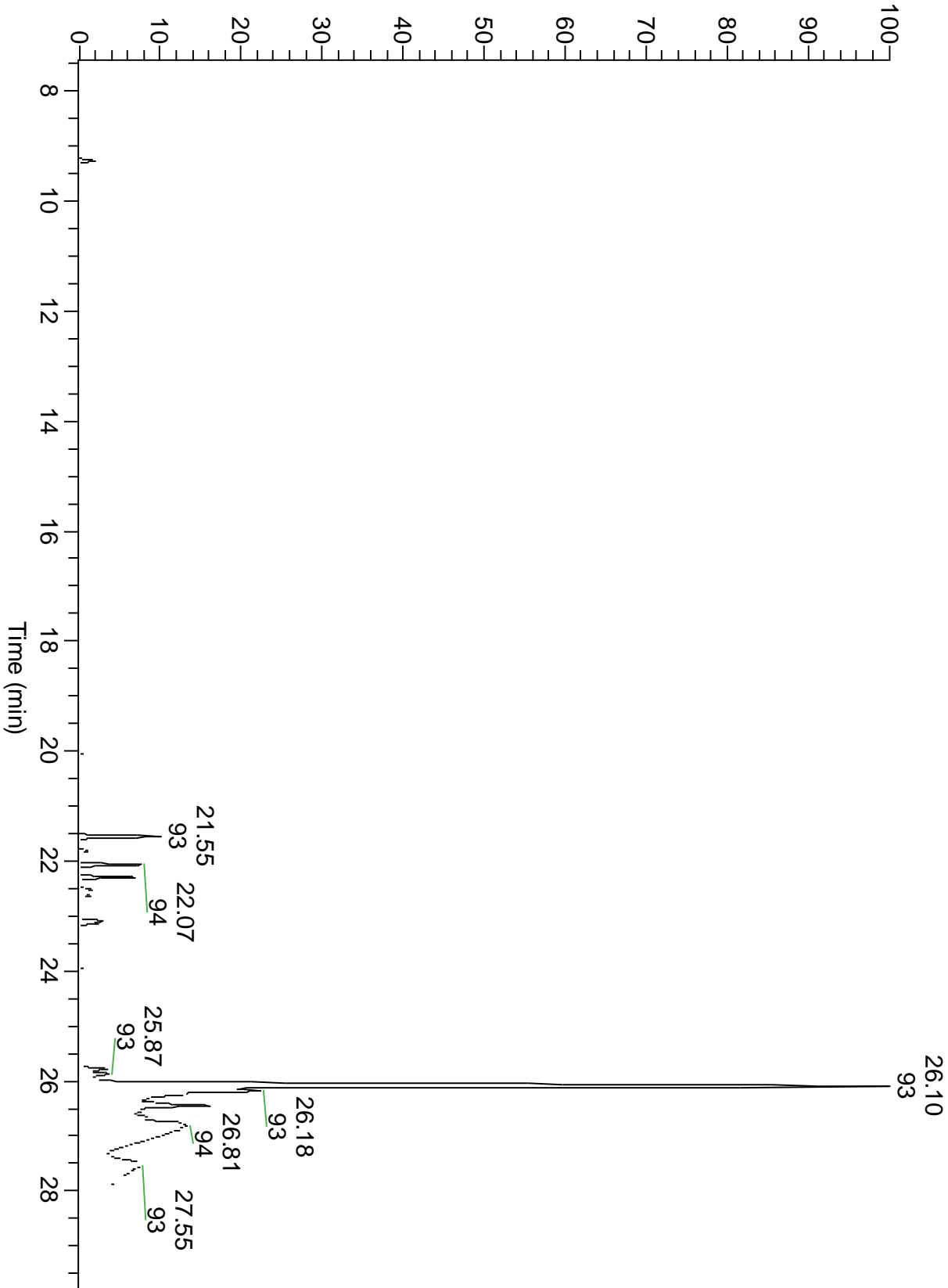
A fresh sample of Sandalwood (Santalum Austro-Caledonicum) Essential Oil (10 uL in .5to.5 mL Hexane + ETOH) was prepared and analyzed via split injection GC/EI-MS.

Main Compounds	Percentages
cis-alpha-Santalol	46.93%
epi-beta-bisabolol	9.04%
trans-alpha-Santalol	8.68%
cis-beta-Santalol	6.43%
(Z)-Nuciferol	3.70%
alpha-Santalene	2.95%
cis-Lanceol	2.81%
(E)-Nuciferol	2.16%
epi-beta-Santalene	2.13%
beta-Santalene	2.02%
(Z)-epi-B-Santalol	1.08%
beta-Bisabolene	0.81%
UK (M/Z:41,43,55,59,65,	0.76%

Monoterpenes	Sesquiterpenes	Monoterpenols	Sesquiterpenols	Ketones
0.58%	9.68%	0.00%	82.11%	0.00%
Esters	Ethers	Aldehydes	Phenols	Other
0.00%	0.00%	0.00%	0.00%	2.03%



RT: 7.42 - 29.93





ESSENTIAL VALIDATION SERVICES | 747 SW 2<sup>ND</sup> AVE GAINESVILLE, FLORIDA 32601 | 317-361-5044

Total Percentage	94.40%				
Peak Number	RT	Area %	Compound Name	RI	Chemical Family
1	7.83	0.16%	Furfural	834.60	Furan
2	9.26	0.63%	Santene	891.33	Normonoterpene
3	20.03	0.12%	UK Sandalwood		
4	21.20	0.02%	7-epi-Sesquithujene	1398.00	Sesquiterpene
5	21.55	2.95%	alpha-Santalene	1426.50	Sesquiterpene
6	21.81	0.35%	trans-alpha-Bergamotene	1435.00	Sesquiterpene
7	22.07	2.13%	epi-beta-Santalene	1450.25	Sesquiterpene
8	22.30	2.02%	beta-Santalene	1464.00	Sesquiterpene
9	22.52	0.52%	beta-Acoradiene	1475.00	Sesquiterpene
10	22.58	0.27%	gamma-Curcumene	1476.00	Sesquiterpene
11	22.62	0.47%	ar-Curcumene	1480.50	Sesquiterpene
12	22.94	0.10%	cis-alpha-Bisabolene	1502.00	Sesquiterpene
13	23.08	0.81%	beta-Bisabolene	1509.86	Sesquiterpene
14	23.13	0.58%	beta-Curcumene	1520.00	Monoterpene
15	23.52	0.04%	trans-gamma-Bisabolene	1535.65	Sesquiterpene
16	23.99	0.37%	(Z)-Nerolidol	1542.25	Sesquiterpenol
17	24.14	0.18%	UK Santalol		
18	24.62	0.18%	UK Sandal		
19	25.78	0.76%	UK (M/Z:41,43,55,59,65,67,77,79		
20	25.87	0.72%	beta-Bisabolol	1670.00	Sesquiterpenol
21	26.10	46.93%	cis-alpha-Santalol	1668.00	Sesquiterpenol
22	26.18	9.04%	epi-beta-bisabolol	1678.50	Sesquiterpenol
23	26.18	Co-Eluting	(Z)-trans-alpha-Bergamotol	1693.00	Sesquiterpenol
24	26.45	8.68%	trans-alpha-Santalol	1695.00	Sesquiterpenol
25	26.68	1.08%	(Z)-epi-B-Santalol	1697.23	Sesquiterpenol
26	26.81	6.43%	cis-beta-Santalol	1713.75	Sesquiterpenol
27	26.89	3.70%	(Z)-Nuciferol	1724.50	Sesquiterpenol
28	27.36	0.19%	(E,E)-Farnesol	1742.60	Sesquiterpenol
29	27.49	2.16%	(E)-Nuciferol	1755.00	Sesquiterpenol
30	27.55	2.81%	cis-Lanceol	1765.00	Sesquiterpenol