



316 Old Hickory Blvd East, Madison, TN 37115

tel (615)612-4270 fax (615)860-9171

sold@naturesgift.com

Balancing Body, Mind and Spirit with Pure Essential Oils

Since 1995

www.naturesgift.com

Ruh Khus

Vetiveria zizanioides

India

Batch #IN-58696

Sesquiterpenes 24.66%

β Vetivenene	4.78
β vetispirene	2.90
α Amorphene	2.78
β Vetivenene isomer I	2.68
δ cadinene	1.96
β acoradiene	1.26
α Vetispirine	1.11
germacrene B	0.92
γ Amorphene	0.73
aromadendrene	0.62
khusimene	0.55
γ calacorene	0.51
γ muurolene	0.48
β calacorene	0.47
γ Vetivenene	0.39
β cedrene	0.34
β caryophyllene	0.32
6,9-guaiadiene	0.25
β Vetivenene isomer II	0.24
α cedrene	0.22
α Ylangene	0.20
α gurjunene	0.18
γ cadinene	0.16
α copaene	0.14
cyclosativene	0.13
β elemene	0.13
diepi-α-cedrene	0.08
daucene	0.06
β cubebene	0.04
α cubebene	0.03

Sesquiterpenols 43.43%

khusimol	11.43
isovalencenol	10.78
valerianol	5.80
10-epi-γ-eudesmol + 1-epi-cubenol	5.68
vetiselinenol	3.63
τ-cadinol	1.30
Cyclocopacampha-12-ol (epimer B)	1.05
epi-zizanone	1.00
cis-β-santalol	0.96
Cyclocopacampha-12-ol (epimer A)	0.95
globulol	0.46
τ muurolol	0.21
guaiol	0.18

Aldehydes 2.87%

(E)-isovalencenal	1.99
zizanal	0.44
valerenal	0.44

Ketones 11.79%

α Vetivone	6.14
β Vetivone	4.60
khusimone	0.63
Nootkatone	0.30
junipercamphor	0.12

Phenols 0.79%

(E)-isoeugenol	0.79
----------------	------


Raw Material: Roots

Production Method: Hydro steam distillation

Date of Analysis: 11/22/2019

Other 14.18%

unknown	14.18
---------	-------

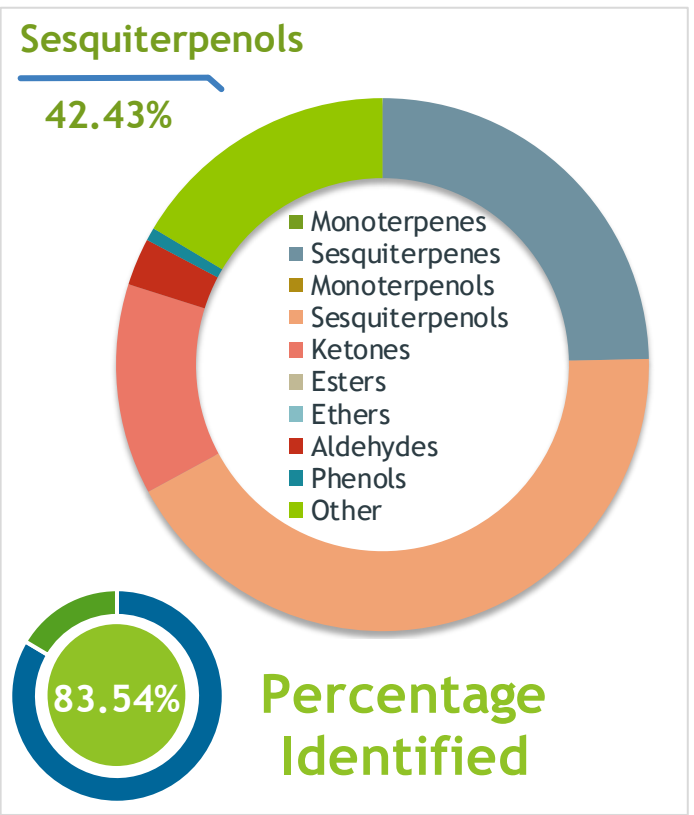
Client  **Source** 

Ruh Khus (*Vetiveria zizanioides*)
IN-58696

Sample Ruh Khus (*Vetiveria zizanioides*)
Batch #:..... | IN-58696
Type:..... | Essential Oil
CAS Number:... | 84238-29-9
Nature's Gift

Client  **Website** 

Primary 11.43% | Khusimol
10.78% | Isovalencenol
6.14% | alpha-Vetivone



Result 

Conclusion No adulterants, Diluents, or contaminants were detected via this method. This oil meets the expected profile for genuine Essential Oil of Ruh Khus (*Vetiveria zizanioides*)

Internal Number: | EVS-1889


Essential Validation Services
747 SW 2nd Ave IMB 12 Suite 306
Gainesville, FL 32601
317.361.5044 | <https://essentialvalidationservices.com/>
adam@essentialvalidationservices.com


Monoterpenes	0.00%
Sesquiterpenes	24.66%
Monoterpenols	0.00%
Sesquiterpenols	42.43%
Ketones	12.79%
Esters	0.00%
Ethers	0.00%
Aldehydes	2.87%
Phenols	0.79%
Other	16.46%

ESSENTIAL VALIDATION SERVICES | 747 SW 2ND AVE GAINESVILLE, FLORIDA 32601 | 317-361-5044

Client



Source

Ruh Khus (*Vetiveria zizanioides*)

IN-58696

Total Percentage		83.54%		
Number	RT	Area %	Compound Name	Chemical Family
1	26.70	0.03%	alpha-Cubebene	Sesquiterpene
2	27.28	0.13%	Cyclosativene	Sesquiterpene
3	27.40	0.20%	alpha-Ylangene	Sesquiterpene
4	27.72	0.14%	alpha-Copaene	Sesquiterpene
5	27.78	0.06%	Daucene	Sesquiterpene
6	27.99	0.13%	beta-Elemene	Sesquiterpene
7	28.41	0.04%	beta-Cubebene	Sesquiterpene
8	28.57	0.08%	diepi-alpha-Cedrene	Sesquiterpene
9	28.71	0.22%	alpha-Cedrene	Sesquiterpene
10	28.82	0.18%	alpha-Gurjunene	Sesquiterpene
11	28.96	0.32%	beta-Caryophyllene	Sesquiterpene
12	29.19	0.34%	beta-Cedrene	Sesquiterpene
13	29.50	0.25%	6,9-Guaiadiene	Sesquiterpene
14	29.71	0.62%	Aromadendrene	Sesquiterpene
15	29.86	0.79%	(E)-Isoeugenol	Phenylpropanoid
16	29.93	0.55%	Khusimene	Sesquiterpene
17	30.22	1.26%	beta-Acoradiene	Sesquiterpene
18	30.38	0.48%	gamma-Murolene	Sesquiterpene
19	30.57	2.78%	alpha-Amorphene	Sesquiterpene
20	30.74	1.11%	alpha-Vetispirene	Sesquiterpene
21	30.89	2.90%	beta-Vetispirene	Sesquiterpene
22	30.97	0.73%	gamma-Amorphene	Sesquiterpene
23	31.01	0.45%	UK Ruh Khus	
24	31.32	2.52%	UK Ruh Khus	
25	31.57	0.16%	gamma-Cadinene	Sesquiterpene
26	31.64	0.37%	UK Ruh Khus	
27	31.76	1.96%	delta-Cadinene	Sesquiterpene
28	31.93	0.39%	gamma-Vetivenene	Sesquiterpene
29	32.16	0.51%	gamma-Calacorene	Sesquiterpene
30	32.33	0.47%	beta-Calacorene	Sesquiterpene
31	32.43	0.92%	Germacrene B	Sesquiterpene
32	32.66	4.78%	beta-Vetivenene	Sesquiterpene
33	32.87	2.68%	beta-Vetivenene isomer I	Sesquiterpene
34	33.12	0.23%	UK Ruh Khus	
35	33.21	0.24%	beta-Vetivenene isomer II	Sesquiterpene

ESSENTIAL VALIDATION SERVICES | 747 SW 2ND AVE GAINESVILLE, FLORIDA 32601 | 317-361-5044

Client



Source

Ruh Khus (*Vetiveria zizanioides*)

IN-58696

Number	RT	Area %	Compound Name	Chemical Family
36	33.39	0.43%	UK Ruh Khus	Sesquiterpene
37	33.52	2.41%	UK Ruh Khus	
38	33.68	0.46%	Globulol	Sesquiterpenol
39	33.81	0.18%	Guaiol	Sesquiterpenol
40	33.98	0.63%	Khusimone	Normonoterpene Ketone
41	34.17	0.07%	UK Ruh Khus	
42	34.27	0.17%	UK Ruh Khus	
43	34.41	5.68%	10-epi-gamma-Eudesmol	Sesquiterpenol
44	34.41	Co-Eluting	1-epi-Cubenol	Sesquiterpenol
45	34.71	1.30%	T-Cadinol	Sesquiterpenol
46	35.08	0.21%	T-Muurolol	Sesquiterpenol
47	35.24	5.80%	Valerianol	Sesquiterpenol
48	35.40	1.19%	UK Ruh Khus	
49	35.58	0.95%	Cyclocopacampha-12-ol (epimer A)	Sesquiterpenol
50	35.70	1.00%	epi-Zizanone	Sesquiterpene Ketone
51	35.81	1.05%	Cyclocopacampha-12-ol (epimer B)	Sesquiterpenol
52	36.03	1.16%	UK Ruh Khus	
53	36.24	0.44%	Zizanal	Sesquiterpene Aldehyde
54	36.39	1.75%	UK Ruh Khus	
55	36.50	0.12%	Junipercamphor	Sesquiterpene Ketone
56	36.80	0.96%	cis-beta-Santalol	Sesquiterpenol
57	37.04	3.63%	Vetiselinenol	Sesquiterpenol
58	37.25	0.44%	Valerenal	Sesquiterpene Aldehyde
59	37.56	11.43%	Khusimol	Sesquiterpenol
60	38.11	0.66%	UK Ruh Khus	
61	38.26	0.28%	UK Ruh Khus	
62	38.66	10.78%	Isovalencenol	Sesquiterpenol
63	38.79	1.99%	(E)-Isovalencenal	Sesquiterpene Aldehyde
64	38.96	0.63%	UK Ruh Khus	
65	39.08	0.30%	Nootkatone	Sesquiterpene Ketone
66	39.34	4.60%	beta-Vetivone	Sesquiterpene Ketone
67	39.62	1.25%	UK Ruh Khus	
68	39.73	0.21%	UK Ruh Khus	
69	39.94	6.14%	alpha-Vetivone	Sesquiterpene Ketone
70	40.20	0.18%	UK Ruh Khus	
71	41.00	0.22%	UK Ruh Khus	

ESSENTIAL VALIDATION SERVICES | 747 SW 2ND AVE GAINESVILLE, FLORIDA 32601 | 317-361-5044