



Rosemary ct Cineole

Rosmarinus officinalis ct cineole

Batch No. TN-59056

Tunisia

Monoterpenes 24.91%

α pinene	10.50
β pinene	4.47
camphene	4.24
meta-cymene	1.76
myrcene	1.47
γ terpinene	0.54
α terpinene	0.39
δ 3 carene	0.37
terpinolene	0.34
α thujene	0.21
α phellandrene	0.17
tricyclene	0.15
sabinene	0.09
(E) β ocimene	0.05
(Z) β ocimene	0.05
para cymenene	0.05
pseudolimonene	0.03
thuja-2,4(10)-diene	0.02
hashishene	0.01

Aldehydes 0.02%

α campholene aldehyde	0.02
nonanal	0.01

Esters 1.28%

bornyl acetate	1.28
----------------	------

Ethers 43.68%

1,8 cineole	43.67
humulene epoxide II	0.01
allo-aromadendrene epoxide	0.01

Monoterpenols 9.87%

borneol	4.98
α terpineol	2.52
terpinen-4-ol	1.04
linalool	0.94
fenchol	0.08
trans-sabinene hydrate	0.07
camphene hydrate	0.06
para cymen 8-ol	0.06
trans-pinocarveol	0.05
(Z) para-menth-2-en-1-ol	0.02
citronellol	0.02
isopulegol	0.02
neo-isopulegol	0.01

Ketones 13.73%

camphor	13.67
verbenone	
octan-3-one	0.06
pinocamphone	
fenchone	
pinocarvone	
mesityl oxide	
piperitone	
pulegone	

Phenols 0.19%

methyl eugenol	0.02
methyl chavicol	0.01

Sesquiterpenes 5.58%

β caryophyllene	3.95
α humulene	0.46
β cadinene	0.34
α copaene	0.32
γ muurolene	0.26
γ cadinene	0.16
α muurolene	0.09
α ylangene	0.09
aromadendrene	0.06
β bisabolene	0.06
6,9 guaiaiene	0.03
α cubebene	0.03
α selinene	0.03
β copaene	0.03
β selinene	0.03
trans cadina-1,4-diene	0.02
trans-calamenene	0.02
α cadinene	0.01

Sesquiterpenols 0.15%

longipinanol	0.15
--------------	------

Other 0.19%

1-octen-3-ol	0.17
(Z) hex-3-en-1-ol	0.02



Raw Material: *Rosmarinus officinalis L. ct cineole*

INCI Name: ROSMARINUS OFFICINALIS FLOWER OIL (Syn : ROSMARINUS OFFICINALIS LEAF OIL)

Production Steam Dist., leaves & flowers

Date of Analysis 6/6/2020

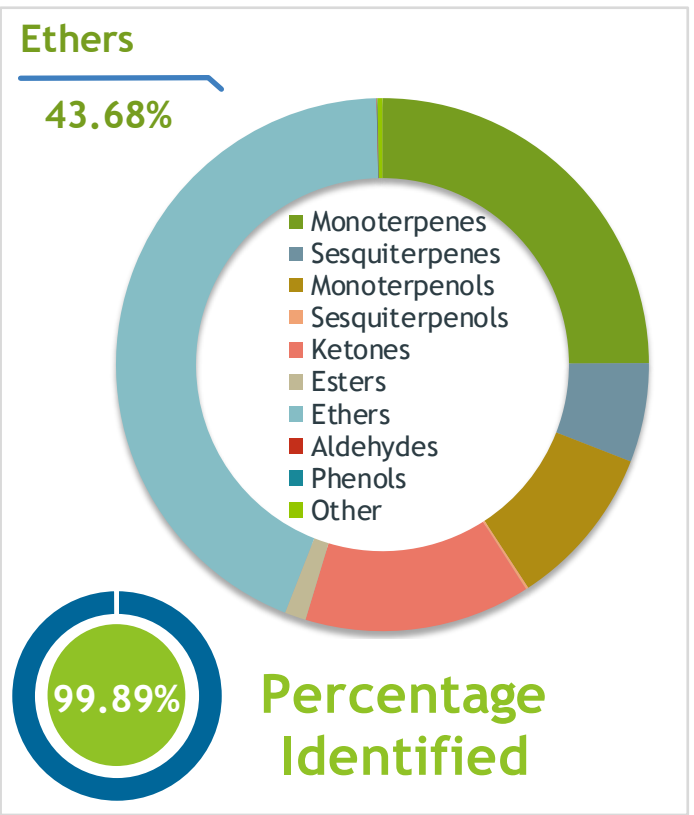
Rosemary (*Rosmarinus officinalis*)
TN-59056

Client  **Source** 

Sample Rosemary (*Rosmarinus officinalis*)
Batch #:..... TN-59056
Type:..... Essential Oil
CAS Number:... 8000-25-7
Nature's Gift

Client  **Website** 

Primary
43.67% | 1,8-Cineole
13.67% | Camphor
10.50% | alpha-Pinene



Result 

Conclusion No adulterants, diluents, or contaminants were detected via this method. This oil meets the expected profile for genuine Essential Oil of Rosemary (*Rosmarinus officinalis*)
Internal Number: | EVS-3715


Essential Validation Services
747 SW 2nd Ave IMB 12 Suite 306
Gainesville, FL 32601
317.361.5044 | <https://essentialvalidationservices.com/>
adam@essentialvalidationservices.com


Monoterpenes	24.91%	24.91%
Sesquiterpenes	6.01%	6.01%
Monoterpenols	9.87%	9.87%
Sesquiterpenols	0.15%	0.15%
Ketones	13.73%	13.73%
Esters	1.29%	1.29%
Ethers	43.68%	43.68%
Aldehydes	0.03%	0.03%
Phenols	0.03%	0.03%
Other	0.30%	0.30%

ESSENTIAL VALIDATION SERVICES | 747 SW 2ND AVE GAINESVILLE, FLORIDA 32601 | 317-361-5044

- Essential Oil testing is performed by using qualitative GC-MS. Method: SOP.T.01 Client Method
- This report may not be published without the consent of Essential Validation Services.
- Chromatograph image may be requested
- This report is valid for 1 year from the analyzed date

Client



Source

Rosemary (*Rosmarinus officinalis*)

TN-59056

Total Percentage		99.89%		
Number	RT	Area %	Compound Name	Chemical Family
1	5.93	0.02%	cis-Hex-3-en-1-ol	Aliphatic Alcohol
2	8.06	0.01%	Hashishene	Monoterpene
3	8.14	0.15%	Tricyclene	Monoterpene
4	8.31	0.21%	alpha-Thujene	Monoterpene
5	8.58	10.50%	alpha-Pinene	Monoterpene
6	9.19	4.24%	Camphene	Monoterpene
7	9.36	0.02%	Thuja-2,4(10)-diene	Monoterpene
8	10.16	0.09%	Sabinene	Monoterpene
9	10.33	4.47%	beta-Pinene	Monoterpene
10	10.52	0.17%	1-Octen-3-ol	Aliphatic Alcohol
11	10.72	0.06%	Octan-3-one	Aliphatic Ketone
12	10.91	1.47%	Myrcene	Monoterpene
13	11.46	0.03%	Pseudolimonene	Monoterpene
14	11.57	0.17%	alpha-Phellandrene	Monoterpene
15	11.68	0.37%	delta-3-Carene	Monoterpene
16	12.05	0.39%	alpha-Terpinene	Monoterpene
17	12.39	1.76%	meta-Cymene	Monoterpene
18	12.77	43.67%	1,8-Cineole	Monoterpene Ether
19	12.97	0.05%	(Z)-beta-Ocimene	Monoterpene
20	13.43	0.05%	(E)-beta-Ocimene	Monoterpene
21	13.92	0.54%	gamma-Terpinene	Monoterpene
22	14.43	0.07%	trans-Sabinene hydrate	Monoterpenol
23	15.16	0.34%	Terpinolene	Monoterpene
24	15.35	0.05%	para-Cymenene	Monoterpene
25	15.87	0.94%	Linalool	Monoterpenol
26	16.09	0.01%	Nonanal	Aliphatic Aldehyde
27	16.67	0.08%	Fenchol	Monoterpenol
28	16.94	0.02%	cis-para-Menth-2-en-1-ol	Monoterpenol
29	17.02	0.02%	alpha-Campholene aldehyde	Monoterpene Aldehyde
30	17.65	0.05%	trans-Pinocarveol	Monoterpenol
31	17.93	13.67%	Camphor	Monoterpene Ketone
32	18.03	0.01%	neo-Isopulegol	Monoterpenol
33	18.27	0.06%	Camphene hydrate	Monoterpenol
34	18.47	0.02%	Isopulegol	Monoterpenol
35	19.10	4.98%	Borneol	Monoterpenol

ESSENTIAL VALIDATION SERVICES | 747 SW 2ND AVE GAINESVILLE, FLORIDA 32601 | 317-361-5044

- Essential Oil testing is performed by using qualitative GC-MS. Method: SOP.T.01 Client Method
 - This report may not be published without the consent of Essential Validation Services.
 - Chromatograph image may be requested
 - This report is valid for 1 year from the analyzed date

Client



Source

Rosemary (*Rosmarinus officinalis*)

TN-59056

Number	RT	Area %	Compound Name	Chemical Family
36	19.508	1.04%	Terpinen-4-ol	Monoterpenol
37	19.83	0.06%	para-Cymen-8-ol	Monoterpenol
38	20.20	2.52%	alpha-Terpineol	Monoterpenol
39	20.33	0.01%	Methyl chavicol	Phenylpropanoid
40	21.74	0.02%	Citronellol	Monoterpenol
41	24.24	1.28%	Bornyl acetate	Monoterpene Ester
42	27.02	0.03%	alpha-Cubebene	Sesquiterpene
43	27.95	0.09%	alpha-Ylangene	Sesquiterpene
44	28.22	0.32%	alpha-Copaene	Sesquiterpene
45	29.31	0.02%	Methyl eugenol	Phenylpropanoid
46	30.04	3.95%	beta-Caryophyllene	Sesquiterpene
47	30.47	0.03%	beta-Copaene	Sesquiterpene
48	30.81	0.06%	Aromadendrene	Sesquiterpene
49	31.49	0.46%	alpha-Humulene	Sesquiterpene
50	32.23	0.02%	trans-Cadina-1(6),4-diene	Sesquiterpene
51	32.35	0.26%	gamma-Murolene	Sesquiterpene
52	32.52	0.03%	6,9-Guaiadiene	Sesquiterpene
53	32.85	0.03%	beta-Selinene	Sesquiterpene
54	33.17	0.03%	alpha-Selinene	Sesquiterpene
55	33.32	0.09%	alpha-Murolene	Sesquiterpene
56	33.74	0.06%	beta-Bisabolene	Sesquiterpene
57	33.87	0.16%	gamma-Cadinene	Sesquiterpene
58	34.11	0.34%	beta-Cadinene	Sesquiterpene
59	34.20	0.02%	trans-Calamenene	Sesquiterpene
60	34.63	0.02%	trans-Cadina-1,4-diene	Sesquiterpene
61	34.80	0.01%	alpha-Cadinene	Sesquiterpene
62	36.47	0.15%	Longipinanol	Sesquiterpenol
63	37.54	0.01%	Humulene epoxide II	Sesquiterpene Ether
64	39.29	0.01%	allo-Aromadendrene epoxide	Sesquiterpene Ester

ESSENTIAL VALIDATION SERVICES | 747 SW 2ND AVE GAINESVILLE, FLORIDA 32601 | 317-361-5044

- Essential Oil testing is performed by using qualitative GC-MS. Method: SOP.T.01 Client Method
 - This report may not be published without the consent of Essential Validation Services.
 - Chromatograph image may be requested
 - This report is valid for 1 year from the analyzed date