



316 Old Hickory Blvd East, Madison, TN 37115

tel (615)612-4270 fax (615)860-9171

sold@naturesgift.com

Healing Body, Mind and Spirit with Pure Essential Oils

Since 1995

www.naturesgift.com

Rosemary ct Cineole

Rosmarinus officinalis ct cineole

Batch No. TN-58938

Tunisia

Monoterpenes 25.38%

α pinene	10.85
sabinene	6.53
camphene	3.40
β pinene	1.19
para cymene	0.79
γ terpinene	0.79
terpinolene	0.46
α terpinene	0.40
δ 3 carene	0.35
α thujene	0.33
tricyclene	0.11
α phellandrene	0.08
(Z) β ocimene	0.06
(E) β ocimene	0.04

Monoterpenols 6.88%

borneol	3.53
α terpineol	1.76
linalol	0.68
terpinen-4-ol	0.68
octen-1-ol-3	0.14
trans-sabinene hydrate	0.06
trans-pinocarveol	0.03

Sesquiterpenes 4.58%

β caryophyllene	3.57
α humulene	0.32
α muurolene	0.22
β cubebene	0.21
γ muurolene	0.17
α ylangene	0.05
α cubebene	0.04

Ethers 48.61%

1,8 cineole + limonene	48.49
caryophyllene oxyde	0.12

Esters 0.97%

bornyl acetate	0.97
----------------	------

Ketones 12.73%


camphor	12.69
3-octanone	0.04

Raw Material: *Rosmarinus officinalis L. ct cineole*

INCI Name: ROSMARINUS OFFICINALIS FLOWER OIL (Syn : ROSMARINUS OFFICINALIS LEAF OIL)

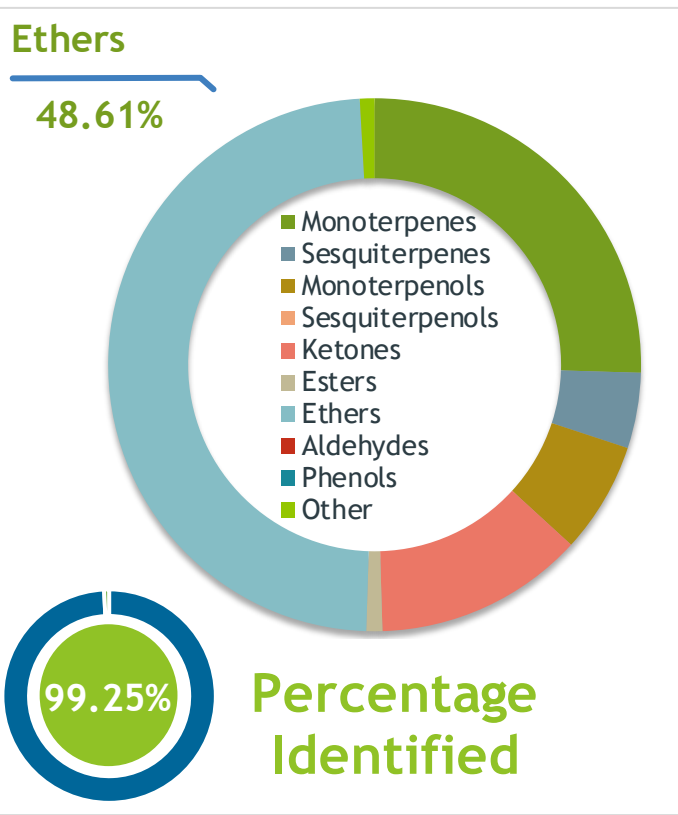
Production Steam Dist., leaves & flowers

Date of Analysis: 6/26/2019

Client  **Source** 

Rosemary (Cineole) (*Rosmarinus officinalis*)
TN-58938

Sample Rosemary (Cineole) (*Rosmarinus officinalis*)
Batch #:..... TN-58938 Type:.....
Essential Oil
CAS Number:... 8000-25-7
Nature's Gift



Client  **Website** 

Primary

- 48.49% 1,8-Cineole (Co-Eluting)
- 12.69% Camphor
- 10.85% alpha-Pinene

Result 

Conclusion No adulterants, Diluents, or contaminants were detected via this method. This oil meets the expected profile for genuine Essential Oil of Rosemary (Cineole) (*Rosmarinus officinalis*)

Internal Number: | EVS-3052


Essential Validation Services
747 SW 2nd Ave IMB 12 Suite 306
Gainesville, FL 32601
317.361.5044 |
<https://essentialvalidationservices.com/>
adam@essentialvalidationservices.com


Monoterpenes	25.48%	25.48%
Sesquiterpenes	4.58%	4.58%
Monoterpenols	6.74%	6.74%
Sesquiterpenols	0.00%	0.00%
Ketones	12.73%	12.73%
Esters	0.97%	0.97%
Ethers	48.61%	48.61%
Aldehydes	0.00%	0.00%
Phenols	0.00%	0.00%
Other	0.89%	0.89%

ESSENTIAL VALIDATION SERVICES | 747 SW 2ND AVE GAINESVILLE, FLORIDA 32601 | 317-361-5044

Client



Source



Rosemary (Cineole) (*Rosmarinus officinalis*)
TN-58938

Total Percentage		99.25%			
Number	RT	Area %	Compound Name	RI	Chemical Family
1	11.90	0.11%	Tricyclene	923.00	Monoterpene
2	12.14	0.33%	alpha-Thujene	927.80	Monoterpene
3	12.41	10.85%	alpha-Pinene	936.10	Monoterpene
4	13.00	3.40%	Camphene	950.30	Monoterpene
5	14.18	6.53%	Sabinene	973.00	Monoterpene
6	14.34	0.14%	1-Octen-3-ol	980.00	Aliphatic Alcohol
7	14.60	0.04%	3-Octanone	981.00	Aliphatic Ketone
8	14.79	1.19%	beta-Pinene	974.00	Monoterpene
9	15.33	0.18%	alpha-Phellandrene	1002.00	Monoterpene
10	15.58	0.35%	delta-3-Carene	1008.00	Monoterpene
11	15.85	0.40%	alpha-Terpinene	1014.00	Monoterpene
12	16.21	0.79%	para-Cymene	1024.30	Monoterpene
13	16.54	48.49%	1,8-Cineole	1031.80	Monoterpene Ether
14	16.55	Co-Eluting	Limonene	1029.50	Monoterpene
15	16.73	0.06%	(Z)-beta-Ocimene	1037.80	Monoterpene
16	17.17	0.04%	(E)-beta-Ocimene	1047.70	Monoterpene
17	17.60	0.79%	gamma-Terpinene	1054.00	Monoterpene
18	17.93	0.06%	trans-Sabinene hydrate	1072.00	Monoterpenol
19	18.81	0.46%	Terpinolene	1092.10	Monoterpene
20	19.24	0.68%	Linalool	1099.00	Monoterpenol
21	20.86	0.03%	trans-Pinocarveol	1143.75	Monoterpenol
22	21.06	12.69%	Camphor	1147.55	Monoterpene Ketone
23	21.87	3.53%	Borneol	1168.71	Monoterpenol
24	22.28	0.68%	Terpinen-4-ol	1180.57	Monoterpenol
25	22.78	1.76%	alpha-Terpineol	1191.71	Monoterpenol
26	26.20	0.97%	Bornyl acetate	1288.29	Monoterpene Ester
27	28.44	0.04%	alpha-Cubebene	1355.71	Sesquiterpene
28	29.20	0.05%	alpha-Ylangene	1371.33	Sesquiterpene
29	29.36	0.21%	beta-Cubebene	1390.50	Sesquiterpene
30	30.82	3.57%	beta-Caryophyllene	1427.14	Sesquiterpene
31	31.89	0.32%	alpha-Humulene	1461.43	Sesquiterpene
32	32.54	0.17%	gamma-Muurolene	1478.86	Sesquiterpene
33	33.96	0.22%	alpha-Muurolene	1500.25	Sesquiterpene
34	35.82	0.12%	Caryophyllene oxide	1594.86	Sesquiterpene Ether

ESSENTIAL VALIDATION SERVICES | 747 SW 2ND AVE GAINESVILLE, FLORIDA 32601 | 317-361-5044

