

Sample Information

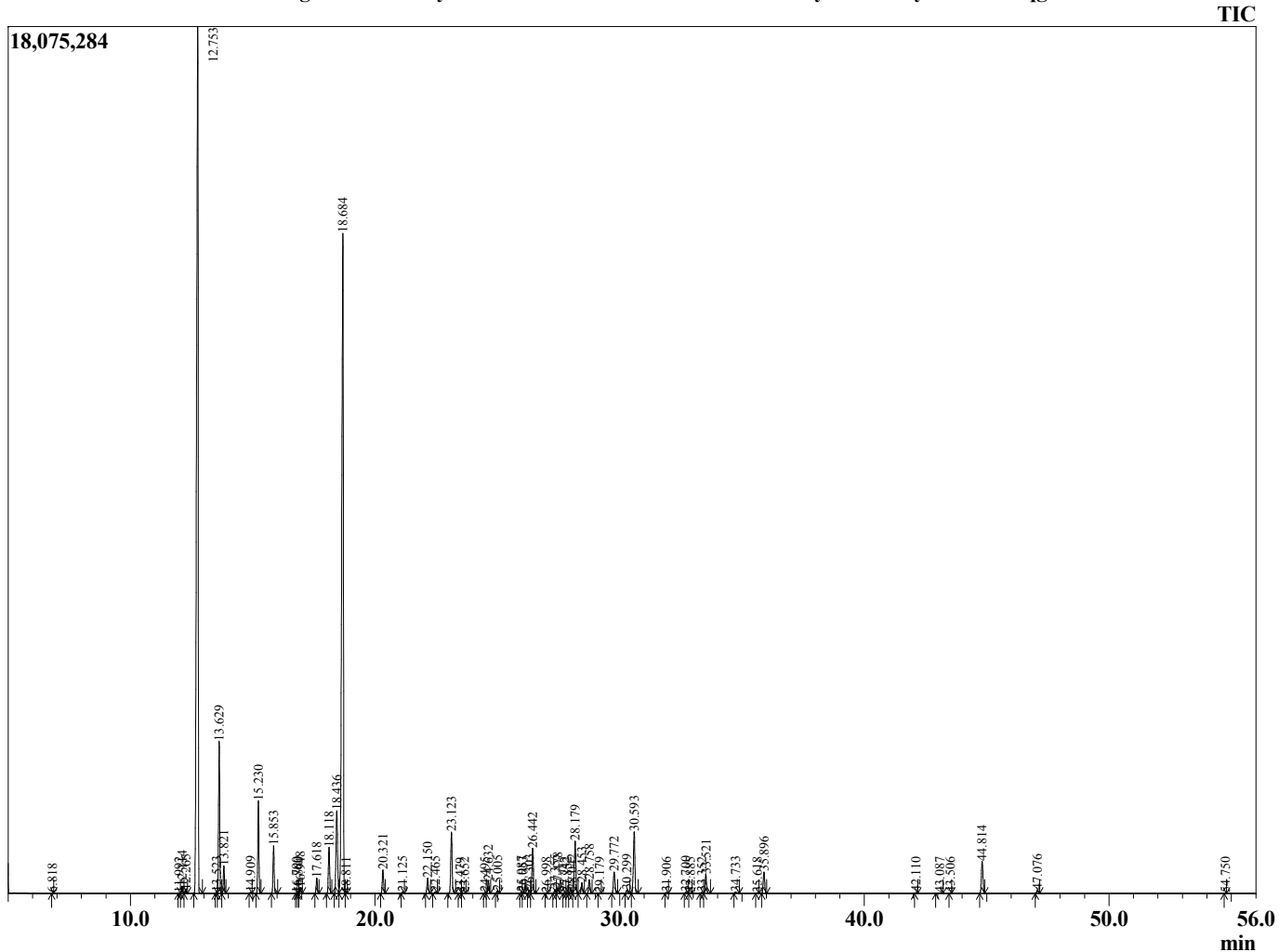
Analyzed by : Dr. Robert S. Pappas
 Analyzed : 8/18/2014 1:49:57 PM
 Sample Type : Essential Oil
 Sample Name : Rosemary
 Sample ID : 14045001
 Injection Volume : 0.10
 Data File : C:\GCMSsolution\Data\EOU\Rosemary\Rosemary 14045001.qgd



Peak Report TIC

R.Time	Name	Area%
6.818	Mesityl oxide	0.02
11.992	Artemisia triene	0.01
12.114	Tricyclene	0.20
12.265	Thujene <alpha->	0.09
12.753	Pinene <alpha->	37.73
13.523	Fenchene <alpha->	0.04
13.629	Camphene	4.61
13.821	Thuja-2,4(10)diene	0.82
14.909	Sabinene	0.04
15.230	Pinene <beta->	2.94
15.853	Myrcene	1.52
16.790	Limonene<psi>	0.01
16.860	1,4-Cyclohexadiene, 3-ethenyl-1,2-dimethyl-	0.02
16.948	Phellandrene <alpha->	0.20
17.618	Terpinene <alpha->	0.50
18.118	Cymene <para->	1.62
18.436	Limonene	3.45
18.684	Cineole <1,8>	29.30
18.811	Ocimene <Z-beta>	0.01
20.321	Terpinene <gamma>	0.81
21.125	Sabinene-hydrate<Z>	0.05
22.150	Terpinolene	0.54
22.465	Cymenene <para->	0.07
23.123	Linalool	2.32
23.479	Hexenyl propanoate<2E.>	0.01
23.652	Unidentified	0.01
24.495	Fenchol <endo>	0.03
24.632	Chrysanthenone	0.47
25.005	Campholenal <alpha>	0.11
25.987	Pinocarveol <trans(-)>	0.06
26.053	Verbenol<Z>	0.06
26.303	Verbenol	0.12
26.442	Camphor	1.74
26.998	Camphene hydrate	0.01
27.355	Pinocamphone <trans>	0.15
27.478	Pinocarvone	0.19
27.742	Unidentified	0.03
27.852	Camphene<acetoxy-exo>	0.01
28.042	Terpineol <delta>	0.12
28.179	Borneol	2.11
28.453	Isopinocamphone	0.40
28.758	Terpinen-4-ol	0.53
29.179	Cymen-8-ol<para>	0.01
29.772	Terpineol <alpha>	0.94
30.299	Myrtenol<homo>	0.13
30.593	Verbenone	2.49
31.906	Citronellol	0.04
32.700	Neral	0.04
32.885	Rosemary<93,1245>	0.02
33.352	Rosemary<93,1245>	0.03
33.521	Geraniol	0.71
34.733	Geranial	0.07
35.618	Verbenyl acetate <Z>	0.02
35.896	Bornyl acetate	0.85
42.110	Geranyl acetate	0.03
43.087	Vinyl guaiacol isomer	0.05
43.506	Eugenol<methyl>	0.01
44.814	Caryophyllene <trans>	1.34
47.076	Humulene <alpha->	0.13
54.750	Caryophyllene oxide.	0.01
		100.00

Chromatogram Rosemary C:\GCMSsolution\Data\EOU\Rosemary\Rosemary 14045001.qgd



Comments:

Typical Ranges of Main Components: