



Rhododendron (Rhododendron anthopogon)

Sample:



Laboratory:



Client: | Nature's Gift
 Sample: | Rhododendron
 Latin Name: | Rhododendron anthopogon
 Batch #: | NP-58809
 CAS Number: | N/A
 Type: | Essential Oil

Essential Validation Services
<https://essentialvalidationservices.com/>
 adam@essentialvalidationservices.com
 747 SW 2nd Ave, Suite 306 IMB 12
 Gainesville, FL 32601
 317-361-5044

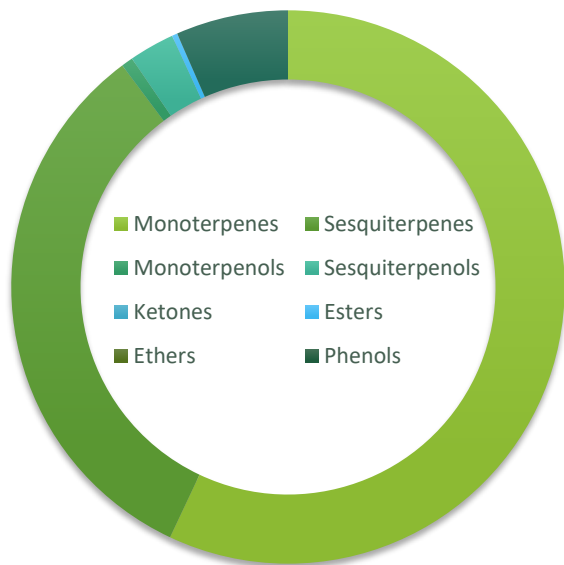
Top 5 Compounds:

Compounds	%
alpha-Pinene	25.46%
beta-Pinene	11.18%
delta-Cadinene	10.56%
Limonene	10.27%
beta-Caryophyllene	4.17%

Conclusion:



No adulterants, diluents, or contaminants were detected via this method. This oil meets the expected profile for genuine essential oil of Rhododendron (Rhododendron anthopogon).



Chemical Families

Monoterpenes	Sesquiterpenes
57.01%	32.77%
Monoterpenols	Sesquiterpenols
0.68%	2.66%
Ketones	Esters
0.00%	0.32%
Ethers	Aldehydes
0.00%	0.00%
Phenols	Other
0.00%	6.56%

X *Adam Christensen*
 Adam Christensen
 CEO



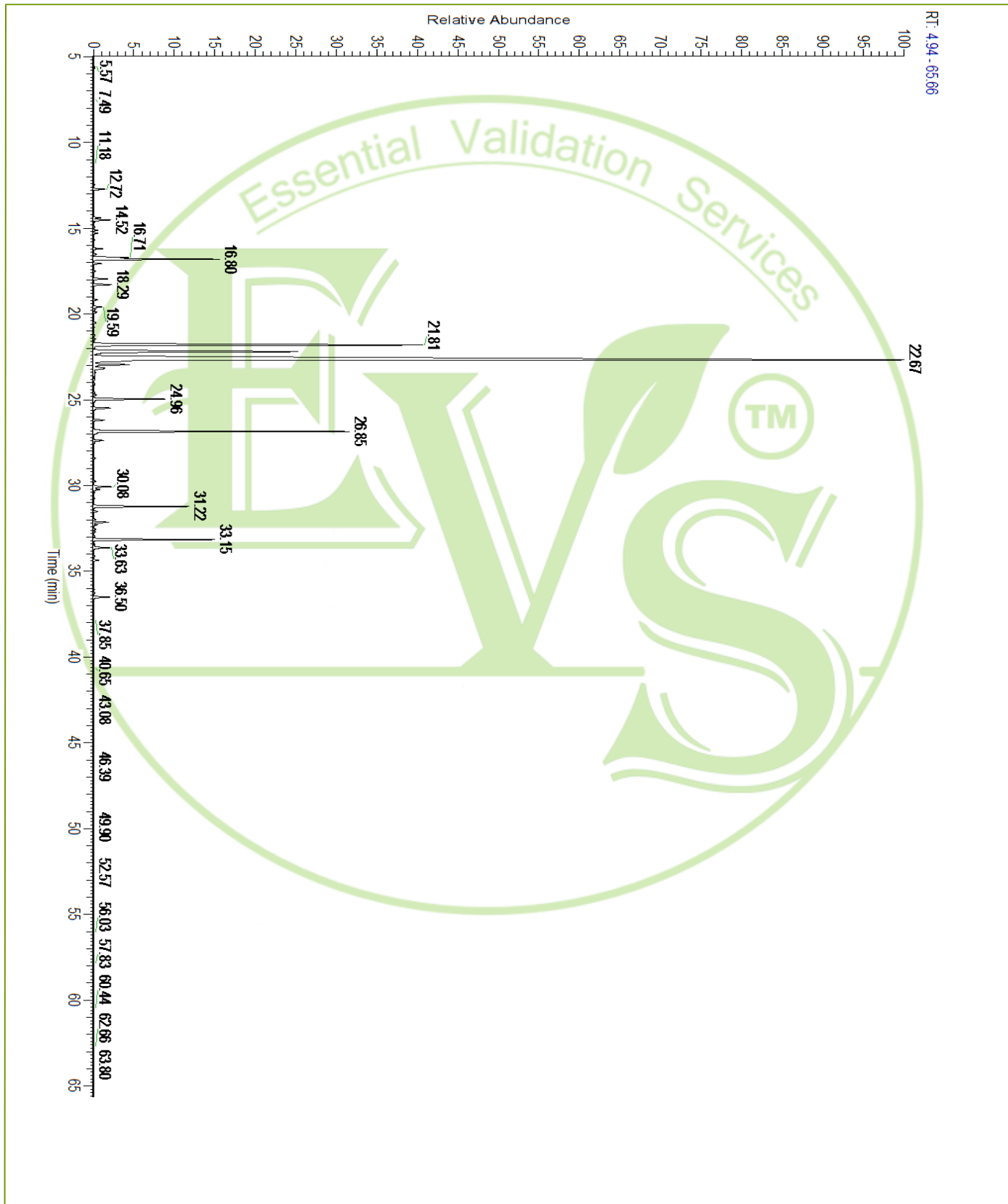


Rhododendron (Rhododendron anthopogon)

Total Percentage		93.44%			
Number	RT	Area %	Compound Name	RI	Chemical Family
1	12.25	0.03%	Tricyclene	923.00	Monoterpene
2	12.47	0.20%	alpha-Thujene	927.80	Monoterpene
3	12.78	25.46%	alpha-Pinene	936.10	Monoterpene
4	13.36	0.28%	alpha-Fenchene	946.00	Monoterpene
5	14.43	0.09%	Sabinene	973.00	Monoterpene
6	14.56	11.18%	beta-Pinene	974.00	Monoterpene
7	15.14	1.52%	Myrcene	989.20	Monoterpene
8	15.70	0.04%	alpha-Phellandrene	1002.00	Monoterpene
9	15.95	0.01%	delta-3-Carene	1008.00	Monoterpene
10	16.21	0.19%	alpha-Terpinene	1014.00	Monoterpene
11	16.54	0.35%	para-Cymene	1024.30	Monoterpene
12	16.74	10.27%	Limonene	1029.50	Monoterpene
13	17.10	3.64%	(Z)-beta-Ocimene	1037.80	Monoterpene
14	17.52	0.76%	(E)-beta-Ocimene	1047.70	Monoterpene
15	17.98	2.61%	gamma-Terpinene	1054.00	Monoterpene
16	19.19	0.38%	Terpinolene	1092.10	Monoterpene
17	19.60	0.26%	Linalool	1099.00	Monoterpenol
18	22.67	0.17%	Terpinen-4-ol	1180.57	Monoterpenol
19	23.17	0.25%	alpha-Terpineol	1191.71	Monoterpenol
20	26.60	0.17%	Bornyl acetate	1288.29	Monoterpene Ester
21	28.40	0.04%	delta-Elemene	1335.83	Sesquiterpene
22	28.75	0.15%	Citronellyl acetate	1357.83	Monoterpene Ester
23	28.82	0.51%	alpha-Cubebene	1355.71	Sesquiterpene
24	29.60	0.15%	alpha-Ylangene	1371.33	Sesquiterpene
25	29.75	1.13%	alpha-Copaene	1379.00	Sesquiterpene
26	30.08	0.48%	beta-Bourbonene	1388.70	Sesquiterpene
27	30.23	0.43%	beta-Elemene	1389.20	Sesquiterpene
28	30.38	0.04%	beta-Cubebene	1390.50	Sesquiterpene
29	30.60	0.10%	Sesquithujene	1405.00	Sesquiterpene
30	30.89	0.28%	alpha-Gurjunene	1412.00	Sesquiterpene
31	31.23	4.17%	beta-Caryophyllene	1427.14	Sesquiterpene
32	31.63	0.18%	beta-Gurjunene	1433.00	Sesquiterpene
33	31.84	0.56%	Aromadendrene	1449.80	Sesquiterpene
34	32.16	1.12%	(E)-beta-Farnesene	1456.29	Sesquiterpene
35	32.30	0.56%	alpha-Humulene	1461.43	Sesquiterpene
36	32.54	1.06%	Allo-Aromadendrene	1471.00	Sesquiterpene
37	32.96	2.60%	gamma-Muurolene	1478.86	Sesquiterpene
38	33.15	0.19%	Germacrene D	1484.71	Sesquiterpene
39	33.33	1.08%	beta-Selinene	1487.57	Sesquiterpene
40	33.61	1.98%	alpha-Selinene	1492.50	Sesquiterpene



Rhododendron (Rhododendron anthopogon)



ESSENTIAL VALIDATION SERVICES | 747 SW 2ND AVE GAINESVILLE, FLORIDA 32601 | 317-361-5044