



316 Old Hickory Blvd East, Madison, TN 37115

tel (615)612-4270 fax (615)860-9171

sold@naturesgift.com

Balancing Body, Mind and Spirit with Pure Essential Oils

Since 1995

www.naturesgift.com

## Ravintsara Cinnamomum camphora

Batch No. MA-59046

Madagascar

### Monoterpenes 28.25%

sabinene	13.59
$\alpha$ pinene	4.93
$\beta$ pinene	3.90
myrcene	1.53
para cymene	1.42
$\alpha$ thujene	0.97
$\gamma$ terpinene	0.78
$\alpha$ terpinene	0.40
terpinolene	0.24
(E) $\beta$ ocimene	0.21
camphene	0.20
$\alpha$ phellandrene	0.04
(Z) $\beta$ ocimene	0.04
alloocimene	

### Monoterpenols 13.64%

$\alpha$ terpineol	8.72
terpinen-4-ol	2.90
$\delta$ terpineol	0.90
trans sabinene hydrate	0.39
cis-sabinene hydrate	0.25
cis-para-menth-2-en-1-ol	0.11
nerol	0.09
trans-para-menth-2-en-1-ol	0.08
(Z) ascaridol glycol	0.06
trans-piperitol	0.04
(E) ascaridol glycol	0.04
para-cymen-8-ol	0.03
trans-pinocarveol	0.02
citronellol	0.01

### Sesquiterpenes 2.81%

$\alpha$ humulene	0.89
cis-caryophyllene	0.82
$\beta$ chamigrene	0.28
$\gamma$ muurolene	0.20
$\beta$ selinene	0.18
$\beta$ elemene	0.12
$\delta$ elemene	0.10
$\gamma$ elemene	0.08
$\gamma$ gurjunene	0.06
aromadendrene	0.02
$\beta$ bourbonene	0.02
$\beta$ cadinene	0.02
6,9 guaiadiene	0.01
$\alpha$ ylangene	0.01

### Ethers 54.82%

1,8 cineole	54.76
humulene epoxide II	0.06

### Other 0.03%

safrole	0.02
(Z) hex-3-en-1-ol	0.01

### Sesquiterpenols 0.21%

spathulenol	0.12
isospathulenol	0.06
viridiflorol	0.02
pogostol	0.01

### Ketones 0.03%

6-methyl-5-hepten-2-one	0.01
cryptone	0.02

Raw Material: Ravintsara

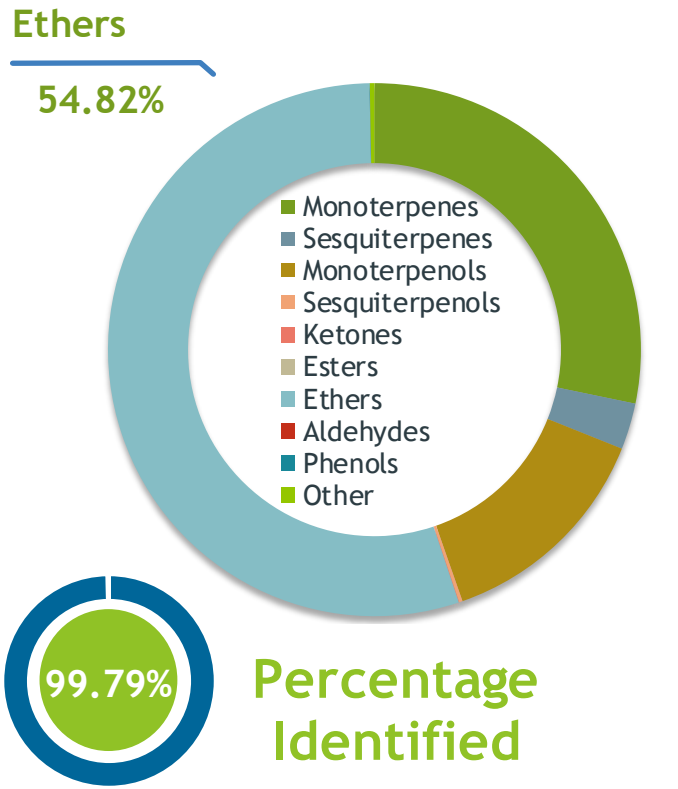
INCI Name: Cinnamomum camphora

Production Method: Steam Dist., Leaves

Client	 Nature's Gift	Source	
--------	---	--------	--

Ravintsara (*Cinnamomum camphora*)  
MA-59046

Sample	Ravintsara ( <i>Cinnamomum camphora</i> )	
	Batch #:.....	MA-59046
	Type:.....	Essential Oil
	CAS Number:...	8008-51-3
	Nature's Gift	



Client	 Nature's Gift	Website	
--------	--	---------	---

Primary	<u>54.76%</u>   <u>1,8-Cineole</u> <u>13.59%</u>   <u>Sabinene</u> <u>8.72%</u>   <u>alpha-Terpineol</u>
---------	--

Result	
--------	---

Conclusion	<p>No adulterants, diluents, or contaminants were detected via this method. This oil meets the expected profile for genuine Essential Oil of Ravintsara (<i>Cinnamomum camphora</i>)</p> <p style="text-align: right;">Internal Number:   EVS-3710</p>
------------	--



Essential Validation Services

747 SW 2nd Ave IMB 12 Suite 306  
Gainesville, FL 32601

317.361.5044 | <https://essentialvalidationservices.com/>  
adam@essentialvalidationservices.com



Monoterpenes	28.25%	28.25%
Sesquiterpenes	2.81%	2.81%
Monoterpenols	13.58%	13.58%
Sesquiterpenols	0.21%	0.21%
Ketones	0.03%	0.03%
Esters	0.00%	0.00%
Ethers	54.82%	54.82%
Aldehydes	0.00%	0.00%
Phenols	0.02%	0.02%
Other	0.28%	0.28%

ESSENTIAL VALIDATION SERVICES | 747 SW 2<sup>ND</sup> AVE GAINESVILLE, FLORIDA 32601 | 317-361-5044

- Essential Oil testing is performed by using qualitative GC-MS. Method: SOP.T.01 Client Method  
 - This report may not be published without the consent of Essential Validation Services.  
 - Chromatograph image may be requested  
 - This report is valid for 1 year from the analyzed date

Client



Source

Ravintsara (*Cinnamomum camphora*)

MA-59046

Total Percentage		99.79%		
Number	RT	Area %	Compound Name	Chemical Family
1	5.93	0.01%	cis-Hex-3-en-1-ol	Aliphatic Alcohol
2	8.31	0.97%	alpha-Thujene	Monoterpene
3	8.57	4.93%	alpha-Pinene	Monoterpene
4	9.19	0.20%	Camphene	Monoterpene
5	10.18	13.59%	Sabinene	Monoterpene
6	10.33	3.90%	beta-Pinene	Monoterpene
7	10.70	0.01%	6-Methyl-5-hepten-2-one	Aliphatic Ketone
8	10.91	1.53%	Myrcene	Monoterpene
9	11.57	0.04%	alpha-Phellandrene	Monoterpene
10	12.05	0.40%	alpha-Terpinene	Monoterpene
11	12.40	1.42%	para-Cymene	Monoterpene
12	12.79	54.76%	1,8-Cineole	Monoterpene Ether
13	12.98	0.04%	(Z)-beta-Ocimene	Monoterpene
14	13.44	0.21%	(E)-beta-Ocimene	Monoterpene
15	13.92	0.78%	gamma-Terpinene	Monoterpene
16	14.43	0.39%	trans-Sabinene hydrate	Monoterpenol
17	15.16	0.24%	Terpinolene	Monoterpene
18	15.83	0.25%	cis-Sabinene hydrate	Monoterpenol
19	16.92	0.11%	cis-para-Menth-2-en-1-ol	Monoterpenol
20	17.64	0.02%	trans-Pinocarveol	Monoterpenol
21	17.75	0.08%	trans-para-Menth-2-en-1-ol	Monoterpenol
22	19.04	0.90%	delta-Terpineol	Monoterpenol
23	19.52	2.90%	Terpinen-4-ol	Monoterpenol
24	19.74	0.02%	Cryptone	Monoterpene Ketone
25	19.83	0.03%	para-Cymen-8-ol	Monoterpenol
26	20.24	8.72%	alpha-Terpineol	Monoterpenol
27	20.86	0.04%	trans-Piperitol	Monoterpenol
28	21.60	0.09%	Nerol	Monoterpenol
29	21.75	0.01%	Citronellol	Monoterpenol
30	23.75	0.06%	cis-Ascaridol glycol	Monoterpenol
31	24.42	0.02%	Safrole	Phenylpropanoid
32	24.54	0.04%	trans-Ascaridol glycol	Monoterpenol
33	26.36	0.10%	delta-Elemene	Sesquiterpene
34	27.95	0.01%	alpha-Ylangene	Sesquiterpene
35	28.54	0.02%	beta-Bourbonene	Sesquiterpene

ESSENTIAL VALIDATION SERVICES | 747 SW 2<sup>ND</sup> AVE GAINESVILLE, FLORIDA 32601 | 317-361-5044

- Essential Oil testing is performed by using qualitative GC-MS. Method: SOP.T.01 Client Method  
 - This report may not be published without the consent of Essential Validation Services.  
 - Chromatograph image may be requested  
 - This report is valid for 1 year from the analyzed date

