



316 Old Hickory Blvd East, Madison, TN 37115

tel (615)612-4270 fax (615)860-9171

sold@naturesgift.com

Balancing Body, Mind and Spirit with Pure Essential Oils

Since 1995

www.naturesgift.com

## Ravintsara Cinnamomum camphora

Batch No. MA-59027

Madagascar

Monoterpenes	25.4%
sabinene	13.88
$\alpha$ pinene	4.28
$\beta$ pinene	3.18
para cymene	1.32
myrcene	1.24
$\alpha$ thujene	0.70
$\gamma$ terpinene	0.25
camphene	0.15
trans $\beta$ ocimene	0.13
$\alpha$ terpinene	0.10
isoterpinolene	0.10
cis $\beta$ ocimene	0.03
$\alpha$ phellandrene	0.02
tricyclene	0.01
alloocimene	0.01

Monoterpenols	11.54%
$\alpha$ terpineol	7.76
terpinen-4-ol	2.17
$\delta$ terpineol	0.73
cis-sabinene hydrate	0.36
trans sabinene hydrate	0.23
cis-para-menth-2-en-1-ol	0.10
trans-para-menth-2-en-1-ol	0.06
nerol	0.06
trans-piperitol	0.03
trans pinocarveol	0.02
para-cymen-8-ol	0.02

Sesquiterpenes	1.15%
$\alpha$ humulene	0.42
$\beta$ caryophyllene	0.26
$\beta$ selinene	0.12
$\alpha$ selinene	0.10
Germacrene D	0.07
$\beta$ elemene	0.06
$\gamma$ elemene	0.03
viridiflorene	0.03
$\delta$ elemene	0.02
$\delta$ cadinene	0.01
$\beta$ bourbonene	0.01
aromadendrene	0.01
$\gamma$ amorphene	0.01

Aldehydes	0.01%
neral	0.01

Ketones	0.03%
6-methyl-5-hepten-2-one	0.01
cryptone	0.02

Sesquiterpenols	0.06%
spathulenol	0.03
guaiol	0.01
isospathulenol	0.02

Ethers	61.35%
1,8 cineole	61.28
caryophyllene oxide	0.04
humulene epoxide	0.03

Other	0.01%
(Z) hex-3-en-1-ol	0.01

Phenols	0.02%
safrole	0.02

Raw Material: Ravintsara

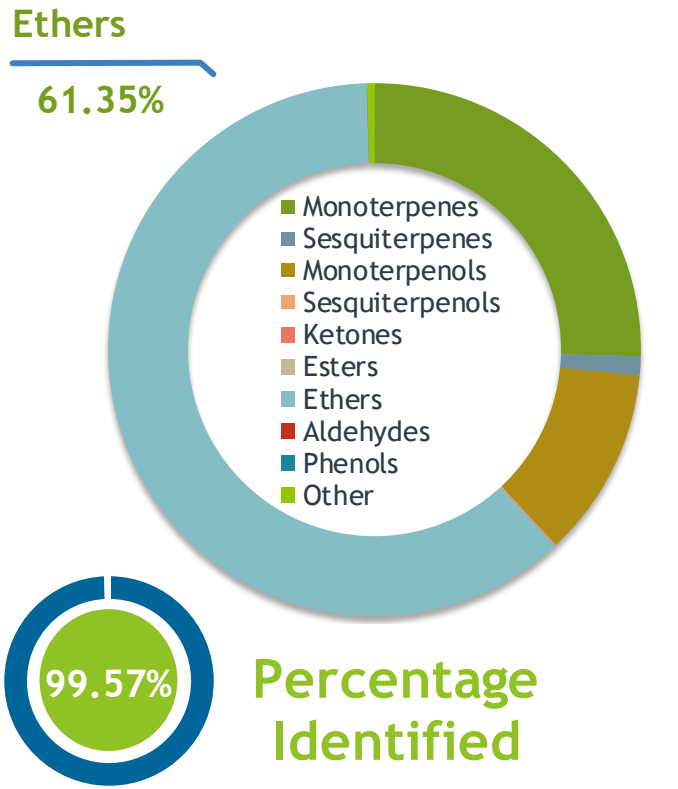
INCI Name: Cinnamomum camphora

Production Method: Steam Dist., Leaves

Client	 Nature's Gift	Source	
--------	---	--------	--

Ravintsara (*Cinnamomum camphora*)  
MA-59027

Sample	Ravintsara ( <i>Cinnamomum camphora</i> )	
	Batch #:.....	MA-59027
	Type:.....	Essential Oil
	CAS Number:...	8008-51-3
	Nature's Gift	



Client	 Nature's Gift	Website	
--------	--	---------	---

Primary	<b>61.28%</b>   <u>1,8-Cineole</u> <b>13.88%</b>   <u>Sabinene</u> <b>7.76%</b>   <u>alpha-Terpineol</u>
---------	--

Result	
--------	---

Conclusion	<p>No adulterants, Diluents, or contaminants were detected via this method. This oil meets the expected profile for genuine Essential Oil of Ravintsara (<i>Cinnamomum camphora</i>)</p> <p style="text-align: right;">Internal Number:   EVS-3620</p>
------------	--



**Essential Validation Services**

747 SW 2nd Ave IMB 12 Suite 306  
Gainesville, FL 32601

317.361.5044 | <https://essentialvalidationservices.com/>  
adam@essentialvalidationservices.com



Monoterpenes	25.40%	25.40%
Sesquiterpenes	1.15%	1.15%
Monoterpenols	11.54%	11.54%
Sesquiterpenols	0.06%	0.06%
Ketones	0.03%	0.03%
Esters	0.00%	0.00%
Ethers	61.35%	61.35%
Aldehydes	0.01%	0.01%
Phenols	0.02%	0.02%
Other	0.44%	0.44%

ESSENTIAL VALIDATION SERVICES | 747 SW 2ND AVE GAINESVILLE, FLORIDA 32601 | 317-361-5044

- Essential Oil testing is performed by using qualitative GC-MS. Method: SOP.T.01 Client Method  
 - This report may not be published without the consent of Essential Validation Services.  
 - Chromatograph image may be requested  
 - This report is valid for 1 year from the analyzed date

Client



Source

Ravintsara (*Cinnamomum camphora*)

MA-59027

Total Percentage		99.57%		
Number	RT	Area %	Compound Name	Chemical Family
1	6.05	0.01%	cis-Hex-3-en-1-ol	Aliphatic Alcohol
2	8.31	0.01%	Tricyclene	Monoterpene
3	8.47	0.70%	alpha-Thujene	Monoterpene
4	8.73	4.28%	alpha-Pinene	Monoterpene
5	9.36	0.15%	Camphene	Monoterpene
6	10.35	13.88%	Sabinene	Monoterpene
7	10.51	3.18%	beta-Pinene	Monoterpene
8	10.87	0.01%	6-Methyl-5-hepten-2-one	Aliphatic Ketone
9	11.09	1.24%	Myrcene	Monoterpene
10	11.76	0.02%	alpha-Phellandrene	Monoterpene
11	12.24	0.10%	alpha-Terpinene	Monoterpene
12	12.59	1.32%	para-Cymene	Monoterpene
13	12.99	61.28%	1,8-Cineole	Monoterpene Ether
14	13.17	0.03%	(Z)-beta-Ocimene	Monoterpene
15	13.63	0.13%	(E)-beta-Ocimene	Monoterpene
16	14.12	0.25%	gamma-Terpinene	Monoterpene
17	14.63	0.36%	cis-Sabinene hydrate	Monoterpenol
18	15.36	0.10%	Isoterpinolene	Monoterpene
19	16.04	0.23%	trans-Sabinene hydrate	Monoterpenol
20	17.13	0.10%	cis-para-Menth-2-en-1-ol	Monoterpenol
21	17.39	0.01%	Alloocimene	Monoterpene
22	17.85	0.02%	trans-Pinocarveol	Monoterpenol
23	17.97	0.06%	trans-para-Menth-2-en-1-ol	Monoterpenol
24	19.26	0.73%	delta-Terpineol	Monoterpenol
25	19.74	2.17%	Terpinen-4-ol	Monoterpenol
26	19.97	0.02%	Cryptone	Monoterpene Ketone
27	20.05	0.02%	para-Cymen-8-ol	Monoterpenol
28	20.46	7.76%	alpha-Terpineol	Monoterpenol
29	21.08	0.03%	trans-Piperitol	Monoterpenol
30	21.82	0.06%	Nerol	Monoterpenol
31	22.41	0.01%	Neral	Monoterpene Aldehyde
32	24.65	0.02%	Safrole	Phenylpropanoid
33	26.60	0.02%	delta-Elemene	Sesquiterpene
34	28.78	0.01%	beta-Bourbonene	Sesquiterpene
35	29.08	0.06%	beta-Elemene	Sesquiterpene

ESSENTIAL VALIDATION SERVICES | 747 SW 2<sup>ND</sup> AVE GAINESVILLE, FLORIDA 32601 | 317-361-5044

- Essential Oil testing is performed by using qualitative GC-MS. Method: SOP.T.01 Client Method  
 - This report may not be published without the consent of Essential Validation Services.  
 - Chromatograph image may be requested  
 - This report is valid for 1 year from the analyzed date



