

Sample:

Client: | Nature's Gift
Sample: | Ravintsara (Cinnamomum camphora)
Batch # | MA-58607
CAS Number | 92201-50-8
Type: | Essential Oil

Conclusion:

- No adulterants, diluents, or contaminants were detected via this method.
- This oil meets the expected profile for genuine essential oil of Ravintsara (Cinnamomum camphora).

X



Validated By:



Essential Validation Services

747 SW 2nd Ave, Gainesville, FL 32601

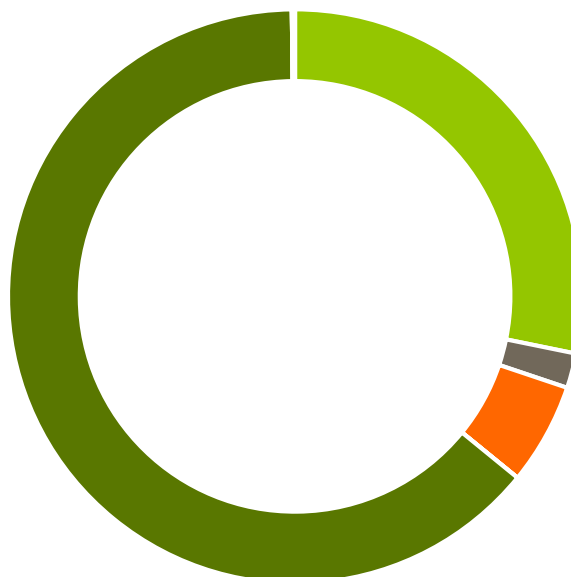
Phone: 317-361-5044 E-mail: Adam@essentialvalidationservices.com

Summary of Analyses

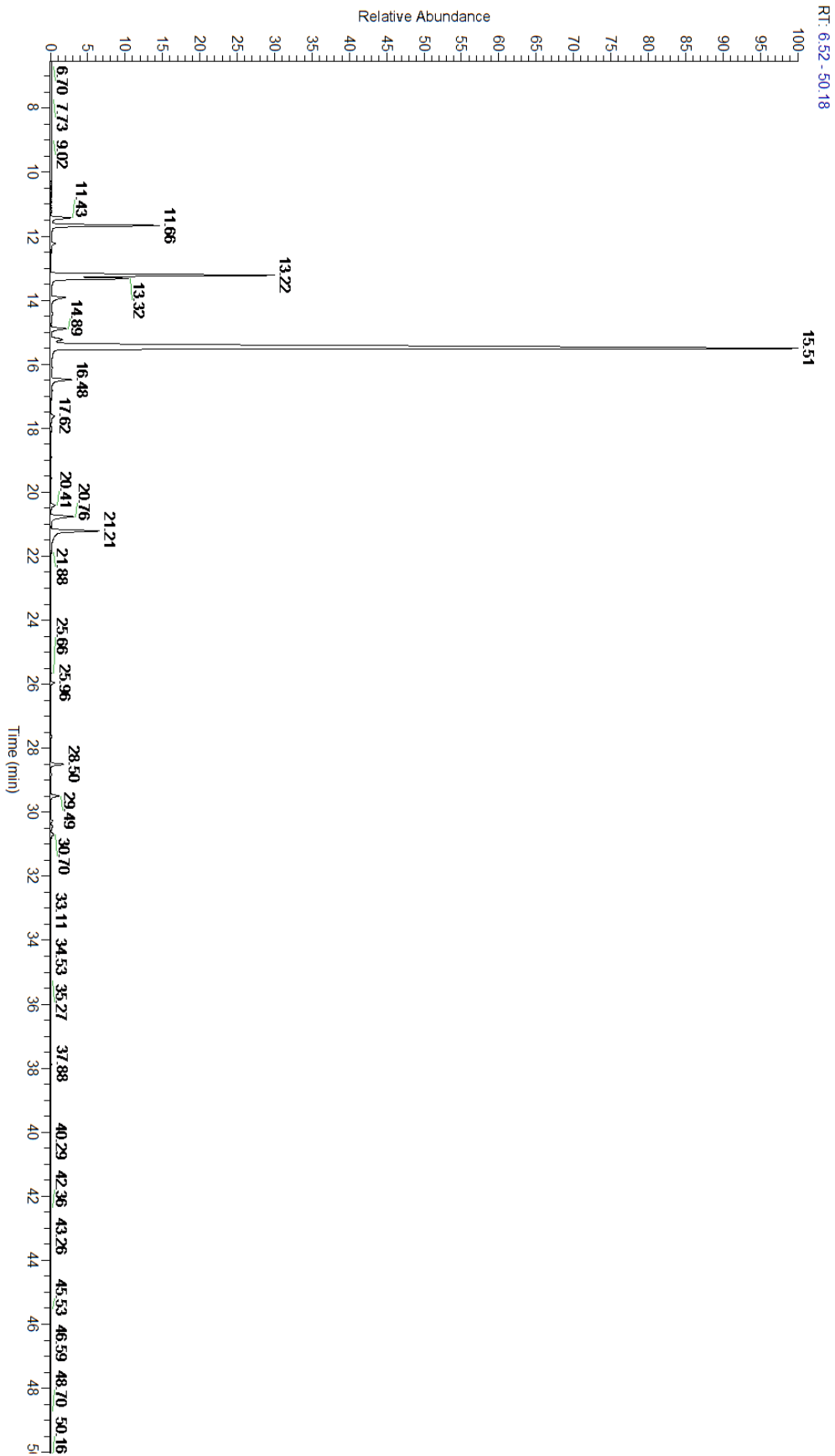
A fresh sample of Ravintsara (Cinnamomum camphora) Essential Oil (10 uL in .5to.5 mL Hexane + ETOH) was prepared and analyzed via split injection GC/EI-MS.

Main Compounds	Percentages
1,8-Cineole (Co-Eluting)	63.93%
Sabinene	12.43%
alpha-Pinene	5.80%
beta-Pinene	4.12%
alpha-Terpineol	3.40%
Terpinen-4-ol	1.62%
gamma-Terpinene	1.40%
alpha-Thujene	1.14%
Myrcene	1.11%
alpha-Terpinene	0.97%
para-Cymene	0.86%
beta-Caryophyllene	0.73%
alpha-Humulene	0.48%

Monoterpenes	Sesquiterpenes	Monoterpenols	Sesquiterpenols	Ketones
28.20%	1.96%	5.73%	0.00%	0.00%
Esters	Ethers	Aldehydes	Phenols	Other
0.00%	63.93%	0.00%	0.00%	0.18%



- Monoterpenes
- Sesquiterpenes
- Monoterpenols
- Sesquiterpenols
- Ketones
- Esters
- Ethers
- Phenols
- Other



ESSENTIAL VALIDATION SERVICES | 747 SW 2ND AVE GAINESVILLE, FLORIDA 32601 | 317-361-5044

Total Percentage		99.82%			
Peak Number	RT	Area %	Compound Name	RI	Chemical Family
1	11.43	1.14%	alpha-Thujene	927.80	Monoterpene
2	11.66	5.80%	alpha-Pinene	936.10	Monoterpene
3	12.23	0.22%	Camphene	950.30	Monoterpene
4	13.22	12.43%	Sabinene	973.00	Monoterpene
5	13.32	4.12%	beta-Pinene	974.00	Monoterpene
6	13.92	1.11%	Myrcene	989.20	Monoterpene
7	14.42	0.09%	alpha-Phellandrene	1002.00	Monoterpene
8	14.89	0.97%	alpha-Terpinene	1014.00	Monoterpene
9	15.23	0.86%	para-Cymene	1024.30	Monoterpene
10	15.51	63.93%	1,8-Cineole	1031.80	Monoterpene Ether
11	15.51	Co-Eluting	Limonene	1029.50	Monoterpene
12	15.77	0.01%	(Z)-beta-Ocimene	1037.80	Monoterpene
13	16.11	0.05%	(E)-beta-Ocimene	1047.70	Monoterpene
14	16.48	1.40%	gamma-Terpinene	1054.00	Monoterpene
15	16.82	0.08%	trans-Sabinene hydrate	1072.00	Monoterpenol
16	17.62	0.29%	cis-Sabinene hydrate	1094.50	Monoterpenol
17	17.99	0.03%	Linalool	1099.00	Monoterpenol
18	19.55	0.01%	trans-para-Menth-2-en-1-ol	1141.75	Monoterpenol
19	20.41	0.30%	delta-Terpineol	1166.00	Monoterpenol
20	20.76	1.62%	Terpinen-4-ol	1180.57	Monoterpenol
21	21.21	3.40%	alpha-Terpineol	1191.71	Monoterpenol
22	25.96	0.20%	delta-Elemene	1335.83	Sesquiterpene
23	27.63	0.06%	beta-Elemene	1389.20	Sesquiterpene
24	28.50	0.73%	beta-Caryophyllene	1427.14	Sesquiterpene
25	28.84	0.06%	gamma-Elemene	1434.00	Sesquiterpene
26	29.49	0.48%	alpha-Humulene	1461.43	Sesquiterpene
27	30.27	0.08%	Germacrene D	1484.71	Sesquiterpene
28	30.44	0.13%	beta-Selinene	1487.57	Sesquiterpene
29	30.70	0.22%	Bicyclogermacrene	1490.71	Sesquiterpene