

Sample:

Client: | Nature's Gift
Sample: | Patchouli (Pogostemon cablin) Organic
Batch # | ID-58750
CAS Number | 8014-09-3
Type: | Essential Oil

Conclusion:

- No adulterants, diluents, or contaminants were detected via this method.
- This oil meets the expected profile for genuine essential oil of Patchouli (Pogostemon cablin).



X



Validated By:

Essential Validation Services

747 SW 2nd Ave, Gainesville, FL 32601

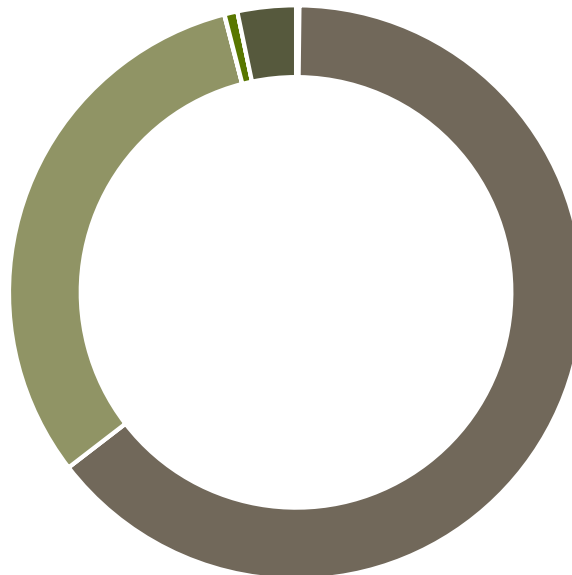
Phone: 317-361-5044 E-mail: Adam@essentialvalidationservices.com

Summary of Analyses

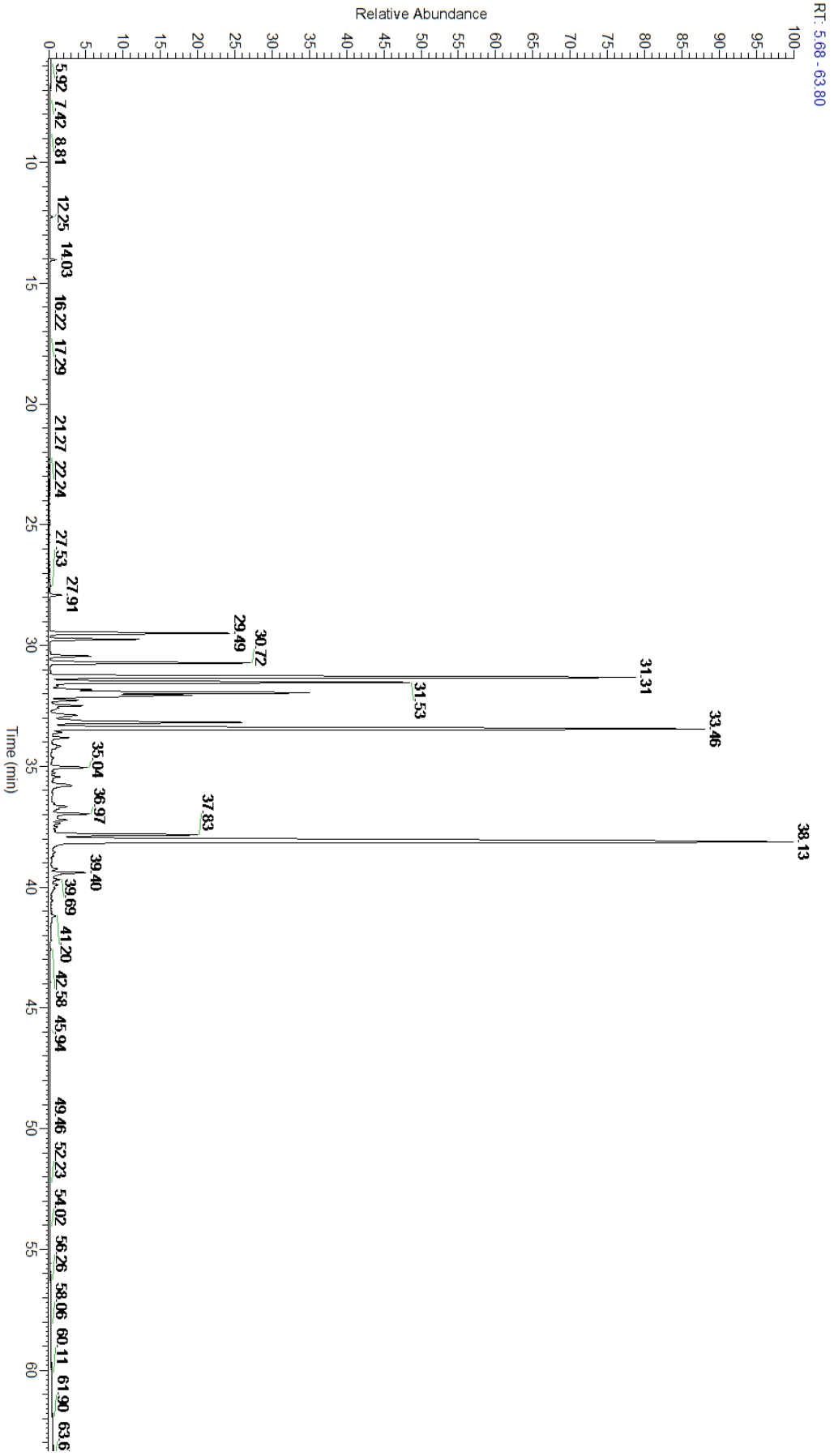
A fresh sample of Patchouli (Pogostemon cablin) Essential Oil (10 uL in .5to.5 mL Hexane + ETOH) was prepared and analyzed via split injection GC/EI-MS.

Main Compounds	Percentages
Patchouli alcohol	26.41%
delta-Guaiene	17.07%
alpha-Guaiene	13.48%
gamma-Patchoulene	7.49%
alpha-Patchoulene	5.45%
Aciphyllene	4.39%
beta-Caryophyllene	3.79%
gamma-Gurjunene	3.41%
beta-Patchoulene	3.40%
Pogostol	3.01%
beta-Elemene	1.54%
1-epi-Cubenol	0.84%
alpha-Selinene	0.82%

Monoterpenes	Sesquiterpenes	Monoterpenols	Sesquiterpenols	Ketones
0.19%	64.37%	0.00%	31.41%	0.02%
Esters	Ethers	Aldehydes	Phenols	Other
0.00%	0.73%	0.00%	0.00%	3.28%



- Monoterpenes ■ Sesquiterpenes ■ Monoterpenols
- Sesquiterpenols ■ Ketones ■ Esters
- Ethers ■ Phenols ■ Other



Total Percentage		98.28%			
Peak Number	RT	Area %	Compound Name	RI	Chemical Family
1	12.25	0.04%	alpha-Pinene	936.10	Monoterpene
2	14.03	0.10%	beta-Pinene	974.00	Monoterpene
3	16.22	0.05%	Limonene	1029.50	Monoterpene
4	27.91	0.21%	delta-Elemene	1335.83	Sesquiterpene
5	29.49	3.40%	beta-Patchoulene	1380.00	Sesquiterpene
6	29.74	1.54%	beta-Elemene	1389.20	Sesquiterpene
7	30.29	0.02%	cis-Caryophyllene	1403.65	Sesquiterpene
8	30.44	0.76%	Cycloseychellene	1410.30	Sesquiterpene
9	30.72	3.79%	beta-Caryophyllene	1427.14	Sesquiterpene
10	31.31	13.48%	alpha-Guaiene	1438.67	Sesquiterpene
11	31.53	7.49%	gamma-Patchoulene	1454.00	Sesquiterpene
12	31.68	0.12%	Seychellene	1461.40	Sesquiterpene
13	31.83	0.66%	alpha-Humulene	1461.43	Sesquiterpene
14	31.95	5.45%	alpha-Patchoulene	1465.60	Sesquiterpene
15	32.06	3.41%	gamma-Gurjunene	1473.17	Sesquiterpene
16	32.27	0.46%	delta-Patchoulene	1476.30	Sesquiterpene
17	32.49	0.58%	gamma-Murolene	1478.86	Sesquiterpene
18	32.59	0.18%	beta-Selinene	1487.57	Sesquiterpene
19	32.89	0.82%	alpha-Selinene	1492.50	Sesquiterpene
20	33.18	4.39%	Aciphyllene	1501.10	Sesquiterpene
21	33.46	17.07%	delta-Guaiene	1511.50	Sesquiterpene
22	33.60	0.18%	Cubebol	1515.10	Sesquiterpenol
23	33.81	0.31%	epi-alpha-Selinene	1520.33	Sesquiterpene
24	34.18	0.23%	alpha-Cadinene	1537.86	Sesquiterpene
25	35.04	0.75%	Norpatchoulenol	1577.00	Norsesquiterpenol
26	35.44	0.16%	Spathulenol	1587.00	Sesquiterpenol
27	35.80	0.73%	Caryophyllene oxide	1594.86	Sesquiterpene Ether
28	36.66	0.34%	1,10-di-epi-Cubenol	1612.29	Sesquiterpenol
29	36.75	0.15%	Ledol	1623.00	Sesquiterpenol
30	36.97	0.84%	1-epi-Cubenol	1628.00	Sesquiterpenol
31	37.22	0.32%	T-Cadinol	1640.43	Sesquiterpenol
32	37.83	3.01%	Pogostol	1651.50	Sesquiterpenol
33	38.13	26.41%	Patchouli alcohol	1660.50	Sesquiterpenol
34	38.88	0.02%	Patchoulenone	1701.00	Sesquiterpene Ketone
35	39.40	0.81%	Pogostone	1708.00	Lactone