

Palo Santo (*Bursera graveolens*)

## Sample:



Client: | Nature's Gift  
 Sample: | Palo Santo  
 Latin Name: | Bursera graveolens  
 Batch #: | PE-48611  
 CAS Number: | 959130-05-3  
 Type: | Essential Oil

## Laboratory:



### Essential Validation Services

<https://essentialvalidationservices.com/>  
[adam@essentialvalidationservices.com](mailto:adam@essentialvalidationservices.com)  
 747 SW 2nd Ave, Suite 306 IMB 12  
 Gainesville, FL 32601  
 317-361-5044

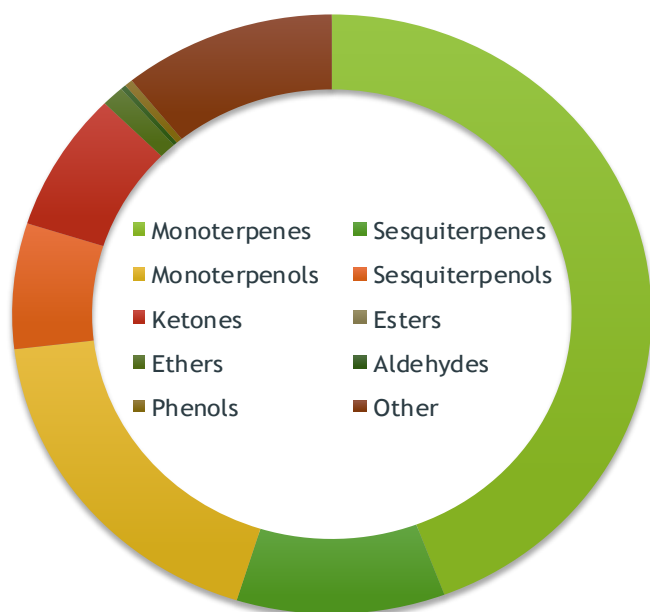
## Top 5 Compounds:

No adulterants, diluents, or contaminants were detected via this method. This oil meets the expected profile for genuine essential oil of Palo Santo (*Bursera graveolens*).

## Conclusion:



Compounds	%
Limonene	40.45%
alpha-Terpineol	13.01%
beta-Bisabolene	7.31%
gamma-Eudesmol	4.40%
Carvone	4.20%



## Chemical Families

Monoterpenes	Sesquiterpenes
44.27%	10.54%
Monoterpenols	Sesquiterpenols
18.32%	6.77%
Ketones	Esters
7.52%	0.00%
Ethers	Aldehydes
1.13%	0.27%
Phenols	Other
0.41%	10.77%

X

Adam Christensen  
CEO



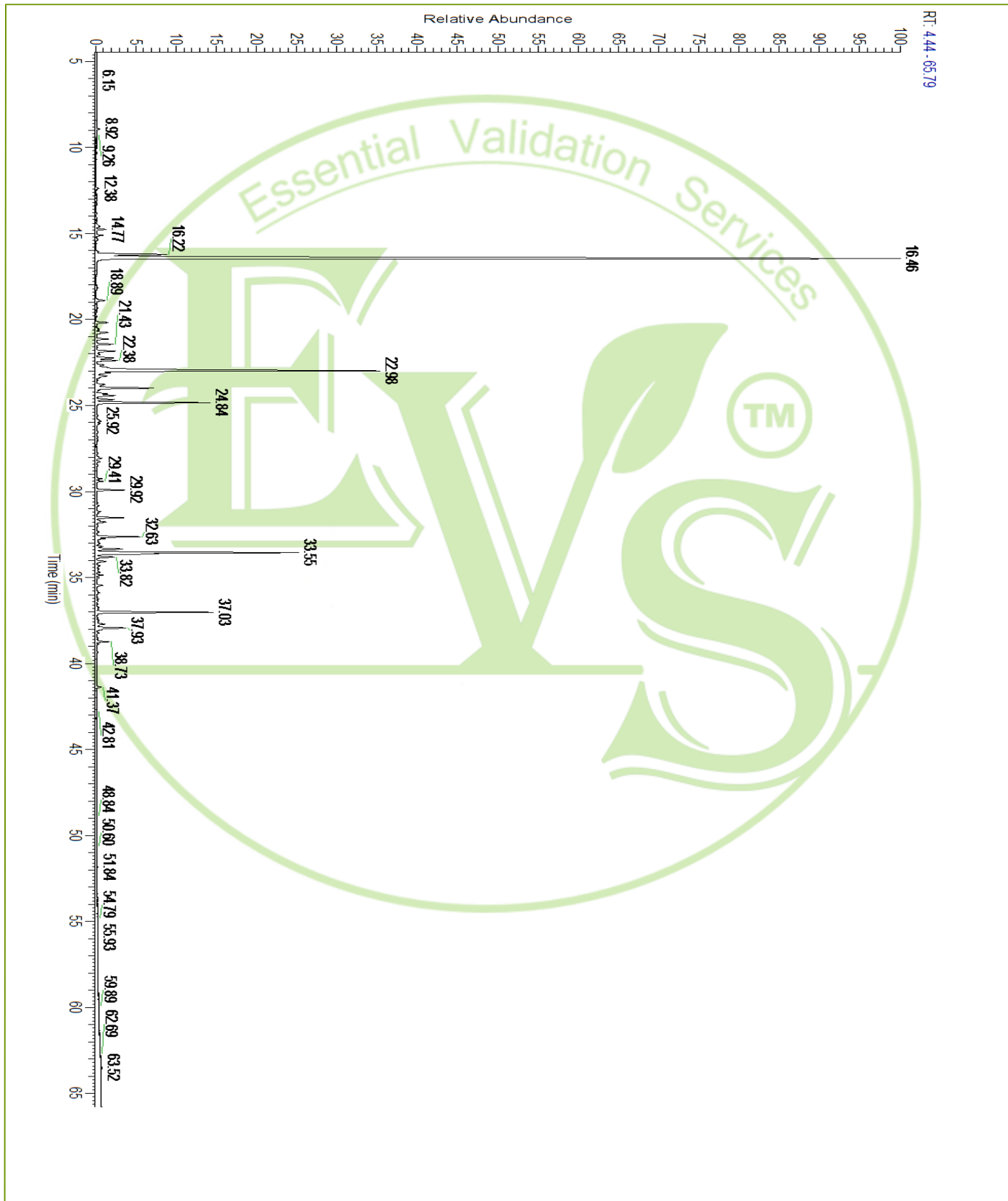
Palo Santo (*Bursera graveolens*)

Total Percentage		89.23%			
Number	RT	Area %	Compound Name	RI	Chemical Family
1	12.38	0.07%	alpha-Pinene	936.10	Monoterpene
2	14.11	0.02%	6-Methyl-5-hepten-2-one	982.00	Aliphatic Ketone
3	14.77	0.30%	dehydro-1,8-cineole	989.80	Monoterpene Ether
4	16.22	3.31%	para-Cymene	1024.30	Monoterpene
5	16.46	40.45%	Limonene	1029.50	Monoterpene
6	18.16	0.06%	gamma-Terpinene	1054.00	Monoterpene
7	18.89	0.38%	para-Cymenene	1092.43	Monoterpene
8	19.33	0.04%	Linalool	1099.00	Monoterpenol
9	20.18	0.43%	trans-p-Mentha-2,8-dien-1-ol	1123.10	Monoterpenol
10	20.53	0.09%	Limona ketone	1134.50	Simple Phenolic
11	20.63	0.08%	cis-Limonene oxide	1136.00	Monoterpene Ether
12	20.76	0.55%	cis-p-Mentha-2,8-dien-1-ol	1137.50	Monoterpenol
13	21.14	0.42%	cis-beta-Terpineol	1144.20	Monoterpenol
14	21.43	0.58%	Menthone	1155.00	Monoterpene Ketone
15	21.84	0.75%	Menthofuran	1164.00	Monoterpene Ether
16	22.24	0.66%	Neo-menthol	1165.00	Monoterpenol
17	22.38	0.77%	trans-para-mentha-1(7),8-dien-2-c	1187.00	Sesquiterpenol
18	22.64	0.32%	para-Methylacetophenone	1186.50	Simple Phenolic
19	22.98	13.01%	alpha-Terpineol	1191.71	Monoterpenol
20	23.11	0.63%	cis-dihydroCarvone	1197.57	Monoterpene Ketone
21	23.29	0.44%	trans-dihydrocarvone	1203.83	Monoterpene Ketone
22	23.78	0.44%	Verbenone	1213.80	Monoterpene Ketone
23	23.99	2.34%	trans-Carveol	1223.14	Monoterpenol
24	24.31	0.39%	(Z)-Ocimenone	1231.00	Monoterpene Ketone
25	24.42	0.77%	cis-Carveol	1232.25	Monoterpenol
26	24.66	0.64%	Pulegone	1244.43	Monoterpene Ketone
27	24.84	4.20%	Carvone	1248.14	Monoterpene Ketone
28	25.21	0.01%	Piperitone	1258.50	Monoterpene Ketone
29	25.58	0.05%	Carvone oxide		
30	25.92	0.27%	Perillaldehyde	1281.00	Monoterpene Aldehyde
31	26.54	0.10%	Cumin alcohol	1301.55	Monoterpenol
32	28.07	0.17%	delta-Elemene	1335.83	Sesquiterpene
33	28.26	0.17%	Piperitenone	1347.00	Sesquiterpene Ketone
34	28.49	0.06%	alpha-Cubebene	1355.71	Sesquiterpene
35	29.92	0.95%	beta-Elemene	1389.20	Sesquiterpene
36	30.83	0.09%	Mint Furanone Isomer		
37	31.27	0.06%	cis-alpha-Bergamotene	1411.50	Sesquiterpene
38	31.77	0.37%	Aromadendrene	1449.80	Sesquiterpene
39	33.20	0.18%	gamma-Muurolene	1478.86	Sesquiterpene
40	33.35	1.03%	alpha-Amorphene	1481.75	Sesquiterpene





Palo Santo (Bursera graveolens)



ESSENTIAL VALIDATION SERVICES | 747 SW 2<sup>ND</sup> AVE GAINESVILLE, FLORIDA 32601 | 317-361-5044