



## Sample:

---

Client: | Nature's Gift  
Sample: | Oregano (Thymus capitatus)  
Batch # | EG-58625  
Type: | Essential Oil

---

## Conclusion:

- No adulterants, diluents, or contaminants were detected via this method.



X *Adam Christen*

---

Validated By:

Essential Validation Services

747 SW 2nd Ave, Gainesville, FL 32601

Phone: 317-361-5044 E-mail: [Adam@essentialvalidationservices.com](mailto:Adam@essentialvalidationservices.com)

## Summary of Analyses

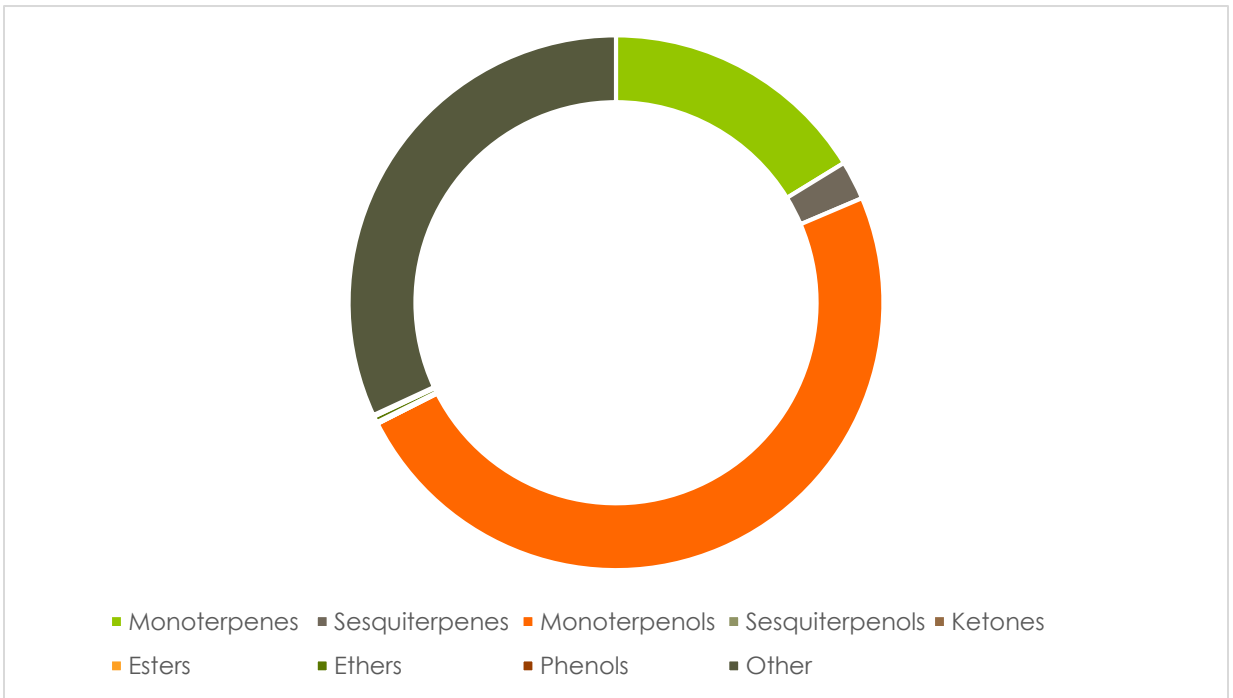
---

A fresh sample of Oregano (Thymus capitatus) Essential Oil (10 uL in .5to.5 mL Hexane + ETOH) was prepared and analyzed via split injection GC/EI-MS.

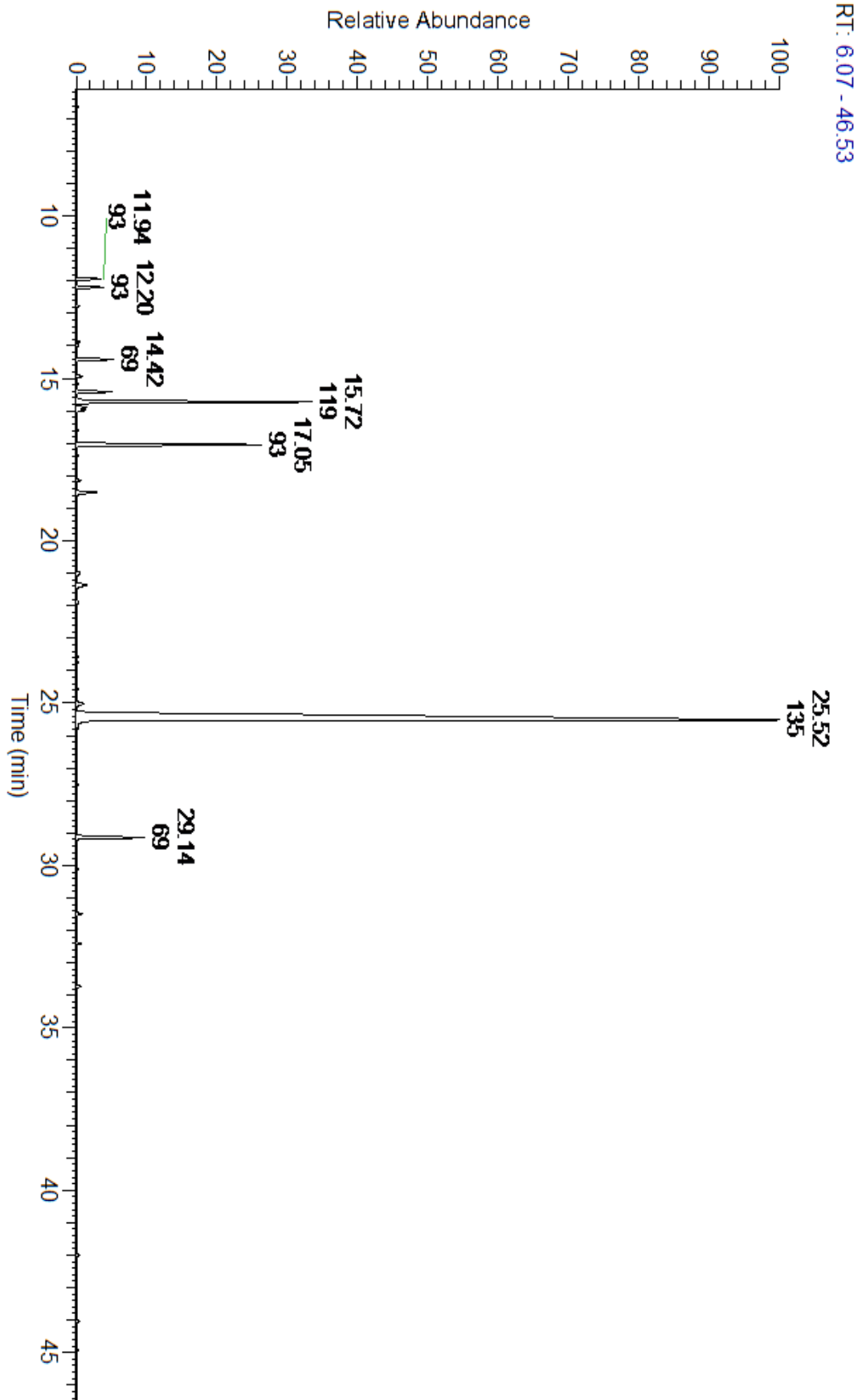


Main Compounds	Percentages
Carvacrol	68.89%
para-Cymene	9.84%
gamma-Terpinene	7.73%
beta-Caryophyllene	2.87%
alpha-Terpinene	1.43%
Myrcene	1.37%
alpha-Pinene	1.10%
Linalool	1.00%
alpha-Thujene	0.96%
Terpinen-4-ol	0.67%

Monoterpenes	Sesquiterpenes	Monoterpenols	Sesquiterpenols	Ketones
23.72%	3.45%	71.43%	0.00%	0.08%
Esters	Ethers	Aldehydes	Phenols	Other
0.07%	0.54%	0.14%	0.00%	0.58%



ESSENTIAL VALIDATION SERVICES | 747 SW 2<sup>ND</sup> AVE GAINESVILLE, FLORIDA 32601 | 317-361-5044



ESSENTIAL VALIDATION SERVICES | 747 SW 2<sup>ND</sup> AVE GAINESVILLE, FLORIDA 32601 | 317-361-5044

Total Percentage		99.54%				
Peak Number	RT	Area %	Compound Name	RI	Chemical Family	
1	11.94	0.96%	alpha-Thujene	927.80	Monoterpene	
2	12.20	1.10%	alpha-Pinene	936.10	Monoterpene	
3	12.78	0.11%	Camphene	950.30	Monoterpene	
4	13.87	0.14%	beta-Pinene	974.00	Monoterpene	
5	13.98	0.11%	1-Octen-3-ol	980.00	Aliphatic Alcohol	
6	14.42	1.37%	Myrcene	989.20	Monoterpene	
7	14.62	0.01%	3-Octanol	992.00	Aliphatic Alcohol	
8	14.94	0.23%	alpha-Phellandrene	1002.00	Monoterpene	
9	15.17	0.07%	delta-3-Carene	1008.00	Monoterpene	
10	15.41	1.43%	alpha-Terpinene	1014.00	Monoterpene	
11	15.72	9.84%	para-Cymene	1024.30	Monoterpene	
12	15.89	0.47%	Limonene	1029.50	Monoterpene	
13	15.98	0.36%	1,8-Cineole	1031.80	Monoterpene Ether	
14	16.21	0.01%	(Z)-beta-Ocimene	1037.80	Monoterpene	
15	16.60	0.08%	(E)-beta-Ocimene	1047.70	Monoterpene	
16	17.05	7.73%	gamma-Terpinene	1054.00	Monoterpene	
17	17.37	0.10%	cis-Sabinene hydrate	1072.00	Monoterpenol	
18	18.15	0.18%	Terpinolene	1092.10	Monoterpene	
19	18.51	1.00%	Linalool	1099.00	Monoterpenol	
20	20.99	0.26%	Borneol	1168.71	Monoterpenol	
21	21.36	0.67%	Terpinen-4-ol	1180.57	Monoterpenol	
22	21.90	0.12%	alpha-Terpineol	1191.71	Monoterpenol	
23	22.11	0.01%	cis-Dihydrocarvone	1197.57	Monoterpene Ketone	
24	23.17	0.01%	Methyl thymol	1234.57	Monoterpene Ether	
25	23.58	0.06%	Neral	1246.57	Monoterpene Aldehyde	
26	23.75	0.07%	Carvone	1248.14	Monoterpene Ketone	
27	24.57	0.08%	Geranial	1272.00	Monoterpene Aldehyde	
28	25.02	0.39%	Thymol	1288.15	Monoterpenol	
29	25.52	68.89%	Carvacrol	1304.40	Monoterpenol	
30	27.53	0.07%	Carvacryl acetate	1370.00	Monoterpene Ester	
31	29.14	2.87%	beta-Caryophyllene	1427.14	Sesquiterpene	
32	29.46	0.01%	trans-alpha-Bergamotene	1435.00	Sesquiterpene	
33	29.69	0.03%	Aromadendrene	1449.80	Sesquiterpene	
34	30.11	0.09%	alpha-Humulene	1461.43	Sesquiterpene	
35	31.27	0.02%	Viridiflorene	1494.14	Sesquiterpene	
36	31.50	0.21%	beta-Bisabolene	1509.86	Sesquiterpene	
37	31.76	0.01%	gamma-Cadinene	1515.29	Sesquiterpene	
38	31.98	0.02%	delta-Cadinene	1524.14	Sesquiterpene	
39	32.41	0.19%	gamma-Cuprenene	1535.50	Sesquiterpene	
40	33.72	0.17%	Caryophyllene oxide	1594.86	Sesquiterpene Ether	