

Client



Source



Niaouli (*Melaleuca quinquenervia*)
MA-58924

Sample

Niaouli (*Melaleuca quinquenervia*)
Batch #:..... MA-58924
Type:..... Essential Oil CAS
Number:... 8014-68-4
Nature's Gift

Client



Website

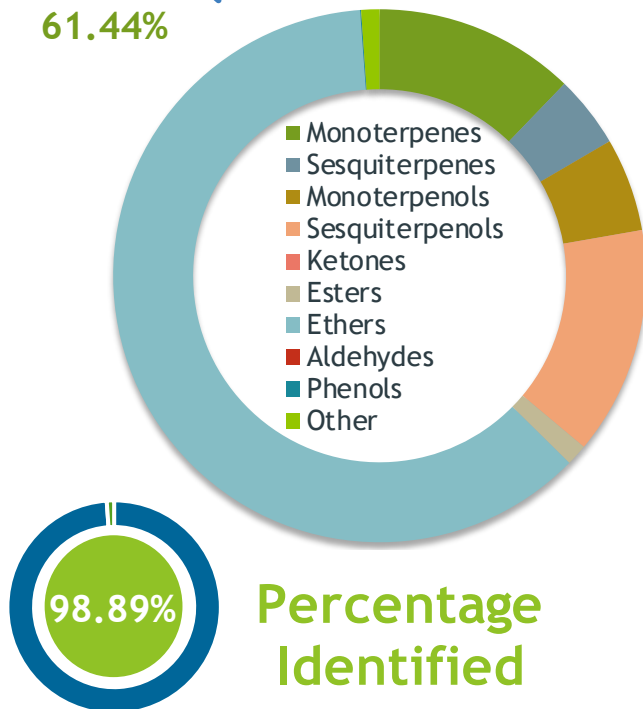


Primary

61.19% | **1,8-Cineole (Co-Eluting)**
7.79% | **alpha-Pinene**
7.17% | **(E)-Nerolidol**

Ethers

61.44%



Result



Conclusion

No adulterants, diluents, or contaminants were detected via this method. This oil meets the expected profile for genuine essential oil of Niaouli (*Melaleuca quinquenervia*)

Internal Number: | EVS-2924



Essential Validation Services

747 SW 2nd Ave IMB 12 Suite 306
Gainesville, FL 32601

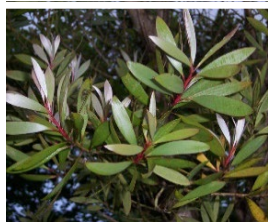
317.361.5044 |
<https://essentialvalidationservices.com/>
adam@essentialvalidationservices.com

Monoterpenes	12.2	12.20%
Sesquiterpenes	4.38	4.38%
Monoterpenols	5.67	5.67%
Sesquiterpenols	13.85	13.85%
Ketones	0.00	0.00%
Esters	1.29	1.29%
Ethers	61.44	61.44%
Aldehydes	0.00	0.00%
Phenols	0.06	0.06%
Other	1.11	1.11%

Client



Source



Niaouli (*Melaleuca quinquenervia*)
MA-58924

Total Percentage		98.89%			
Number	RT	Area %	Compound Name	RI	Chemical Family
1	12.53	0.08%	alpha-Thujene	927.80	Monoterpene
2	12.81	7.79%	alpha-Pinene	936.10	Monoterpene
3	13.42	0.06%	Camphene	950.30	Monoterpene
4	13.91	0.06%	Benzaldehyde	958.00	Simple Phenolic
5	14.60	1.89%	beta-Pinene	974.00	Monoterpene
6	15.20	0.83%	Myrcene	989.20	Monoterpene
7	15.74	0.07%	alpha-Phellandrene	1002.00	Monoterpene
8	16.28	0.16%	alpha-Terpinene	1014.00	Monoterpene
9	16.63	0.46%	para-Cymene	1024.30	Monoterpene
10	16.99	61.19%	1,8-Cineole	1031.80	Monoterpene Ether
11	17.00	Co-Eluting	Limonene	1029.50	Monoterpene
12	17.15	0.04%	(Z)-beta-Ocimene	1037.80	Monoterpene
13	17.58	0.04%	(E)-beta-Ocimene	1047.70	Monoterpene
14	18.03	0.52%	gamma-Terpinene	1054.00	Monoterpene
15	19.25	0.26%	Terpinolene	1092.10	Monoterpene
16	19.65	0.15%	Linalool	1099.00	Monoterpenol
17	21.50	0.05%	Isopulegol	1151.25	Monoterpenol
18	22.32	0.10%	delta-Terpineol	1166.00	Monoterpenol
19	22.72	0.55%	Terpinen-4-ol	1180.57	Monoterpenol
20	23.24	4.82%	alpha-Terpineol	1191.71	Monoterpenol
21	28.77	1.29%	alpha-Terpinyl acetate	1353.00	Monoterpene Ester
22	30.93	0.11%	alpha-Gurjunene	1412.00	Sesquiterpene
23	31.26	2.17%	beta-Caryophyllene	1427.14	Sesquiterpene
24	31.91	0.15%	alpha-Guaiene	1438.67	Sesquiterpene
25	32.34	0.31%	alpha-Humulene	1461.43	Sesquiterpene
26	32.97	0.07%	gamma-Selinene	1465.50	Sesquiterpene
27	33.37	0.16%	beta-Selinene	1487.57	Sesquiterpene
28	33.61	1.10%	Viridiflorene	1494.14	Sesquiterpene
29	34.16	0.13%	gamma-Cadinene	1515.29	Sesquiterpene
30	34.40	0.18%	delta-Cadinene	1524.14	Sesquiterpene
31	35.48	7.17%	(E)-Nerolidol	1567.00	Sesquiterpenol
32	35.84	0.16%	Palustrol	1581.50	Sesquiterpenol
33	36.31	0.25%	Caryophyllene oxide	1594.86	Sesquiterpene Ether
34	36.59	5.88%	Viridiflorol	1596.00	Sesquiterpenol
35	36.90	0.57%	Ledol	1623.00	Sesquiterpenol

ESSENTIAL VALIDATION SERVICES | 747 SW 2ND AVE GAINESVILLE, FLORIDA 32601 | 317-361-5044

