



Neroli (Citrus aurantium amara)

Sample:



Laboratory:



Client: | Nature's Gift
 Sample: | Neroli
 Latin Name: | Citrus aurantium amara
 Batch #: | MO-58814
 CAS Number: | 8016-38-4
 Type: | Essential Oil

Essential Validation Services
<https://essentialvalidationservices.com/>
 adam@essentialvalidationservices.com
 747 SW 2nd Ave, Suite 306 IMB 12
 Gainesville, FL 32601
 317-361-5044

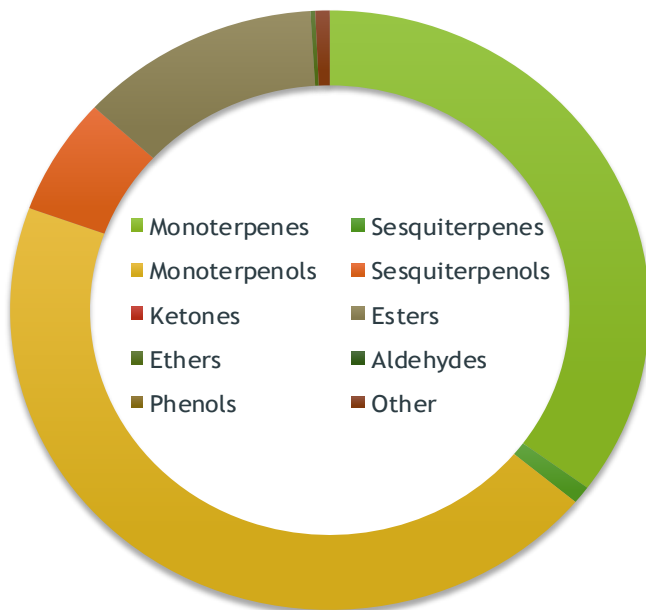
Top 5 Compounds:

Conclusion:



No adulterants, diluents, or contaminants were detected via this method. This oil meets the expected profile for genuine essential oil of Neroli (Citrus aurantium amara).

| Compounds | % |
|------------------|--------|
| Linalool | 38.97% |
| Limonene | 14.61% |
| beta-Pinene | 10.47% |
| Linalyl acetate | 6.36% |
| (E)-beta-Ocimene | 5.42% |



| Chemical Families | |
|----------------------|------------------------|
| Monoterpenes | Sesquiterpenes |
| 35.09% | 0.96% |
| Monoterpenols | Sesquiterpenols |
| 44.48% | 6.30% |
| Ketones | Esters |
| 0.00% | 12.20% |
| Ethers | Aldehydes |
| 0.24% | 0.00% |
| Phenols | Other |
| 0.00% | 0.73% |

X *Adam Christensen*
 Adam Christensen
 CEO



ESSENTIAL VALIDATION SERVICES | 747 SW 2ND AVE GAINESVILLE, FLORIDA 32601 | 317-361-5044

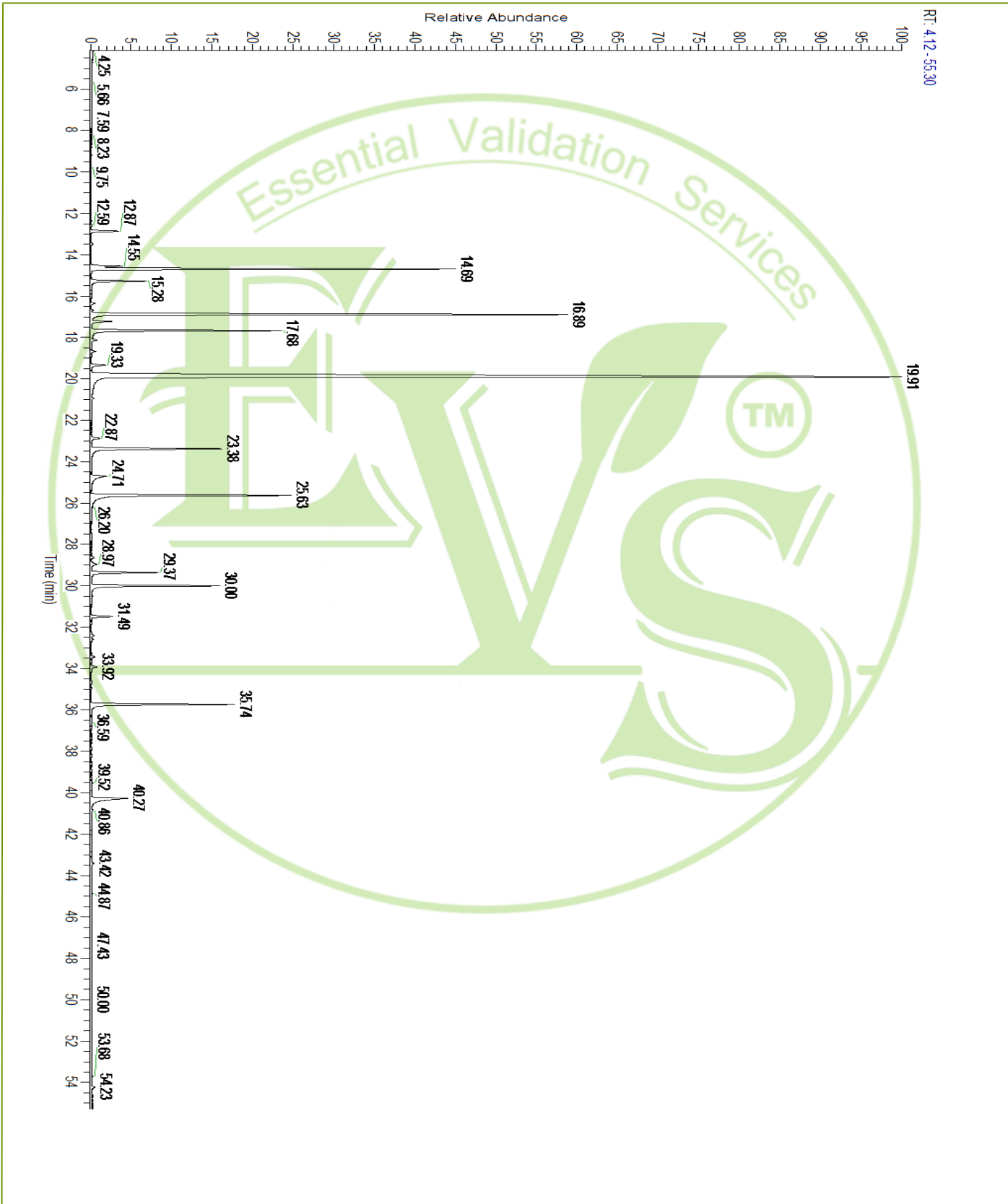


Neroli (Citrus aurantium amara)

| Total Percentage | | 99.27% | | | |
|------------------|-------|--------|-----------------------------------|---------|-------------------|
| Number | RT | Area % | Compound Name | RI | Chemical Family |
| 1 | 12.59 | 0.02% | alpha-Thujene | 927.80 | Monoterpene |
| 2 | 12.87 | 0.73% | alpha-Pinene | 936.10 | Monoterpene |
| 3 | 13.50 | 0.04% | Camphene | 950.30 | Monoterpene |
| 4 | 14.55 | 0.86% | Sabinene | 973.00 | Monoterpene |
| 5 | 14.69 | 10.47% | beta-Pinene | 974.00 | Monoterpene |
| 6 | 15.28 | 1.55% | Myrcene | 989.20 | Monoterpene |
| 7 | 15.97 | 0.01% | delta-3-Carene | 1008.00 | Monoterpene |
| 8 | 16.36 | 0.09% | alpha-Terpinene | 1014.00 | Monoterpene |
| 9 | 16.69 | 0.04% | para-Cymene | 1024.30 | Monoterpene |
| 10 | 16.89 | 14.61% | Limonene | 1029.50 | Monoterpene |
| 11 | 17.23 | 0.60% | (Z)-beta-Ocimene | 1037.80 | Monoterpene |
| 12 | 17.68 | 5.42% | (E)-beta-Ocimene | 1047.70 | Monoterpene |
| 13 | 18.13 | 0.16% | gamma-Terpinene | 1054.00 | Monoterpene |
| 14 | 18.68 | 0.11% | cis-Linalool oxide (5) (furanoid) | 1075.10 | Monoterpenol |
| 15 | 19.33 | 0.45% | Terpinolene | 1092.10 | Monoterpene |
| 16 | 19.91 | 38.97% | Linalool | 1099.00 | Monoterpenol |
| 17 | 20.94 | 0.04% | Alloocimene | 1129.90 | Monoterpene |
| 18 | 22.87 | 0.28% | Terpinen-4-ol | 1180.57 | Monoterpenol |
| 19 | 23.38 | 4.31% | alpha-Terpineol | 1191.71 | Monoterpenol |
| 20 | 24.71 | 0.81% | Nerol | 1230.67 | Monoterpenol |
| 21 | 25.63 | 6.36% | Linalyl acetate | 1263.80 | Monoterpene Ester |
| 22 | 28.64 | 0.07% | delta-Elemene | 1335.83 | Sesquiterpene |
| 23 | 28.97 | 0.24% | alpha-Terpinyl acetate | 1353.00 | Monoterpene Ether |
| 24 | 29.37 | 1.97% | Neryl acetate | 1362.90 | Monoterpene Ester |
| 25 | 30.00 | 3.87% | Geranyl acetate | 1379.20 | Monoterpene Ester |
| 26 | 31.49 | 0.63% | Aromadendrene | 1449.80 | Sesquiterpene |
| 27 | 33.43 | 0.09% | Germacrene D | 1484.71 | Sesquiterpene |
| 28 | 33.92 | 0.17% | Bicyclogermacrene | 1490.71 | Sesquiterpene |
| 29 | 35.74 | 4.41% | (E)-Nerolidol | 1567.00 | Sesquiterpenol |
| 30 | 40.27 | 1.81% | (Z,E)-Farnesol | 1723.00 | Sesquiterpenol |
| 31 | 43.42 | 0.08% | (E,E)-Farnesol | 1742.60 | Sesquiterpenol |
| | | | | | |
| | | | | | |
| | | | | | |
| | | | | | |
| | | | | | |
| | | | | | |
| | | | | | |
| | | | | | |
| | | | | | |
| | | | | | |
| | | | | | |
| | | | | | |
| | | | | | |
| | | | | | |
| | | | | | |
| | | | | | |
| | | | | | |
| | | | | | |
| | | | | | |
| | | | | | |
| | | | | | |
| | | | | | |



Neroli (Citrus aurantium amara)



ESSENTIAL VALIDATION SERVICES | 747 SW 2ND AVE GAINESVILLE, FLORIDA 32601 | 317-361-5044