

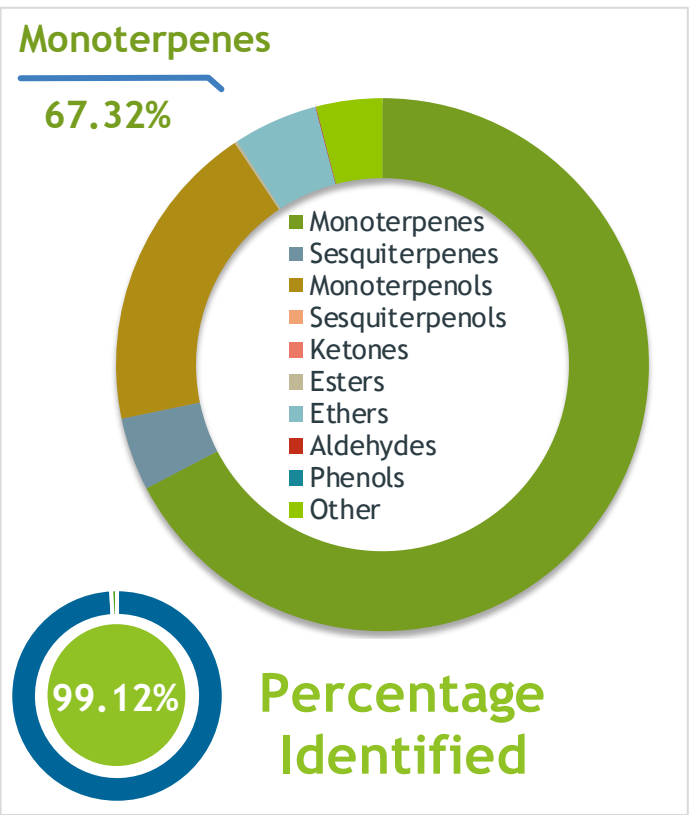
Lime, Distilled (*Citrus aurantifolia*)  
TH-58847

**Client**  **Source** 

**Sample** Lime, Distilled (*Citrus aurantifolia*)  
Batch #:..... TH-58847  
Type:..... Essential Oil  
CAS Number:... 8008-26-2  
**Nature's Gift**

**Client**  **Website** 

**Primary**  
44.59% | Limonene  
10.20% | Terpinolene  
9.12% | alpha-Terpineol



**Result** 

**Conclusion** No adulterants, diluents, or contaminants were detected via this method. This oil meets the expected profile for genuine essential oil of Lime, Distilled (*Citrus aurantifolia*).  
Internal Number: | EVS-2635

  
**Essential Validation Services**  
747 SW 2nd Ave IMB 12 Suite 306  
Gainesville, FL 32601  
317.361.5044 | essentialvalidationservices.com  
adam@essentialvalidationservices.com  


|                 |        |        |
|-----------------|--------|--------|
| Monoterpenes    | 67.32% | 67.32% |
| Sesquiterpenes  | 4.43%  | 4.43%  |
| Monoterpenols   | 18.89% | 18.89% |
| Sesquiterpenols | 0.00%  | 0.00%  |
| Ketones         | 0.00%  | 0.00%  |
| Esters          | 0.16%  | 0.16%  |
| Ethers          | 5.15%  | 5.15%  |
| Aldehydes       | 0.04%  | 0.04%  |
| Phenols         | 0.00%  | 0.00%  |
| Other           | 4.01%  | 4.01%  |

ESSENTIAL VALIDATION SERVICES | 747 SW 2<sup>ND</sup> AVE GAINESVILLE, FLORIDA 32601 | 317-361-5044

Client



Source



Lime, Distilled (*Citrus aurantifolia*)  
TH-58847

| Total Percentage |       | 99.12% |                          |         |                      |
|------------------|-------|--------|--------------------------|---------|----------------------|
| Number           | RT    | Area % | Compound Name            | RI      | Chemical Family      |
| 1                | 10.95 | 0.01%  | Nonane                   | 900.00  | Alkane               |
| 2                | 11.63 | 0.02%  | Tricyclene               | 923.00  | Monoterpene          |
| 3                | 12.12 | 0.71%  | alpha-Thujene            | 927.80  | Monoterpene          |
| 4                | 12.72 | 1.19%  | alpha-Pinene             | 936.10  | Monoterpene          |
| 5                | 13.70 | 0.31%  | Sabinene                 | 973.00  | Monoterpene          |
| 6                | 13.89 | 0.09%  | beta-Pinene              | 974.00  | Monoterpene          |
| 7                | 14.52 | 0.85%  | Myrcene                  | 989.20  | Monoterpene          |
| 8                | 14.73 | 0.01%  | Octanal                  | 998.00  | Aliphatic Aldehyde   |
| 9                | 15.07 | 0.45%  | alpha-Phellandrene       | 1002.00 | Monoterpene          |
| 10               | 15.53 | 5.15%  | 1,4-Cineole              | 1012.00 | Monoterpene Ether    |
| 11               | 15.59 | 2.54%  | alpha-Terpinene          | 1014.00 | Monoterpene          |
| 12               | 15.94 | 3.02%  | para-Cymene              | 1024.30 | Monoterpene          |
| 13               | 16.23 | 44.59% | Limonene                 | 1029.50 | Monoterpene          |
| 14               | 16.48 | 0.05%  | (Z)-beta-Ocimene         | 1037.80 | Monoterpene          |
| 15               | 16.89 | 0.35%  | (E)-beta-Ocimene         | 1047.70 | Monoterpene          |
| 16               | 17.34 | 2.95%  | gamma-Terpinene          | 1054.00 | Monoterpene          |
| 17               | 17.55 | 0.01%  | trans-Sabinene hydrate   | 1072.00 | Monoterpenol         |
| 18               | 18.57 | 10.20% | Terpinolene              | 1092.10 | Monoterpene          |
| 19               | 18.97 | 0.18%  | Linalool                 | 1099.00 | Monoterpenol         |
| 20               | 19.56 | 2.67%  | Fenchol                  | 1099.10 | Monoterpenol         |
| 21               | 19.78 | 0.02%  | cis-para-Menth-2-en-1-ol | 1118.25 | Monoterpenol         |
| 22               | 20.36 | 1.59%  | Terpinen-1-ol            | 1135.50 | Monoterpenol         |
| 23               | 20.78 | 0.91%  | cis-beta-Terpineol       | 1144.20 | Monoterpenol         |
| 24               | 21.27 | 0.09%  | Isoborneol               | 1159.70 | Monoterpenol         |
| 25               | 21.53 | 0.25%  | trans-beta-Terpineol     | 1161.00 | Monoterpenol         |
| 26               | 21.63 | 1.42%  | Borneol                  | 1168.71 | Monoterpenol         |
| 27               | 22.06 | 0.85%  | Terpinen-4-ol            | 1180.57 | Monoterpenol         |
| 28               | 22.39 | 0.04%  | para-Cymen-8-ol          | 1185.25 | Monoterpenol         |
| 29               | 22.64 | 9.12%  | alpha-Terpineol          | 1191.71 | Monoterpenol         |
| 30               | 22.83 | 1.74%  | gamma-Terpineol          | 1198.50 | Monoterpenol         |
| 31               | 23.06 | 0.01%  | Decanal                  | 1206.57 | Aliphatic Aldehyde   |
| 32               | 25.97 | 0.02%  | Geranial                 | 1272.00 | Monoterpene Aldehyde |
| 33               | 26.64 | 0.12%  | Bornyl acetate           | 1288.29 | Monoterpene Ester    |
| 34               | 27.81 | 0.03%  | delta-Elemene            | 1335.83 | Sesquiterpene        |
| 35               | 29.20 | 0.03%  | alpha-Copaene            | 1379.00 | Sesquiterpene        |

ESSENTIAL VALIDATION SERVICES | 747 SW 2<sup>ND</sup> AVE GAINESVILLE, FLORIDA 32601 | 317-361-5044

