



316 Old Hickory Blvd East, Madison, TN 37115

tel (615)612-4270 fax (615)860-9171

sold@naturesgift.com

Balancing Body, Mind and Spirit with Pure Essential Oils

Since 1995

www.naturesgift.com

Lemongrass

Cymbopogon flexuosus

Guatemala

Batch #GU-59038

Aldehydes	75.72%	Monoterpenes	3.65%	Phenols	0.1%
geranial	41.8	limonene	2.10	(E) isoeugenol	0.1
neral	32.41	camphene	0.79		
(E) isocitral	0.55	(Z)- β ocimene	0.18		
(Z) isocitral	0.23	α pinene	0.16		
trans-chrysanthamal	0.23	(E)- β ocimene	0.14	Sesquiterpenes	3.72%
citronellal	0.22	myrcene	0.09	(Z) caryophyllene	1.56
decanal	0.13	tricyclene	0.09	γ cadinene	0.9
octanal	0.06	terpinolene	0.04	β cadinene	0.2
exo-isocitral	0.05	allo ocimene	0.03	α humulene	0.17
dodecanal	0.02	sabinene	0.02	β elemene	0.15
bergamal	0.01	meta-cymene	0.01	trans- γ -bisabolene	0.13
hexadecanal	0.01			γ muurolene	0.13
		Monoterpenols	8.07%	α ylangene	0.11
Ethers	0.54%	geraniol	6.39	epi-cubebol	0.10
caryophyllene oxyde	0.37	linalool	0.99	α longipinene	0.06
α pinene oxide	0.1	borneol	0.36	γ elemene	0.05
perillene	0.04	α terpineol	0.20	α cadinene	0.03
humulene epoxide II	0.03	nerol	0.13	α copaene	0.03
		citronellol	0.11	β cubebene	0.03
		trans carveol	0.06	α muurolene	0.02
		cis-piperitol	0.02	trans-cadina-1,4-diene	0.02
Esters	3.97%	cis-linalool oxide	0.01	trans- α -bergamotene	0.01
geranyl acetate	3.80	trans linalool oxide	0.01	cis-muurola-3,5-diene	0.01
geranyl butyrate	0.09			trans-cadina-1(6),4-diene	0.01
neryl acetate	0.04	Ketones	1.35%		
bornyl acetate	0.01	methyl-6-hepten-5-one-2	1.31	Sesquiterpenols	0.32%
methyl geranate	0.01	4-nonanone	0.04	cubebol	0.21
citronellyl acetate	0.01			elemol	0.07
geranyl formate	0.01	Other	0.02%	1-epi-cubebol	0.02
		cis-hex--3-en-1-ol	0.01	viridiflorol	0.01
		4-heptanone	0.01	β acorenol	0.01


Raw Material: grass

INCI Name: CYMBOPOGON CITRATUS LEAF OIL

Production Method: Steam distillation

Date of Analysis: 4/30/2020

Lemongrass (*Cymbopogon flexuosus*)
GU-59038

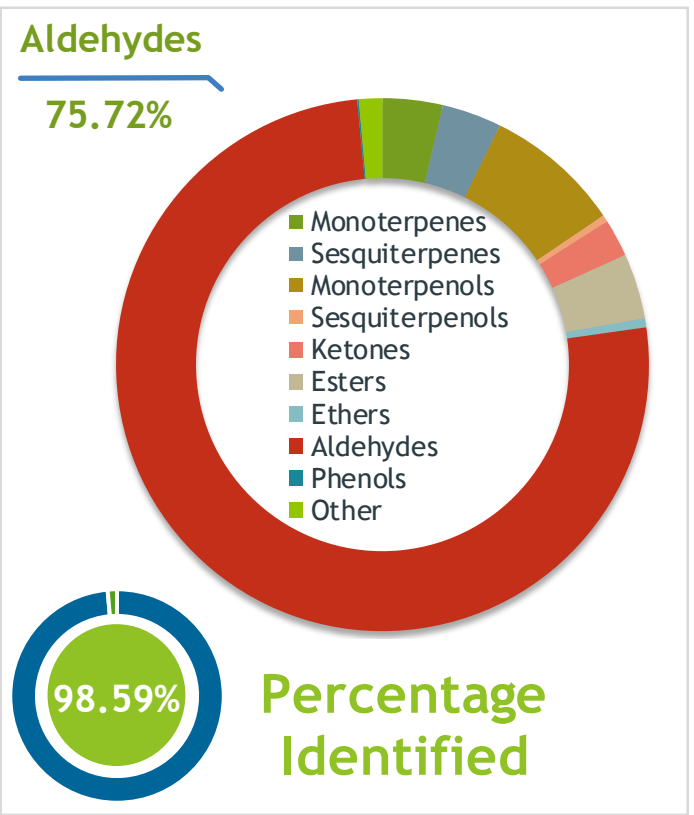
Client  **Source** 

Sample Lemongrass (*Cymbopogon flexuosus*)
 Batch #:..... GU-59038
 Type:..... Essential Oil
 CAS Number:... 91844-92-7
 Nature's Gift

Client  **Website** 

Primary

<u>41.80%</u>	<u>Geranial</u>
<u>32.41%</u>	<u>Neral</u>
<u>6.39%</u>	<u>Geraniol</u>



Result 

Conclusion No adulterants, diluents, or contaminants were detected via this method. This oil meets the expected profile for genuine Essential Oil of Lemongrass (*Cymbopogon flexuosus*)
 Internal Number: | EVS-3663


Essential Validation Services
 747 SW 2nd Ave IMB 12 Suite 306
 Gainesville, FL 32601
 317.361.5044 | <https://essentialvalidationservices.com/>
 adam@essentialvalidationservices.com


Monoterpenes	3.65%
Sesquiterpenes	3.62%
Monoterpenols	8.28%
Sesquiterpenols	0.42%
Ketones	2.28%
Esters	3.97%
Ethers	0.54%
Aldehydes	75.72%
Phenols	0.10%
Other	1.42%

ESSENTIAL VALIDATION SERVICES | 747 SW 2ND AVE GAINESVILLE, FLORIDA 32601 | 317-361-5044

- Essential Oil testing is performed by using qualitative GC-MS. Method: SOP.T.01 Client Method
 - This report may not be published without the consent of Essential Validation Services.
 - Chromatograph image may be requested
 - This report is valid for 1 year from the analyzed date

Client



Source

Lemongrass (*Cymbopogon flexuosus*)

GU-59038

Total Percentage		98.59%		
Number	RT	Area %	Compound Name	Chemical Family
1	5.93	0.01%	cis-Hex-3-en-1-ol	Aliphatic Alcohol
2	6.42	0.01%	4-Heptanone	Aliphatic Ketone
3	8.14	0.09%	Tricyclene	Monoterpene
4	8.56	0.16%	alpha-Pinene	Monoterpene
5	9.18	0.79%	Camphene	Monoterpene
6	10.15	0.02%	Sabinene	Monoterpene
7	10.67	1.31%	6-Methyl-5-hepten-2-one	Aliphatic Ketone
8	10.90	0.09%	Myrcene	Monoterpene
9	11.49	0.06%	Octanal	Aliphatic Aldehyde
10	12.37	0.01%	meta-Cymene	Monoterpene
11	12.59	2.10%	Limonene	Monoterpene
12	12.96	0.18%	(Z)-beta-Ocimene	Monoterpene
13	13.43	0.14%	(E)-beta-Ocimene	Monoterpene
14	13.70	0.01%	Bergamal	Aliphatic Aldehyde
15	14.47	0.01%	cis-Linalool oxide (5) (furanoid)	Monoterpenol
16	14.56	0.96%	4-Nonanone	Aliphatic Ketone
17	15.15	0.04%	Terpinolene	Monoterpene
18	15.22	0.01%	trans-Linalool oxide (5) (furanoid)	Monoterpenol
19	15.78	0.04%	Perillene	Monoterpene Ether
20	15.86	0.99%	Linalool	Monoterpenol
21	15.99	0.10%	alpha-Pinene oxide	Monoterpene Ether
22	17.18	0.03%	Alloocimene	Monoterpene
23	17.86	0.05%	exo-Isocitral	Monoterpene Aldehyde
24	18.03	0.23%	trans-Chrysanthemal	Monoterpene Aldehyde
25	18.28	0.22%	Citronellal	Monoterpene Aldehyde
26	18.71	0.23%	(Z)-isocitral	Monoterpene Aldehyde
27	19.08	0.36%	Borneol	Monoterpenol
28	19.58	0.55%	(E)-Isocitral	Monoterpene Aldehyde
29	20.20	0.20%	alpha-Terpineol	Monoterpenol
30	20.43	0.02%	cis-Piperitol	Monoterpenol
31	20.79	0.13%	Decanal	Aliphatic Aldehyde
32	21.25	0.06%	trans-Carveol	Monoterpenol
33	21.63	0.13%	Nerol	Monoterpenol
34	21.82	0.11%	Citronellol	Monoterpenol
35	22.32	32.41%	Neral	Monoterpene Aldehyde

ESSENTIAL VALIDATION SERVICES | 747 SW 2ND AVE GAINESVILLE, FLORIDA 32601 | 317-361-5044

- Essential Oil testing is performed by using qualitative GC-MS. Method: SOP.T.01 Client Method
 - This report may not be published without the consent of Essential Validation Services.
 - Chromatograph image may be requested
 - This report is valid for 1 year from the analyzed date

Client



Source

Lemongrass (*Cymbopogon flexuosus*)

GU-59038

Number	RT	Area %	Compound Name	Chemical Family
36	22.877	6.39%	Geraniol	Monoterpene Aldehyde
37	23.71	41.80%	Geranial	Monoterpene Aldehyde
38	24.28	0.01%	Bornyl acetate	Monoterpene Ester
39	24.95	0.01%	Geranyl formate	Monoterpene Ester
40	25.95	0.01%	Methyl geranate	Monoterpene Ester
41	27.21	0.01%	Citronellyl acetate	Monoterpene Ester
42	27.57	0.04%	Neryl acetate	Monoterpene Ester
43	27.87	0.06%	alpha-Longipinene	Sesquiterpene
44	27.93	0.11%	alpha-Ylangene	Sesquiterpene
45	28.23	0.03%	alpha-Copaene	Sesquiterpene
46	28.45	3.80%	Geranyl acetate	Monoterpene Ester
47	28.76	0.03%	beta-Cubebene	Sesquiterpene
48	28.84	0.15%	beta-Elemene	Sesquiterpene
49	29.78	0.02%	Dodecanal	Aliphatic Aldehyde
50	30.03	1.56%	cis-Caryophyllene	Sesquiterpene
51	30.50	0.05%	gamma-Elemene	Sesquiterpene
52	30.69	0.01%	trans-alpha-Bergamotene	Sesquiterpene
53	31.18	0.10%	(E)-Isoeugenol	Phenylpropanoid
54	31.50	0.17%	alpha-Humulene	Sesquiterpene
55	31.78	0.01%	cis-Muurolo-3,5-diene	Sesquiterpene
56	32.25	0.01%	trans-Cadina-1(6),4-diene	Sesquiterpene
57	32.56	0.13%	gamma-Muuroloene	Sesquiterpene
58	33.17	0.10%	epi-Cubebol	Sesquiterpenol
59	33.33	0.02%	alpha-Muuroloene	Sesquiterpene
60	33.88	0.90%	gamma-Cadinene	Sesquiterpene
61	33.95	0.21%	Cubebol	Sesquiterpenol
62	34.12	0.20%	beta-Cadinene	Sesquiterpene
63	34.47	0.13%	trans-gamma-Bisabolene	Sesquiterpene
64	34.65	0.02%	trans-Cadina-1,4-diene	Sesquiterpene
65	34.82	0.03%	alpha-Cadinene	Sesquiterpene
66	35.26	0.07%	Elemol	Sesquiterpenol
67	35.67	0.09%	Geranyl butyrate	Monoterpene Ester
68	36.49	0.37%	Caryophyllene oxide	Sesquiterpene Ether
69	37.55	0.03%	Humulene epoxide II	Sesquiterpene Ether
70	37.82	0.01%	Viridiflorol	Sesquiterpenol
71	38.29	0.02%	1-epi-Cubenol	Sesquiterpenol

ESSENTIAL VALIDATION SERVICES | 747 SW 2ND AVE GAINESVILLE, FLORIDA 32601 | 317-361-5044

- Essential Oil testing is performed by using qualitative GC-MS. Method: SOP.T.01 Client Method
 - This report may not be published without the consent of Essential Validation Services.
 - Chromatograph image may be requested
 - This report is valid for 1 year from the analyzed date

