



316 Old Hickory Blvd East, Madison, TN 37115

tel (615)612-4270 fax (615)860-9171

sold@naturesgift.com

Healing Body, Mind and Spirit with Pure Essential Oils

Since 1995

www.naturesgift.com

Lemongrass

Cymbopogon flexuosus

Guatemala

Batch #GU-58908

Monoterpenes	4.61%
limonene	2.65
camphene	0.87
(Z)- β ocimene	0.23
α pinene	0.17
(E)- β ocimene	0.15
allo ocimene	0.13
myrcene	0.12
α pinene epoxide	0.11
tricyclene	0.10
terpinolene	0.07
sabinene	0.01

Monoterpenols	9.5%
geraniol	7.93
linalol	1.13
citronellol	0.25
borneol	0.19

Ketones	2.15%
methyl-6-hepten-5-one-2	1.08
4-nonanone	1.07

Phenols	0.39%
(E) isoeugenol	0.39

Aldehydes	71.78%
geranial	37.72
neral	30.83
(E) isocitral	1.37
(Z) isocitral	0.77
trans-chrysanthemal	0.27
citronellal	0.24
α terpineol	0.20
decanal	0.18
exo-isocitral	0.13
octanal	0.07

Sesquiterpenes	4.07%
β carophyllene	1.53
γ cadinene	1.30
δ cadinene	0.26
trans- γ -bisabolene	0.21
β elemene	0.19
α ylangene	0.17
α humulene	0.16
α cadinene	0.14
epi-cubebol	0.11

Ethers	0.54%
caryophyllene oxyde	0.39
rose furan epoxide	0.15

Esters	5.18%
geranyl acetate	5.18

Raw Material: grass

INCI Name: CYMBOPOGON CITRATUS LEAF OIL

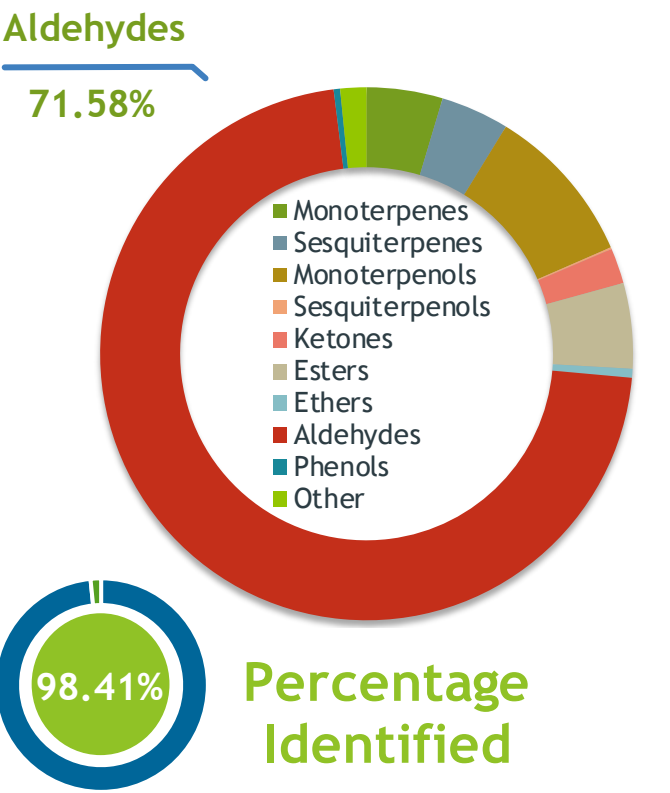
Production Method: Steam distillation

Date of Analysis: J4/19/2019

Client  **Source** 

Lemongrass (*Cymbopogon flexuosus*)
GU-58908

Sample Lemongrass (*Cymbopogon flexuosus*)
Batch #:..... | GU-58908
Type:..... | Essential Oil
CAS Number:... | 91844-92-7
Nature's Gift



Client  **Website** 

Primary
37.72% Geranial
30.83% Neral
7.93% Geraniol

Result 

Conclusion
No adulterants, diluents, or contaminants were detected via this method. This oil meets the expected profile for genuine essential oil of Lemongrass (*Cymbopogon flexuosus*)
Internal Number: | EVS-2853


Essential Validation Services
747 SW 2nd Ave IMB 12 Suite 306
Gainesville, FL 32601
317.361.5044 | <https://essentialvalidationservices.com/>
adam@essentialvalidationservices.com


Monoterpenes	4.61%
Sesquiterpenes	4.15%
Monoterpenols	9.70%
Sesquiterpenols	0.11%
Ketones	2.15%
Esters	5.18%
Ethers	0.54%
Aldehydes	71.58%
Phenols	0.39%
Other	1.59%

ESSENTIAL VALIDATION SERVICES | 747 SW 2ND AVE GAINESVILLE, FLORIDA 32601 | 317-361-5044

Client



Source



Lemongrass (*Cymbopogon flexuosus*)
GU-58908

Total Percentage		98.41%			
Number	RT	Area %	Compound Name	RI	Chemical Family
1	12.39	0.10%	Tricyclene	923.00	Monoterpene
2	12.89	0.17%	alpha-Pinene	936.10	Monoterpene
3	13.51	0.87%	Camphene	950.30	Monoterpene
4	14.58	0.01%	Sabinene	973.00	Monoterpene
5	15.10	1.08%	6-Methyl-5-hepten-2-one	982.00	Aliphatic Ketone
6	15.29	0.12%	Myrcene	989.20	Monoterpene
7	15.77	0.07%	Octanal	998.00	Aliphatic Aldehyde
8	16.88	2.65%	Limonene	1029.50	Monoterpene
9	17.24	0.23%	(Z)-beta-Ocimene	1037.80	Monoterpene
10	17.67	0.15%	(E)-beta-Ocimene	1047.70	Monoterpene
11	18.65	1.07%	4-Nonanone	1073.00	Aliphatic Ketone
12	19.34	0.07%	Terpinolene	1092.10	Monoterpene
13	19.76	1.13%	Linalool	1099.00	Monoterpenol
14	19.99	0.11%	alpha-Pinene epoxide	1107.10	Monoterpene
15	21.36	0.13%	Alloocimene	1129.90	Monoterpene
16	21.52	0.13%	exo-Isocitral	1143.00	Monoterpene Aldehyde
17	21.76	0.27%	trans-Chrysanthemal	1152.00	Monoterpene Aldehyde
18	21.83	0.24%	Citronellal	1154.50	Monoterpene Aldehyde
19	22.26	0.77%	(Z)-Isocitral	1163.50	Monoterpene Aldehyde
20	22.43	0.19%	Borneol	1168.71	Monoterpenol
21	22.68	0.15%	Rose furan epoxide	1174.25	Monoterpene Ether
22	22.94	1.37%	(E)-Isocitral	1183.57	Monoterpene Aldehyde
23	23.34	0.20%	alpha-Terpineol	1191.71	Monoterpenol
24	23.78	0.18%	Decanal	1206.57	Aliphatic Aldehyde
25	24.68	0.25%	Citronellol	1229.25	Monoterpenol
26	25.24	30.83%	Neral	1246.57	Monoterpene Aldehyde
27	25.65	7.93%	Geraniol	1255.29	Monoterpenol
28	26.31	37.72%	Geranial	1272.00	Monoterpene Aldehyde
29	29.67	0.17%	alpha-Ylangene	1371.33	Sesquiterpene
30	29.93	5.18%	Geranyl acetate	1379.20	Monoterpene Ester
31	30.40	0.19%	beta-Elementene	1389.20	Sesquiterpene
32	31.39	1.53%	beta-Caryophyllene	1427.14	Sesquiterpene
33	32.16	0.39%	(E)-Isoeugenol	1460.00	Phenylpropanoid
34	32.47	0.16%	alpha-Humulene	1461.43	Sesquiterpene
35	33.32	0.19%	Germacrene D	1484.71	Sesquiterpene

ESSENTIAL VALIDATION SERVICES | 747 SW 2ND AVE GAINESVILLE, FLORIDA 32601 | 317-361-5044

Client



Source



Lemongrass (*Cymbopogon flexuosus*)
GU-58908

Number	RT	Area %	Compound Name	RI	Chemical Family
36	33.7	0.11%	epi-Cubebol	1493.67	Sesquiterpene
37	34.30	1.30%	gamma-Cadinene	1515.29	Sesquiterpene
38	34.52	0.26%	delta-Cadinene	1524.14	Sesquiterpene
39	34.72	0.21%	trans-gamma-Bisabolene	1535.65	Sesquiterpene
40	35.40	0.14%	alpha-Cadinene	1537.86	Sesquiterpene
41	36.43	0.39%	Caryophyllene oxide	1594.86	Sesquiterpene Ether

ESSENTIAL VALIDATION SERVICES | 747 SW 2ND AVE GAINESVILLE, FLORIDA 32601 | 317-361-5044