

Sample:

Client: | Nature's Gift
Sample: | Lavender Mailette (Lavandula angustifolia)
Batch # | FR-58655
CAS Number | 8000-28-0
Type: | Essential Oil

Conclusion:

- No adulterants, diluents, or contaminants were detected via this method.
- This oil meets the expected profile for genuine essential oil of Lavender (Lavandula angustifolia).



X 

Validated By:

Essential Validation Services

747 SW 2nd Ave, Gainesville, FL 32601

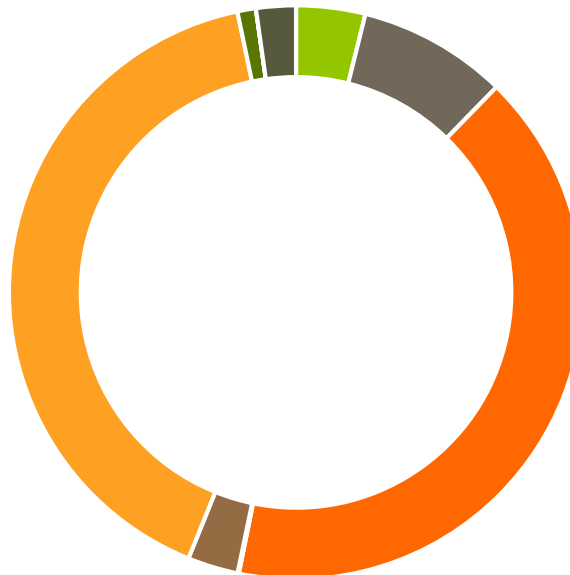
Phone: 317-361-5044 E-mail: Adam@essentialvalidationservices.com

Summary of Analyses

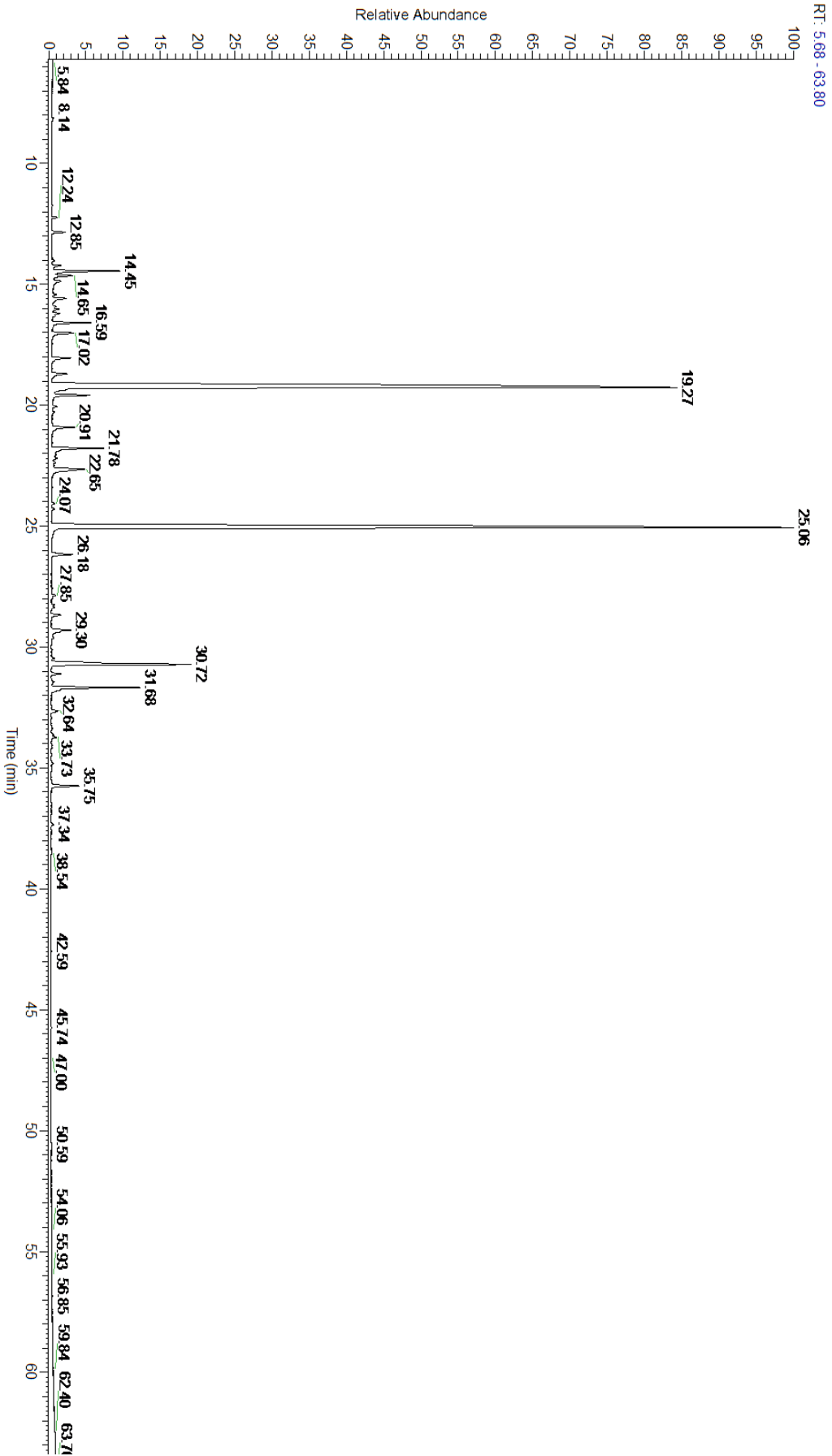
A fresh sample of Lavender (Lavandula angustifolia) Essential Oil (10 uL in .5to.5 mL Hexane + ETOH) was prepared and analyzed via split injection GC/EI-MS.

Main Compounds	Percentages
Linalool	37.63%
Linalyl acetate	35.37%
beta-Caryophyllene	5.09%
(Z)-beta-Farnesene	2.45%
Octan-3-one	2.06%
Borneol (Co-Eluting)	1.81%
Hexyl butyrate (Co-Eluting)	1.53%
(Z)-beta-Ocimene	1.13%
1-Octenyl-3 acetate	1.03%
Caryophyllene oxide	0.89%
Geranyl acetate	0.85%
Camphor	0.79%
(E)-beta-Ocimene	0.71%

Monoterpenes	Sesquiterpenes	Monoterpenols	Sesquiterpenols	Ketones
3.89%	8.42%	40.89%	0.07%	2.85%
Esters	Ethers	Aldehydes	Phenols	Other
40.60%	1.04%	0.00%	0.00%	2.24%



- Monoterpenes
- Sesquiterpenes
- Monoterpenols
- Sesquiterpenols
- Ketones
- Esters
- Ethers
- Phenols
- Other



Total Percentage		98.51%			
Peak Number	RT	Area %	Compound Name	RI	Chemical Family
1	8.14	0.05%	Methyl hexyl ether	822.00	Aliphatic Ether
2	11.74	0.03%	Tricyclene	923.00	Monoterpene
3	12.24	0.14%	alpha-Pinene	936.10	Monoterpene
4	12.85	0.37%	Camphene	950.30	Monoterpene
5	13.91	0.01%	Sabinene	973.00	Monoterpene
6	14.02	0.08%	beta-Pinene	974.00	Monoterpene
7	14.23	0.31%	1-Octen-3-ol	980.00	Aliphatic Alcohol
8	14.45	2.06%	Octan-3-one	981.00	Aliphatic Ketone
9	14.65	0.70%	Myrcene	989.20	Monoterpene
10	14.88	0.44%	3-Octanol	992.00	Aliphatic Alcohol
11	15.43	0.09%	delta-3-Carene	1008.00	Monoterpene
12	15.59	0.51%	Hexyl acetate	1009.00	Aliphatic Ester
13	15.92	0.12%	meta-Cymene	1022.00	Monoterpene
14	16.03	0.22%	para-Cymene	1024.30	Monoterpene
15	16.21	0.23%	Limonene	1029.50	Monoterpene
16	16.30	0.10%	1,8-Cineole	1031.80	Monoterpene Ether
17	16.59	1.13%	(Z)-beta-Ocimene	1037.80	Monoterpene
18	17.02	0.71%	(E)-beta-Ocimene	1047.70	Monoterpene
19	18.05	0.67%	cis-Linalool oxide (5) (furanoid)	1075.10	Monoterpenol
20	18.70	0.57%	trans-Linalool oxide (5) (furanoid)	1092.20	Monoterpenol
21	19.27	37.63%	Linalool	1099.00	Monoterpenol
22	19.58	1.03%	1-Octenyl-3 acetate	1107.00	Monoterpene Ester
23	20.06	0.12%	Octan-3-yl acetate	1124.00	Aliphatic Ester
24	20.28	0.06%	Alloocimene	1129.90	Monoterpene
25	20.91	0.79%	Camphor	1147.55	Monoterpene Ketone
26	21.78	1.81%	Borneol	1168.71	Monoterpenol
27	21.79	Co-Eluting	Lavandulol	1161.50	Monoterpenol
28	22.20	0.14%	Terpinen-4-ol	1180.57	Monoterpenol
29	22.37	0.07%	para-Cymen-8-ol	1185.25	Monoterpenol
30	22.65	1.53%	Hexyl butyrate	1186.80	Aliphatic Ester
31	22.66	Co-Eluting	alpha-Terpineol	1191.71	Monoterpenol
32	24.07	0.08%	Hexyl isovalerate	1242.00	Monoterpene Ester
33	25.06	35.37%	Linalyl acetate	1263.80	Monoterpene Ester
34	26.18	0.67%	Lavandulyl acetate	1285.00	Monoterpene Ester
35	27.85	0.13%	Hexyl tiglate	1331.00	Monoterpene Ester
36	28.35	0.09%	alpha-Cubebene	1355.71	Sesquiterpene
37	28.67	0.31%	Neryl acetate	1362.90	Monoterpene Ester
38	29.30	0.85%	Geranyl acetate	1379.20	Monoterpene Ester
39	30.47	0.09%	alpha-Santalene	1426.50	Sesquiterpene
40	30.72	5.09%	beta-Caryophyllene	1427.14	Sesquiterpene
41	31.68	2.45%	(Z)-beta-Farnesene	1453.40	Sesquiterpene
42	31.78	0.22%	alpha-Humulene	1461.43	Sesquiterpene
43	32.64	0.25%	Germacrene D	1484.71	Sesquiterpene

