



316 Old Hickory Blvd East, Madison, TN 37115

tel (615)612-4270 fax (615)860-9171

orderdesk@naturesgift.com

Healing Body, Mind and Spirit with Pure Essential Oils

Since 1995

www.naturesgift.com

Lavender CO₂

Lavandula angustifolia

Batch No. #BU-58949

Bulgaria

Monoterpenes	8.03%	Esters	51.34%	Sesquiterpenes	10.09%
cis- β -ocimene	3.21	linalyl acetate	44.84	β caryophyllene	4.66
trans- β ocimene	1.99	lavandulyl acetate	4.28	(Z) β farnesene	4.51
limonene	0.76	1-octenyl-3 acetate	1.03	germacrene D	0.73
allo-ocimene	0.74	geranyl acetate	0.34	α -trans-bergamotene	0.12
myrcene	0.69	Hexyl acetate	0.28	δ cadinene	0.07
α pinene	0.14	neryl acetate	0.23		
camphene	0.1	octan-3-yl acetate	0.2		
terpinolene	0.09	hexyl butyrate	0.14		
Δ 3 carene	0.09				
para cymene	0.06	Ethers	0.73%	Sesquiterpenols	0.12%
α thujene	0.05	1,8 cineole (also known as an Ether)	0.40	t-cadinol	0.12
γ terpinene	0.04	caryophyllene oxide	0.33		
sabinene	0.03	humulene epoxide			
β pinene	0.03				
tricyclene	0.01				
		Ketones	1.78%		
Monoterpenols	26.48%	3-octanone	1.36		
linalol	22.64	camphor	0.12		
terpinene-4-ol	2.4	cryptone	0.30		
borneol + lavandulol	1.17				
τ cadinol	0.12	Other	0.46%		
trans-linaloloxide	0.08	3-octanol	0.26		
linalool cis-oxide	0.07	1-octen-3-ol	0.20		

Raw Material: Bulgarian Lavender

INCI Name: Lavandula angustifolia

Production Method: CO₂ extraction., flowering tops

Date of analysis: 7/16/2019

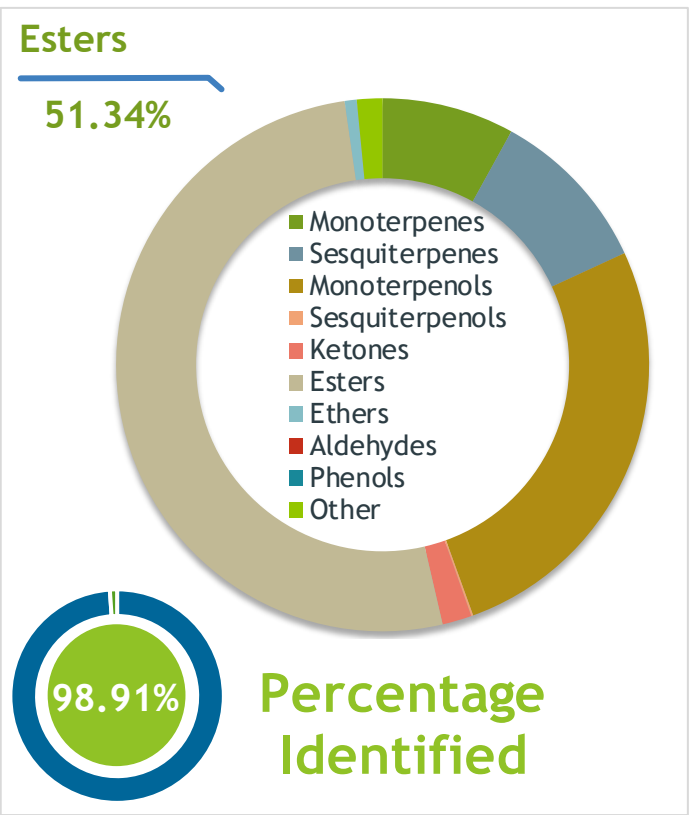
Client  **Source** 

Lavender CO2 Extract (*Lavandula angustifolia*)
BU-58949

Sample Lavender CO2 Extract (*Lavandula*)
Batch #:..... BU-58949
Type:..... CO2 Oil
CAS Number:... 8000-28-0
Nature's Gift

Client  **Website** 

Primary
44.84% | Linalyl acetate
22.64% | Linalool
4.66% | beta-Caryophyllene



Result 

Conclusion No adulterants, Diluents, or contaminants were detected via this method. This oil meets the expected profile for genuine CO2 Oil of Lavender CO2 Extract (*Lavandula angustifolia*)
Internal Number: | EVS-3098


Essential Validation Services
747 SW 2nd Ave IMB 12 Suite 306
Gainesville, FL 32601
317.361.5044 |
<https://essentialvalidation.com/>
adam@essentialvalidation.com


Monoterpenes	8.0	8.03%
Sesquiterpenes	10.0	10.09%
Monoterpenols	26.36%	26.36%
Sesquiterpenols		0.12%
Ketones		1.78%
Esters	51.34%	51.34%
Ethers		0.73%
Aldehydes		0.00%
Phenols		0.00%
Other		1.55%

ESSENTIAL VALIDATION SERVICES | 747 SW 2ND AVE GAINESVILLE, FLORIDA 32601 | 317-361-5044

Client



Source



Lavender CO2 Extract (*Lavandula angustifolia*)
BU-58949

Total Percentage		98.91%			
Number	RT	Area %	Compound Name	RI	Chemical Family
1	11.59	0.01%	Tricyclene	923.00	Monoterpene
2	11.83	0.05%	alpha-Thujene	927.80	Monoterpene
3	12.08	0.14%	alpha-Pinene	936.10	Monoterpene
4	12.67	0.10%	Camphene	950.30	Monoterpene
5	13.73	0.03%	Sabinene	973.00	Monoterpene
6	13.83	0.03%	beta-Pinene	974.00	Monoterpene
7	14.00	0.20%	1-Octen-3-ol	980.00	Aliphatic Alcohol
8	14.24	1.36%	Octan-3-one	981.00	Aliphatic Ketone
9	14.46	0.69%	Myrcene	989.20	Monoterpene
10	14.66	0.26%	3-Octanol	992.00	Aliphatic Alcohol
11	15.23	0.09%	delta-3-Carene	1008.00	Monoterpene
12	15.37	0.28%	Hexyl acetate	1009.00	Aliphatic Ester
13	15.81	0.06%	para-Cymene	1024.30	Monoterpene
14	16.00	0.76%	Limonene	1029.50	Monoterpene
15	16.06	0.40%	1,8-Cineole	1031.80	Monoterpene Ether
16	16.38	3.21%	(Z)-beta-Ocimene	1037.80	Monoterpene
17	16.80	1.99%	(E)-beta-Ocimene	1047.70	Monoterpene
18	17.24	0.04%	gamma-Terpinene	1054.00	Monoterpene
19	17.58	0.07%	cis-Linalool oxide (5) (furanoid)	1075.10	Monoterpenol
20	17.79	0.09%	Terpinolene	1092.10	Monoterpene
21	18.43	0.08%	trans-Linalool oxide (5) (furanoid)	1092.20	Monoterpenol
22	18.98	22.64%	Linalool	1099.00	Monoterpenol
23	19.33	1.03%	1-Octenyl-3 acetate	1107.00	Monoterpene Ester
24	19.81	0.20%	Octan-3-yl acetate	1124.00	Aliphatic Ester
25	20.03	0.74%	Alloocimene	1129.90	Monoterpene
26	20.63	0.12%	Camphor	1147.55	Monoterpene Ketone
27	21.48	1.17%	Borneol	1168.71	Monoterpenol
28	21.50	Co-Eluting	Lavandulol	1161.50	Monoterpenol
29	21.90	2.40%	Terpinen-4-ol	1180.57	Monoterpenol
30	22.22	0.14%	Hexyl butyrate	1186.80	Aliphatic Ester
31	22.39	0.30%	Cryptone	1187.33	Monoterpene Ketone
32	24.80	44.84%	Linalyl acetate	1263.80	Monoterpene Ester
33	25.89	4.28%	Lavandulyl acetate	1285.00	Monoterpene Ester
34	28.37	0.23%	Neryl acetate	1362.90	Monoterpene Ester
35	28.99	0.34%	Geranyl acetate	1379.20	Monoterpene Ester

ESSENTIAL VALIDATION SERVICES | 747 SW 2ND AVE GAINESVILLE, FLORIDA 32601 | 317-361-5044

