



## Lavender Avice Hill Lavandula angustifolia

Batch No. #US-58993  
 United States

### Monoterpenes 7.24%

(Z)- $\beta$ -ocimene	3.25
(E)- $\beta$ -ocimene	2.01
myrcene	0.70
allo-ocimene	0.65
limonene	0.17
terpinolene	0.13
para cymene	0.06
$\alpha$ pinene	0.05
$\beta$ pinene	0.05
$\gamma$ terpinene	0.04
$\delta$ -3-carene	0.04
ortho-cymene	0.03
camphene	0.02
$\alpha$ terpinene	0.02
$\alpha$ thujene	0.01
pseudolimonene	0.01

### Esters 41.07%

linalyl acetate	26.28
lavandulyl acetate	9.58
1-octenyl-3 acetate	1.98
geranyl acetate	1.53
neryl acetate	0.84
hexyl acetate	0.51
butyl-butyrate	0.13
Octan-3-yl acetate	0.13
isopulegyl acetate	0.05
hexyl isobutyrate	0.04
butyl acetate	0.04
hexyl tiglate	0.04
hexyl propanoate	0.03
octyl acetate	0.02
bornyl formate	0.02
hexyl 2-methyl butanoate	0.02

### Sesquiterpenes 10.11%

$\beta$ caryophyllene	5.59
(Z) $\beta$ farnesene	3.07
$\gamma$ cadinene	0.52
germacrene D	0.45
$\alpha$ -trans-bergamotene	0.14
7-epi-sesquithujene	0.11
(E) $\beta$ farnesene	0.07
$\beta$ copaene	0.07
$\alpha$ -cis-bergamotene	0.05
cis-muurolo-4(14),5-diene	0.04
sesquithujene	0.03
$\beta$ bisabolene	0.03
epi- $\beta$ -santalene	0.02
germacrene A	0.02

### Monoterpenols 38.33%

linalol	31.85
$\alpha$ terpineol	2.58
lavandulol	1.52
terpinen-4-ol	1.21
borneol	0.52
nerol	0.41
cis-linalool oxide	0.13
hotrienol	0.06
trans-linalool oxide	0.05

### Ethers 0.82%

1,8 cineole	0.41
caryophyllene oxide	0.38
methyl hexyl ether	0.03

### Sesquiterpenols 0.8%

t-cadinol	0.73
1, 10 di-epi cubenol	0.07

### Ketones 0.59%

octan-3-one	0.50
camphor	0.09

### Other 0.46%

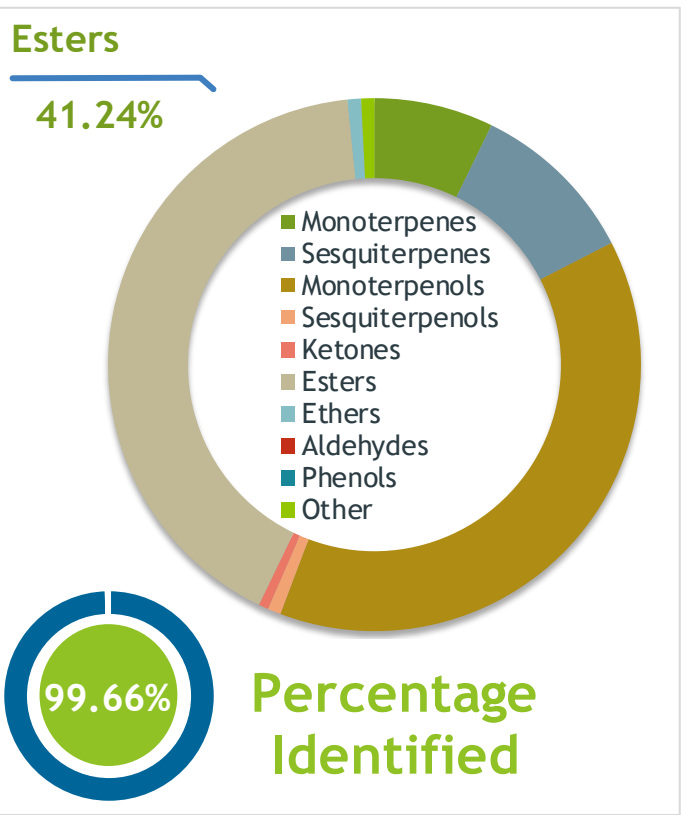
1-octan-3-ol	0.33
1 hexanol	0.03
3-octanol	0.1

Raw Material: Lavender Avice Hill  
 INCI Name: Lavandula angustifolia  
 Production Method: Steam Dist., flowering tops  
 Date of analysis: 10/03/2019

**Client**  **Source** 

Lavender Avice Hill (*Lavandula angustifolia*)  
US-58993

**Sample** Lavender Avice Hill (*Lavandula angustifolia*)  
Batch #:..... US-58993  
Type:..... Essential Oil  
CAS Number:... 8000-28-0  
**Nature's Gift**



**Client**  **Website** 

**Primary**

<b>31.85%</b>	<b>Linalool</b>
<b>26.28%</b>	<b>Linalyl acetate</b>
<b>9.58%</b>	<b>Lavandulyl acetate</b>

**Result** 

**Conclusion** No adulterants, Diluents, or contaminants were detected via this method. This oil meets the expected profile for genuine Essential Oil of Lavender Avice Hill (*Lavandula angustifolia*)

Internal Number: | EVS-3295

  
**Essential Validation Services**  
747 SW 2nd Ave IMB 12 Suite 306  
Gainesville, FL 32601  
317.361.5044 |  
<https://essentialvalidation.com/>  
adam@essentialvalidation.com  


Monoterpenes	7.24%	7.24%
Sesquiterpenes	10.21%	10.21%
Monoterpenols	38.30%	38.30%
Sesquiterpenols	0.80%	0.80%
Ketones	0.59%	0.59%
Esters	41.24%	41.24%
Ethers	0.82%	0.82%
Aldehydes	0.00%	0.00%
Phenols	0.00%	0.00%
Other	0.80%	0.80%

ESSENTIAL VALIDATION SERVICES | 747 SW 2<sup>ND</sup> AVE GAINESVILLE, FLORIDA 32601 | 317-361-5044

Client



Source

Lavender Avice Hill (*Lavandula angustifolia*)

US-58993

Total Percentage		99.66%		
Number	RT	Area %	Compound Name	Chemical Family
1	5.03	0.04%	Butyl acetate	Aliphatic Ester
2	5.37	0.03%	Methyl hexyl ether	Aliphatic Ether
3	6.66	0.03%	1-Hexanol	Aliphatic Alcohol
4	8.69	0.01%	alpha-Thujene	Monoterpene
5	8.96	0.05%	alpha-Pinene	Monoterpene
6	9.60	0.02%	Camphene	Monoterpene
7	10.75	0.05%	beta-Pinene	Monoterpene
8	10.92	0.33%	1-Octen-3-ol	Aliphatic Alcohol
9	11.13	0.50%	Octan-3-one	Aliphatic Ketone
10	11.33	0.70%	Myrcene	Monoterpene
11	11.62	0.13%	Butyl butyrate	Aliphatic Ester
12	11.66	0.10%	3-Octanol	Aliphatic Alcohol
13	12.01	0.01%	Pseudolimonene	Monoterpene
14	12.12	0.04%	delta-3-Carene	Monoterpene
15	12.34	0.51%	Hexyl acetate	Aliphatic Ester
16	12.62	0.03%	ortho-Cymene	Monoterpene
17	12.83	0.06%	para-Cymene	Monoterpene
18	12.91	0.02%	alpha-Terpinene	Monoterpene
19	13.05	0.17%	Limonene	Monoterpene
20	13.15	0.41%	1,8-Cineole	Monoterpene Ether
21	13.43	3.25%	(Z)-beta-Ocimene	Monoterpene
22	13.90	2.01%	(E)-beta-Ocimene	Monoterpene
23	14.39	0.04%	gamma-Terpinene	Monoterpene
24	14.95	0.10%	cis-Linalool oxide (5) (furanoid)	Monoterpenol
25	15.64	0.13%	Terpinolene	Monoterpene
26	15.70	0.05%	trans-Linalool oxide (5) (furanoid)	Monoterpenol
27	16.52	31.85%	Linalool	Monoterpenol
28	16.58	0.06%	Hotrienol	Monoterpenol
29	16.65	0.03%	Hexyl propanoate	Monoterpene Ester
30	16.79	1.98%	1-Octenyl-3 acetate	Monoterpene Ester
31	17.33	0.13%	Octan-3-yl acetate	Aliphatic Ester
32	17.68	0.65%	Alloocimene	Monoterpene
33	18.41	0.09%	Camphor	Monoterpene Ketone
34	18.61	0.04%	Hexyl isobutyrate	Monoterpene Ester
35	19.33	1.52%	Lavandulol	Monoterpenol

ESSENTIAL VALIDATION SERVICES | 747 SW 2<sup>ND</sup> AVE GAINESVILLE, FLORIDA 32601 | 317-361-5044

Client



Source



Lavender Avice Hill (*Lavandula angustifolia*)  
US-58993

Number	RT	Area %	Compound Name	Chemical Family
36	19.602	0.52%	Borneol	Monoterpenol
37	20.03	1.21%	Terpinen-4-ol	Monoterpenol
38	20.72	2.58%	alpha-Terpineol	Monoterpenol
39	21.54	0.02%	Octyl acetate	Aliphatic Ester
40	22.12	0.41%	Nerol	Monoterpenol
41	22.22	0.02%	Bornyl formate	Monoterpene Ester
42	22.68	0.02%	Hexyl 2-methyl butanoate	Monoterpene Ester
43	23.42	26.28%	Linalyl acetate	Monoterpene Ester
44	24.32	0.05%	Isopulegyl acetate	Monoterpene Ester
45	24.89	9.58%	Lavandulyl acetate	Monoterpene Ester
46	26.83	0.04%	Hexyl tiglate	Monoterpene Ester
47	28.10	0.84%	Neryl acetate	Monoterpene Ester
48	28.95	1.53%	Geranyl acetate	Monoterpene Ester
49	29.32	0.11%	7-epi-Sesquithujene	Sesquiterpene
50	29.98	0.03%	Sesquithujene	Sesquiterpene
51	30.39	0.05%	cis-alpha-Bergamotene	Sesquiterpene
52	30.60	5.59%	beta-Caryophyllene	Sesquiterpene
53	31.21	0.14%	trans-alpha-Bergamotene	Sesquiterpene
54	31.66	0.07%	beta-Copaene	Sesquiterpene
55	31.77	0.02%	epi-beta-Santalene	Sesquiterpene
56	32.09	3.07%	(Z)-beta-Farnesene	Sesquiterpene
57	32.20	0.07%	(E)-beta-Farnesene	Sesquiterpene
58	32.34	0.04%	cis-Muurolo-4(14),5-diene	Sesquiterpene
59	33.11	0.45%	Germacrene D	Sesquiterpene
60	34.01	0.02%	Germacrene A	Sesquiterpene
61	34.27	0.03%	beta-Bisabolene	Sesquiterpene
62	34.41	0.52%	gamma-Cadinene	Sesquiterpene
63	37.03	0.38%	Caryophyllene oxide	Sesquiterpene Ether
64	38.34	0.07%	1,10-di-epi-Cubenol	Sesquiterpenol
65	39.35	0.73%	T-Cadinol	Sesquiterpenol

ESSENTIAL VALIDATION SERVICES | 747 SW 2<sup>ND</sup> AVE GAINESVILLE, FLORIDA 32601 | 317-361-5044