

Sample:

Client: | Nature's Gift
Sample: | Lavender Wild Hi-Alt (Lavandula angustifolia)
Batch # | FR-58686
CAS Number | 8000-28-0
Type: | Essential Oil

Conclusion:

- No adulterants, diluents, or contaminants were detected via this method.
- This oil meets the expected profile for genuine essential oil of Lavender (Lavandula angustifolia).



X 

Validated By:

Essential Validation Services

747 SW 2nd Ave, Gainesville, FL 32601

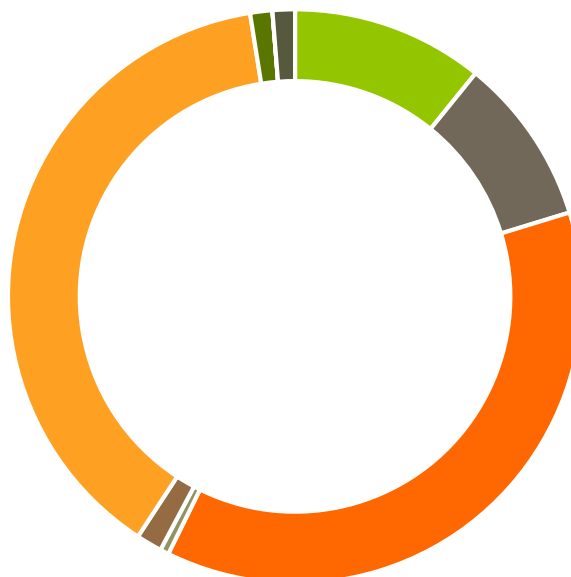
Phone: 317-361-5044 E-mail: Adam@essentialvalidationservices.com

Summary of Analyses

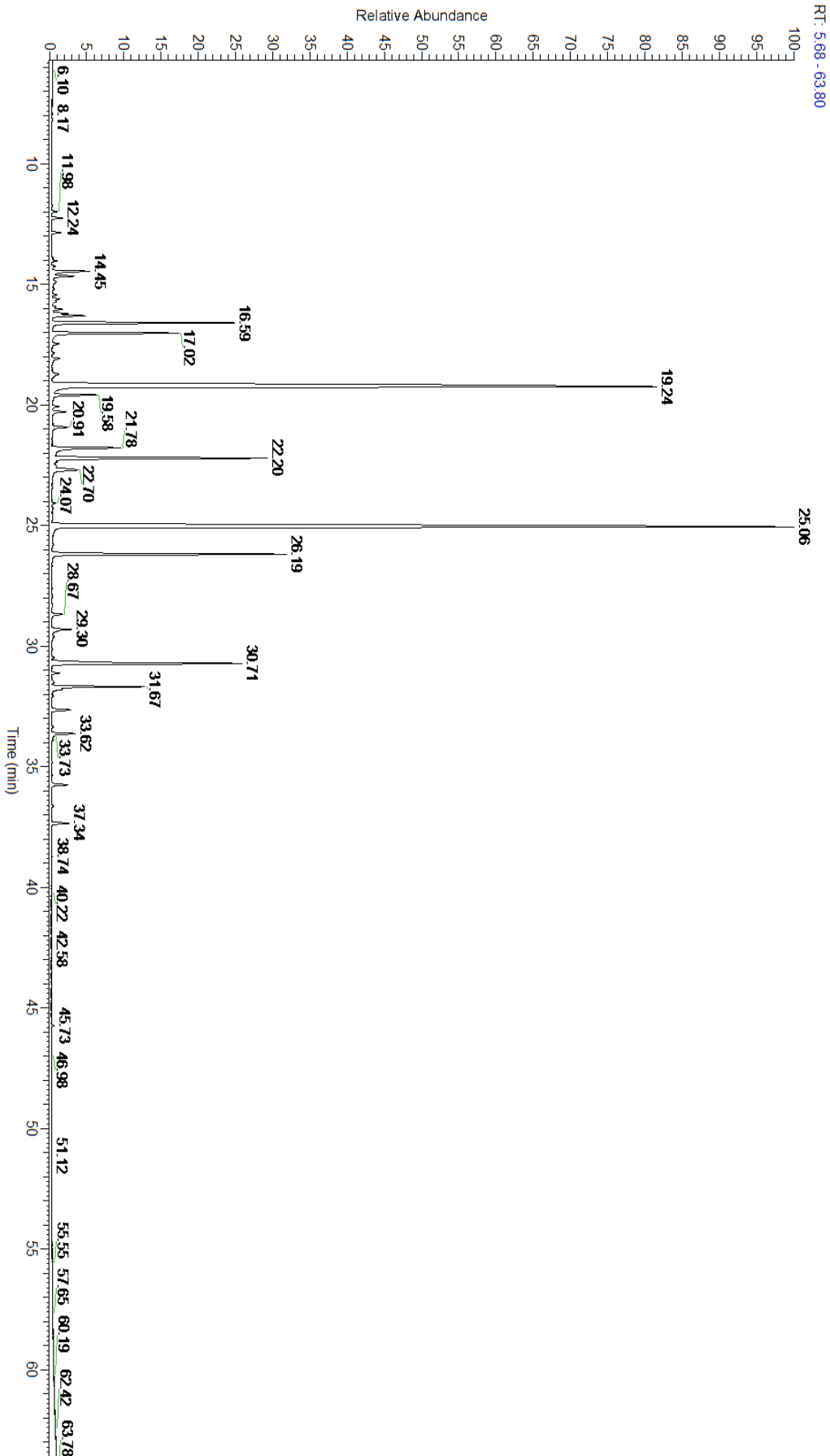
A fresh sample of Lavender (Lavandula angustifolia) Essential Oil (10 uL in .5to.5 mL Hexane + ETOH) was prepared and analyzed via split injection GC/EI-MS.

| Main Compounds | Percentages |
|----------------------|-------------|
| Linalyl acetate | 29.71% |
| Linalool | 27.69% |
| Terpinen-4-ol | 5.76% |
| Lavandulyl acetate | 5.74% |
| beta-Caryophyllene | 5.44% |
| (Z)-beta-Ocimene | 4.48% |
| (E)-beta-Ocimene | 3.20% |
| (Z)-beta-Farnesene | 2.19% |
| Borneol (Co-Eluting) | 2.11% |
| 1-Octenyl-3 acetate | 1.12% |
| alpha-Terpineol | 1.06% |
| Octan-3-one | 1.01% |
| 1,8-Cineole | 0.82% |

| Monoterpenes | Sesquiterpenes | Monoterpenols | Sesquiterpenols | Ketones |
|--------------|----------------|---------------|-----------------|---------|
| 10.83% | 9.45% | 37.00% | 0.49% | 1.45% |
| Esters | Ethers | Aldehydes | Phenols | Other |
| 38.27% | 1.25% | 0.00% | 0.00% | 1.26% |



- Monoterpenes ■ Sesquiterpenes ■ Monoterpenols
- Sesquiterpenols ■ Ketones ■ Esters
- Ethers ■ Phenols ■ Other



| Total Percentage | | 99.06% | | | |
|------------------|-------|------------|-----------------------------------|---------|--------------------|
| Peak Number | RT | Area % | Compound Name | RI | Chemical Family |
| 1 | 11.74 | 0.02% | Tricyclene | 923.00 | Monoterpene |
| 2 | 11.98 | 0.12% | alpha-Thujene | 927.80 | Monoterpene |
| 3 | 12.24 | 0.25% | alpha-Pinene | 936.10 | Monoterpene |
| 4 | 12.85 | 0.21% | Camphene | 950.30 | Monoterpene |
| 5 | 13.91 | 0.03% | Sabinene | 973.00 | Monoterpene |
| 6 | 14.02 | 0.12% | beta-Pinene | 974.00 | Monoterpene |
| 7 | 14.24 | 0.11% | 1-Octen-3-ol | 980.00 | Aliphatic Alcohol |
| 8 | 14.45 | 1.01% | Octan-3-one | 981.00 | Aliphatic Ketone |
| 9 | 14.65 | 0.63% | Myrcene | 989.20 | Monoterpene |
| 10 | 14.87 | 0.21% | 3-Octanol | 992.00 | Aliphatic Alcohol |
| 11 | 15.19 | 0.04% | alpha-Phellandrene | 1002.00 | Monoterpene |
| 12 | 15.43 | 0.10% | delta-3-Carene | 1008.00 | Monoterpene |
| 13 | 15.59 | 0.18% | Hexyl acetate | 1009.00 | Aliphatic Ester |
| 14 | 15.70 | 0.11% | alpha-Terpinene | 1014.00 | Monoterpene |
| 15 | 15.93 | 0.08% | meta-Cymene | 1022.00 | Monoterpene |
| 16 | 16.03 | 0.26% | para-Cymene | 1024.30 | Monoterpene |
| 17 | 16.20 | 0.36% | Limonene | 1029.50 | Monoterpene |
| 18 | 16.21 | Co-Eluting | beta-Phellandrene | 1030.00 | Monoterpene |
| 19 | 16.29 | 0.82% | 1,8-Cineole | 1031.80 | Monoterpene Ether |
| 20 | 16.59 | 4.48% | (Z)-beta-Ocimene | 1037.80 | Monoterpene |
| 21 | 17.02 | 3.20% | (E)-beta-Ocimene | 1047.70 | Monoterpene |
| 22 | 17.46 | 0.20% | gamma-Terpinene | 1054.00 | Monoterpene |
| 23 | 18.07 | 0.26% | cis-Linalool oxide (5) (furanoid) | 1075.10 | Monoterpenol |
| 24 | 18.72 | 0.27% | Terpinolene | 1092.10 | Monoterpene |
| 25 | 19.24 | 27.69% | Linalool | 1099.00 | Monoterpenol |
| 26 | 19.58 | 1.12% | 1-Octenyl-3 acetate | 1107.00 | Monoterpene Ester |
| 27 | 20.06 | 0.16% | Octan-3-yl acetate | 1124.00 | Aliphatic Ester |
| 28 | 20.28 | 0.35% | Alloocimene | 1129.90 | Monoterpene |
| 29 | 20.91 | 0.44% | Camphor | 1147.55 | Monoterpene Ketone |
| 30 | 21.78 | 2.11% | Borneol | 1168.71 | Monoterpenol |
| 31 | 21.78 | Co-Eluting | Lavandulol | 1161.50 | Monoterpenol |
| 32 | 22.20 | 5.76% | Terpinen-4-ol | 1180.57 | Monoterpenol |
| 33 | 22.35 | 0.12% | para-Cymen-8-ol | 1185.25 | Monoterpenol |
| 34 | 22.53 | 0.20% | Hexyl butyrate | 1186.80 | Aliphatic Ester |
| 35 | 22.70 | 1.06% | alpha-Terpineol | 1191.71 | Monoterpenol |
| 36 | 24.07 | 0.08% | Bornyl formate | 1227.00 | Monoterpene Ester |
| 37 | 24.55 | 0.03% | Hexyl isovalerate | 1242.00 | Monoterpene Ester |
| 38 | 25.06 | 29.71% | Linalyl acetate | 1263.80 | Monoterpene Ester |
| 39 | 26.19 | 5.74% | Lavandulyl acetate | 1285.00 | Monoterpene Ester |
| 40 | 28.67 | 0.31% | Neryl acetate | 1362.90 | Monoterpene Ester |
| 41 | 29.30 | 0.65% | Geranyl acetate | 1379.20 | Monoterpene Ester |
| 42 | 29.62 | 0.09% | Hexyl hexanoate | 1384.00 | Aliphatic Ester |
| 43 | 30.46 | 0.07% | cis-alpha-Bergamotene | 1411.50 | Sesquiterpene |

