

## Sample:

---

Client: | Nature's Gift  
Sample: | Lavender (Lavandula angustifolia)  
Batch # | BU-58793  
CAS Number | 8000-28-0  
Type: | Essential Oil

---

## Conclusion:

- No adulterants, diluents, or contaminants were detected via this method.
- This oil meets the expected profile for genuine essential oil of Lavender (Lavandula angustifolia).



X 

Validated By:

Essential Validation Services

747 SW 2nd Ave, Gainesville, FL 32601

Phone: 317-361-5044 E-mail: [Adam@essentialvalidationservices.com](mailto:Adam@essentialvalidationservices.com)

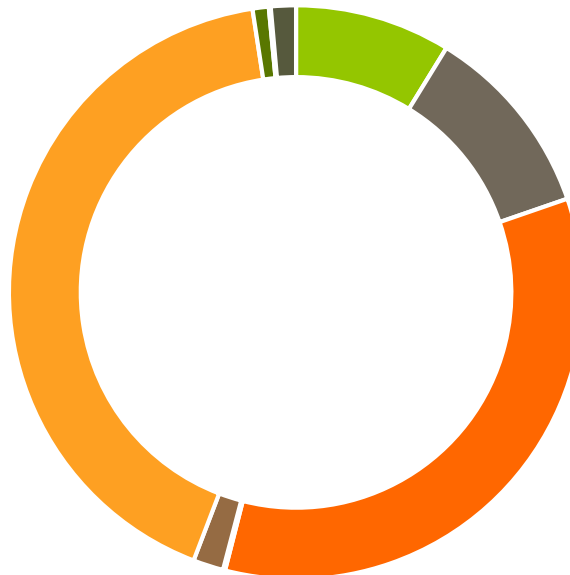
## Summary of Analyses

---

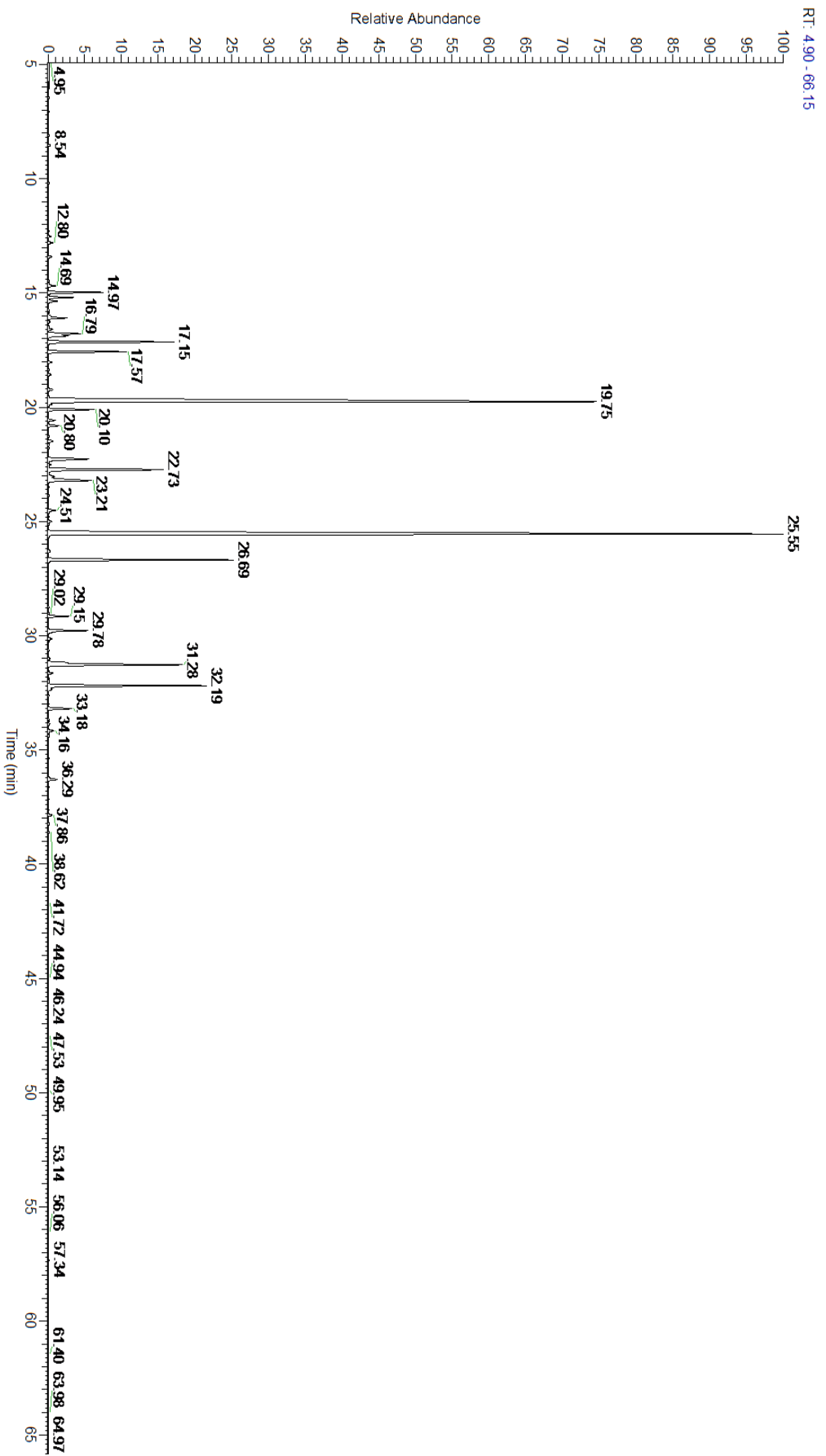
A fresh sample of Lavender (Lavandula angustifolia) Essential Oil (10 uL in .5to.5 mL Hexane + ETOH) was prepared and analyzed via split injection GC/EI-MS.

Main Compounds	Percentages
Linalyl acetate	32.37%
Linalool	26.68%
Lavandulyl acetate	5.46%
(Z)-beta-Farnesene	4.57%
beta-Caryophyllene	4.42%
Terpinen-4-ol	3.79%
(Z)-beta-Ocimene	3.67%
(E)-beta-Ocimene	2.28%
alpha-Terpineol	1.73%
Octan-3-one	1.52%
Borneol (Co-Eluting)	1.51%
1-Octenyl-3 acetate	1.26%
Geranyl acetate	1.18%

Monoterpenes	Sesquiterpenes	Monoterpenols	Sesquiterpenols	Ketones
8.78%	10.93%	34.27%	0.12%	1.71%
Esters	Ethers	Aldehydes	Phenols	Other
41.76%	0.91%	0.11%	0.00%	1.41%



- Monoterpenes   ■ Sesquiterpenes   ■ Monoterpenols
- Sesquiterpenols   ■ Ketones   ■ Esters
- Ethers   ■ Phenols   ■ Other



ESSENTIAL VALIDATION SERVICES | 747 SW 2<sup>ND</sup> AVE GAINESVILLE, FLORIDA 32601 | 317-361-5044

Total Percentage		99.09%			
Peak Number	RT	Area %	Compound Name	RI	Chemical Family
1	12.30	0.01%	Tricyclene	923.00	Monoterpene
2	12.52	0.06%	alpha-Thujene	927.80	Monoterpene
3	12.80	0.14%	alpha-Pinene	936.10	Monoterpene
4	13.41	0.12%	Camphene	950.30	Monoterpene
5	13.61	0.01%	Sabinene	973.00	Monoterpene
6	14.46	0.03%	beta-Pinene	974.00	Monoterpene
7	14.69	0.24%	1-Octen-3-ol	980.00	Aliphatic Alcohol
8	14.97	1.52%	Octan-3-one	981.00	Aliphatic Ketone
9	15.19	0.71%	Myrcene	989.20	Monoterpene
10	15.36	0.26%	3-Octanol	992.00	Aliphatic Alcohol
11	15.37	Co-Eluting	Butyl butyrate	993.00	Aliphatic Ester
12	15.76	0.03%	alpha-Phellandrene	1002.00	Monoterpene
13	16.00	0.07%	delta-3-Carene	1008.00	Monoterpene
14	16.10	0.49%	Hexyl acetate	1009.00	Aliphatic Ester
15	16.26	0.04%	alpha-Terpinene	1014.00	Monoterpene
16	16.60	0.13%	para-Cymene	1024.30	Monoterpene
17	16.79	1.06%	Limonene	1029.50	Monoterpene
18	16.87	0.59%	1,8-Cineole	1031.80	Monoterpene Ether
19	17.15	3.67%	(Z)-beta-Ocimene	1037.80	Monoterpene
20	17.57	2.28%	(E)-beta-Ocimene	1047.70	Monoterpene
21	18.03	0.11%	gamma-Terpinene	1054.00	Monoterpene
22	18.36	0.03%	trans-Sabinene hydrate	1072.00	Monoterpenol
23	18.57	0.09%	cis-Linalool oxide (5) (furanoid)	1075.10	Monoterpenol
24	19.22	0.17%	trans-Linalool oxide (5) (furanoid)	1092.20	Monoterpenol
25	19.75	26.68%	Linalool	1099.00	Monoterpenol
26	20.10	1.26%	1-Octenyl-3 acetate	1107.00	Monoterpene Ester
27	20.57	0.19%	Octan-3-yl acetate	1124.00	Aliphatic Ester
28	20.80	0.31%	Alloocimene	1129.90	Monoterpene
29	21.48	0.17%	Camphor	1147.55	Monoterpene Ketone
30	22.27	1.51%	Borneol	1168.71	Monoterpenol
31	22.28	Co-Eluting	Lavandulol	1161.50	Monoterpenol
32	22.73	3.79%	Terpinen-4-ol	1180.57	Monoterpenol
33	23.04	0.25%	Hexyl butyrate	1186.80	Aliphatic Ester
34	23.21	1.73%	alpha-Terpineol	1191.71	Monoterpenol
35	24.51	0.27%	Nerol	1230.67	Monoterpenol
36	25.00	0.11%	Cuminal	1243.00	Monoterpene Aldehyde
37	25.13	0.02%	Carvone	1248.14	Monoterpene Ketone
38	25.55	32.37%	Linalyl acetate	1263.80	Monoterpene Ester
39	26.69	5.46%	Lavandulyl acetate	1285.00	Monoterpene Ester
40	29.15	0.56%	Neryl acetate	1362.90	Monoterpene Ester
41	29.78	1.18%	Geranyl acetate	1379.20	Monoterpene Ester
42	30.14	0.12%	7-epi-Sesquithujene	1398.10	Sesquiterpene
43	31.00	0.06%	cis-alpha-Bergamotene	1411.50	Sesquiterpene



44	31.18	0.44%	alpha-Santalene	1426.50	Sesquiterpene
45	31.28	4.42%	beta-Caryophyllene	1427.14	Sesquiterpene
46	31.65	0.14%	trans-alpha-Bergamotene	1435.00	Sesquiterpene
47	32.19	4.57%	(Z)-beta-Farnesene	1453.40	Sesquiterpene
48	32.35	0.14%	alpha-Humulene	1461.43	Sesquiterpene
49	32.99	0.01%	gamma-Murolene	1478.86	Sesquiterpene
50	33.18	0.74%	Germacrene D	1484.71	Sesquiterpene
51	33.77	0.02%	(Z,E)-alpha-Farnesene	1500.50	Sesquiterpene
52	33.87	0.04%	(E,E)-alpha-Farnesene	1508.14	Sesquiterpene
53	34.16	0.19%	gamma-Cadinene	1515.29	Sesquiterpene
54	34.41	0.04%	delta-Cadinene	1524.14	Sesquiterpene
55	36.29	0.32%	Caryophyllene oxide	1594.86	Sesquiterpene Ether
56	37.86	0.12%	T-Cadinol	1640.43	Sesquiterpenol

ESSENTIAL VALIDATION SERVICES | 747 SW 2<sup>ND</sup> AVE GAINESVILLE, FLORIDA 32601 | 317-361-5044