



316 Old Hickory Blvd East, Madison, TN 37115

tel (615)612-4270 fax (615)860-9171

sold@naturesgift.com

Healing Body, Mind and Spirit with Pure Essential Oils

Since 1995

www.naturesgift.com

## Jasmine Absolute

*Jasminum sambac*

Batch No. IN-58920

Organically Produced, India

### Esters 41.03%

benzyl acetate	12.21
methyl anthranilate	10.37
(Z)-3-hexenyl benzoate	9.34
methyl oleate	3.80
methyl linoleate	2.14
methyl palmitate	1.60
3-hexenyl acetate	0.76
phenylethyl benzoate	0.47
3-hexenyl butyrate	0.15
2-phenylethyl acetate	0.11
benzyl benzoate	0.08

### Ketones 0.5%

6-camphenone	0.50
--------------	------

### Sesquiterpenes 7.36%

$\alpha$ farnesene	4.26
$\beta$ farnesene	1.42
trans- $\alpha$ -bisabolene	1.42
cis- $\alpha$ -bisabolene	0.26

### Sesquiterpenols 3.18%

geranyl linalool	1.37
germacrene D-4-ol	1.31
(z, E)-geranyl linalool	0.50

### Phenols 5.22%

eugenol	0.34
benzyl alcohol	4.24
2-phenylethanol	0.64

### Monoterpenes 0.02%

trans- $\beta$ -ocimene	0.02
-------------------------	------

### Monoterpenols 5.74%

linalool	5.59
trans-linalool oxide	0.09
cis-linalool oxide	0.06

### Other 11.53%

indole	5.75
Unknown	5.47
squalene	0.31

Raw Material: *Jasminum sambac*

Production Solvent extracted, flowers

Date of Analysis: 4//22/2019

Jasmine Absolute (*Jasminum sambac*)  
IN-58920

Client



Source



Sample

Jasmine Absolute (*Jasminum sambac*)  
Batch #:..... | IN-58920  
Type:..... | Absolute Oil  
CAS Number:... | 91770-14-8  
**Natures Gift**

Client



Website

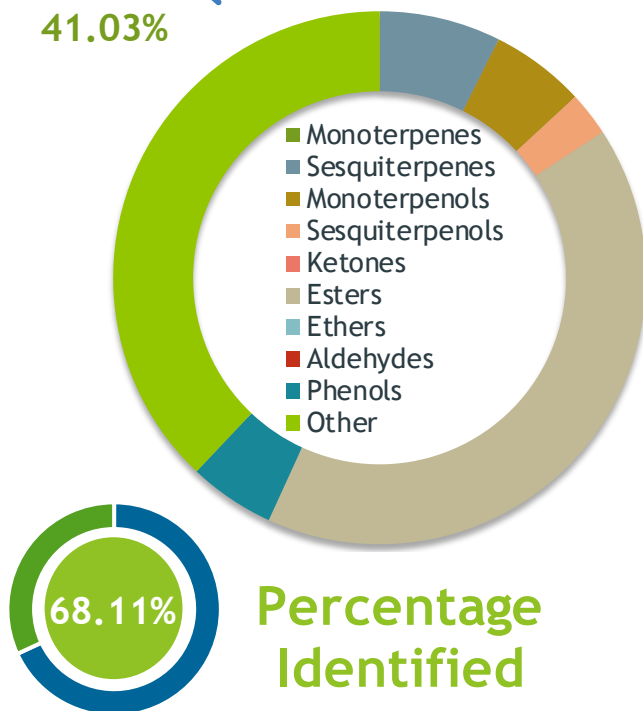


Primary

**12.21%** | Benzyl acetate  
**10.37%** | Methyl anthranilate  
**9.34%** | (Z)-3-Hexenyl benzoate

Esters

41.03%



Result



Conclusion

No adulterants, diluents, or contaminants were detected via this method. This oil meets the expected profile for genuine essential oil of Jasmine Absolute (*Jasminum sambac*)

Internal Number: | EVS-2625



Essential Validation Services

747 SW 2nd Ave IMB 12 Suite 306  
Gainesville, FL 32601

317.361.5044 |  
<https://essentialvalidationservices.com/>  
adam@essentialvalidationservices.com

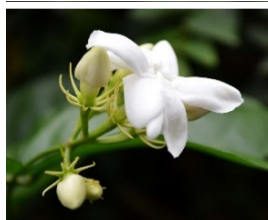
Monoterpenes	0.02%
Sesquiterpenes	7.36%
Monoterpenols	5.74%
Sesquiterpenols	2.68%
Ketones	0.00%
Esters	41.03%
Ethers	0.00%
Aldehydes	0.00%
Phenols	5.22%
Other	37.95%

- This report is the digitally signed and will only be considered valid if the signature is intact.  
- This report may not be published without the consent of Essential Validation Services.  
- Chromatograph image may not show full run time

Client



Source



*Jasmine Absolute (Jasminum sambac)*  
IN-58920

Total Percentage		68.11%			
Number	RT	Area %	Compound Name	RI	Chemical Family
1	15.26	0.76%	3-Hexenyl acetate	1004.00	Aliphatic Ester
2	16.49	4.24%	Benzyl alcohol	1032.00	Simple Phenolic
3	17.06	0.02%	trans-beta-Ocimene	1047.70	Monoterpene
4	17.95	0.06%	cis-Linalool oxide (fur.)	1075.10	Monoterpenol
5	18.58	0.09%	trans-Linalool oxide (5) (furanoid)	1092.20	Monoterpenol
6	19.10	5.59%	Linalool	1099.00	Monoterpenol
7	19.68	0.64%	2-Phenylethanol	1116.30	Simple Phenolic
8	21.64	12.21%	Benzyl acetate	1161.25	Phenolic Ester
9	22.12	0.15%	3-Hexenyl butyrate	1186.80	Aliphatic Ester
10	25.12	0.11%	2-Phenylethyl acetate	1257.00	Phenolic Ester
11	26.43	5.75%	Indole	1293.60	Indole
12	28.07	10.37%	Methyl anthranilate	1348.33	Phenolic Ester
13	28.39	0.34%	Eugenol	1365.89	Phenylpropanoid
14	28.77	0.50%	6-Camphenone		
15	31.73	1.42%	beta-Farnesene	1456.29	Sesquiterpene
16	32.53	0.59%	UK Jasmine		
17	32.79	0.74%	UK Jasmine		
18	33.12	0.46%	UK Jasmine		
19	33.25	4.26%	alpha-Farnesene	1508.14	Sesquiterpene
20	33.58	0.58%	UK Jasmine		
21	33.85	0.55%	UK Jasmine		
22	34.04	0.26%	cis-alpha-Bisabolene	1502.00	Sesquiterpene
23	34.34	1.42%	trans-alpha-Bisabolene	1537.33	Sesquiterpene
24	34.93	0.45%	UK Jasmine		
25	35.24	9.34%	(Z)-3-Hexenyl benzoate	1568.00	Monoterpene Ester
26	35.50	1.31%	Germacrene D-4-ol	1579.14	Sesquiterpenol
27	40.88	0.08%	Benzyl benzoate	1752.00	Phenolic Ester
28	43.11	0.47%	Phenylethyl benzoate	1841.00	Phenolic Ester
29	44.55	1.60%	Methyl palmitate	1924.67	Fatty Acid Ester
30	45.48	0.50%	(Z,E)-Geranyl linalool		
31	46.16	1.05%	UK Jasmine		
32	46.45	1.05%	UK Jasmine		
33	47.10	1.37%	Geranyl Linalool	2026.00	Sesquiterpenol
34	48.57	2.14%	Methyl linoleate	2096.25	Fatty Acid Ester
35	48.72	3.80%	Methyl oleate	2098.00	Fatty Acid Ester

ESSENTIAL VALIDATION SERVICES | 747 SW 2<sup>ND</sup> AVE GAINESVILLE, FLORIDA 32601 | 317-361-5044

