

**Client**  **Source** 

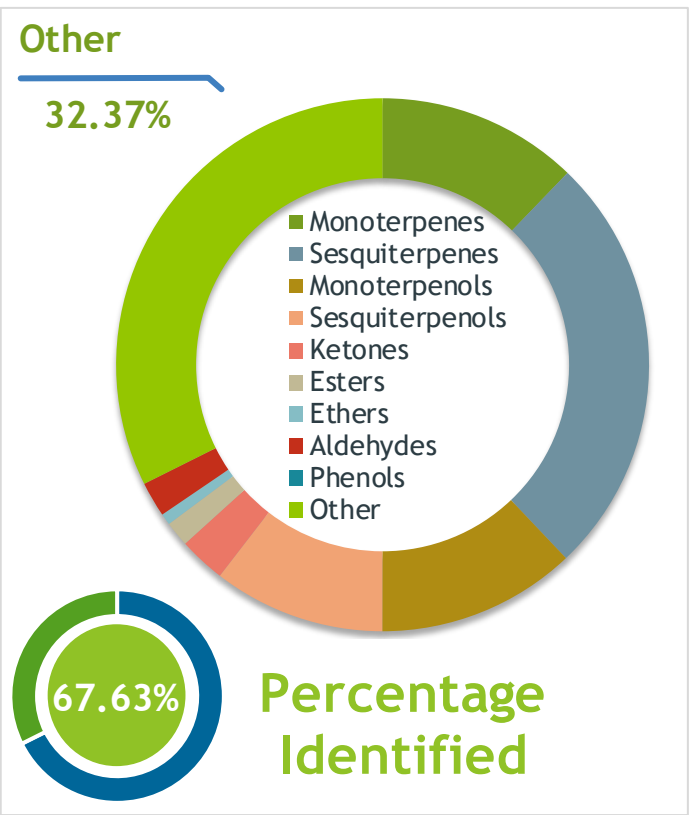
*Incense Cedar (Calodcedrus macrolepis Kurz var formosana) TW-58927*

**Sample** Incense Cedar (*Calodcedrus macrolepis*)  
 Batch #:..... TW-58927  
 Type:..... Essential Oil  
 CAS Number:.....  
 Nature's Gift

**Client**  **Website** 

**Primary**

<u>8.00%</u>	<u>delta-Cadinene</u>
<u>6.57%</u>	<u>alpha-Terpineol</u>
<u>6.04%</u>	<u>alpha-Pinene</u>



**Result**

**APPROVED**

**Conclusion**

No adulterants, diluents, or contaminants were detected via this method. This oil meets the expected profile for genuine essential oil of Incense Cedar (*Calodcedrus macrolepis Kurz var formosana*)

Internal Number: | EVS-2977



**Essential Validation Services**

747 SW 2nd Ave IMB 12 Suite 306  
 Gainesville, FL 32601

317.361.5044 |  
<https://essentialvalidationservices.com/>  
 adam@essentialvalidationservices.com

*Adam Christen*

Monoterpenes	12.21%	12.21%
Sesquiterpenes	25.71%	25.71%
Monoterpenols	12.10%	12.10%
Sesquiterpenols	10.44%	10.44%
Ketones	2.83%	2.83%
Esters	1.52%	1.52%
Ethers	0.69%	0.69%
Aldehydes	2.13%	2.13%
Phenols	0.00%	0.00%
Other	32.37%	32.37%

ESSENTIAL VALIDATION SERVICES | 747 SW 2<sup>ND</sup> AVE GAINESVILLE, FLORIDA 32601 | 317-361-5044

Client



Source



*Incense Cedar (Calocedrus macrolepis Kurz var formosana)  
TW-58927*

Total Percentage		67.63%			
Number	RT	Area %	Compound Name	RI	Chemical Family
1	11.35	0.02%	Bornylene	902.50	Monoterpene
2	12.05	0.04%	Tricyclene	923.00	Monoterpene
3	12.55	6.04%	alpha-Pinene	936.10	Monoterpene
4	13.09	0.72%	alpha-Fenchene	946.00	Monoterpene
5	14.03	0.12%	Sabinene	973.00	Monoterpene
6	14.27	0.18%	beta-Pinene	974.00	Monoterpene
7	15.50	0.05%	alpha-Phellandrene	1002.00	Monoterpene
8	15.74	0.15%	delta-3-Carene	1008.00	Monoterpene
9	15.93	0.24%	1,4-Cineole	1012.00	Monoterpene Ether
10	16.00	0.36%	alpha-Terpinene	1014.00	Monoterpene
11	16.33	0.90%	para-Cymene	1024.30	Monoterpene
12	16.51	1.47%	Limonene	1029.50	Monoterpene
13	16.62	0.22%	1,8-Cineole	1031.80	Monoterpene Ether
14	17.76	0.38%	gamma-Terpinene	1054.00	Monoterpene
15	18.72	0.29%	para-Cymenene	1092.43	Monoterpene
16	18.97	1.49%	Terpinolene	1092.10	Monoterpene
17	19.41	0.05%	Linalool	1099.00	Monoterpenol
18	19.99	0.58%	Fenchol	1099.10	Monoterpenol
19	20.79	0.10%	1-Terpineol	1135.50	Monoterpenol
20	20.89	0.42%	Nopinone		
21	21.19	1.41%	Camphor	1147.55	Monoterpene Ketone
22	21.70	0.09%	Karahanaenone	1156.03	Monoterpene Ketone
23	21.82	0.16%	Pinocamphone	1172.00	Monoterpene Ketone
24	22.04	0.74%	Isoborneol	1159.70	Monoterpenol
25	22.46	2.60%	Terpinen-4-ol	1180.57	Monoterpenol
26	22.74	0.13%	para-Cymen-8-ol	1185.25	Monoterpenol
27	22.83	0.98%	UK Incense Cedar		
28	22.98	6.57%	alpha-Terpineol	1191.71	Monoterpenol
29	23.19	1.83%	Myrtenal	1200.43	Monoterpene Aldehyde
30	23.65	0.67%	Verbenone	1213.80	Monoterpene Ketone
31	24.03	0.05%	endo-Fenchyl acetate		
32	24.32	0.07%	Citronellol	1229.25	Monoterpenol
33	24.85	0.11%	Methyl thymol ether	1234.57	Monoterpene Ether
34	25.26	0.50%	Piperitone	1258.50	Monoterpene Ketone
35	25.48	0.77%	cis-Myrtanol	1255.20	Monoterpenol

ESSENTIAL VALIDATION SERVICES | 747 SW 2<sup>ND</sup> AVE GAINESVILLE, FLORIDA 32601 | 317-361-5044

Client



Source



*Incense Cedar (Calodcedrus macrolepis Kurz var formosana)  
TW-58927*

Number	RT	Area %	Compound Name	RI	Chemical Family
36	26.03	0.30%	Phellandral	1273	Monoterpenol
37	26.39	0.12%	Isobornyl acetate	1285.50	Monoterpene Ether
38	26.87	0.49%	Thymol	1288.15	Monoterpenol
39	27.65	0.37%	Methyl thujate		
40	28.52	1.52%	alpha-Terpinyl acetate	1353.00	Monoterpene Ester
41	28.80	2.99%	UK Incense Cedar		
42	29.07	1.04%	UK Incense Cedar		
43	29.41	0.65%	UK Incense Cedar		
44	29.53	0.61%	UK Incense Cedar		
45	30.02	1.94%	beta-Elemene	1389.20	Sesquiterpene
46	30.42	1.09%	Sibirene	1401.20	Sesquiterpene
47	30.80	1.00%	alpha-Cedrene	1410.75	Sesquiterpene
48	31.01	0.15%	beta-Cedrene	1428.00	Sesquiterpene
49	32.07	0.16%	alpha-Humulene	1461.43	Sesquiterpene
50	32.74	2.60%	UK Incense Cedar		
51	33.11	1.20%	allo-Aromadendrene	1471.00	Sesquiterpene
52	33.47	4.58%	alpha-Amorphene	1481.75	Sesquiterpene
53	33.64	0.18%	beta-Bisabolene	1509.86	Sesquiterpene
54	33.92	5.09%	gamma-Cadinene	1515.29	Sesquiterpene
55	34.17	8.00%	delta-Cadinene	1524.14	Sesquiterpene
56	34.61	0.86%	alpha-Cadinene	1537.86	Sesquiterpene
57	34.78	1.13%	alpha-Calacorene	1537.14	Sesquiterpene
58	34.93	0.91%	Elemol	1538.00	Sesquiterpenol
59	35.20	0.46%	(Z)-Nerolidol	1542.25	Sesquiterpenol
60	36.62	0.41%	Cedrol	1600.04	Sesquiterpenol
61	36.90	0.33%	1,10-di-epi-Cubenol	1612.29	Sesquiterpenol
62	37.29	0.61%	UK Incense Cedar		
63	37.39	0.77%	10-epi-gamma-Eudesmol	1620.00	Sesquiterpenol
64	37.66	3.52%	epi-alpha-Cadinol	1640.43	Sesquiterpenol
65	38.03	4.04%	T-Muurolol	1643.29	Sesquiterpenol
66	38.57	0.33%	Cadalene	1666.00	Sesquiterpene
67	47.67	1.26%	UK Incense Cedar		
68	48.46	0.81%	UK Incense Cedar		
69	48.70	2.73%	UK Incense Cedar		
70	49.25	0.65%	UK Incense Cedar		
71	50.41	6.01%	UK Incense Cedar		

ESSENTIAL VALIDATION SERVICES | 747 SW 2<sup>ND</sup> AVE GAINESVILLE, FLORIDA 32601 | 317-361-5044