

Sample:

Client: | Nature's Gift
Sample: | Guava Leaf (Psidium guajava)
Batch # | #TH-58679
CAS Number | 90045-46-8
Type: | Essential Oil

Conclusion:

- No adulterants, diluents, or contaminants were detected via this method.
- This oil meets the expected profile for genuine essential oil of Guava Leaf (Psidium guajava).



X 

Validated By:

Essential Validation Services

747 SW 2nd Ave, Gainesville, FL 32601

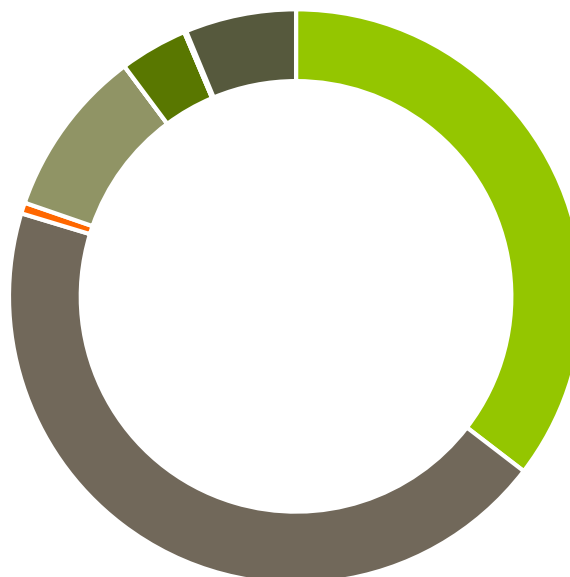
Phone: 317-361-5044 E-mail: Adam@essentialvalidationservices.com

Summary of Analyses

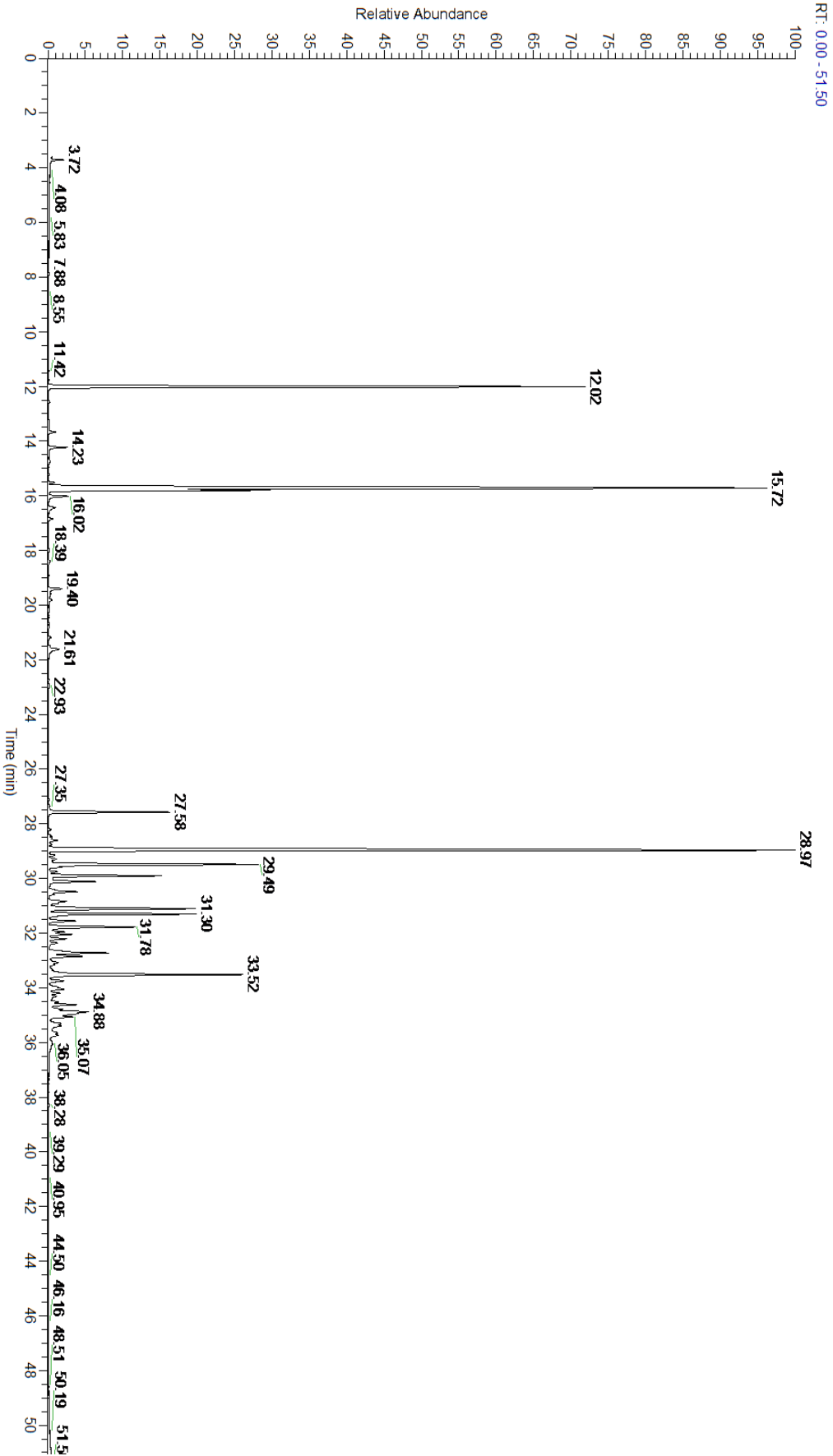
A fresh sample of Guava Leaf (Psidium guajava) Essential Oil (10 uL in .5to.5 mL Hexane + ETOH) was prepared and analyzed via split injection GC/EI-MS.

Main Compounds	Percentages
Limonene	21.50%
beta-Caryophyllene	20.70%
alpha-Pinene	11.93%
Globulol	4.92%
Aromadendrene	4.80%
1,8-Cineole	3.83%
alpha-Bisabolene	3.77%
beta-Bisabolene	3.30%
alpha-Copaene	2.71%
(E)-beta-Farnesene	2.55%
delta-Cadinene	2.23%
(E)-Nerolidol	1.56%
allo-Aromadendrene	1.11%

Monoterpenes	Sesquiterpenes	Monoterpenols	Sesquiterpenols	Ketones
35.42%	44.25%	0.62%	9.51%	0.00%
Esters	Ethers	Aldehydes	Phenols	Other
0.00%	3.83%	0.00%	0.12%	6.25%



- Monoterpenes ■ Sesquiterpenes ■ Monoterpenols
- Sesquiterpenols ■ Ketones ■ Esters
- Ethers ■ Phenols ■ Other



Total Percentage		93.75%			
Peak Number	RT	Area %	Compound Name	RI	Chemical Family
1	11.42	0.01%	Hashishene	922.00	Monoterpene
2	11.77	0.01%	alpha-Thujene	927.80	Monoterpene
3	12.02	11.93%	alpha-Pinene	936.10	Monoterpene
4	12.58	0.04%	Camphene	950.30	Monoterpene
5	13.25	0.02%	Benzaldehyde	958.00	Simple Phenolic
6	13.67	0.16%	beta-Pinene	974.00	Monoterpene
7	14.23	0.40%	Myrcene	989.20	Monoterpene
8	14.75	0.05%	alpha-Phellandrene	1002.00	Monoterpene
9	15.52	0.14%	para-Cymene	1024.30	Monoterpene
10	15.72	21.50%	Limonene	1029.50	Monoterpene
11	15.80	3.83%	1,8-Cineole	1031.80	Monoterpene Ether
12	16.02	0.49%	(Z)-beta-Ocimene	1037.80	Monoterpene
13	16.44	0.21%	(E)-beta-Ocimene	1047.70	Monoterpene
14	16.85	0.09%	gamma-Terpinene	1054.00	Monoterpene
15	18.39	0.05%	Linalool	1099.00	Monoterpenol
16	19.40	0.39%	Alloocimene	1129.90	Monoterpene
17	19.59	0.10%	Limona Ketone	1134.50	Simple Phenolic
18	19.82	0.09%	alpha-Pinocarveol	1143.75	Monoterpenol
19	21.19	0.06%	Terpinen-4-ol	1180.57	Monoterpenol
20	21.52	0.03%	trans-para-Mentha-1(7),8-dien-2-o	1187.00	Sesquiterpenol
21	21.61	0.42%	alpha-Terpineol	1191.71	Monoterpenol
22	27.58	2.71%	alpha-Copaene	1379.00	Sesquiterpene
23	28.44	0.07%	Italicene	1401.10	Sesquiterpene
24	28.61	0.22%	alpha-Gurjunene	1412.00	Sesquiterpene
25	28.97	20.70%	beta-Caryophyllene	1427.14	Sesquiterpene
26	29.30	0.19%	beta-Gurjunene	1437.71	Sesquiterpene
27	29.49	4.80%	Aromadendrene	1449.80	Sesquiterpene
28	29.75	0.19%	(Z)-beta-Farnesene	1453.40	Sesquiterpene
29	29.91	2.55%	(E)-beta-Farnesene	1456.29	Sesquiterpene
30	30.11	1.11%	allo-Aromadendrene	1471.00	Sesquiterpene
31	30.49	0.74%	gamma-Murolene	1478.86	Sesquiterpene
32	30.59	0.11%	ar-Curcumene	1480.50	Sesquiterpene
33	30.84	0.60%	beta-Selinene	1487.57	Sesquiterpene
34	31.11	3.77%	alpha-Bisabolene	1502.00	Sesquiterpene
35	31.30	3.30%	beta-Bisabolene	1509.86	Sesquiterpene
36	31.56	0.61%	gamma-Cadinene	1515.29	Sesquiterpene
37	31.78	2.23%	delta-Cadinene	1524.14	Sesquiterpene
38	31.96	0.35%	gamma-Bisabolene	1535.65	Sesquiterpene
39	32.72	1.56%	(E)-Nerolidol	1567.00	Sesquiterpenol
40	33.52	4.92%	Globulol	1593.50	Sesquiterpenol
41	33.75	0.38%	Viridiflorol	1596.00	Sesquiterpenol
42	33.98	0.21%	1,10-di-epi-Cubenol	1612.29	Sesquiterpenol
43	34.05	0.36%	Ledol	1623.00	Sesquiterpenol

