



316 Old Hickory Blvd East, Madison, TN 37115

tel (615)612-4270 fax (615)860-9171

orderdesk@naturesgift.com

Balancing Body, Mind and Spirit with Pure Essential Oils

Since 1995

www.naturesgift.com

White Grapefruit

Citrus paradisi

Batch # IS-59081

Israel

Monoterpenes	95.11%
limonene	90.67
myrcene	2.90
α pinene	0.72
sabinene	0.60
(Z) β -ocimene	0.17
β pinene	0.05

Monoterpenols	0.16%
linalol	0.11
α terpineol	0.05

Aldehydes	1.72%
decanal	0.60
citronellal	0.12
octanal	0.67
nonanal	0.09
neral	0.04
citral	0.09
dodecanal	0.06
hexadecanal	0.01
osthole	0.04

Ketones	0.37%
nootkatone	0.37

Sesquiterpenes	1.11%
cis caryophyllene	0.43
β cadinene	0.16
α copaene	0.15
β cubebene	0.13
Germacrene D	0.1
α humulene	0.07
β elemene	0.04
bicyclogermacrene	0.03

Sesquiterpenols	0.08%
elemol	0.05
cubebol	0.01
germacrene D-4-ol	0.02

Esters	0.21%
geranyl acetate	0.12
hexyl acetate	0.01
octyl acetate	0.06
citronellyl acetate	0.02

Ethers	0.03%
perillene	0.02
trans-limonene oxide	0.01

Other	0.96%
auraptene	0.70
auraptenol	0.19
1-octanol	0.02
tricosane	0.01
osthole	0.04

Raw Material: Rind

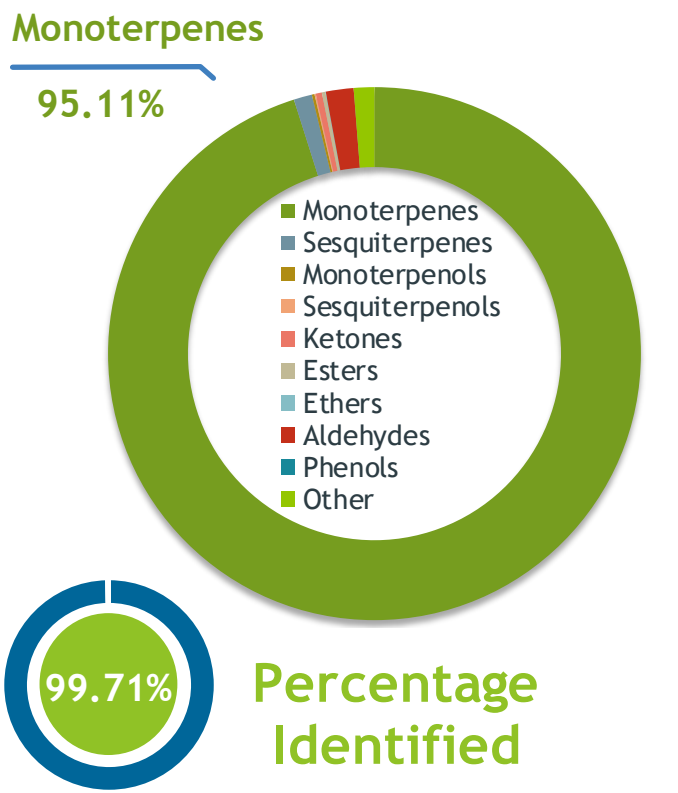
Production Method: Cold Pressed

Data of analysis: 6/27/2020

Client  **Source** 

Grapefruit, White (Citrus x paradisi, White)
IS-59081

Sample Grapefruit, White (Citrus x paradisi, White)
Batch #:..... IS-59081
Type:..... Essential Oil
CAS Number:... 8016-20-4
Nature's Gift



Client  **Website** 

Primary

90.67% | Limonene
2.90% | Myrcene
0.72% | alpha-Pinene

Result 

Conclusion No adulterants, diluents, or contaminants were detected via this method. This oil meets the expected profile for genuine Essential Oil of Grapefruit, White (Citrus x paradisi, White)

Internal Number: | EVS-3773


Essential Validation Services
747 SW 2nd Ave IMB 12 Suite 306
Gainesville, FL 32601
317.361.5044 | <https://essentialvalidationservices.com/>
adam@essentialvalidationservices.com


Monoterpenes	95.11%	95.11%
Sesquiterpenes		1.11%
Monoterpenols		0.16%
Sesquiterpenols		0.08%
Ketones		0.37%
Esters		0.21%
Ethers		0.03%
Aldehydes		1.68%
Phenols		0.00%
Other		1.25%

ESSENTIAL VALIDATION SERVICES | 747 SW 2ND AVE GAINESVILLE, FLORIDA 32601 | 317-361-5044

Client



Source

Grapefruit, White (*Citrus x paradisi*, White)

IS-59081

Total Percentage		99.71%		
Number	RT	Area %	Compound Name	Chemical Family
1	8.57	0.72%	alpha-Pinene	Monoterpene
2	10.15	0.60%	Sabinene	Monoterpene
3	10.32	0.05%	beta-Pinene	Monoterpene
4	10.91	2.90%	Myrcene	Monoterpene
5	11.49	0.67%	Octanal	Aliphatic Aldehyde
6	11.93	0.01%	Hexyl acetate	Aliphatic Ester
7	12.74	90.67%	Limonene	Monoterpene
8	13.44	0.17%	(Z)-beta-Ocimene	Monoterpene
9	14.57	0.02%	1-Octanol	Aliphatic Alcohol
10	15.86	0.11%	Linalool	Monoterpenol
11	16.09	0.09%	Nonanal	Aliphatic Aldehyde
12	16.51	0.02%	Perillene	Monoterpene Ether
13	17.51	0.01%	trans-Limonene oxide	Monoterpene Ether
14	18.28	0.12%	Citronellal	Monoterpene Aldehyde
15	20.20	0.05%	alpha-Terpineol	Monoterpenol
16	20.79	0.60%	Decanal	Aliphatic Aldehyde
17	21.04	0.06%	Octyl acetate	Aliphatic Ester
18	22.19	0.04%	Neral	Monoterpene Aldehyde
19	23.54	0.09%	Citral	Monoterpene Aldehyde
20	27.21	0.02%	Citronellyl acetate	Monoterpene Ester
21	28.22	0.15%	alpha-Copaene	Sesquiterpene
22	28.43	0.12%	Geranyl acetate	Monoterpene Ester
23	28.76	0.13%	beta-Cubebene	Sesquiterpene
24	28.85	0.04%	beta-Elemene	Sesquiterpene
25	29.76	0.06%	Dodecanal	Aliphatic Aldehyde
26	30.02	0.43%	cis-Caryophyllene	Sesquiterpene
27	31.50	0.07%	alpha-Humulene	Sesquiterpene
28	32.56	0.10%	Germacrene D	Sesquiterpene
29	33.15	0.03%	Bicyclgermacrene	Sesquiterpene
30	33.94	0.01%	Cubebol	Sesquiterpenol
31	34.11	0.16%	beta-Cadinene	Sesquiterpene
32	35.25	0.05%	Elemol	Sesquiterpenol
33	36.32	0.02%	Germacrene D-4-ol	Sesquiterpenol
34	44.44	0.37%	Nootkatone	Sesquiterpene Ketone
35	45.19	0.01%	Hexadecanal	Sesquiterpene Aldehyde

ESSENTIAL VALIDATION SERVICES | 747 SW 2ND AVE GAINESVILLE, FLORIDA 32601 | 317-361-5044

- Essential Oil testing is performed by using qualitative GC-MS. Method: SOP.T.01 Client Method
 - This report may not be published without the consent of Essential Validation Services.
 - Chromatograph image may be requested
 - This report is valid for 1 year from the analyzed date

