



316 Old Hickory Blvd East, Madison, TN 37115

tel (615)612-4270 fax (615)860-9171

sold@naturesgift.com

Balancing Body, Mind and Spirit with Pure Essential Oils

Since 1995

www.naturesgift.com

Red Grapefruit

Citrus paradisi

Batch # ME-59078

Mexico

Monoterpenes	95.48%
limonene	90.98
myrcene	3.00
α pinene	0.79
sabinene	0.54
(Z) β -ocimene	0.09
β pinene	0.06
γ terpinene	0.02

Monoterpenols	0.21%
linalol	0.14
α terpineol	0.07

Aldehydes	1.7%
octanal	0.72
decanal	0.56
nonanal	0.13
neral	0.12
citronellal	0.08
dodecanal	0.04
perilla aldehyde	0.03
undecanal	0.02

Ketones	0.05%
nootkatone	0.04
iso-bergaptene	0.01

Sesquiterpenes	0.96%
cis caryophyllene	0.31
β cadinene	0.14
α copaene	0.15
β cubebene	0.12
Germacrene D	0.08
α humulene	0.08
β elemene	0.05
bicyclogermacrene	0.02
δ elemene	0.01

Sesquiterpenols	0.08%
elemol	0.06
germacrene D-4-ol	0.02

Esters	0.12%
octyl acetate	0.07
geranyl acetate	0.04
α terpinyl acetate	0.01

Ethers	0.04%
trans-limonene oxide	0.02
cis-limonene oxide	0.02

Other	1.09%
auraptene	0.86
auraptenol	0.11
osthole	0.08
1-octanol	0.04

Raw Material: Rind

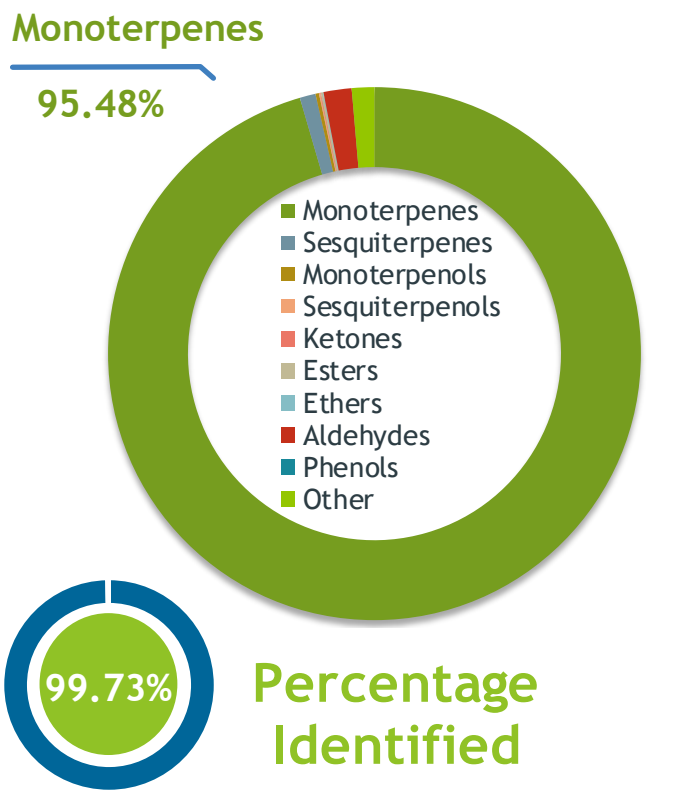
Production Method: Cold Pressed

Data of analysis: 6/27/2020

Client  **Source** 

Grapefruit Red (*Citrus x paradisi*, Red)
ME-59078

Sample Grapefruit Red (*Citrus x paradisi*, Red)
Batch #:..... ME-59078
Type:..... Essential Oil
CAS Number:... 8016-20-4
Nature's Gift



Client  **Website** 

Primary

90.98% Limonene
3.00% Myrcene
0.86% Auraptene

Result 

Conclusion No adulterants, diluents, or contaminants were detected via this method. This oil meets the expected profile for genuine Essential Oil of Grapefruit Red (*Citrus x paradisi*, Red)

Internal Number: | EVS-3772


Essential Validation Services
747 SW 2nd Ave IMB 12 Suite 306
Gainesville, FL 32601
317.361.5044 | <https://essentialvalidationservices.com/>
adam@essentialvalidationservices.com


Monoterpenes	95.48%	95.48%
Sesquiterpenes		0.96%
Monoterpenols		0.21%
Sesquiterpenols		0.08%
Ketones		0.04%
Esters		0.12%
Ethers		0.04%
Aldehydes		1.70%
Phenols		0.00%
Other		1.37%

ESSENTIAL VALIDATION SERVICES | 747 SW 2ND AVE GAINESVILLE, FLORIDA 32601 | 317-361-5044

Client



Source

Grapefruit Red (*Citrus x paradisi*, Red)

ME-59078

Total Percentage		99.73%		
Number	RT	Area %	Compound Name	Chemical Family
1	8.57	0.79%	alpha-Pinene	Monoterpene
2	10.15	0.54%	Sabinene	Monoterpene
3	10.33	0.06%	beta-Pinene	Monoterpene
4	10.91	3.00%	Myrcene	Monoterpene
5	11.49	0.72%	Octanal	Aliphatic Aldehyde
6	12.73	90.98%	Limonene	Monoterpene
7	13.44	0.09%	(Z)-beta-Ocimene	Monoterpene
8	13.92	0.02%	gamma-Terpinene	Monoterpene
9	14.56	0.04%	1-Octanol	Aliphatic Alcohol
10	15.86	0.14%	Linalool	Monoterpenol
11	16.09	0.13%	Nonanal	Aliphatic Aldehyde
12	17.31	0.02%	cis-Limonene oxide	Monoterpene Ether
13	17.51	0.02%	trans-Limonene oxide	Monoterpene Ether
14	18.28	0.08%	Citronellal	Monoterpene Aldehyde
15	20.19	0.07%	alpha-Terpineol	Monoterpenol
16	20.79	0.56%	Decanal	Aliphatic Aldehyde
17	21.03	0.07%	Octyl acetate	Aliphatic Ester
18	23.54	0.12%	Neral	Monoterpene Aldehyde
19	23.78	0.03%	Perilla aldehyde	Monoterpene Aldehyde
20	25.37	0.02%	Undecanal	Sesquiterpene Aldehyde
21	26.35	0.01%	delta-Elementene	Sesquiterpene
22	27.00	0.01%	alpha-Terpinyl acetate	Monoterpene Ester
23	28.22	0.15%	alpha-Copaene	Sesquiterpene
24	28.43	0.04%	Geranyl acetate	Monoterpene Ester
25	28.75	0.12%	beta-Cubebene	Sesquiterpene
26	28.83	0.05%	beta-Elementene	Sesquiterpene
27	29.75	0.04%	Dodecanal	Aliphatic Aldehyde
28	30.02	0.31%	cis-Caryophyllene	Sesquiterpene
29	31.49	0.08%	alpha-Humulene	Sesquiterpene
30	32.55	0.08%	Germacrene D	Sesquiterpene
31	33.14	0.02%	Bicyclgermacrene	Sesquiterpene
32	34.10	0.14%	beta-Cadinene	Sesquiterpene
33	35.25	0.06%	Elemol	Sesquiterpenol
34	36.30	0.02%	Germacrene D-4-ol	Sesquiterpenol
35	40.75	0.04%	Nootkatone	Sesquiterpene Ketone

ESSENTIAL VALIDATION SERVICES | 747 SW 2ND AVE GAINESVILLE, FLORIDA 32601 | 317-361-5044

- Essential Oil testing is performed by using qualitative GC-MS. Method: SOP.T.01 Client Method
 - This report may not be published without the consent of Essential Validation Services.
 - Chromatograph image may be requested
 - This report is valid for 1 year from the analyzed date

