

Sample:

Client: | Nature's Gift
Sample: | Red Grapefruit (Citrus x paradisi)
Batch # | IS-58717
CAS Number | 8016-20-4
Type: | Essential Oil

Conclusion:

- No adulterants, diluents, or contaminants were detected via this method.
- This oil meets the expected profile for genuine essential oil of Red Grapefruit (Citrus x paradisi).

X



Validated By:



Essential Validation Services

747 SW 2nd Ave, Gainesville, FL 32601

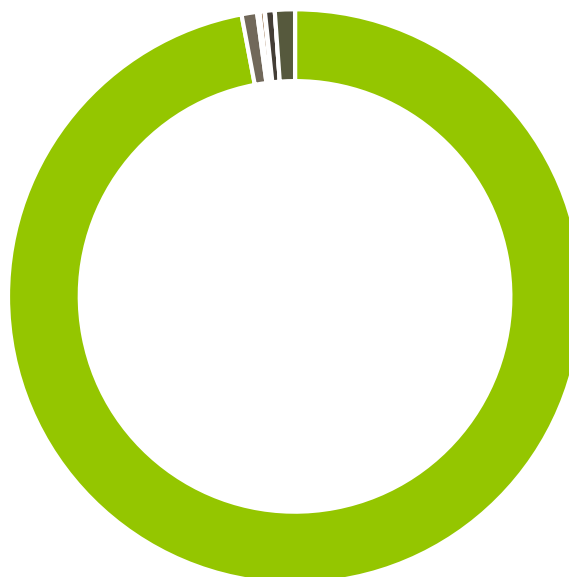
Phone: 317-361-5044 E-mail: Adam@essentialvalidationservices.com

Summary of Analyses

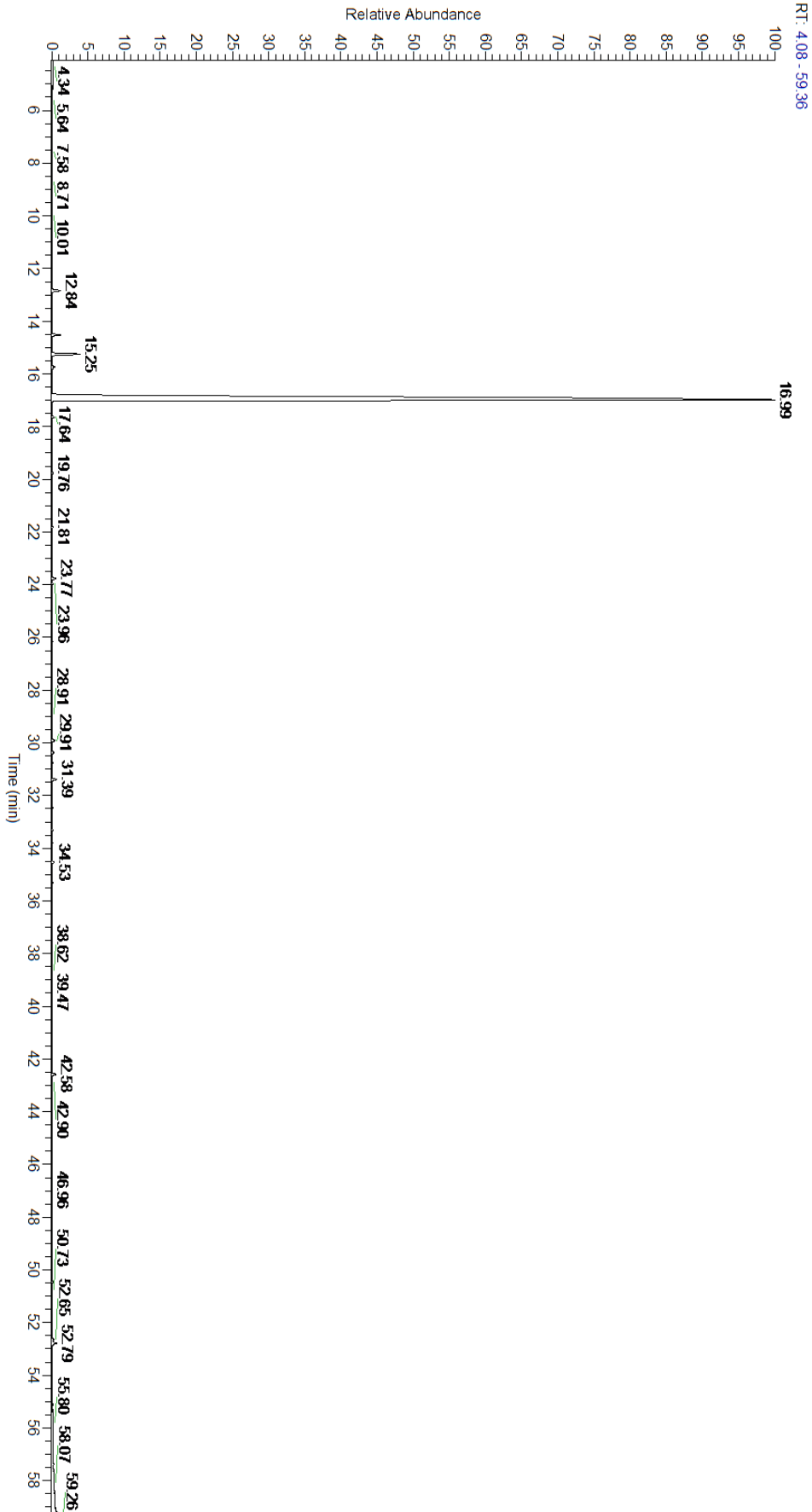
A fresh sample of Red Grapefruit (Citrus x paradisi) Essential Oil (10 uL in .5to.5 mL Hexane + ETOH) was prepared and analyzed via split injection GC/EI-MS.

Main Compounds	Percentages
Limonene	94.12%
Myrcene	1.68%
alpha-Pinene	0.54%
Sabinene	0.51%

Monoterpenes	Sesquiterpenes	Monoterpenols	Sesquiterpenols	Ketones
97.01%	0.87%	0.14%	0.00%	0.28%
Esters	Ethers	Aldehydes	Phenols	Other
0.02%	0.00%	0.55%	0.00%	1.13%



- Monoterpenes ■ Sesquiterpenes ■ Monoterpenols
- Sesquiterpenols ■ Ketones ■ Esters
- Ethers ■ Phenols ■ Other





ESSENTIAL VALIDATION SERVICES | 747 SW 2ND AVE GAINESVILLE, FLORIDA 32601 | 317-361-5044

Total Percentage		98.87%			
Peak Number	RT	Area %	Compound Name	RI	Chemical Family
1	12.84	0.54%	alpha-Pinene	936.10	Monoterpene
2	14.52	0.51%	Sabinene	973.00	Monoterpene
3	14.65	0.03%	beta-Pinene	974.00	Monoterpene
4	15.25	1.68%	Myrcene	989.20	Monoterpene
5	15.73	0.20%	Octanal	998.00	Aliphatic Aldehyde
6	16.99	94.12%	Limonene	1029.50	Monoterpene
7	17.64	0.13%	(E)-beta-Ocimene	1047.70	Monoterpene
8	19.76	0.08%	Linalool	1099.00	Monoterpenol
9	21.81	0.06%	Citronellal	1154.50	Monoterpene Aldehyde
10	23.33	0.02%	alpha-Terpineol	1191.71	Monoterpenol
11	23.77	0.25%	Decanal	1206.57	Aliphatic Aldehyde
12	23.96	0.04%	Citronellol	1229.25	Monoterpenol
13	25.10	0.01%	Neral	1246.57	Monoterpene Aldehyde
14	26.15	0.03%	Geranial	1272.00	Monoterpene Aldehyde
15	28.91	0.02%	Geranyl acetate	1379.20	Monoterpene Ester
16	29.91	0.20%	alpha-Copaene	1379.00	Sesquiterpene
17	30.35	0.14%	beta-Cubebene	1390.50	Sesquiterpene
18	31.39	0.31%	beta-Caryophyllene	1427.14	Sesquiterpene
19	33.32	0.08%	Germacrene D	1484.71	Sesquiterpene
20	34.53	0.14%	delta-Cadinene	1524.14	Sesquiterpene
21	42.58	0.28%	Nootkatone	1807.00	Sesquiterpene Ketone