



Essential Validation Services



Sample:

Client: | Enfleurage
Sample: | White Frankincense Sacra (Boswellia Sacra)
Batch # | WF 10-26-2017
Cas Number | 89957-98-2
Type: | Essential Oil

Conclusion:

- No adulterants, diluents, or contaminants were detected via this method.
- This oil meets the expected profile for genuine essential oil of White Frankincense Sacra (Boswellia Sacra)

**X**

A handwritten signature in black ink, appearing to read "Adam Christen", is written over a horizontal line.

Validated By:

Essential Validation Services

747 SW 2nd Ave, Gainesville, FL 32601

Phone: 317-361-5044 E-mail: Adam@essentialvalidationservices.com

Summary of Analyses

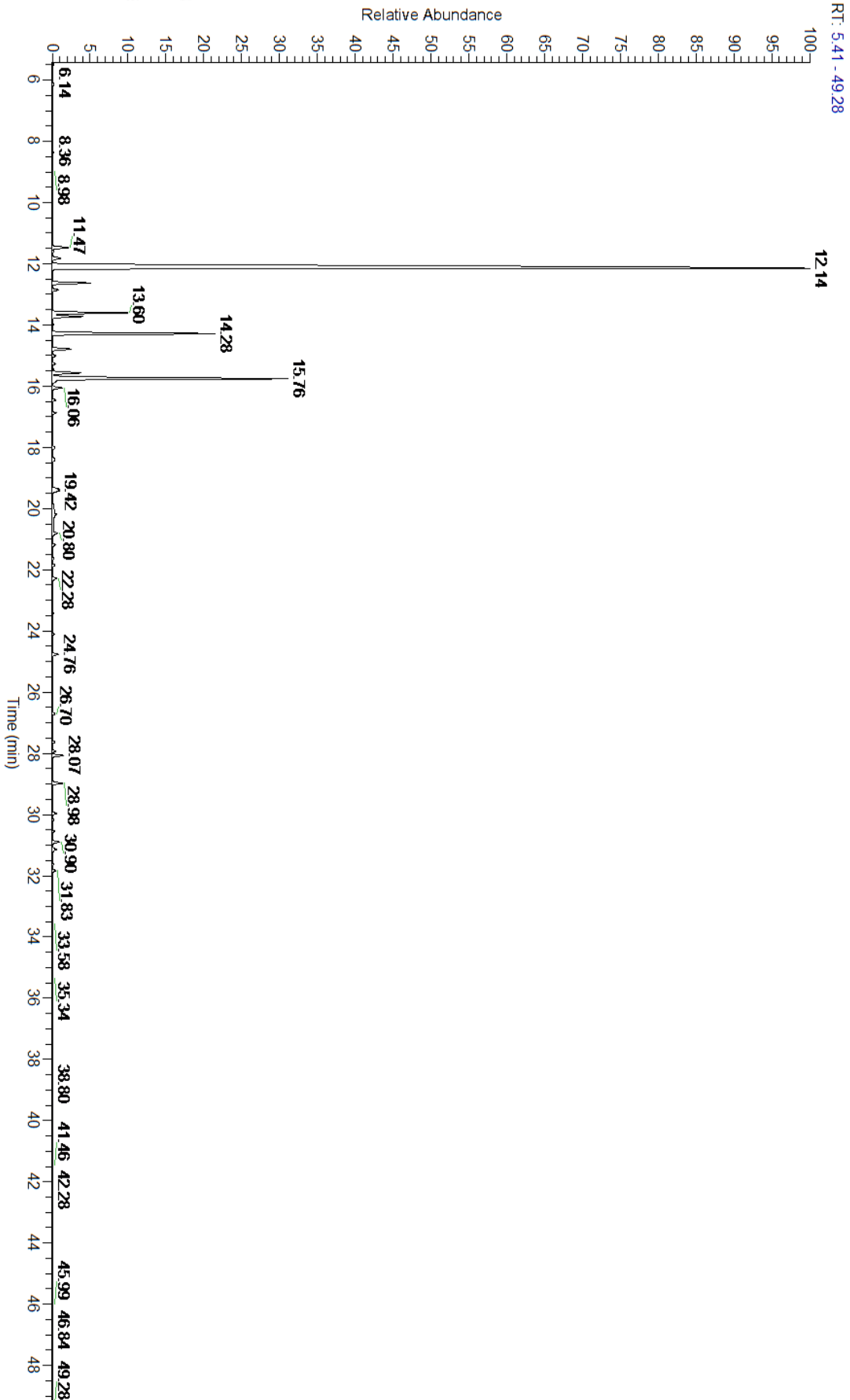
A fresh sample of Frankincense Sacra (Boswellia Sacra) Essential Oil (10 uL in .5 to .5 mL Hexane + ETOH) was prepared and analyzed via split injection GC/EI-MS.

Main Compounds	Percentages
alpha-Pinene	61.01%
Limonene	13.09%
Myrcene	7.82%
Sabinene	3.60%
Camphene	1.80%
beta-Pinene	1.49%
para-Cymene	1.45%
alpha-Phellandrene	0.93%
Hashishene	0.84%
beta-Caryophyllene	0.54%
beta-Elemene	0.52%
alpha-Thujene	0.51%

Monoterpenes	Sesquiterpenes	Monoterpenols	Sesquiterpenols	Ketones
94.55%	2.59%	0.83%	0.02%	0.26%
Esters	Ethers	Aldehydes	Phenols	Other
0.34%	0.27%	0.42%	0.04%	0.68%



- Monoterpenes ■ Sesquiterpenes ■ Monoterpenols
- Sesquiterpenols ■ Ketones ■ Esters
- Ethers ■ Phenols ■ Other



Total Percentage		99.32%			
Peak Number	RT	Area %	Compound Name	RI	Chemical Family
1	6.14	0.04%	Toluene	765.00	Simple Phenolic
2	11.47	0.84%	Hashishene	922.00	Monoterpene
3	11.60	0.07%	Tricyclene	923.00	Monoterpene
4	11.82	0.51%	alpha-Thujene	927.80	Monoterpene
5	12.14	61.01%	alpha-Pinene	936.10	Monoterpene
6	12.63	1.80%	Camphene	950.30	Monoterpene
7	12.85	0.29%	Thuja-2,4(10)-diene	953.00	Monoterpene
8	13.60	3.60%	Sabinene	973.00	Monoterpene
9	13.73	1.49%	beta-Pinene	974.00	Monoterpene
10	14.28	7.82%	Myrcene	989.20	Monoterpene
11	14.80	0.93%	alpha-Phellandrene	1002.00	Monoterpene
12	15.01	0.14%	delta-3-Carene	1008.00	Monoterpene
13	15.27	0.12%	alpha-Terpinene	1014.00	Monoterpene
14	15.44	0.03%	meta-Cymene	1022.00	Monoterpene
15	15.57	1.45%	para-Cymene	1024.30	Monoterpene
16	15.76	13.09%	Limonene	1029.50	Monoterpene
17	15.76	Co-Eluting	beta-Phellandrene	1030.00	Monoterpene
18	15.76	Co-Eluting	1,8-Cineole	1031.80	Monoterpene Ether
19	16.06	0.48%	(Z)-beta-Ocimene	1037.80	Monoterpene
20	16.45	0.13%	(E)-beta-Ocimene	1047.70	Monoterpene
21	16.88	0.17%	gamma-Terpinene	1054.00	Monoterpene
22	18.02	0.18%	Terpinolene	1092.10	Monoterpene
23	18.12	0.01%	para-Cymenene	1092.43	Monoterpene
24	18.37	0.12%	Perillene	1099.20	Monoterpene Ether
25	18.43	0.06%	Isoamyl isovalerate	1105.60	Aliphatic Ester
26	18.69	0.01%	1,3,8-para-Menthatriene	1112.50	Monoterpene
27	19.36	0.30%	alpha-Campholenal	1125.29	Monoterpene Aldehyde
28	19.42	0.38%	Alloocimene	1129.90	Monoterpene
29	19.90	0.03%	trans-Pinocarveol	1143.75	Monoterpenol
30	20.19	0.35%	trans-Verbenol	1149.00	Monoterpenol
31	20.80	0.25%	para-Mentha-1,5-dien-8-ol	1163.00	Monoterpenol
32	21.18	0.13%	Terpinen-4-ol	1180.57	Monoterpenol
33	21.43	0.02%	para-Cymen-8-ol	1185.25	Monoterpenol
34	21.64	0.05%	alpha-Terpineol	1191.71	Monoterpenol
35	21.85	0.12%	Myrtenal	1200.43	Monoterpene Aldehyde
36	22.28	0.23%	Verbenone	1209.71	Monoterpene Ketone
37	23.41	0.03%	Carvone	1248.14	Monoterpene Ketone
38	23.68	0.01%	Linalyl acetate	1263.80	Monoterpene Ester
39	24.76	0.27%	Bornyl acetate	1288.29	Monoterpene Ester
40	26.42	0.01%	delta-Elemene	1335.83	Sesquiterpene
41	26.70	0.13%	alpha-Terpinyl acetate	1353.00	Monoterpene Ether
42	26.78	0.02%	alpha-Cubebene	1355.71	Sesquiterpene
43	27.64	0.12%	alpha-Copaene	1379.00	Sesquiterpene

