



Essential Validation Services



Sample:

Client: | Enfleurage
Sample: | Black Frankincense Sacra (Boswellia Sacra)
Batch # | BL 170209
Cas Number | 89957-98-2
Type: | Essential Oil

Conclusion:

- No adulterants, diluents, or contaminants were detected via this method.
- This oil meets the expected profile for genuine essential oil of Black Frankincense Sacra (Boswellia Sacra)

**X**

A handwritten signature in black ink, appearing to read "Adam Christen", is written over a horizontal line.

Validated By:

Essential Validation Services

747 SW 2nd Ave, Gainesville, FL 32601

Phone: 317-361-5044 E-mail: Adam@essentialvalidationservices.com

Summary of Analyses

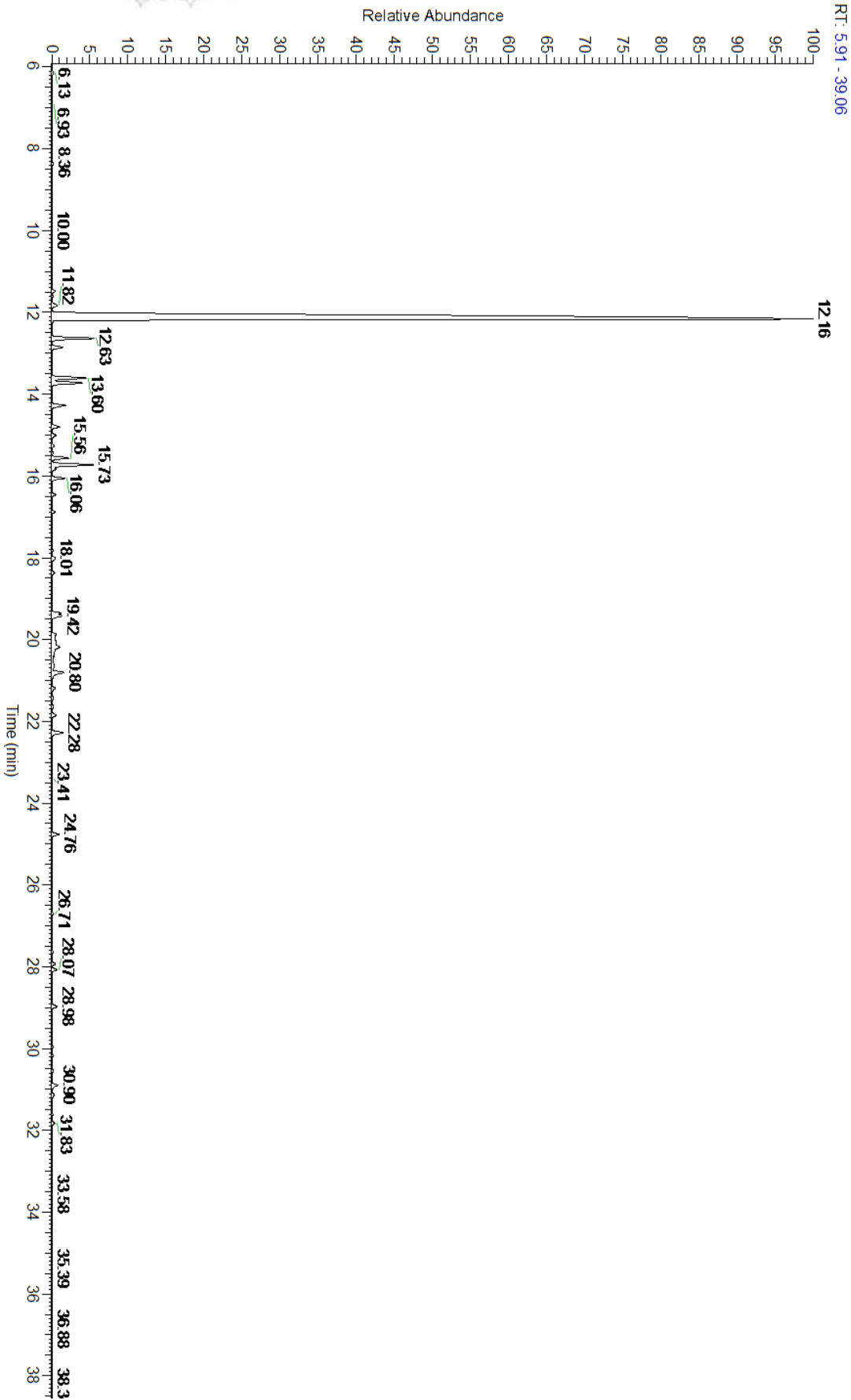
A fresh sample of Frankincense Sacra (Boswellia Sacra) Essential Oil (10 uL in .5to.5 mL Hexane + ETOH) was prepared and analyzed via split injection GC/EI-MS.

Main Compounds	Percentages
alpha-Pinene	78.22%
Limonene	2.40%
Camphene	2.28%
Sabinene	1.84%
beta-Pinene	1.72%
para-Cymene	0.91%
UK (M/Z:43,58,59,65,67,77,	0.88%
Myrcene	0.80%
para-Mentha-1,5-dien-8-ol	0.76%
Verbenone	0.70%
(Z)-beta-Ocimene	0.69%
Alloocimene	0.67%
Thuja-2,4(10)-diene	0.61%

Monoterpenes	Sesquiterpenes	Monoterpenols	Sesquiterpenols	Ketones
92.38%	1.90%	1.63%	0.00%	1.12%
Esters	Ethers	Aldehydes	Phenols	Other
0.39%	0.33%	0.68%	0.06%	1.51%



- Monoterpenes ■ Sesquiterpenes ■ Monoterpenols
- Sesquiterpenols ■ Ketones ■ Esters
- Ethers ■ Phenols ■ Other



Total Percentage		98.49%			
Peak Number	RT	Area %	Compound Name	RI	Chemical Family
1	6.15	0.06%	Toluene	765.00	Simple Phenolic
2	11.48	0.20%	Hashishene	922.00	Monoterpene
3	11.60	0.07%	Tricyclene	923.00	Monoterpene
4	11.82	0.39%	alpha-Thujene	927.80	Monoterpene
5	12.16	78.22%	alpha-Pinene	936.10	Monoterpene
6	12.30	0.03%	alpha-Fenchene	946.00	Monoterpene
7	12.63	2.28%	Camphene	950.30	Monoterpene
8	12.85	0.61%	Thuja-2,4(10)-diene	953.00	Monoterpene
9	13.60	1.84%	Sabinene	973.00	Monoterpene
10	13.73	1.72%	beta-Pinene	974.00	Monoterpene
11	14.27	0.80%	Myrcene	989.20	Monoterpene
12	14.80	0.44%	alpha-Phellandrene	1002.00	Monoterpene
13	15.01	0.24%	delta-3-Carene	1008.00	Monoterpene
14	15.26	0.11%	alpha-Terpinene	1014.00	Monoterpene
15	15.44	0.08%	meta-Cymene	1022.00	Monoterpene
16	15.56	0.91%	para-Cymene	1024.30	Monoterpene
17	15.73	2.40%	Limonene	1029.50	Monoterpene
18	15.73	Co-Eluting	beta-Phellandrene	1030.00	Monoterpene
19	15.83	0.23%	1,8-Cineole	1031.80	Monoterpene Ether
20	16.06	0.69%	(Z)-beta-Ocimene	1037.80	Monoterpene
21	16.45	0.19%	(E)-beta-Ocimene	1047.70	Monoterpene
22	16.88	0.16%	gamma-Terpinene	1054.00	Monoterpene
23	17.82	0.07%	Terpinolene	1092.10	Monoterpene
24	18.01	0.26%	para-Cymenene	1092.43	Monoterpene
25	18.37	0.17%	Linalool	1099.00	Monoterpenol
26	19.36	0.43%	alpha-Campholenal	1125.29	Monoterpene Aldehyde
27	19.42	0.67%	Alloocimene	1129.90	Monoterpene
28	19.87	0.36%	alpha-Pinocarveol	1143.75	Monoterpenol
29	20.06	0.32%	Camphor	1147.55	Monoterpene Ketone
30	20.18	0.88%	UK (M/Z:43,58,59,65,67,77,79,81		
31	20.67	0.08%	Pinocamphone	1172.00	Monoterpene Ketone
32	20.80	0.76%	para-Mentha-1,5-dien-8-ol	1163.00	Monoterpenol
33	21.19	0.18%	Terpinen-4-ol	1180.57	Monoterpenol
34	21.42	0.07%	para-Cymen-8-ol	1185.25	Monoterpenol
35	21.64	0.09%	alpha-Terpineol	1191.71	Monoterpenol
36	21.85	0.25%	Myrtenal	1200.43	Monoterpene Aldehyde
37	22.28	0.70%	Verbenone	1209.71	Monoterpene Ketone
38	23.41	0.02%	Carvone	1248.14	Monoterpene Ketone
39	24.76	0.39%	Bornyl acetate	1288.29	Monoterpene Ester
40	26.71	0.07%	alpha-Terpinyl acetate	1353.00	Monoterpene Ether
41	26.79	0.01%	alpha-Cubebene	1355.71	Sesquiterpene
42	27.63	0.07%	alpha-Copaene	1379.00	Sesquiterpene
43	27.93	0.20%	beta-Bourbonene	1388.70	Sesquiterpene

