



316 Old Hickory Blvd East, Madison, TN 37115

tel (615)612-4270 fax (615)860-9171

sold@naturesgift.com

Balancing Body, Mind and Spirit with Pure Essential Oils

Since 1995

www.naturesgift.com

Frankincense (Serrata)

Boswellia serrata

Batch #IN-59015

India

Monoterpenes	94.69%	Monoterpenols	1.52%	Ketones	0.25%
α thujene	43.99	linalool	0.98	α thujone	0.18
δ-3- carene	11.90	terpinen-4-ol	0.31	β thujone	0.02
sabinene	7.14	trans-sabinene hydrate	0.06	fenchone	0.05
limonene	6.60	cis-sabinol	0.04	6-menthyl-3,5-heptadien-2-one	0.03
α pinene	6.28	α terpineol	0.04		
para cymene	5.46	(E) para-mentha-1,(7),8-dien-2-ol	0.04	Phenols	1.34%
β pinene	3.55	para-mentha-1,5-dien-8-ol	0.02	methyl chavicol	1.31
γ terpinene	3.15	(Z) para-menth-2-en-1-ol	0.01	methyl eugenol	0.03
myrcene	2.64	trans-verbenol	0.01	elemicin	
α phellandrene	2.57	para-cymen-8-ol	0.01	toluene	
α terpinene	0.36				
thuja-2,4(10)-diene	0.25	Esters	0.02%		
(Z) β ocimene	0.14	α-terpinyl acetate	0.01	Sesquiterpenes	0.3%
camphene	0.12	linalyl acetate	0.01	β bourbonene	0.18
terpinolene	0.12			α copaene	0.04
(E) β ocimene	0.11	Ethers	0.54%	longifolene	0.03
hashishene	0.11	1,8 cineole	0.31	germacrene D	0.02
pseudolimonene	0.1	1,4 cineole	0.19	trans-α-bergamotene	0.01
2-carene	0.07	kessane	0.04	β copaene	0.01
allo ocimene	0.03	α pinene oxide	0.01	γ muurolene	0.01
bornylene	0.01				
Aldehydes	0.05%				
(Z) isocitral	0.04				
(E) isocitral	0.01				


Raw Material: resin

Botanical Name: *Boswellia serrata*

Production Method: Steam distillation

Date of Analysis: 2/10/2020

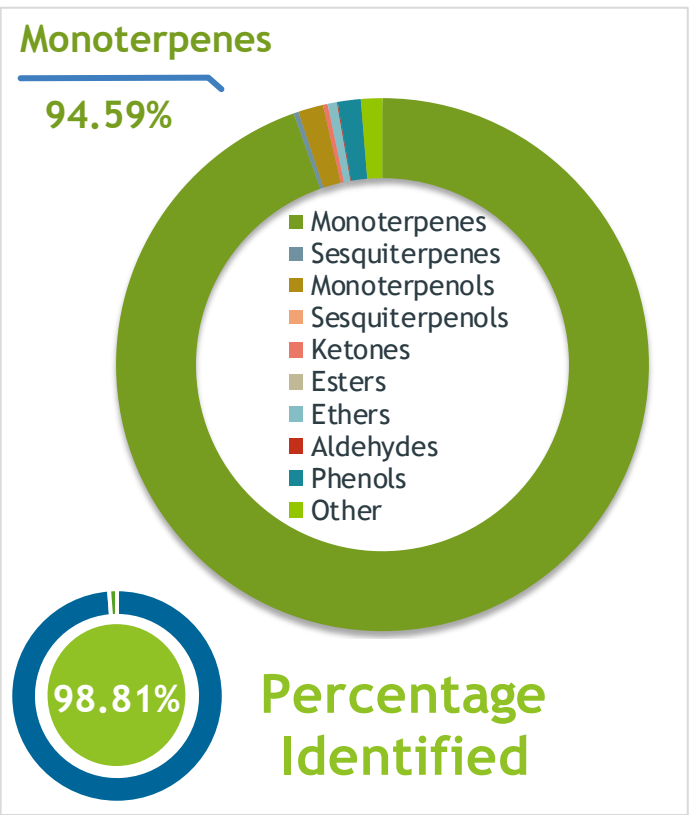
Frankincense (*Boswellia serrata*)
IN-59015

Client  **Source** 

Sample Frankincense (*Boswellia serrata*)
Batch #:..... | IN-59015
Type:..... | Essential Oil
CAS Number:... | 97952-72-2
Nature's Gift

Client  **Website** 

Primary 43.99% | alpha-Thujene
11.90% | delta-3-Carene
7.14% | Sabinene



Result 

Conclusion No adulterants, Diluents, or contaminants were detected via this method. This oil meets the expected profile for genuine Essential Oil of Frankincense (*Boswellia serrata*)
Internal Number: | EVS-3513


Essential Validation Services
747 SW 2nd Ave IMB 12 Suite 306
Gainesville, FL 32601
317.361.5044 | <https://essentialvalidationservices.com/>
adam@essentialvalidationservices.com


Monoterpenes	94.59%	94.59%
Sesquiterpenes		0.30%
Monoterpenols		1.52%
Sesquiterpenols		0.00%
Ketones		0.28%
Esters		0.02%
Ethers		0.55%
Aldehydes		0.05%
Phenols		1.39%
Other		1.30%

ESSENTIAL VALIDATION SERVICES | 747 SW 2ND AVE GAINESVILLE, FLORIDA 32601 | 317-361-5044

- Essential Oil testing is performed by using qualitative GC-MS. Method: SOP.T.01 Client Method
- This report may not be published without the consent of Essential Validation Services.
- Chromatograph image may be requested
- This report is valid for 1 year from the analyzed date

Client



Source

Frankincense (*Boswellia serrata*)

IN-59015

Total Percentage		98.81%		
Number	RT	Area %	Compound Name	Chemical Family
1	3.84	0.05%	Toluene	Simple Phenolic
2	7.77	0.01%	Bornylene	Monoterpene
3	8.24	0.11%	Hashishene	Monoterpene
4	8.54	43.99%	alpha-Thujene	Monoterpene
5	8.76	6.28%	alpha-Pinene	Monoterpene
6	9.17	0.25%	Thuja-2,4(10)-diene	Monoterpene
7	9.38	0.12%	Camphene	Monoterpene
8	10.36	7.14%	Sabinene	Monoterpene
9	10.53	3.55%	beta-Pinene	Monoterpene
10	11.11	2.64%	Myrcene	Monoterpene
11	11.49	0.07%	2-Carene	Monoterpene
12	11.68	0.10%	Pseudolimonene	Monoterpene
13	11.79	2.57%	alpha-Phellandrene	Monoterpene
14	11.92	11.90%	delta-3-Carene	Monoterpene
15	12.18	0.19%	1,4-Cineole	Monoterpene Ether
16	12.26	0.36%	alpha-Terpinene	Monoterpene
17	12.61	5.46%	para-Cymene	Monoterpene
18	12.83	6.60%	Limonene	Monoterpene
19	12.92	0.31%	1,8-Cineole	Monoterpene Ether
20	13.18	0.14%	(Z)-beta-Ocimene	Monoterpene
21	13.65	0.11%	(E)-beta-Ocimene	Monoterpene
22	14.15	3.15%	gamma-Terpinene	Monoterpene
23	14.66	0.06%	trans-Sabinene hydrate	Monoterpenol
24	15.39	0.12%	Terpinolene	Monoterpene
25	15.47	0.05%	Fenchone	Monoterpene Ketone
26	15.94	0.01%	alpha-Pinene oxide	Monoterpene Ether
27	16.10	0.98%	Linalool	Monoterpenol
28	16.32	0.02%	beta-Thujone	Monoterpene Ketone
29	16.65	0.03%	6-Methyl-3,5-heptadien-2-one	Monoterpene Ketone
30	16.85	0.18%	alpha-Thujone	Monoterpene Ketone
31	17.18	0.01%	cis-para-Menth-2-en-1-ol	Monoterpenol
32	17.42	0.03%	Alloocimene	Monoterpene
33	17.88	0.04%	cis-Sabinol	Monoterpenol
34	18.15	0.01%	trans-Verbenol	Monoterpenol
35	18.94	0.02%	para-Mentha-1,5-dien-8-ol	Monoterpenol

ESSENTIAL VALIDATION SERVICES | 747 SW 2ND AVE GAINESVILLE, FLORIDA 32601 | 317-361-5044

- Essential Oil testing is performed by using qualitative GC-MS. Method: SOP.T.01 Client Method
 - This report may not be published without the consent of Essential Validation Services.
 - Chromatograph image may be requested
 - This report is valid for 1 year from the analyzed date

