

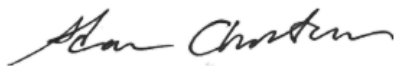
Sample:

Client: | Nature's Gift
Sample: | Frankincense Carteri (Boswellia Carterii)
Batch # | SO-20430
CAS Number | 8016-36-2
Type: | Essential Oil

Conclusion:

- No adulterants, diluents, or contaminants were detected via this method.
- This oil meets the expected profile for genuine essential oil of Frankincense Carteri (Boswellia Carterii).

X



Validated By:



Essential Validation Services

747 SW 2nd Ave, Gainesville, FL 32601

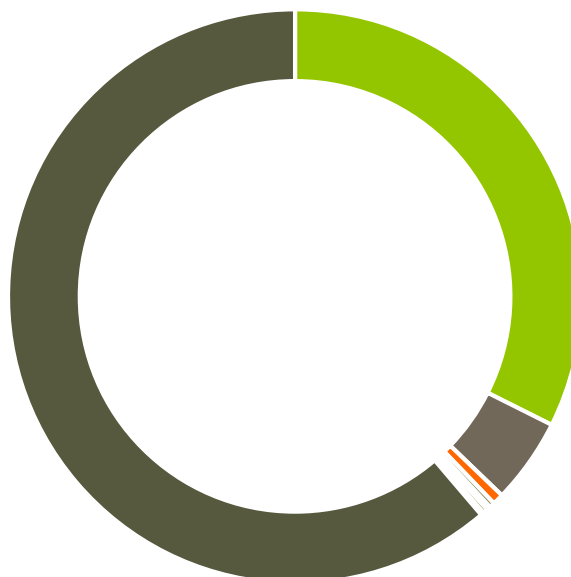
Phone: 317-361-5044 E-mail: Adam@essentialvalidationservices.com

Summary of Analyses

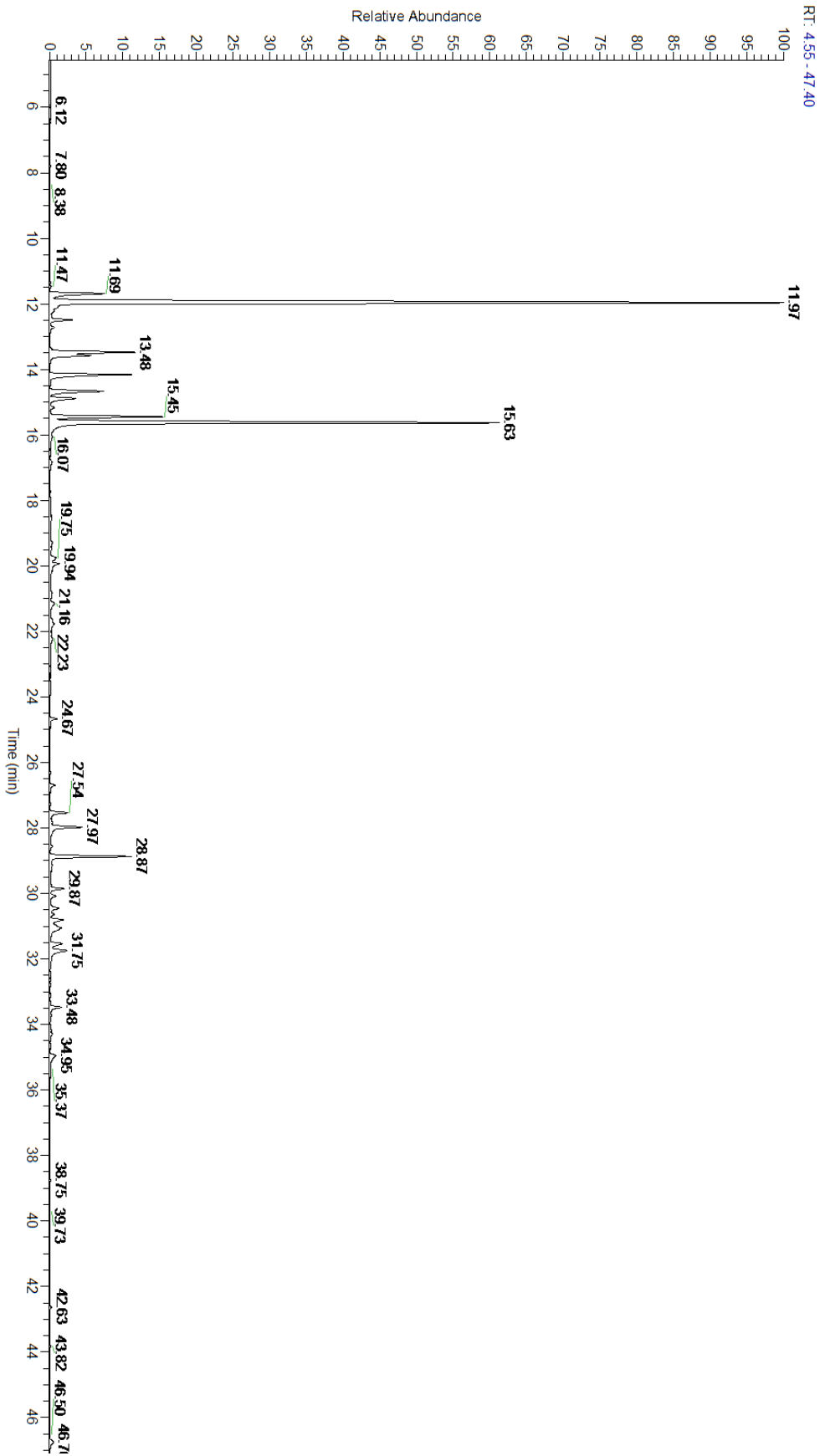
A fresh sample Frankincense Carteri (Boswellia Carterii) Essential Oil (10 uL in .5to.5 mL Hexane + ETOH) was prepared and analyzed via split injection GC/EI-MS.

Main Compounds	Percentages
alpha-Pinene	37.99%
Limonene	21.42%
para-Cymene	4.62%
Myrcene	3.84%
Sabinene	3.68%
beta-Caryophyllene	3.51%
alpha-Thujene	2.81%
alpha-Phellandrene	2.66%
beta-Pinene	2.00%
beta-Elemene	1.74%
delta-3-Carene	1.35%
alpha-Selinene	1.17%
delta-Cadinene	1.15%

Monoterpenes	Sesquiterpenes	Monoterpenols	Sesquiterpenols	Ketones
81.94%	12.16%	1.58%	0.77%	0.22%
Esters	Ethers	Aldehydes	Phenols	Other
0.32%	0.66%	0.44%	0.00%	1.91%



- Monoterpenes ■ Sesquiterpenes ■ Monoterpenols
- Sesquiterpenols ■ Ketones ■ Esters
- Ethers ■ Phenols ■ Other



Total Percentage		98.47%			
Peak Number	RT	Area %	Compound Name	RI	Chemical Family
1	11.35	0.04%	Hashishene	922.00	Monoterpene
2	11.47	0.05%	Tricyclene	923.00	Monoterpene
3	11.69	2.81%	alpha-Thujene	927.80	Monoterpene
4	11.97	37.99%	alpha-Pinene	936.10	Monoterpene
5	12.49	0.84%	Camphene	950.30	Monoterpene
6	12.72	0.16%	Thuja-2,4(10)-diene	953.00	Monoterpene
7	13.38	0.05%	Verbenene	961.00	Monoterpene
8	13.48	3.68%	Sabinene	973.00	Monoterpene
9	13.58	2.00%	beta-Pinene	974.00	Monoterpene
10	14.16	3.84%	Myrcene	989.20	Monoterpene
11	14.66	2.66%	alpha-Phellandrene	1002.00	Monoterpene
12	14.89	1.35%	delta-3-Carene	1008.00	Monoterpene
13	15.16	0.18%	alpha-Terpinene	1014.00	Monoterpene
14	15.45	4.62%	para-Cymene	1024.30	Monoterpene
15	15.63	21.42%	Limonene	1029.50	Monoterpene
16	16.09	0.02%	(Z)-beta-Ocimene	1037.80	Monoterpene
17	16.83	0.16%	gamma-Terpinene	1054.00	Monoterpene
18	17.99	0.03%	Terpinolene	1092.10	Monoterpene
19	18.04	0.02%	para-Cymenene	1092.43	Monoterpene
20	18.48	0.08%	Linalool	1099.00	Monoterpenol
21	19.29	0.10%	alpha-Campholene aldehyde	1125.29	Monoterpene Aldehyde
22	19.48	0.02%	Alloocimene	1129.90	Monoterpene
23	19.75	0.36%	trans-Pinocarveol	1143.75	Monoterpenol
24	19.94	0.48%	trans-Verbenol	1149.00	Monoterpenol
25	20.51	0.01%	Trans-Pinocamphone	1162.33	Monoterpene Ketone
26	20.84	0.14%	para-Mentha-1,5-dien-8-ol	1163.00	Monoterpenol
27	21.16	0.35%	Terpinen-4-ol	1180.57	Monoterpenol
28	21.64	0.12%	alpha-Terpineol	1191.71	Monoterpenol
29	21.78	0.34%	Myrtenal	1200.43	Monoterpene Aldehyde
30	22.23	0.20%	Verbenone	1209.71	Monoterpene Ketone
31	22.73	0.05%	trans-Carveol	1223.14	Monoterpenol
32	23.66	0.01%	Carvone	1248.14	Monoterpene Ketone
33	24.67	0.32%	Bornyl acetate	1288.29	Monoterpene Ester
34	26.32	0.03%	delta-Elemene	1335.83	Sesquiterpene
35	26.70	0.28%	alpha-Cubebene	1355.71	Sesquiterpene
36	27.54	0.87%	alpha-Copaene	1379.00	Sesquiterpene
37	27.83	0.09%	beta-Bourbonene	1388.70	Sesquiterpene
38	27.97	1.74%	beta-Elemene	1389.20	Sesquiterpene
39	28.57	0.09%	alpha-Gurjunene	1412.00	Sesquiterpene
40	28.87	3.51%	beta-Caryophyllene	1427.14	Sesquiterpene
41	29.26	0.10%	trans-alpha-Bergamotene	1435.00	Sesquiterpene
42	29.58	0.01%	beta-Copaene	1445.00	Sesquiterpene
43	29.75	0.03%	trans-Muurola-3,5-diene	1456.75	Sesquiterpene

