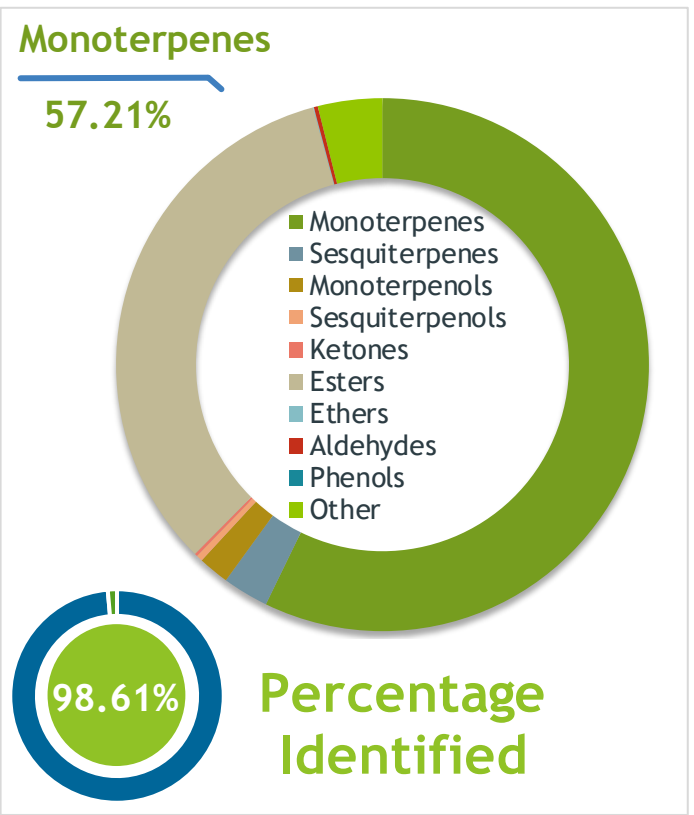


Client  **Source** 

Siberian Fir (Abies sibirica)
RU-58881

Sample Siberian Fir (Abies sibirica)
 Batch #:..... RU-58881
 Type:..... Essential Oil
 CAS Number:... 8021-28-1
 Nature's Gift



Client  **Website** 

Primary

33.11% Bornyl acetate
20.89% Camphene
11.22% alpha-Pinene

Result 

Conclusion No adulterants, diluents, or contaminants were detected via this method. This oil meets the expected profile for genuine essential oil of Siberian Fir (Abies sibirica)

Internal Number: | EVS-2694


Essential Validation Services
 747 SW 2nd Ave IMB 12 Suite 306
 Gainesville, FL 32601
 317.361.5044 | essentialvalidationservices.com
 adam@essentialvalidationservices.com


Monoterpenes	57.21%	57.21%
Sesquiterpenes		2.79%
Monoterpenols		1.87%
Sesquiterpenols		0.39%
Ketones		0.17%
Esters	33.37%	33.37%
Ethers		0.05%
Aldehydes		0.24%
Phenols		0.00%
Other		3.91%

ESSENTIAL VALIDATION SERVICES | 747 SW 2ND AVE GAINESVILLE, FLORIDA 32601 | 317-361-5044

Client



Source



Siberian Fir (*Abies sibirica*)
RU-58881

Total Percentage		98.61%			
Number	RT	Area %	Compound Name	RI	Chemical Family
1	10.98	2.52%	Santene	884.00	Normonoterpene
2	12.50	2.18%	Tricyclene	923.00	Monoterpene
3	12.73	0.07%	alpha-Thujene	927.80	Monoterpene
4	13.02	11.22%	alpha-Pinene	936.10	Monoterpene
5	13.67	20.89%	Camphene	950.30	Monoterpene
6	14.82	1.88%	beta-Pinene	974.00	Monoterpene
7	15.41	0.54%	Myrcene	989.20	Monoterpene
8	15.98	0.19%	alpha-Phellandrene	1002.00	Monoterpene
9	16.25	10.79%	delta-3-Carene	1008.00	Monoterpene
10	16.49	0.11%	alpha-Terpinene	1014.00	Monoterpene
11	16.82	0.12%	para-Cymene	1024.30	Monoterpene
12	17.02	7.78%	Limonene	1029.50	Monoterpene
13	17.03	Co-Eluting	beta-Phellandrene	1030.00	Monoterpene
14	18.25	0.15%	gamma-Terpinene	1054.00	Monoterpene
15	19.47	1.29%	Terpinolene	1092.10	Monoterpene
16	21.72	0.17%	Camphor	1147.55	Monoterpene Ketone
17	22.53	1.59%	Borneol	1168.71	Monoterpenol
18	22.96	0.10%	Terpinen-4-ol	1180.57	Monoterpenol
19	23.44	0.18%	alpha-Terpineol	1191.71	Monoterpenol
20	24.98	0.05%	Methyl Thymol	1234.57	Monoterpene Ether
21	26.97	33.11%	Bornyl acetate	1288.29	Monoterpene Ester
22	30.01	0.26%	Geranyl acetate	1379.20	Monoterpene Ester
23	30.85	0.24%	Dodecanal	1397.80	Aliphatic Aldehyde
24	31.11	0.14%	Longifolene	1403.83	Sesquiterpene
25	31.51	1.48%	beta-Caryophyllene	1427.14	Sesquiterpene
26	32.58	0.85%	alpha-Humulene	1461.43	Sesquiterpene
27	34.10	0.24%	beta-Bisabolene	1509.86	Sesquiterpene
28	34.83	0.08%	trans-gamma-Bisabolene	1535.65	Sesquiterpene
29	35.67	0.03%	(Z)-Nerolidol	1542.25	Sesquiterpenol
30	39.26	0.36%	epi-alpha-Bisabolol	1684.86	Sesquiterpenol

ESSENTIAL VALIDATION SERVICES | 747 SW 2ND AVE GAINESVILLE, FLORIDA 32601 | 317-361-5044

Client



Source



Siberian Fir (*Abies sibirica*)
RU-58881

Number	RT	Area %	Compound Name	RI	Chemical Family

ESSENTIAL VALIDATION SERVICES | 747 SW 2ND AVE GAINESVILLE, FLORIDA 32601 | 317-361-5044