



Sample:

Client: | Nature's Gift
Sample: | Eucalyptus Radiata (Eucalyptus radiata)
Batch # | AU-29594
CAS Number | 92201-64-4
Type: | Essential Oil

Conclusion:

- No adulterants, diluents, or contaminants were detected via this method.



X *Adam Christen*

Validated By:

Essential Validation Services

747 SW 2nd Ave, Gainesville, FL 32601

Phone: 317-361-5044 E-mail: Adam@essentialvalidationservices.com

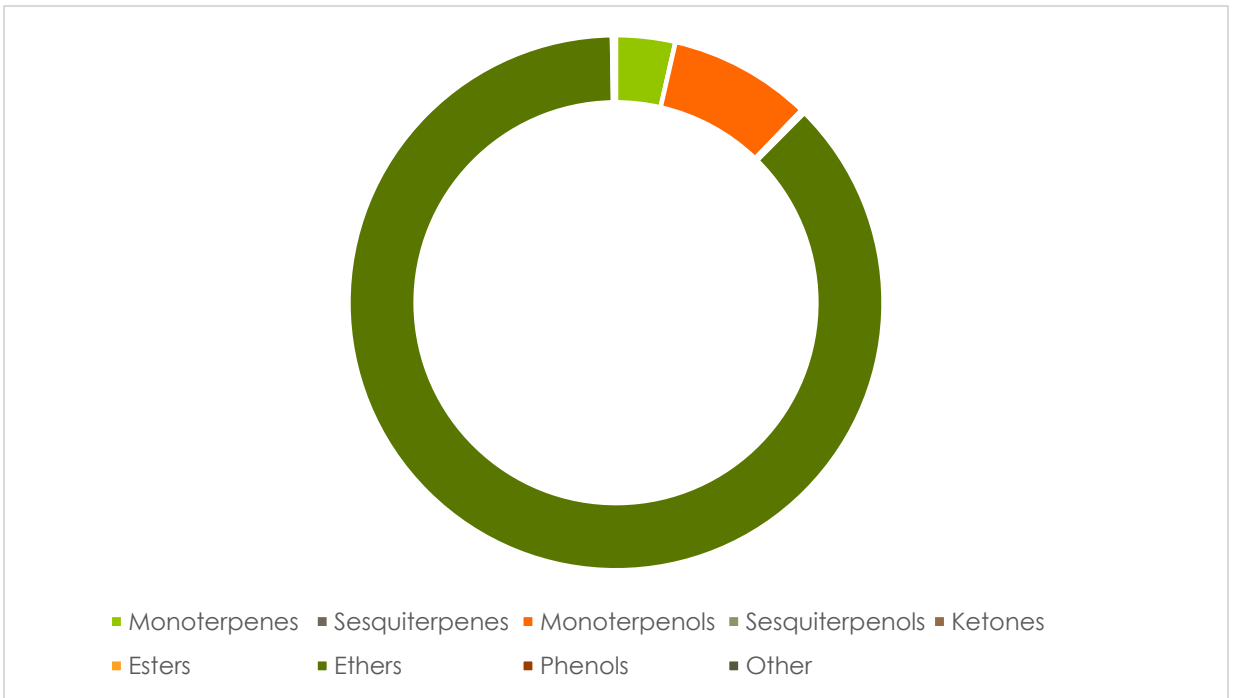
Summary of Analyses

A fresh sample of Eucalyptus Radiata (Eucalyptus radiata) Essential Oil (10 uL in .5to.5 mL Hexane + ETOH) was prepared and analyzed via split injection GC/EI-MS.



Main Compounds	Percentages
1,8-Cineole	86.06%
alpha-Terpineol	7.68%
Sabinene	1.20%
alpha-Pinene	1.19%
alpha-Terpinyl acetate	1.12%
Terpinen-4-ol	0.64%
Myrcene	0.52%

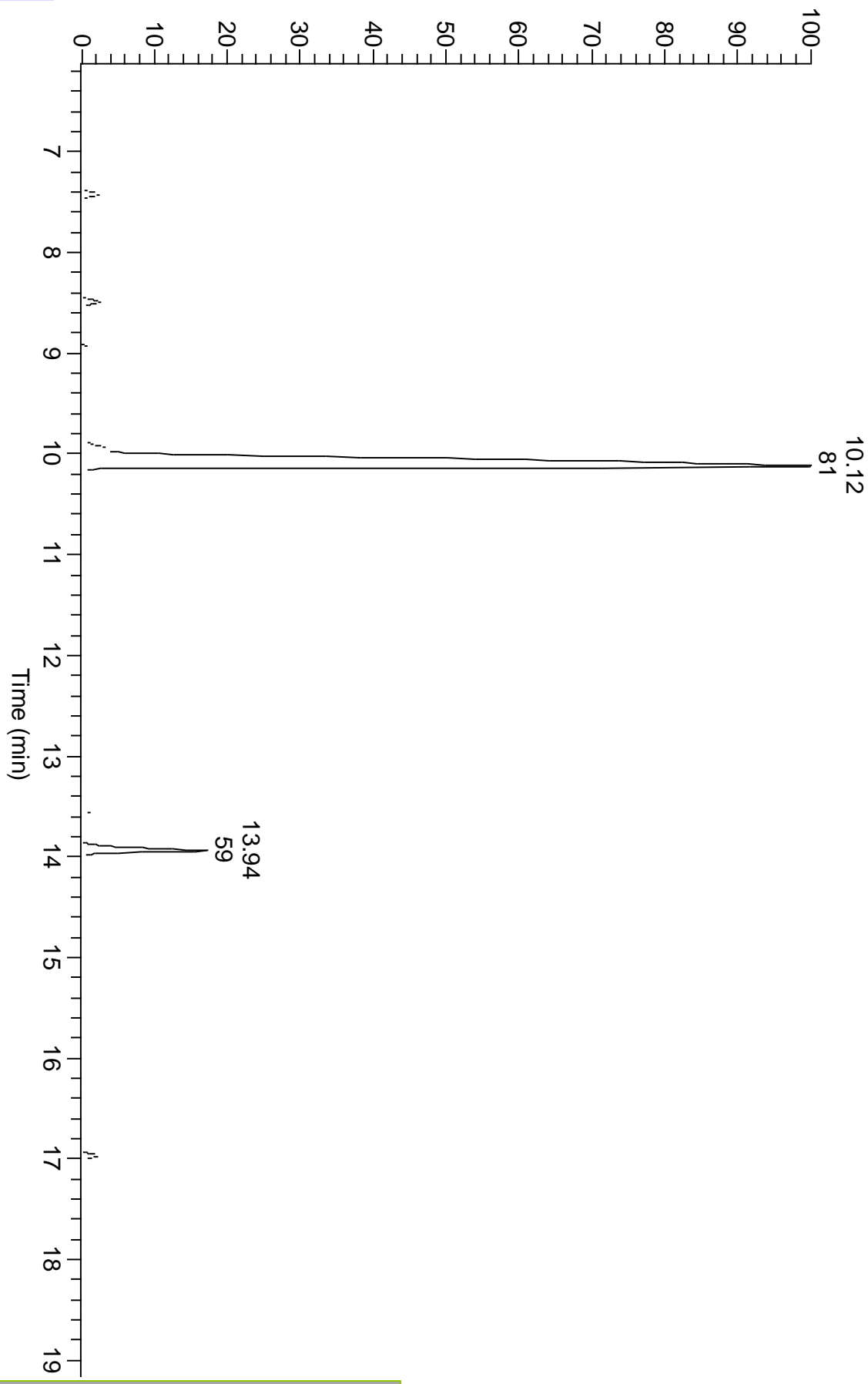
Monoterpenes	Sesquiterpenes	Monoterpenols	Sesquiterpenols	Ketones
3.56%	0.03%	8.61%	0.00%	0.22%
Esters	Ethers	Aldehydes	Phenols	Other
0.03%	87.22%	0.25%	0.00%	0.00%



ESSENTIAL VALIDATION SERVICES | 747 SW 2ND AVE GAINESVILLE, FLORIDA 32601 | 317-361-5044



RT: 6.12 - 19.25



ESSENTIAL VALIDATION SERVICES | 747 SW 2ND AVE GAINESVILLE, FLORIDA 32601 | 317-361-5044

Total Percentage	99.91%				
Peak Number	RT	Area %	Compound Name	RI	Chemical Family
1	7.25	0.01%	alpha-Thujene	927.80	Monoterpene
2	7.42	1.19%	alpha-Pinene	936.10	Monoterpene
3	7.86	0.01%	Camphene	950.30	Monoterpene
4	8.49	1.20%	Sabinene	973.00	Monoterpene
5	8.60	0.44%	beta-Pinene	977.70	Monoterpene
6	8.95	0.52%	Myrcene	989.20	Monoterpene
7	9.29	0.04%	Pseudolimonene	1003.00	Monoterpene
8	9.36	0.04%	alpha-Phellandrene	1004.10	Monoterpene
9	9.65	0.01%	alpha-Terpinene	1017.10	Monoterpene
10	10.12	86.06%	1,8-Cineole	1031.80	Monoterpene Ether
11	10.12	Co-Eluting	Limonene	1029.50	Monoterpene
12	10.68	0.04%	gamma-Terpinene	1063.71	Monoterpene
13	11.36	0.01%	Terpinolene	1092.10	Monoterpene
14	11.70	0.12%	Linalool	1099.00	Monoterpenol
15	11.89	0.01%	cis-p-Menth-2-en-1-ol	1127.50	Monoterpenol
16	12.60	0.01%	trans-p-Menth-2-en-1-ol	1141.75	Monoterpenol
17	12.97	0.01%	Citronellal	1158.43	Monoterpene Aldehyde
18	13.36	0.04%	delta-Terpineol	1166.00	Monoterpenol
19	13.57	0.64%	Terpinen-4-ol	1180.57	Monoterpenol
20	13.94	7.68%	alpha-Terpineol	1191.71	Monoterpenol
21	14.84	0.11%	Neral	1246.57	Monoterpene Aldehyde
22	15.07	0.10%	Geraniol	1255.29	Monoterpenol
23	15.20	0.22%	Piperitone	1274.00	Monoterpene Ketone
24	15.47	0.13%	Geranial	1275.57	Monoterpene Aldehyde
25	15.63	0.05%	B-Citral	1274.25	Monoterpene
26	15.74	0.04%	alpha-Terpinyl acetate	1353.00	Monoterpene Ether
27	15.97	0.01%	Thymol	1288.15	Monoterpenol
28	16.30	0.02%	delta-Terpinyl acetate	1316.50	Monoterpene Ester
29	16.97	1.12%	alpha-Terpinyl acetate	1353.00	Monoterpene Ether
30	17.53	0.01%	Geranyl acetate	1370.10	Monoterpene Ester
31	17.96	0.01%	beta-Elemene	1389.20	Sesquiterpene
32	18.38	0.01%	beta-Caryophyllene	1427.14	Sesquiterpene
33	19.14	0.01%	Bicyclogermacrene	1490.71	Sesquiterpene
34	20.70	0.01%	gamma-Cadinene	1515.29	Sesquiterpene