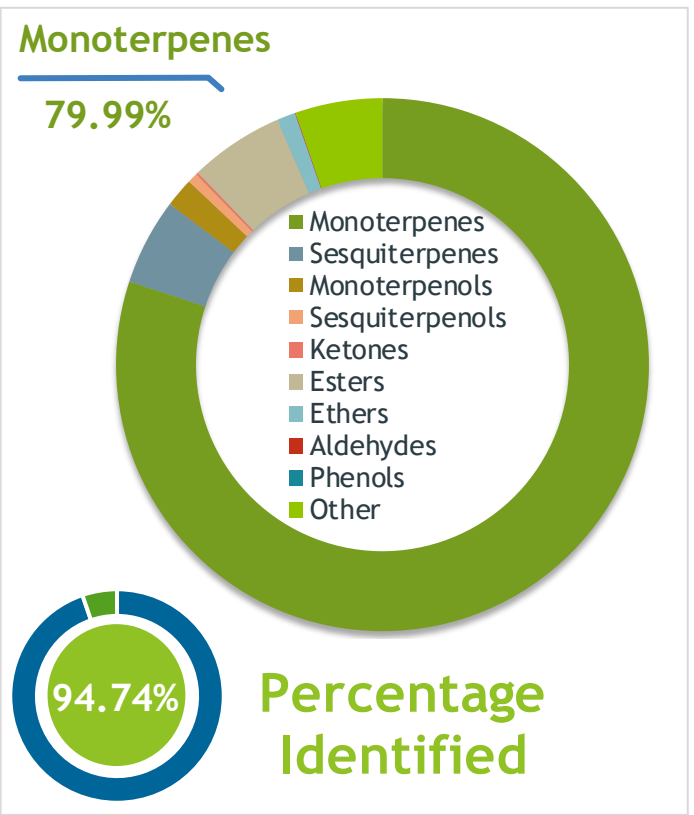


Client  **Source** 

Pinon Pine (*Pinus edulis*)
IN-58982

Sample Pinon Pine (*Pinus edulis*)
Batch #:..... | IN-58982
Type:..... | Essential Oil
CAS Number:... | N/A
Nature's Gift



Client  **Website** 

Primary

41.28% | alpha-Pinene
14.55% | beta-Phellandrene
8.41% | beta-Pinene

Result 

Conclusion No adulterants, Diluents, or contaminants were detected via this method. This oil meets the expected profile for genuine Pinon Pine (*Pinus edulis*) of Pinon Pine (*Pinus edulis*)

Internal Number: | EVS-3188


Essential Validation Services
747 SW 2nd Ave IMB 12 Suite 306
Gainesville, FL 32601
317.361.5044 |
<https://essentialvalidation.com/>
adam@essentialvalidation.com


Monoterpenes	79.99%	79.99%
Sesquiterpenes	5.23%	5.23%
Monoterpenols	1.77%	1.77%
Sesquiterpenols	0.61%	0.61%
Ketones	0.14%	0.14%
Esters	5.73%	5.73%
Ethers	1.12%	1.12%
Aldehydes	0.04%	0.04%
Phenols	0.00%	0.00%
Other	5.29%	5.29%

ESSENTIAL VALIDATION SERVICES | 747 SW 2ND AVE GAINESVILLE, FLORIDA 32601 | 317-361-5044

Client



Source

Pinon Pine (*Pinus edulis*)

IN-58982

Total Percentage		94.74%		
Number	RT	Area %	Compound Name	Chemical Family
1	7.60	0.37%	Tricyclene	Monoterpene
2	7.78	0.12%	alpha-Thujene	Monoterpene
3	8.09	41.28%	alpha-Pinene	Monoterpene
4	8.63	1.83%	Camphene	Monoterpene
5	8.79	0.06%	Thuja-2,4(10)-diene	Monoterpene
6	9.58	0.20%	Sabinene	Monoterpene
7	9.75	8.41%	beta-Pinene	Monoterpene
8	10.34	6.22%	Myrcene	Monoterpene
9	10.97	0.50%	alpha-Phellandrene	Monoterpene
10	11.08	3.28%	delta-3-Carene	Monoterpene
11	11.44	0.41%	alpha-Terpinene	Monoterpene
12	11.78	0.24%	para-Cymene	Monoterpene
13	12.06	14.55%	beta-Phellandrene	Monoterpene
14	12.38	0.59%	(Z)-beta-Ocimene	Monoterpene
15	12.84	0.07%	(E)-beta-Ocimene	Monoterpene
16	13.31	0.42%	gamma-Terpinene	Monoterpene
17	14.37	0.03%	p-Mentha-2,8-diene	Monoterpene
18	14.54	1.24%	Terpinolene	Monoterpene
19	15.21	0.07%	Ethyl heptanoate	Monoterpene Ester
20	16.03	0.08%	Fenchol	Monoterpenol
21	16.41	0.26%	Methyl octanoate	Aliphatic Ester
22	16.58	0.13%	Alloocimene	Monoterpene
23	17.00	0.07%	trans-Pinocarveol	Monoterpenol
24	17.26	0.06%	Camphor	Monoterpene Ketone
25	17.64	0.02%	Camphene hydrate	Monoterpenol
26	18.46	0.18%	Borneol	Monoterpenol
27	18.89	0.42%	Terpinen-4-ol	Monoterpenol
28	19.13	0.03%	Cryptone	Monoterpene Ketone
29	19.21	0.02%	para-Cymen-8-ol	Monoterpenol
30	19.58	0.98%	alpha-Terpineol	Monoterpenol
31	19.82	1.57%	Ethyl octanoate	Monoterpene Ester
32	20.08	0.03%	Verbenone	Monoterpene Ketone
33	20.22	0.04%	Decanal	Aliphatic Aldehyde
34	21.25	1.09%	Methyl thymol	Monoterpene Ether
35	22.23	0.02%	Piperitone	Monoterpene Ketone

ESSENTIAL VALIDATION SERVICES | 747 SW 2ND AVE GAINESVILLE, FLORIDA 32601 | 317-361-5044

Client



Source



Pinon Pine (*Pinus edulis*)
IN-58982

Number	RT	Area %	Compound Name	Chemical Family
36	23.673	3.38%	Bornyl acetate	Monoterpene Ketone
37	24.18	0.03%	trans-Pinocarvyl acetate	Monoterpene Ether
38	26.45	0.37%	alpha-Terpinyl acetate	Monoterpene Ester
39	27.38	0.04%	alpha-Ylangene	Sesquiterpene
40	27.50	0.02%	Longicyclene	Sesquiterpene
41	27.66	0.43%	alpha-Copaene	Sesquiterpene
42	27.82	0.08%	23.75 Ethyl-(4E)-decenoate	0.00
43	27.96	0.35%	beta-Bourbonene	Sesquiterpene
44	28.67	0.08%	Ethyl decanoate	Monoterpene Ester
45	28.98	0.38%	Longifolene	Sesquiterpene
46	29.45	0.16%	beta-Caryophyllene	Sesquiterpene
47	29.91	0.08%	beta-Gurjunene	Sesquiterpene
48	30.71	0.06%	cis-Muurola-3,5-diene	Sesquiterpene
49	30.94	0.02%	alpha-Humulene	Sesquiterpene
50	31.05	0.06%	(E)-beta-Farnesene	Sesquiterpene
51	31.47	0.03%	allo-Aromadendrene	Sesquiterpene
52	31.70	0.10%	trans-Cadina-1(6),4-diene	Sesquiterpene
53	31.83	0.35%	gamma-Muurolene	Sesquiterpene
54	32.02	1.00%	Germacrene D	Sesquiterpene
55	32.44	0.04%	1-epi-Bicyclosesquiphellandrene	Monoterpene
56	32.81	0.39%	alpha-Muurolene	Sesquiterpene
57	32.98	0.06%	beta-Cadinene	Sesquiterpene
58	33.16	0.06%	(E,E)-alpha-Farnesene	Sesquiterpene
59	33.35	0.36%	gamma-Cadinene	Sesquiterpene
60	33.61	1.07%	beta-Cadinene	Sesquiterpene
61	33.75	0.06%	Zonarene	Sesquiterpene
62	34.12	0.05%	trans-Cadina-1,4-diene	Sesquiterpene
63	34.29	0.08%	alpha-Cadinene	Sesquiterpene
64	34.42	0.02%	alpha-Calacorene	Sesquiterpene
65	37.78	0.04%	1-epi-Cubenol	Sesquiterpenol
66	38.39	0.25%	T-Muurolol	Sesquiterpenol
67	38.50	0.05%	alpha-Muurolol	Sesquiterpenol
68	38.81	0.27%	alpha-Cadinol	Sesquiterpenol
69	53.16	0.03%	Abietadiene	Diterpene
70				
71				

ESSENTIAL VALIDATION SERVICES | 747 SW 2ND AVE GAINESVILLE, FLORIDA 32601 | 317-361-5044