



316 Old Hickory Blvd East, Madison, TN 37115

tel (615)612-4270 fax (615)860-9171

sold@naturesgift.com

*Balancing Body, Mind and Spirit with Pure Essential Oils*

*Since 1995*

www.naturesgift.com

## Lemon

*Citrus limon*

Batch No. #IT-58887

Italy

### Monoterpenes 94.1%

limonene + $\beta$ phellandrene	68.08
$\beta$ pinene	10.87
$\gamma$ terpinene	8.34
sabinene	1.92
$\alpha$ pinene	1.90
myrcene	1.57
$\alpha$ thujene	0.46
terpinolene	0.36
para cymene	0.22
$\alpha$ terpinene	0.21
(E) $\beta$ ocimene	0.08
camphene	0.05
$\alpha$ phellandrene	0.04
(Z) $\beta$ ocimene	0.03

### Monoterpenols 0.37%

$\alpha$ terpineol	0.17
linalol	0.14
trans Sabinene hydrate	0.04
terpinen-4-ol	0.02

### Aldehydes 2.68%

geranial	1.55
neral	0.90
citronellal	0.08
nonanal	0.06
octanal	0.05
perilla aldehyde	0.04

### Sesquiterpenes 1.42%

$\beta$ bisabolene	0.63
trans $\alpha$ bergamotene	0.40
$\beta$ caryophyllene	0.24
bicyclogermacrene	0.06
$\delta$ elemene	0.03
cis $\alpha$ bergamotene	0.02
(E) $\beta$ farnesene	0.02
$\alpha$ humulene	0.01
germacrene D	0.01

### Sesquiterpenols 0.03%

$\alpha$ bisbolol	0.03
-------------------	------

### Esters 0.91%

neryl acetate	0.62
geranyl acetate	0.27
citronellol acetate	0.02

Raw Material: Rind

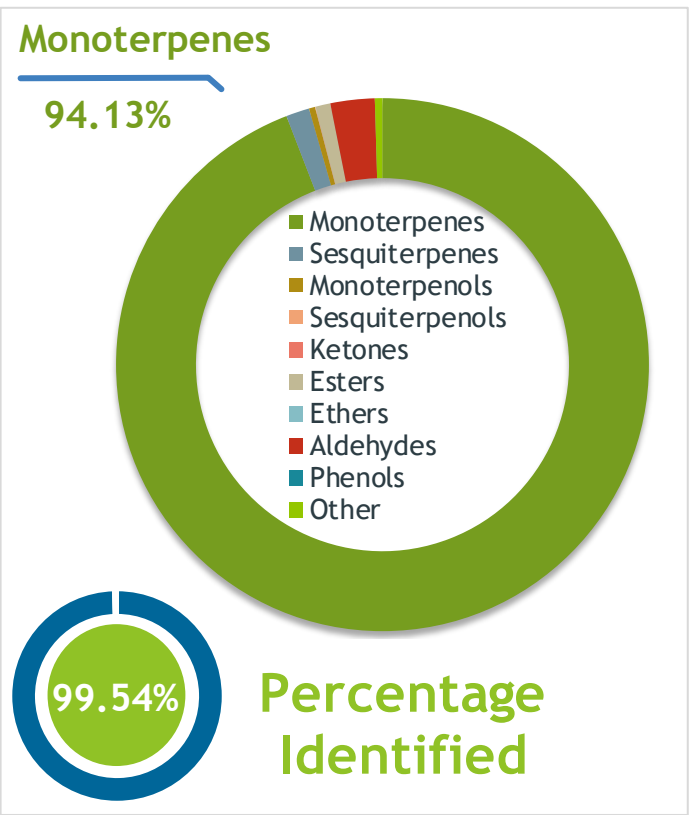
Production Method: Cold Pressed

Date of Analysis: 3/06/2019

**Client**  **Source** 

Lemon (*Citrus x limon*)  
IT-58887

**Sample** Lemon (*Citrus x limon*)  
Batch #:..... IT-58887  
Type:..... Essential  
Oil CAS Number:..8008-56-8  
**Nature's Gift**



**Client**  **Website** 

**Primary**

**68.08%** | Limonene (Co-Eluting)  
**10.87%** | beta-Pinene  
**8.34%** | gamma-Terpinene

**Result**

**APPROVED**

**Conclusion**

No adulterants, diluents, or contaminants were detected via this method. This oil meets the expected profile for genuine essential oil of Lemon (*Citrus x limon*)

Internal Number: | EVS-2693



**Essential Validation Services**

747 SW 2nd Ave IMB 12 Suite 306  
Gainesville, FL 32601

317.361.5044 | [essentialvalidationservices.com](http://essentialvalidationservices.com)  
adam@essentialvalidationservices.com

*Adam Christen*

Monoterpenes	94.13%	94.13%
Sesquiterpenes	1.42%	1.42%
Monoterpenols	0.37%	0.37%
Sesquiterpenols	0.03%	0.03%
Ketones	0.00%	0.00%
Esters	0.91%	0.91%
Ethers	0.00%	0.00%
Aldehydes	2.68%	2.68%
Phenols	0.00%	0.00%
Other	0.46%	0.46%

ESSENTIAL VALIDATION SERVICES | 747 SW 2<sup>ND</sup> AVE GAINESVILLE, FLORIDA 32601 | 317-361-5044

Client



Source



Lemon (*Citrus x limon*)  
IT-58887

Total Percentage		99.54%			
Number	RT	Area %	Compound Name	RI	Chemical Family
1	12.68	0.46%	alpha-Thujene	927.80	Monoterpene
2	12.95	1.90%	alpha-Pinene	936.10	Monoterpene
3	13.58	0.05%	Camphene	950.30	Monoterpene
4	14.65	1.92%	Sabinene	973.00	Monoterpene
5	14.78	10.87%	beta-Pinene	974.00	Monoterpene
6	15.36	1.57%	Myrcene	989.20	Monoterpene
7	15.84	0.05%	Octanal	998.00	Aliphatic Aldehyde
8	15.92	0.04%	alpha-Phellandrene	1002.00	Monoterpene
9	16.45	0.21%	alpha-Terpinene	1014.00	Monoterpene
10	16.80	0.22%	para-Cymene	1024.30	Monoterpene
11	17.09	68.08%	Limonene	1029.50	Monoterpene
12	17.10	Co-Eluting	beta-Phellandrene	1030.00	Monoterpene
13	17.31	0.03%	(Z)-beta-Ocimene	1037.80	Monoterpene
14	17.74	0.08%	(E)-beta-Ocimene	1047.70	Monoterpene
15	18.23	8.34%	gamma-Terpinene	1054.00	Monoterpene
16	18.55	0.04%	trans-Sabinene hydrate	1072.00	Monoterpenol
17	19.42	0.36%	Terpinolene	1092.10	Monoterpene
18	19.83	0.14%	Linalool	1099.00	Monoterpenol
19	20.00	0.06%	Nonanal	1104.00	Aliphatic Aldehyde
20	21.92	0.08%	Citronellal	1154.50	Monoterpene Aldehyde
21	22.94	0.02%	Terpinen-4-ol	1180.57	Monoterpenol
22	23.42	0.17%	alpha-Terpineol	1191.71	Monoterpenol
23	25.20	0.90%	Neral	1246.57	Monoterpene Aldehyde
24	26.25	1.55%	Geranial	1272.00	Monoterpene Aldehyde
25	26.47	0.04%	Perilla aldehyde	1281.00	Monoterpene Aldehyde
26	28.69	0.03%	delta-Elemene	1335.83	Sesquiterpene
27	29.02	0.02%	Citronellyl acetate	1357.83	Monoterpene Ester
28	29.40	0.62%	Neryl acetate	1362.90	Monoterpene Ester
29	30.02	0.27%	Geranyl acetate	1379.20	Monoterpene Ester
30	31.24	0.02%	cis-alpha-Bergamotene	1411.50	Sesquiterpene
31	31.51	0.24%	beta-Caryophyllene	1427.14	Sesquiterpene
32	31.89	0.40%	trans-alpha-Bergamotene	1435.00	Sesquiterpene
33	32.41	0.02%	(E)-beta-Farnesene	1456.29	Sesquiterpene
34	32.58	0.01%	alpha-Humulene	1461.43	Sesquiterpene
35	33.47	0.01%	Germacrene D	1484.71	Sesquiterpene

ESSENTIAL VALIDATION SERVICES | 747 SW 2<sup>ND</sup> AVE GAINESVILLE, FLORIDA 32601 | 317-361-5044

