

Sample:

Client: | Nature's Gift
Sample: | Lavandin Super (Lavandula x super)
Batch # | FR-58631
CAS Number | 8022-15-9
Type: | Essential Oil

Conclusion:

- No adulterants, diluents, or contaminants were detected via this method.
- This oil meets the expected profile for genuine essential oil of Lavandin Super (Lavandula x super).



X 

Validated By:

Essential Validation Services

747 SW 2nd Ave, Gainesville, FL 32601

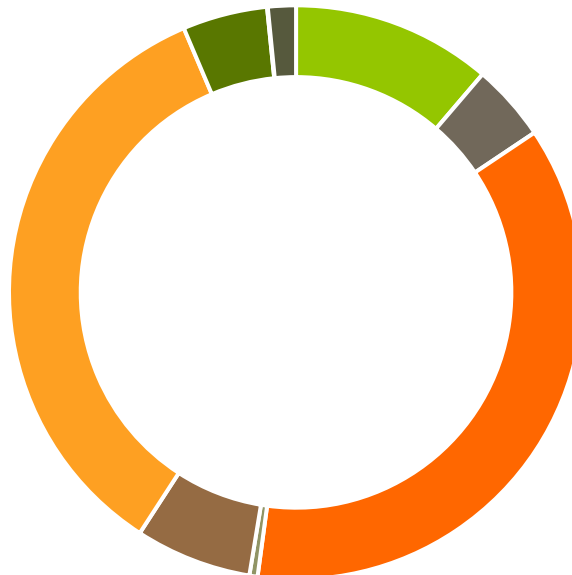
Phone: 317-361-5044 E-mail: Adam@essentialvalidationservices.com

Summary of Analyses

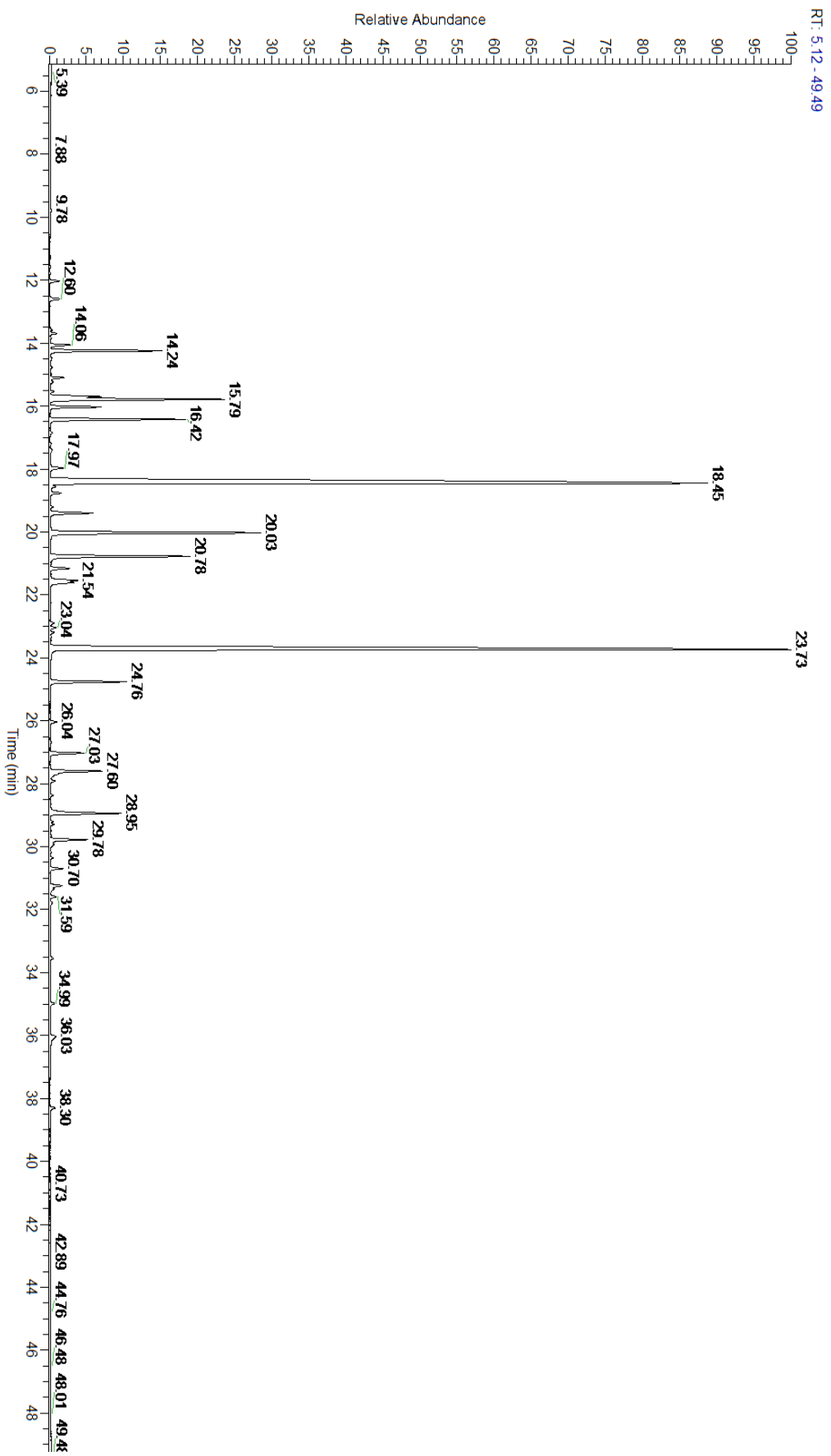
A fresh sample of Lavandin Super (Lavandula x super) Essential Oil (10 uL in .5 to .5 mL Hexane + ETOH) was prepared and analyzed via split injection GC/EI-MS.

Main Compounds	Percentages
Linalool	31.11%
Linalyl acetate	27.93%
Camphor	6.02%
1,8-Cineole	4.62%
Borneol	4.10%
(E)-beta-Ocimene	3.40%
Myrcene	2.72%
beta-Caryophyllene	2.11%
Lavandulyl acetate	1.94%
Geranyl acetate	1.72%
(Z)-beta-Ocimene	1.24%
Limonene	1.23%
Alloocimene	1.16%

Monoterpenes	Sesquiterpenes	Monoterpenols	Sesquiterpenols	Ketones
11.26%	4.35%	36.54%	0.46%	6.56%
Esters	Ethers	Aldehydes	Phenols	Other
34.44%	4.78%	0.04%	0.00%	1.58%



- Monoterpenes
- Sesquiterpenes
- Monoterpenols
- Sesquiterpenols
- Ketones
- Esters
- Ethers
- Phenols
- Other



Total Percentage		98.20%			
Peak Number	RT	Area %	Compound Name	RI	Chemical Family
1	8.19	0.02%	Methyl hexyl ether	809.00	Aliphatic Ether
2	9.42	0.01%	(Z)-3-Hexenol	850.00	Aliphatic Alcohol
3	9.78	0.04%	1-Hexanol	863.00	Aliphatic Alcohol
4	11.57	0.01%	Tricyclene	923.00	Monoterpene
5	11.79	0.01%	alpha-Thujene	927.80	Monoterpene
6	12.03	0.25%	alpha-Pinene	936.10	Monoterpene
7	12.60	0.27%	Camphene	950.30	Monoterpene
8	13.58	0.06%	Sabinene	973.00	Monoterpene
9	13.69	0.17%	beta-Pinene	974.00	Monoterpene
10	13.86	0.04%	1-Octen-3-ol	980.00	Aliphatic Alcohol
11	14.06	0.51%	Octan-3-one	981.00	Aliphatic Ketone
12	14.24	2.72%	Myrcene	989.20	Monoterpene
13	14.40	0.01%	3-Octanol	992.00	Aliphatic Alcohol
14	14.48	0.07%	Butyl butyrate	993.00	Aliphatic Ester
15	14.77	0.05%	alpha-Phellandrene	1002.00	Monoterpene
16	14.99	0.02%	delta-3-Carene	1008.00	Monoterpene
17	15.10	0.36%	Hexyl acetate	1009.00	Aliphatic Ester
18	15.24	0.09%	alpha-Terpinene	1014.00	Monoterpene
19	15.46	0.01%	meta-Cymene	1022.00	Monoterpene
20	15.53	0.09%	para-Cymene	1024.30	Monoterpene
21	15.70	1.23%	Limonene	1029.50	Monoterpene
22	15.70	Co-Eluting	beta-Phellandrene	1030.00	Monoterpene
23	15.79	4.62%	1,8-Cineole	1031.80	Monoterpene Ether
24	16.03	1.24%	(Z)-beta-Ocimene	1037.80	Monoterpene
25	16.42	3.40%	(E)-beta-Ocimene	1047.70	Monoterpene
26	16.86	0.07%	gamma-Terpinene	1054.00	Monoterpene
27	17.20	0.03%	trans-Sabinene hydrate	1072.00	Monoterpenol
28	17.39	0.10%	cis-Linalool oxide (5) (furanoid)	1075.10	Monoterpenol
29	17.97	0.41%	Terpinolene	1092.10	Monoterpene
30	18.45	31.11%	Linalool	1099.00	Monoterpenol
31	18.56	0.17%	Hexyl propanoate		
32	18.76	0.28%	Octen-3-yl acetate	1107.00	Monoterpene Ester
33	19.20	0.07%	Octan-3-yl acetate	1124.00	Aliphatic Ester
34	19.40	1.16%	Alloocimene	1129.90	Monoterpene
35	20.03	6.02%	Camphor	1147.55	Monoterpene Ketone
36	20.78	4.10%	Borneol	1168.71	Monoterpenol
37	20.78	Co-Eluting	Lavandulol	1161.50	Monoterpenol
38	21.16	0.52%	Terpinen-4-ol	1180.57	Monoterpenol
39	21.54	0.72%	Hexyl butyrate	1186.80	Aliphatic Ester
40	21.61	0.68%	alpha-Terpineol	1191.71	Monoterpenol
41	22.25	0.02%	Octyl acetate	1211.00	Aliphatic Ester
42	22.89	0.13%	Bornyl formate	1227.00	Monoterpene Ester
43	23.04	0.16%	Hexyl 2-methyl butanoate		

ESSENTIAL VALIDATION SERVICES | 747 SW 2ND AVE GAINESVILLE, FLORIDA 32601 | 317-361-5044

44	23.19	0.11%	Hexyl isovalerate	1242.00	Monoterpene Ester
45	23.33	0.04%	Cuminal	1243.00	Monoterpene Aldehyde
46	23.43	0.03%	Carvone	1248.14	Monoterpene Ketone
47	23.73	27.93%	Linalyl acetate	1263.80	Monoterpene Ester
48	24.76	1.94%	Lavandulyl acetate	1285.00	Monoterpene Ester
49	26.04	0.21%	Hexyl tiglate	1331.00	Monoterpene Ester
50	26.38	0.01%	delta-Elemene	1335.83	Sesquiterpene
51	26.69	0.04%	alpha-Terpinyl acetate	1353.00	Monoterpene Ether
52	27.03	0.88%	Neryl acetate	1362.90	Monoterpene Ester
53	27.60	1.72%	Geranyl acetate	1378.50	Monoterpene Ester
54	27.91	0.15%	beta-Bourbonene	1388.70	Sesquiterpene
55	28.03	0.01%	beta-Elemene	1389.20	Sesquiterpene
56	28.37	0.08%	Sesquithujene	1405.00	Sesquiterpene
57	28.95	2.11%	beta-Caryophyllene	1427.14	Sesquiterpene
58	29.29	0.10%	trans-alpha-Bergamotene	1435.00	Sesquiterpene
59	29.78	1.02%	(E)-beta-Farnesene	1456.29	Sesquiterpene
60	29.93	0.16%	alpha-Humulene	1461.43	Sesquiterpene
61	30.70	0.35%	Germacrene D	1484.71	Sesquiterpene
62	31.24	0.37%	Lavandulyl isovalerate		
63	31.34	0.12%	beta-Bisabolene	1509.86	Sesquiterpene
64	31.59	0.16%	gamma-Cadinene	1515.29	Sesquiterpene
65	31.79	0.07%	delta-Cadinene	1524.14	Sesquiterpene
66	32.28	0.01%	gamma-Bisabolene	1535.65	Sesquiterpene
67	33.54	0.10%	Caryophyllene oxide	1594.86	Sesquiterpene Ether
68	34.36	0.01%	1,10-di-epi-Cubenol	1612.29	Sesquiterpenol
69	34.99	0.13%	T-Cadinol	1640.43	Sesquiterpenol
70	36.03	0.32%	alpha-Bisabolol	1684.43	Sesquiterpenol