

Sample:

Client: | Nature's Gift
Sample: | Lavandin Abrial (Lavandula x Abrialis)
Batch # | FR-58669
CAS Number | 8022-15-9
Type: | Essential Oil

Conclusion:

- No adulterants, diluents, or contaminants were detected via this method.
- This oil meets the expected profile for genuine essential oil of Lavandin Abrial (Lavandula x Abrialis).



X 

Validated By:

Essential Validation Services

747 SW 2nd Ave, Gainesville, FL 32601

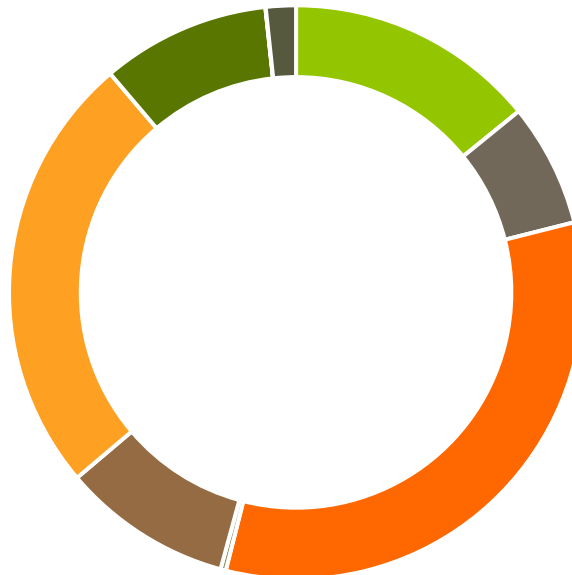
Phone: 317-361-5044 E-mail: Adam@essentialvalidationservices.com

Summary of Analyses

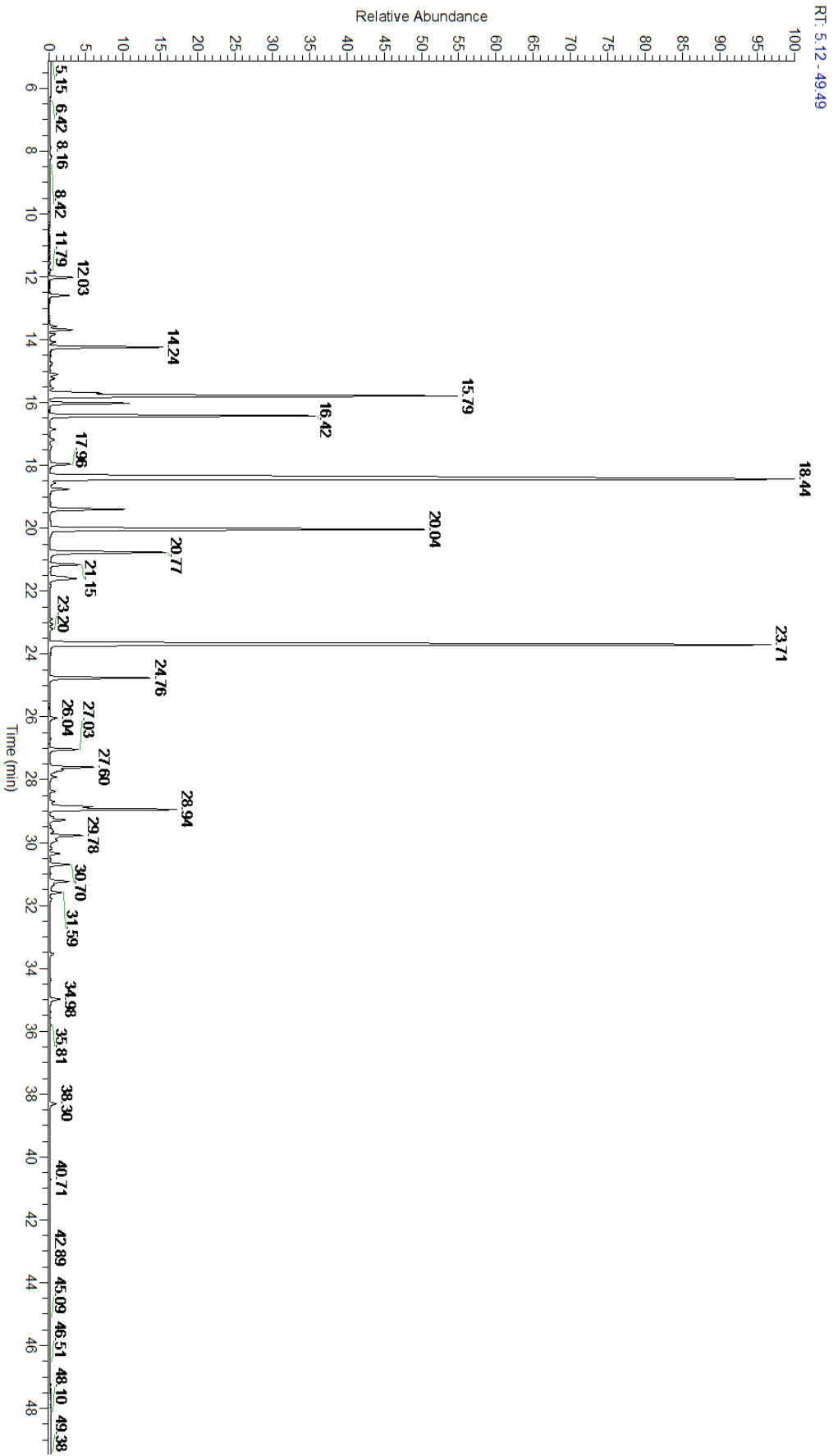
A fresh sample of Lavandin Abrial (Lavandula x Abrialis) Essential Oil (10 uL in .5to.5 mL Hexane + ETOH) was prepared and analyzed via split injection GC/EI-MS.

Main Compounds	Percentages
Linalool	27.45%
Linalyl acetate	19.88%
Camphor	9.47%
1,8-Cineole	9.31%
(E)-beta-Ocimene	5.58%
Borneol	2.98%
beta-Caryophyllene	2.97%
Myrcene	2.33%
Lavandulyl acetate	2.15%
Alloocimene	1.70%
(Z)-beta-Ocimene	1.62%
Geranyl acetate	1.04%
alpha-Terpineol	0.99%

Monoterpenes	Sesquiterpenes	Monoterpenols	Sesquiterpenols	Ketones
14.13%	6.94%	32.87%	0.30%	9.58%
Esters	Ethers	Aldehydes	Phenols	Other
24.97%	9.50%	0.02%	0.00%	1.69%



- Monoterpenes ■ Sesquiterpenes ■ Monoterpenols
- Sesquiterpenols ■ Ketones ■ Esters
- Ethers ■ Phenols ■ Other



Total Percentage		98.38%			
Peak Number	RT	Area %	Compound Name	RI	Chemical Family
1	8.16	0.05%	Methyl hexyl ether	809.00	Aliphatic Ether
2	11.57	0.02%	Tricyclene	923.00	Monoterpene
3	11.79	0.03%	alpha-Thujene	927.80	Monoterpene
4	12.03	0.51%	alpha-Pinene	936.10	Monoterpene
5	12.59	0.43%	Camphene	950.30	Monoterpene
6	13.56	0.05%	Sabinene	973.00	Monoterpene
7	13.68	0.50%	beta-Pinene	974.00	Monoterpene
8	13.81	0.06%	1-Octen-3-ol	980.00	Aliphatic Alcohol
9	14.07	0.11%	Octan-3-one	981.00	Aliphatic Ketone
10	14.24	2.33%	Myrcene	989.20	Monoterpene
11	14.45	0.01%	3-Octanol	992.00	Aliphatic Alcohol
12	14.50	0.01%	Butyl butyrate	993.00	Aliphatic Ester
13	14.75	0.06%	alpha-Phellandrene	1002.00	Monoterpene
14	15.10	0.17%	Hexyl acetate	1009.00	Aliphatic Ester
15	15.23	0.12%	alpha-Terpinene	1014.00	Monoterpene
16	15.45	0.01%	ortho-Cymene	1021.33	Monoterpene
17	15.54	0.07%	para-Cymene	1024.30	Monoterpene
18	15.70	0.97%	Limonene	1029.50	Monoterpene
19	15.70	Co-Eluting	beta-Phellandrene	1030.00	Monoterpene
20	15.79	9.31%	1,8-Cineole	1031.80	Monoterpene Ether
21	16.02	1.62%	(Z)-beta-Ocimene	1037.80	Monoterpene
22	16.42	5.58%	(E)-beta-Ocimene	1047.70	Monoterpene
23	16.85	0.13%	gamma-Terpinene	1054.00	Monoterpene
24	17.18	0.12%	trans-Sabinene hydrate	1072.00	Monoterpenol
25	17.39	0.08%	cis-Linalool oxide (5) (furanoid)	1075.10	Monoterpenol
26	17.96	0.55%	trans-Linalool oxide (5) (furanoid)	1092.20	Monoterpenol
27	18.44	27.45%	Linalool	1099.00	Monoterpenol
28	18.56	0.17%	Hexyl propanoate		
29	18.76	0.43%	Octen-3-yl acetate	1107.00	Monoterpene Ester
30	19.39	1.70%	Alloocimene	1129.90	Monoterpene
31	20.04	9.47%	Camphor	1147.55	Monoterpene Ketone
32	20.77	2.98%	Borneol	1168.71	Monoterpenol
33	20.77	Co-Eluting	Lavandulol	1161.50	Monoterpenol
34	21.15	0.70%	Terpinen-4-ol	1180.57	Monoterpenol
35	21.60	0.99%	alpha-Terpineol	1191.71	Monoterpenol
36	21.82	0.02%	Myrtenal	1200.43	Monoterpene Aldehyde
37	22.88	0.05%	Bornyl formate	1227.00	Monoterpene Ester
38	23.05	0.07%	Hexyl 2-methyl butanoate		
39	23.20	0.07%	Hexyl isovalerate	1242.00	Monoterpene Ester
40	23.71	19.88%	Linalyl acetate	1263.80	Monoterpene Ester
41	24.76	2.15%	Lavandulyl acetate	1285.00	Monoterpene Ester
42	26.04	0.19%	Hexyl tiglate	1331.00	Monoterpene Ester
43	26.38	0.01%	delta-Elemene	1335.83	Sesquiterpene



ESSENTIAL VALIDATION SERVICES | 747 SW 2nd AVE GAINESVILLE, FLORIDA 32601 | 317-361-5044

44	26.70	0.03%	alpha-Terpinyl acetate	1353.00	Monoterpene Ether
45	27.03	0.62%	Neryl acetate	1362.90	Monoterpene Ester
46	27.60	1.04%	Geranyl acetate	1378.50	Monoterpene Ester
47	27.69	0.36%	Hexyl hexanoate	1384.00	Aliphatic Ester
48	27.92	0.21%	beta-Bourbonene	1388.70	Sesquiterpene
49	28.03	0.01%	7-epi-Sesquithujene	1398.10	Sesquiterpene
50	28.36	0.11%	Sesquithujene	1405.00	Sesquiterpene
51	28.70	0.09%	cis-alpha-Bergamotene	1411.50	Sesquiterpene
52	28.86	0.93%	alpha-Santalene	1426.50	Sesquiterpene
53	28.94	2.97%	beta-Caryophyllene	1427.14	Sesquiterpene
54	29.28	0.35%	trans-alpha-Bergamotene	1435.00	Sesquiterpene
55	29.59	0.06%	beta-Copaene	1445.00	Sesquiterpene
56	29.65	0.09%	Bicyclosesquiphellandrene	1448.00	Sesquiterpene
57	29.78	0.82%	(Z)-beta-Farnesene	1453.40	Sesquiterpene
58	29.94	0.24%	alpha-Humulene	1461.43	Sesquiterpene
59	30.35	0.21%	gamma-Murolene	1478.86	Sesquiterpene
60	30.70	0.50%	Germacrene D	1484.71	Sesquiterpene
61	30.99	0.02%	alpha-Zingiberene	1491.75	Sesquiterpene
62	31.23	0.49%	UK		
63	31.41	0.03%	beta-Bisabolene	1509.86	Sesquiterpene
64	31.59	0.26%	gamma-Cadinene	1515.29	Sesquiterpene
65	31.80	0.03%	delta-Cadinene	1524.14	Sesquiterpene
66	33.54	0.11%	Caryophyllene oxide	1594.86	Sesquiterpene Ether
67	34.98	0.30%	T-Cadinol	1640.43	Sesquiterpenol